



11-Part
MAJOR
ARCANA
Sampler

The TAROT for Stitches

11-PART SERIES

• Border Chart •

Counted Cross Stitch Pattern

Stitching Instructions


Stitch Count: 288w x 344h

Fabric Design Size

14-ct 21" x 24"

16-ct 18" x 21"

Stitches used: Cross Stitch, Back Stitch

DMC	B/S-Color
3371	

X	DMC	Anchor	Length	Stitches
★	3822	295	1 Skein	403
ⓘ	3852	306	1 Skein	94
℞	352	9	1 Skein	415
N	350	11	1 Skein	1207
☐	3371	382	5 Skeins	9370

X = Full Cross Stitch (Use 2 strands)

B/S = Back Stitch (Use 1 strand)

Please make sure to cut your fabric at least 3" larger than the design on each side, use **27" x 30" for 14-ct or 24" x 27" for 16-ct.**

Model was stitched over 2 on **28-count Linen in "Tiny Modernist's Dark Stone"** by FabricFlair.

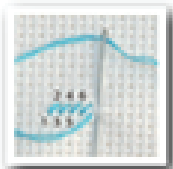


Fig. 1

Let's Begin

Find the center of your fabric, so will you know where to begin stitching. Do this by lightly folding the fabric in half, and half again. Mark with a pin or short marking thread. This point coincides with the center of the chart. Begin stitching in the center and work out.

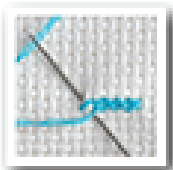


Fig. 2

Starting & Ending

Cut a length of embroidery thread approx. 18" long. Pull out the required number of threads one at a time - and thread your needle. Bring the needle up through the fabric, leaving a 1/2" tail and work over this with your first few stitches to secure. To finish, run your thread under several stitches at the back to secure it.

Cross Stitch

Bring the needle up at 1, down at 2, up at 3, down at 4, etc. across the row. (See Fig. 1) Work back across the row to complete the other half of each "X". Make sure your stitches all cross the same way. Work vertical stitches individually. (See Fig. 2)

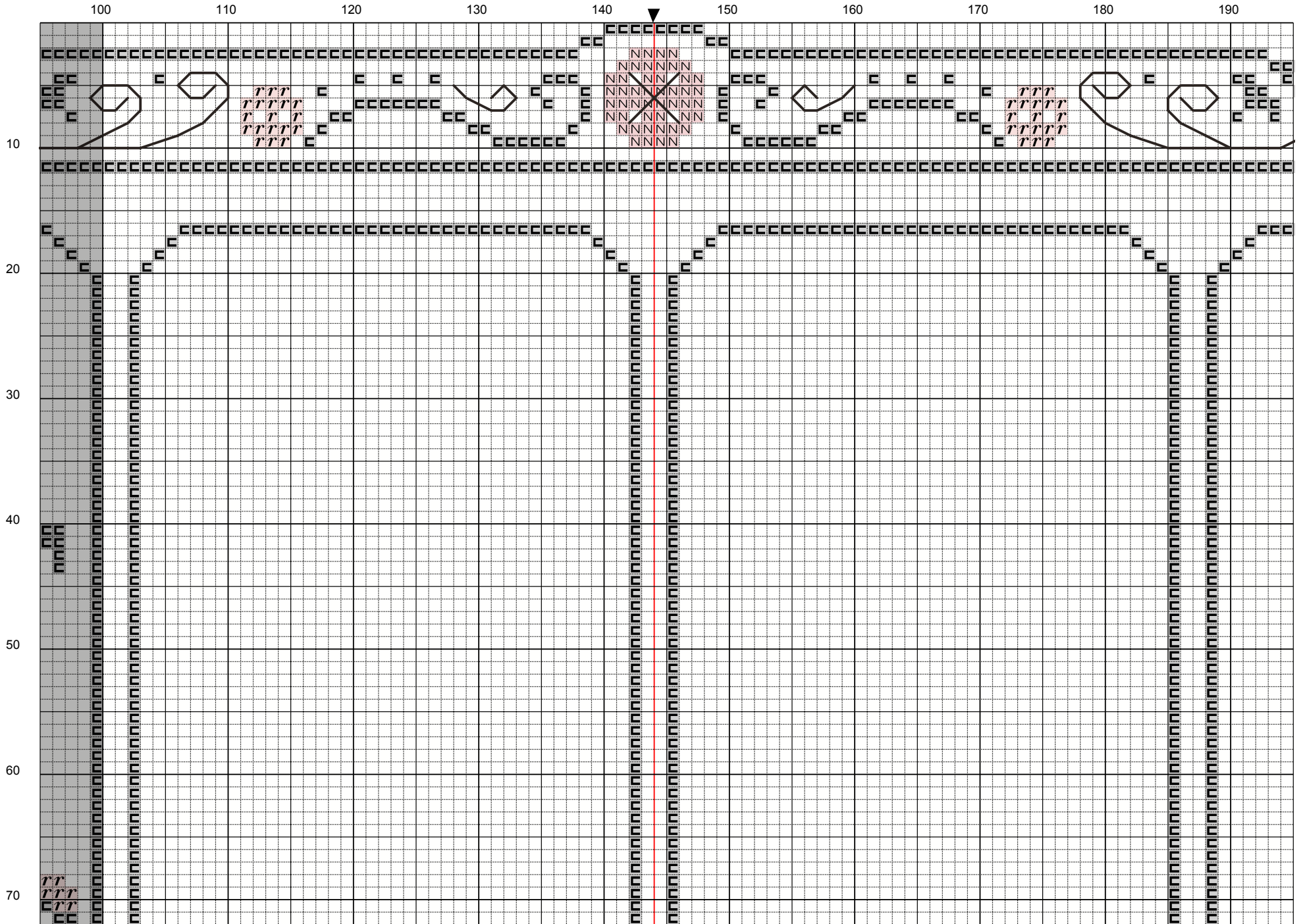


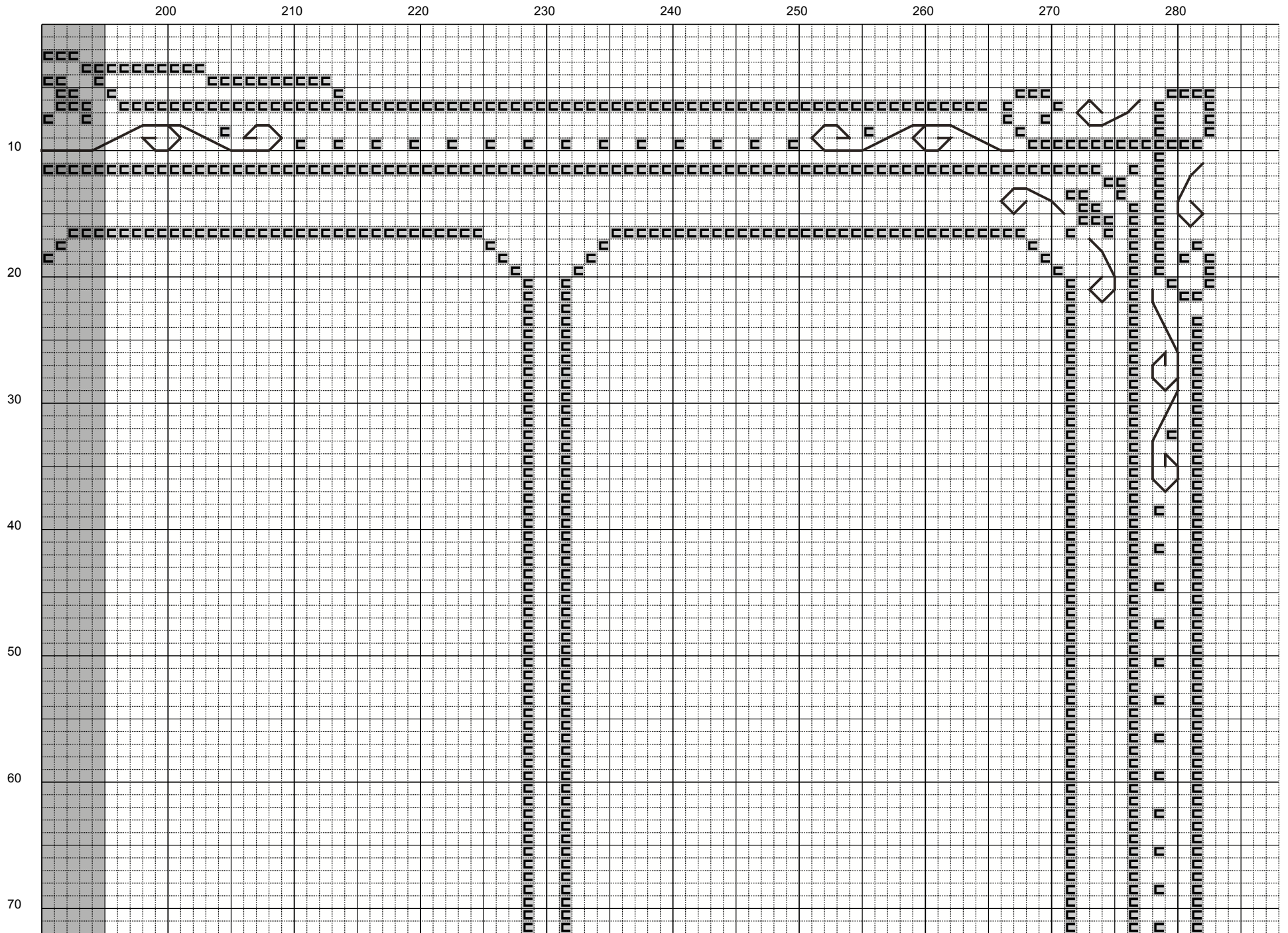
Fig. 3

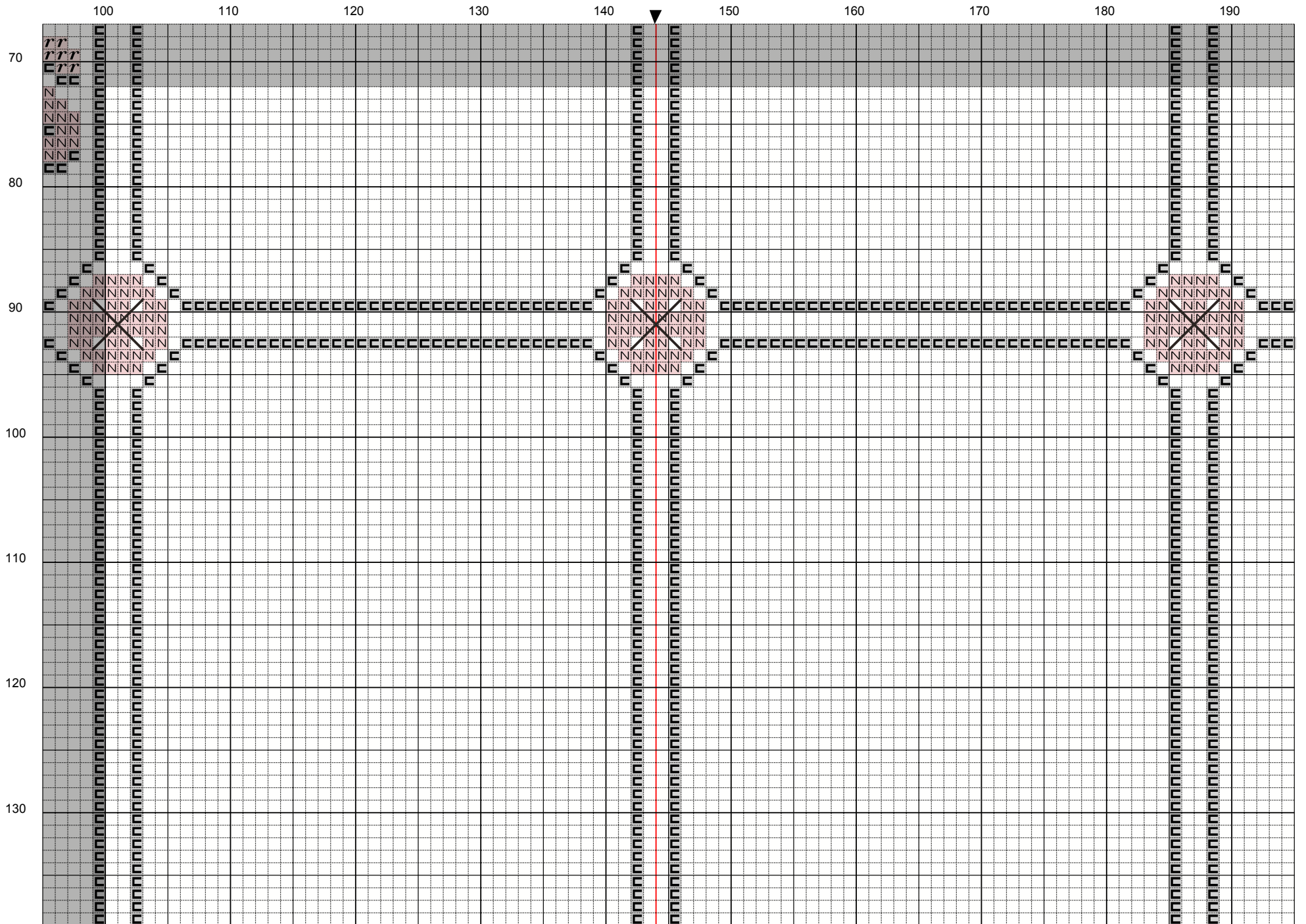
Back Stitch

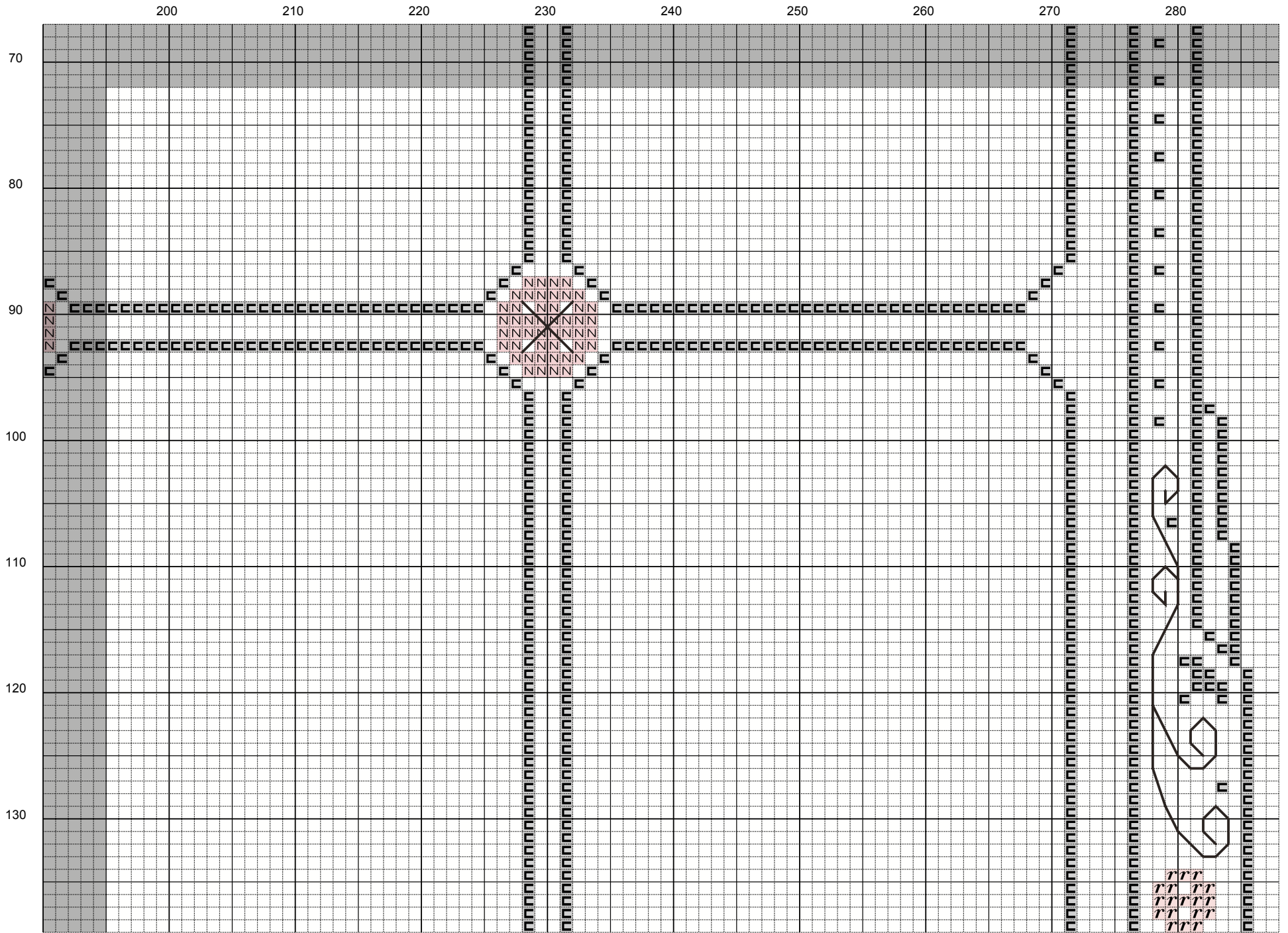
Bring the needle up at 1, down at 2, up at 3, down at 4, (same as 1). Continue, going back down in the same hole as the previous stitch. (See Fig. 3)

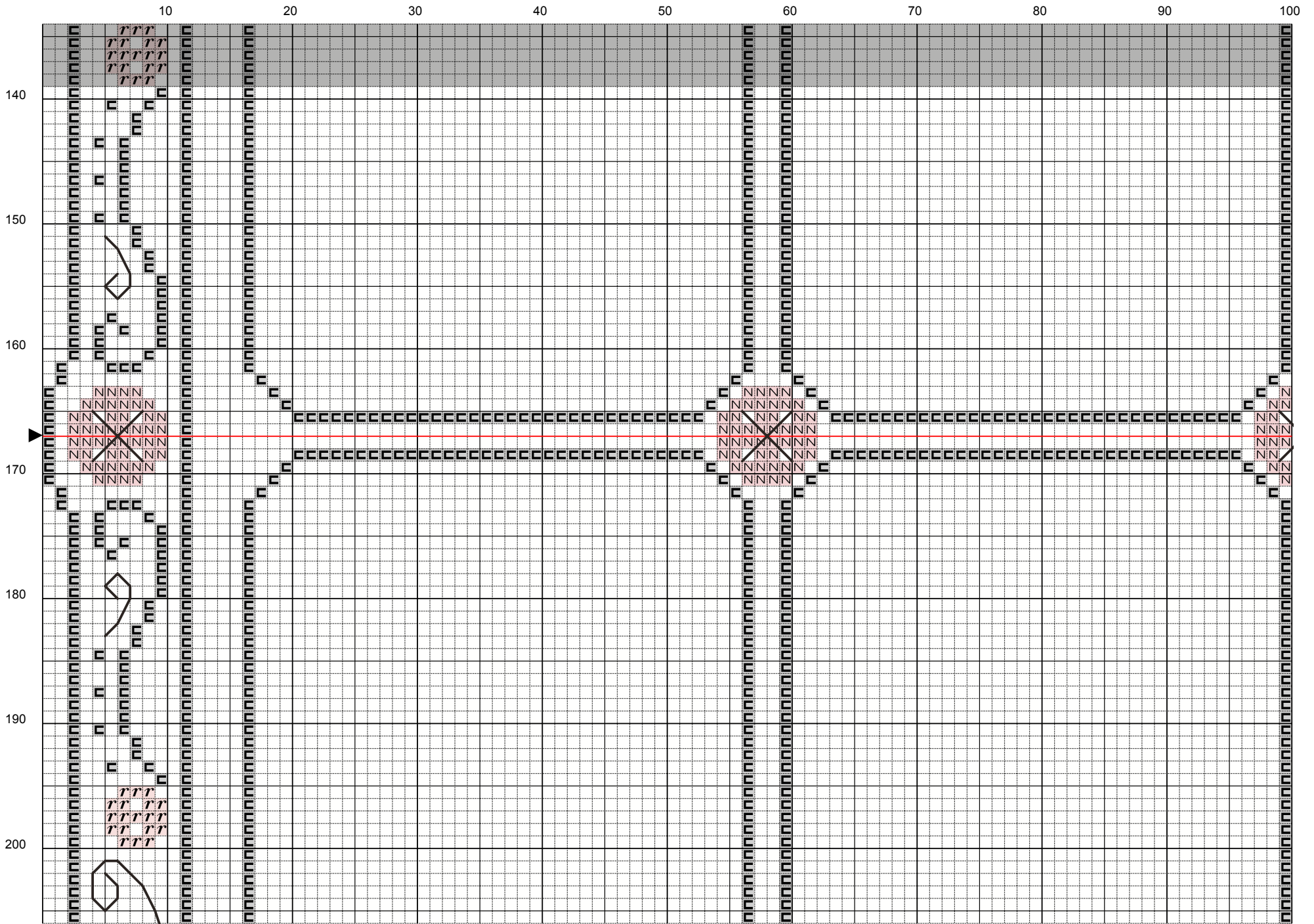


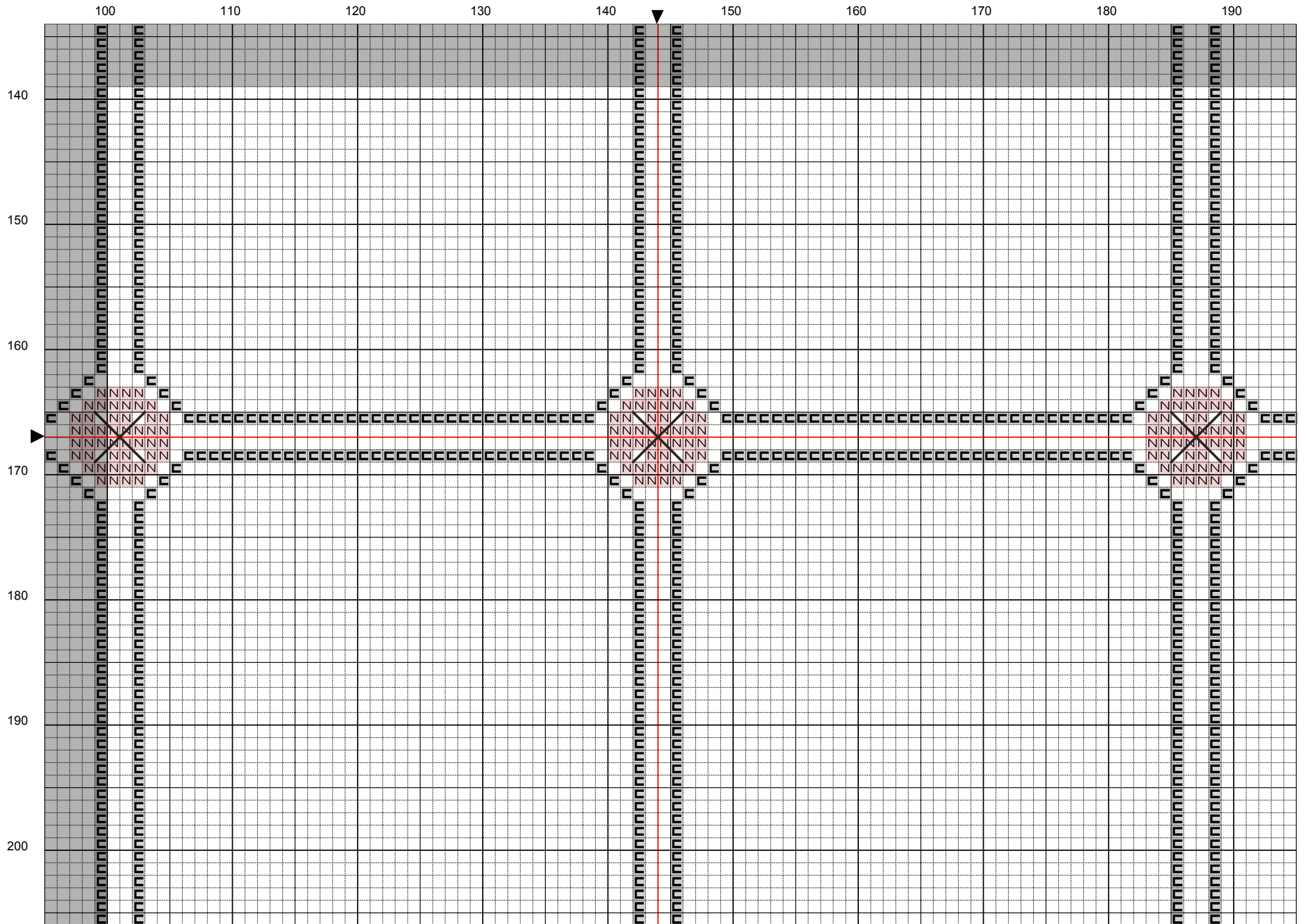












200

210

220

230

240

250

260

270

280

140

150

160

170

180

190

200

