

## Mattress Inspection and Repair Procedure

### Damaged surfaces cannot be properly cleaned, posing a risk of infection to patients

Many mattresses and stretcher pads have minor damage that can be repaired. When used properly, CleanPatch® improves patient safety and reduces the time and costs associated with mattress replacement.

#### Assess

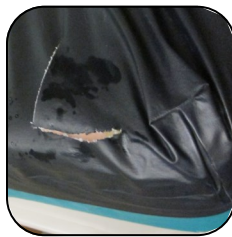
1. Clean the mattress as per hospital protocols and let dry completely
2. Inspect the cover for any rips, tears, punctures or abrasions
3. Look for any signs of warping or staining which could indicate fluid ingress
4. If there are no signs of fluid or contamination, proceed to repair



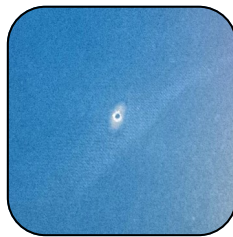
#### Repair



Abrasion



Cut or Tear



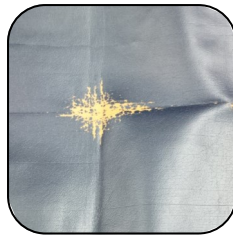
Puncture



Torn base < 10 cm



Previously Taped



Chemical Damage

- Use CleanPatch® only on mattresses that are otherwise suitable for patient use
- Ensure the surface is completely dry prior to applying CleanPatch®
- Use a suitable size of CleanPatch® to ensure 1 cm intact margin around damage
- Apply on flat areas or over edges (2 dimensions)
- There may be more than one area of damage noted. We recommend a maximum of 4 to 6 patches per mattress
- CleanPatch will adhere to the majority of surfaces made of polyurethane or vinyl, and some types of nylon

#### Replace



Signs of fluid



Delaminated > 5x10 cm



Extensive Cracking



Cracking / Delamination



Warped / Sagging



Torn Zipper Seam

- Do not use CleanPatch® on mattresses with signs of fluid ingress or contamination, such as staining or warping
- We do not recommend layering multiple patches to cover large areas
- CleanPatch® may not lie flat over 3-dimensional corners
- CleanPatch® may not adhere to some types of nylon, or coatings that contain Teflon
- To avoid damaging the precise edge, DO NOT CUT CleanPatch®