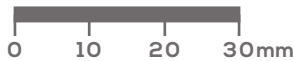


## La Kaiser Ring Sizing Guide

As an online jewelry brand we understand how you might feel intimidated when purchasing a new ring. We hope that selecting the correct ring size with the help of this guide will make the process a little less daunting!

The best way to get accurately sized would be to visit a local jewelry store, but if this is not available to you, we suggest using one of the methods below. When executed properly these methods can determine your correct ring size. Our Gem Collection (Vermeil) rings are only sold at whole sizes. If you size somewhere in between it would be up to you to order a size up or down based on how snug you want it. With our Fine Collection rings we sell whole sizes with the option of a \$25 resize fee for 1/2 and 1/4 sizes.

### Confirm Printed Paper Size



1. The measurements for our size guide are very precise. Please make sure to carefully follow instructions for accurate sizing.
2. Before printing, please check settings and make sure the page scale is set to "None" on your printer dialogue box. You may access the print dialogue box by pressing CTRL +P.
3. Please make sure the bar on the left is measuring at exactly 30 mm in length to ensure accuracy.

### Measure Current Ring

1. Find a ring that you currently own. All fingers vary in size so make sure that the ring you are measuring is for the finger you intend to wear the ring on.
2. Place your ring over the outlined circles below until you find a circle that matches the measurements of the inside diameter of your ring. Please make sure to match the inside edge of the ring to the outline of the circle.
3. If your ring isn't perfectly fitting around one of the circles below, we recommend ordering the larger size, as it is easier to size down than up. We are able to make our Fine Collection rings in quarter, half and whole sizes.





## International Ring Size Guide

CIRCUMFERENCE (MM)	DIAMETER (MM)	EUROPE	UK & AUSTRALIA	UNITED STATES & CANADA	CHINA	SINGAPORE & JAPAN	HONG KONG	SWITZERLAND
44.2	14.1	44	F 1/2	3	6	4	6	4
44.8	14.3	45	G			5		5 1/4
45.5	14.5		G 1/2	3 1/2	7		7.5	
46.1	14.7	46	H			6		6 1/2
46.8	14.9	47	H 1/2	4	8	7	9	
47.4	15.1		I		9			7 3/4
48.0	15.3	48	I 1/2	4 1/2		8	10	
48.7	15.5		J					9
49.3	15.7	49	J 1/2	5	10	9	11	
50.0	15.9	50	K					10
50.6	16.1		K 1/2	5 1/2	11	10	12	
51.2	16.3	51	L					11 3/4
51.9	16.5	52	L 1/2	6	12	11	13	12 3/4
52.5	16.7		M		13	12		
53.1	16.9	53	M 1/2	6 1/2		13	14.5	14
53.8	17.1		N		14			
54.4	17.3	54	N 1/2	7		14	16	15 1/4
55.1	17.5	55	O		15			
55.7	17.7		O 1/2	7 1/2		15	17	16 1/2
56.3	17.9	56	P		16			
57.0	18.1	57	P 1/2	8	17	16		17 3/4
57.2	18.2						18	
57.6	18.3		Q					
58.3	18.5	58	Q 1/2	8 1/2	18	17	19	
58.9	18.8	59	R					19
59.5	19.0		R 1/2	9	19	18	20.5	
60.2	19.2	60	S		20			20 1/4
60.8	19.4	61	S 1/2	9 1/2		19	22	
61.4	19.6		T		21			21 1/2
62.1	19.8	62	T 1/2	10		20	23	
62.7	20.0		U		22	21		
63.4	20.2	63	U 1/2	10 1/2		22	24	22 3/4
64.0	20.4	64	V		23			
64.6	20.6		V 1/2	11		23	25	
65.3	20.8	65	W		24			25
65.9	21.0	66	W 1/2	11 1/2	25	24	26	
66.6	21.2		X					
67.2	21.4	67	X 1/2	12	26	25	27.75	27 1/2
67.8	21.6		Y					
68.5	21.8	68	Z	12 1/2		26		28 3/4
69.1	22.0	69	Z 1/2					
69.7	22.2	70		13		27	30	
70.4	22.4		Z + 1					
71.0	22.6		Z + 2	13 1/2				

## Additional Tips

**Consider the width of the band.** Most of our bands are fairly delicate and typically have a width that measures to about 1.3mm, but we do have a few styles that are designed with a wider band that measure to 4mm and above. We recommend sizing up if you plan on purchasing a wider band, as this affects the thickness of the band leading to a somewhat tighter fit than our delicate bands.

**Climate and temperature.** Fingers can shrink or expand when cold or hot. For instance, fingers tend to be smaller in colder temperatures and swell when it gets a bit warmer. We recommend sizing your finger with temperature in mind, perhaps when you're at a normal body temperature. If you want to ensure accurate sizing, try sizing a few different times with a high and low body temperature and choose a size in between.

**Knuckle size.** We recommend a ring size that feels snug going over the knuckle. If your knuckle is much larger than your finger's base, take two separate measurements and choose a size in between. You want a ring to fit over your knuckle, but not be too loose or it will shift around.

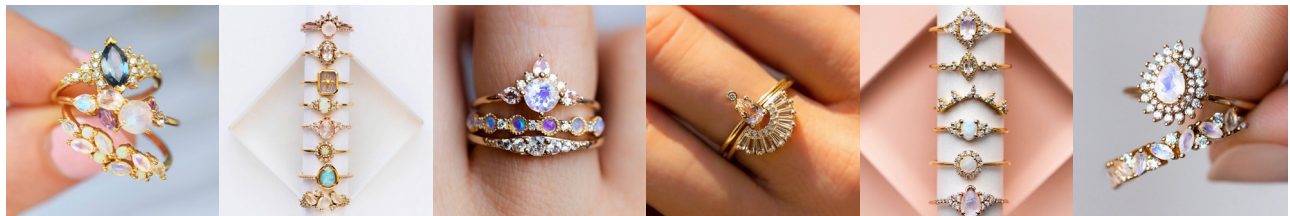
**Try measuring with a simple band.** Our bands vary in shape, design and width. We recommend measuring with a solid plain band to ensure accuracy.

**International conversion.** Please note that all of our rings are made in standard US sizing. If you are ordering from outside of the US, you may use our Ring Size Chart on page 2 to help you determine your US ring size. If you're ever in doubt we recommend visiting your local jewelry store as they may accurately size you and help you find your US ring size.

We hope this helps and that you love your new La Kaiser ring!

xx

La Kaiser



\*\*\*For Fine Jewelry, custom 1/2 and 1/4 sizes are available for a \$25 resizing fee. Please put your size request in the notes section during online checkout.\*\*\*

If you have any questions, please email [info@lakaiser.com](mailto:info@lakaiser.com).