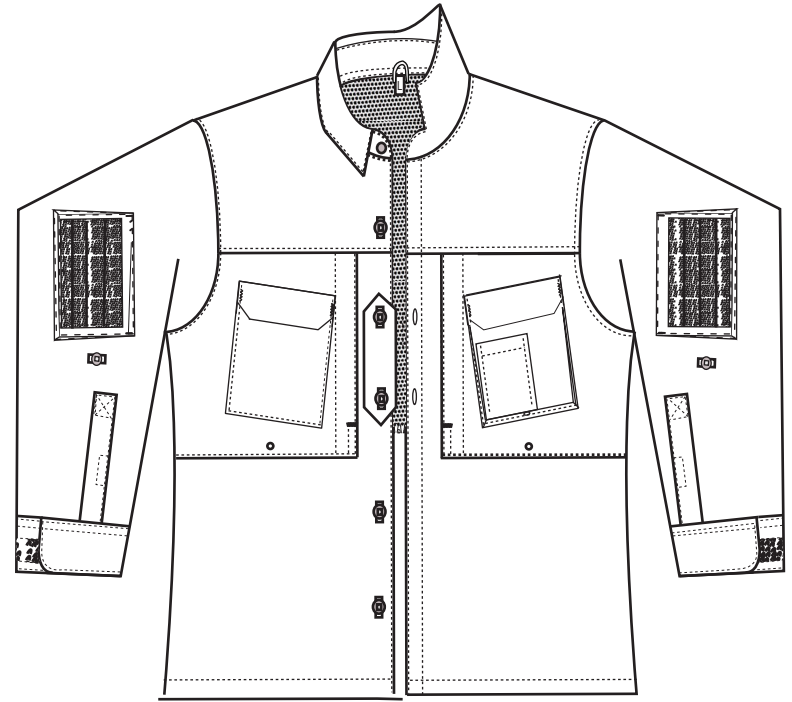


# Arktis A110 Size Guide

The second generation of the hot climate shirt has been hugely improved over its predecessor. We've completely redesigned the shape of the garment to give you a more traditional fit, which is far more comfortable. The fabric has also been changed to a brand new lightweight version of our signature ripstop. It remains robust, highly breathable and water-resistant.

It's always best to measure an existing garment to get an accurate size.

Note: Our garments are hand made by people not robots, please allow a 1.5cm tolerance to measurements.



Size

Chest Circumference

Pit to Pit

Centre Back Length

Centre Front Length

Sleeve Length (To Shoulder)

	<b>XS</b>	<b>S</b>	<b>M</b>	<b>L</b>	<b>XL</b>	<b>XXL</b>	<b>XXXL</b>
Chest Circumference	95cm	105cm	115cm	125cm	135cm	145cm	155cm
Pit to Pit	47.5cm	52.5cm	57.5cm	62.5cm	67.5cm	72.5cm	77.5cm
Centre Back Length	78cm	80cm	82cm	84cm	86cm	88cm	90cm
Centre Front Length	70.5cm	72.25cm	74cm	75.5cm	77cm	78.5cm	80cm
Sleeve Length <small>(To Shoulder)</small>	63.1cm	64.7cm	66.3cm	67.9cm	69.5cm	71.1cm	72.7cm