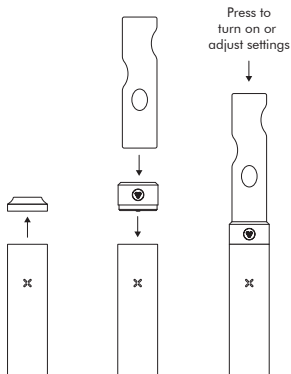


POTV GLASS ADAPTER FOR PAX

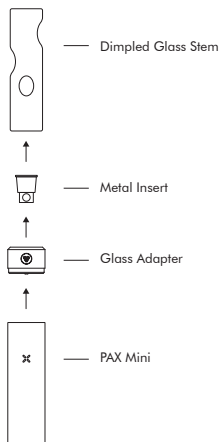
The Planet of the Vapes Glass Adapter for PAX is compatible with the PAX 2, PAX 3, PAX Plus and PAX Mini. It can be used with different glass pieces to customize your PAX vape experience.

1. Remove the original mouthpiece from your PAX.
2. Insert your glass piece all the way in from the top of the Glass Adapter.
3. Press the Glass Adapter into the PAX where the mouthpiece goes. Rock it from side to side as you press it into place.
4. Firmly press down on the glass stem or bubbler to turn your PAX on and adjust settings.
5. Enjoy vaping with glass!



CLEANING & MAINTENANCE

We recommend you regularly clean and maintain your Glass Adapter for the best performance. Remove the Glass Adapter from your PAX vaporizer and gently pull out your glass piece (Dimpled Glass shown below) and metal insert.



Soak the Glass Stem and Metal Insert in rubbing alcohol until the oils and residues dissolve (30 minutes or longer).

Clean the Glass Adapter with an alcohol wipe or warm, soapy water.

Rinse all parts thoroughly with clean water, and dry before reassembling.

GLASS PIECES

We designed five different glass pieces to use with your Glass Adapter so you can vape true to your style:

1. Dimpled Glass: Stealthy with super cool vapor.
2. Bent Tube: For a cool, relaxed draw.
3. Water Pipe Adapter: Vape with your favorite glass.
4. Mini Bubbler: For water-cooled vapor on-the-go.
5. Curved Mini Bubbler: Smoothest vapor with a relaxed style.



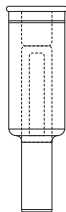
Dimpled Glass



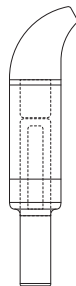
Bent Tube



Water Pipe
Adapter



Mini Bubbler



Curved
Mini Bubbler

For a full list of compatible Vapes, please go to www.planetofthevapes.com/products/POTV-glass-adapter-pax or scan the following QR code:

  @potvlife



for USA



for Canada

PLANET OF THE VAPES
GLASS ADAPTER FOR PAX

QUICK START GUIDE