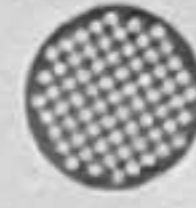
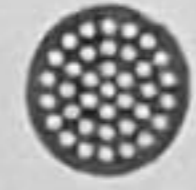




QUICK GUIDE



3 x SS Screen for Chamber



2 x SS Screen for mouthpiece

CAP

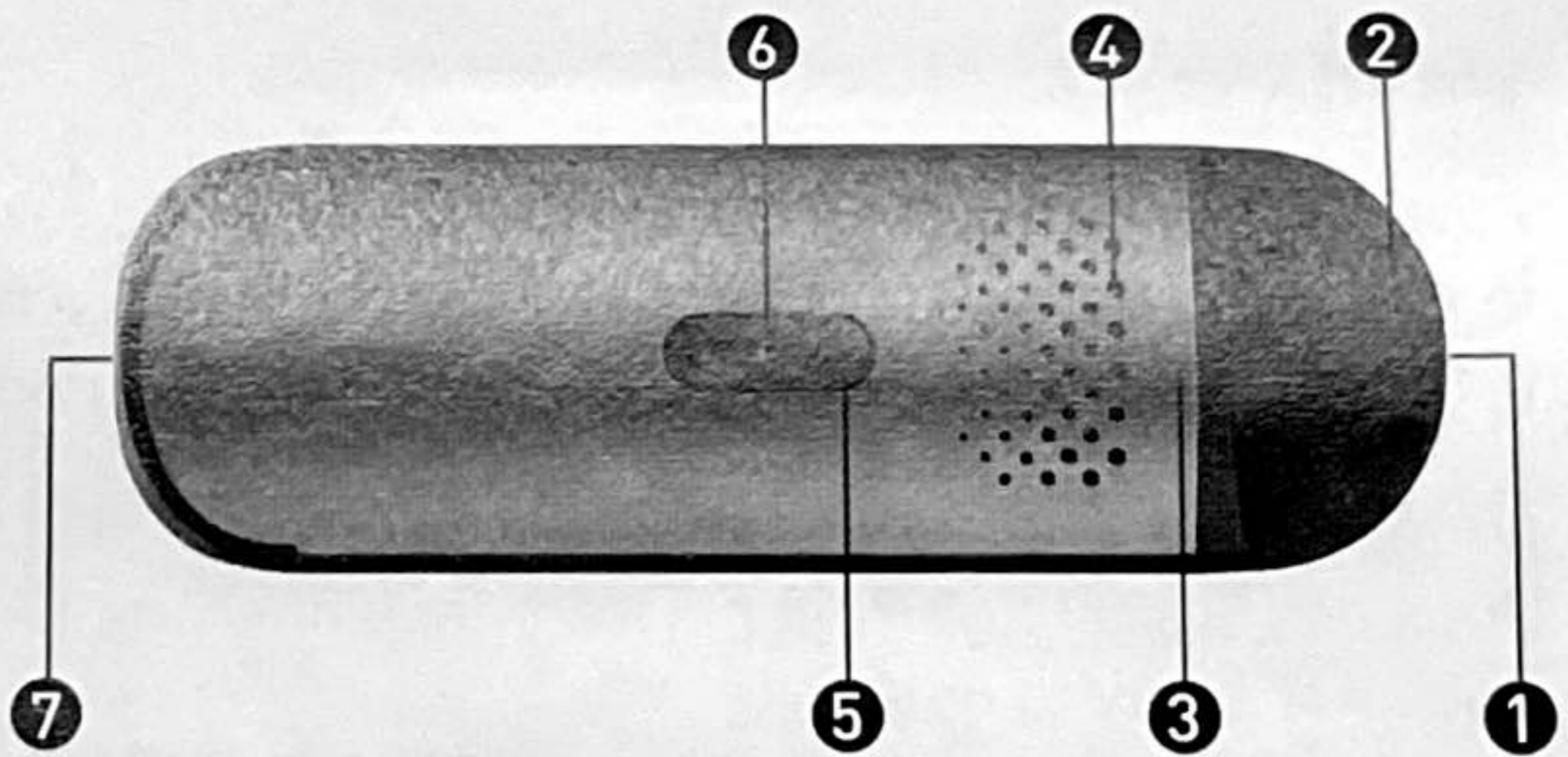
USB
Cable

Quick
Guide

Cleaning
Brush

Packing
Tool

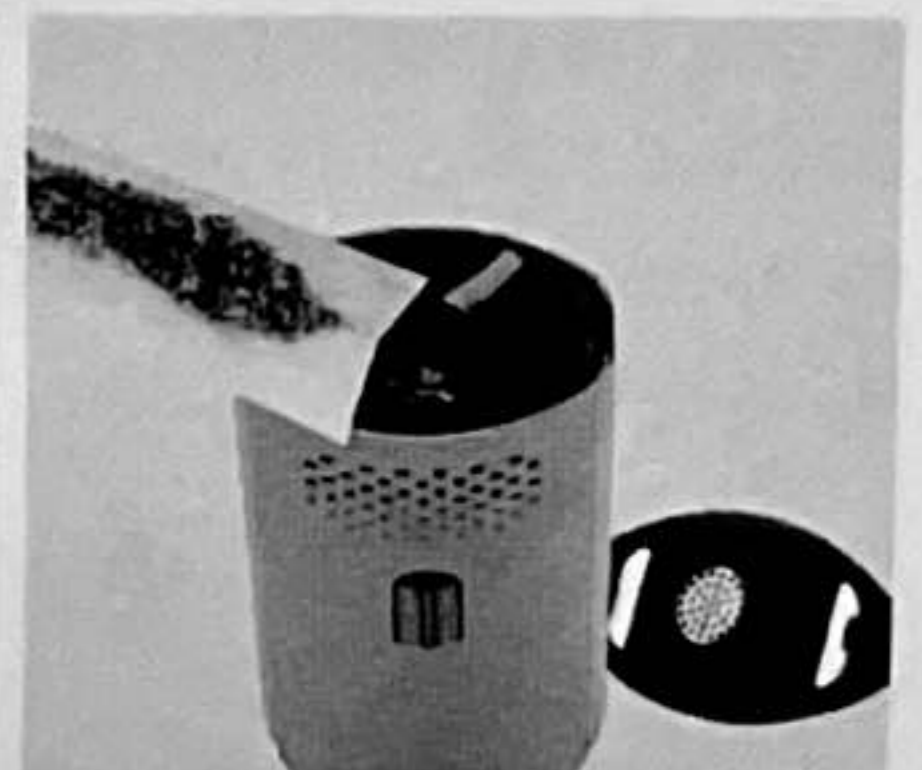
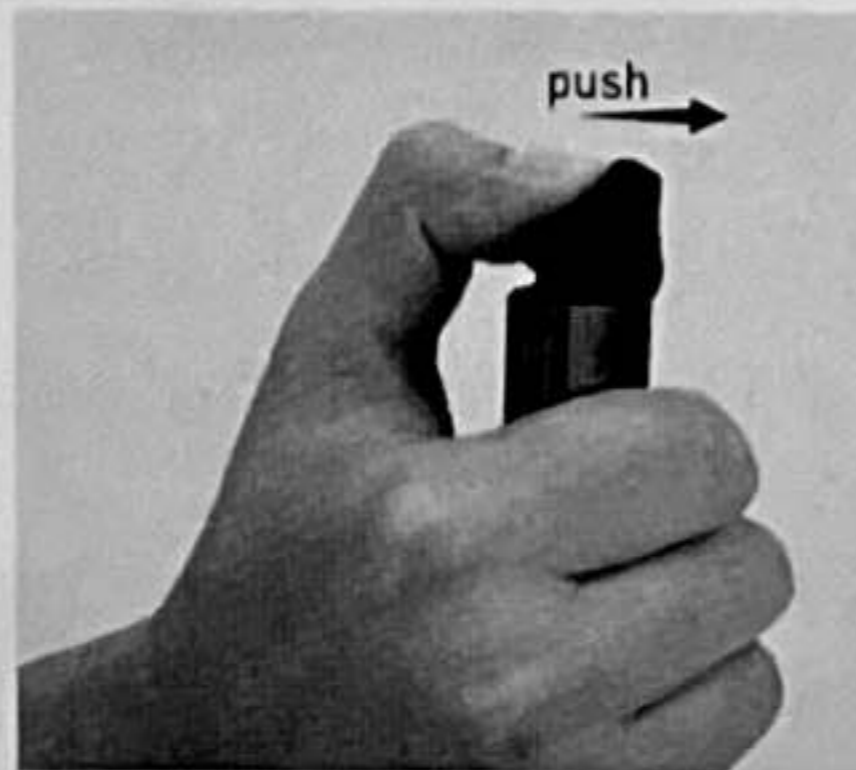
- ① Zirconia Mouthpiece Path
- ② Magnetic Mouthpiece
- ③ Herb Chamber
- ④ Air Vents
- ⑤ HOME Button
- ⑥ LED Light
- ⑦ Micro USB Port



STEPS FOR OPERATION

Step1

Open the mouth cap, load in herbs.



Step2

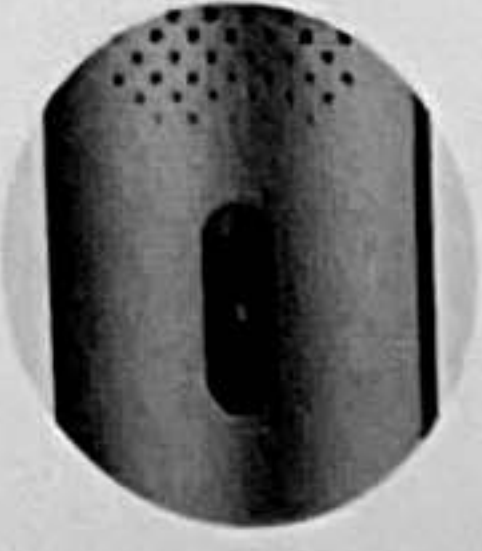
Press HOME button 5 times to turn on the CAP.

Step3

The device auto heats up in 20 seconds, vape when led stays solid.

Step4

Press HOME button 3 times to adjust temp in 3 levels.



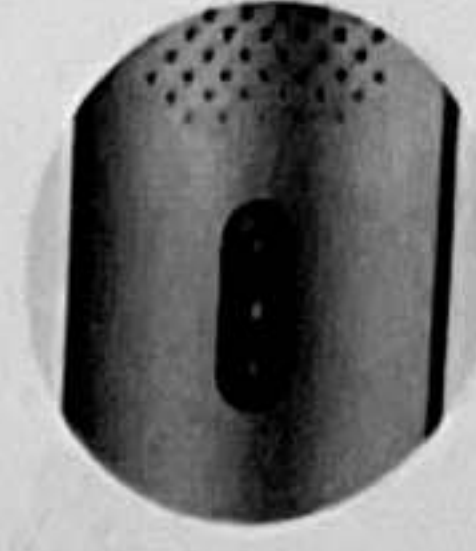
BLUE LED

Low temp
385°F/196°C



GREEN LED

Medium temp
400°F/205°C



RED LED

High temp
420°F/215°C

Step5

Press HOME button for 2 seconds to stop heating.

Step6

Press HOME button 5 times to turn it off.

WARRANTY

Flowermate Technology LLC. warrants this Flowermate device against defects in materials and workmanship under normal use for a period of two (2) years from the date of retail purchase by the original end-user purchaser.

Limited Warranty

Does not apply to normal performance degradation

Does not apply to battery

WARNINGS

- The heating unit contains delicate electrical parts. Handle with care to avoid damage. Do not immerse in liquid, pour anything into the unit, open the unit or expose it to extreme temperatures. These actions may result in injury and property damage from electrical shock or fire.
- Keep out of reach of children, minors and pets. Unit and parts pose a choking and burning risk.