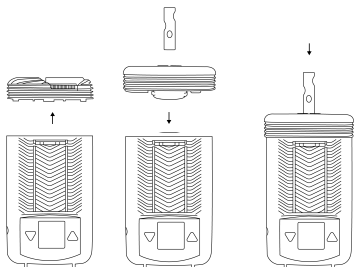


POTV GLASS ADAPTER FOR MIGHTY/MIGHTY+

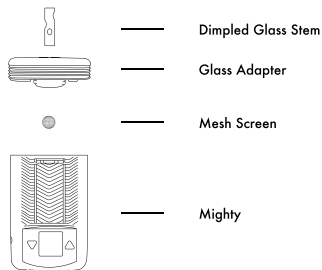
The Planet of the Vapes Glass Adapter for Mighty is compatible with the Mighty and Mighty+. It can be used with different glass pieces to customize your Mighty(+) vape experience.

1. Remove the original cooling unit from your Mighty.
2. Attach the Glass Adapter to the Mighty with a quarter turn as you would with the original cooling unit.
3. Insert your glass piece all the way in from the top of the Glass Adapter.
4. Power up your vape like normal.
5. Enjoy vaping with glass!



CLEANING & MAINTENANCE

We recommend you regularly clean and maintain your Glass Adapter for the best performance. Remove the Glass Adapter from your Mighty vaporizer and gently pull out your glass piece (Dimpled Glass shown below). Use the handle of the Storz & Bickel brush to push the mesh screen out from above.



Soak the Glass Stem and Mesh Screen in rubbing alcohol until the oils and residues dissolve (30 minutes or longer).

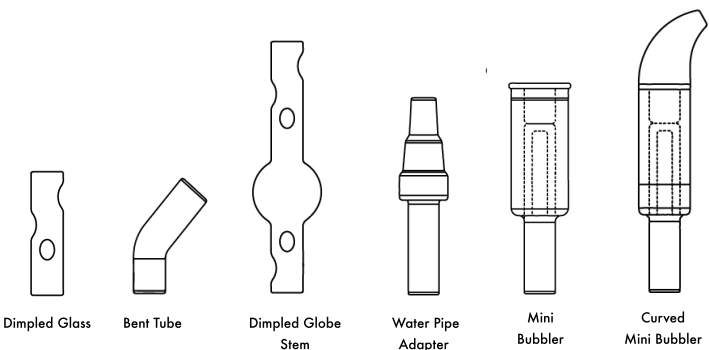
Use an alcohol wipe or cotton swab dipped in rubbing alcohol to clean the Glass Adapter. Wipe down the area where the screen sits from below, and the bottom of the mouthpiece hole from above.

Rinse all parts thoroughly with clean water, and dry before reassembling.



GLASS PIECES

We designed six different glass pieces to use with your Glass Adapter so you can vape true to your style:

1. Dimpled Glass: Stealthy with super cool vapor.
2. Bent Tube: For a cool, relaxed draw.
3. Dimpled Globe Stem: Coolest vapor from a dry stem.
4. Water Pipe Adapter: Vape with your favorite glass.
5. Mini Bubbler: For water-cooled vapor on-the-go.
6. Curved Mini Bubbler: Smoothest vapor with a relaxed style.



For a full list of compatible Vapes, please go to <https://www.planetofthevapes.com/products/POTV-glass-adapter-mighty> or scan the following QR code:

  @potvlife

PLANET OF THE VAPES
GLASS ADAPTER FOR MIGHTY/MIGHTY+

for USA

for CANADA

QUICK START GUIDE