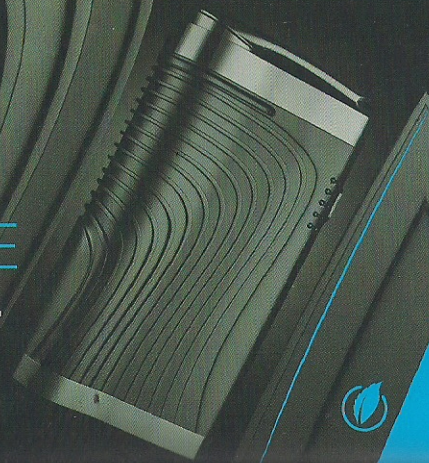




BOUNDLESS
VAPE TECHNOLOGY

CF VAPE
USER MANUAL





CF VAPORIZER

An ergonomically designed, portable vaporizer with a retractable mouthpiece and a rugged hand-grip combined with a patented Convection Air-flow System (CAS). CF Vape represents the next generation in vaporizer technology. Compact in size and boasts 1,300 MAH power to provide you with 5 different temperature levels (355°F, 370°F, 385°F, 400°F, 415°F) of various options for different herbal blends. Enjoy an exceptional vaping experience with our CF Vape!

(CAS) VAPORIZER TECHNOLOGY



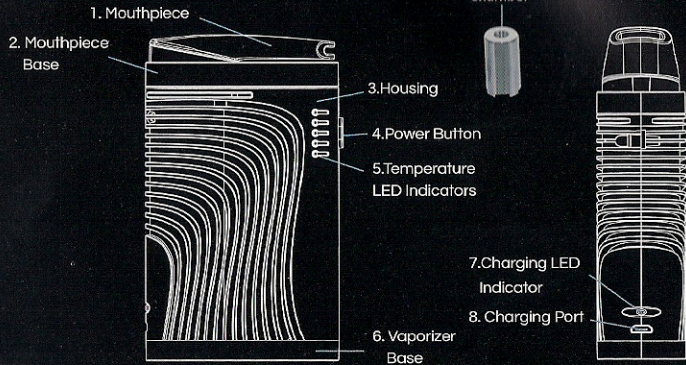
What's in the Box:

- 1 CF Dry Herb Vaporizer
- 1 Liquid/Waxy Chamber (Organic Cotton)
- 1 Packing Tool and Dabber
- 1 Cleaning Brush
- 1 USB Charger
- 1 User Manual

Key Features

- Next Generation Patented Convection-Airflow-System (CAS) Technology.
- Portable Vaporizer that is Ergonomically Designed and Easy to Hold and Operate.
- LED Indicators Stands for 5 Levels of Temperature setting: 355°F, 370°F, 385°F, 400°F, 415°F.
- Non Combustion Vaporizer.
- Fully Isolated Air Path allows for Clean and Pure Vaping.
- Compact, Rugged Design.
- Built with Medical and Food Grade Material.
- Micro 5-Pin Convenient Charging.

What's in a CF Vape?



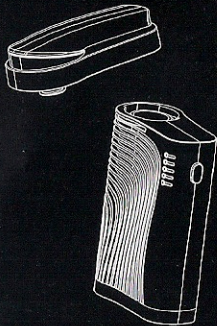
3

Product Configuration

1. Mouthpiece - Rotary 360°, Vape from any directions.
2. Mouthpiece Base - Made with different easily disassembled components.
3. Housing - Hot-Dissipation Design. Rugged and Ergonomically Designed.
4. Power Button - One Button to Control All.
5. Temperature LED Indicators - 5 Different Temperature Levels: 355°F , 370°F , 385°F , 400°F , 415°F.
6. Vaporizer Base - Air Inflow.
7. Charging LED Indicator - Charging is Red, Fully Charged is Green.
8. Charging Port - Micro 5-Pin Port, 5V 2A is best suggested.
9. Liquid/Waxy Chamber - Fill your choice of oil/wax (not at the same time).

4

How to Use CF with Dry Herbs?



LOAD

- Get the CF and remove mouthpiece from the device.
- Load choice blend loosely into the ceramic heating chamber. Tamp down with the dabber tool. Do not over fill. (note: do not turn on device while loading blend).
- Attach CF mouthpiece.

5

How to Use continued ACTIVATE

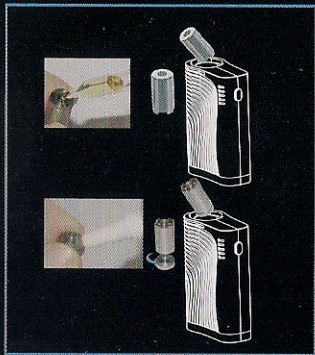
- Rapidly press Power button five times within 2 seconds to power on CF. The LED light will flash BLUE to indicate power on. The Default Setting is Level 1 for the first operation.
- The LED light will flash to indicate the CF is heating.
- Let CF sit as it heats to desired temperature setting. The LED light will stop flashing and become Solid BLUE, indicating that the device is ready to use. Press and hold the power button for 2 seconds to advance to the next temperature level (see temperature levels guide below), 5 temperature levels.
- To Power Off CF, rapidly press power button 5 times within 2 seconds.

Temperature Levels Indicators:

- Level 1: 355°F (179°C)
- Level 2: 370°F (188°C)
- Level 3: 385°F (196°C)
- Level 4: 400°F (204C)
- Level 5: 415°F (213°C)

6

How to Use CF with oil/wax LOAD



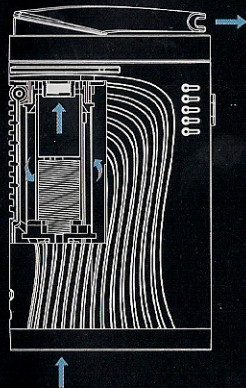
Oil

- Fill oil/waxy chamber with at least 5 drops of (0.2 - 0.3ml) oil. Let oil settle for a few seconds.
- Insert oil/waxy chamber into ceramic heating chamber
(note: do not turn on device while loading oil/waxy chamber).

Wax

- Place concentrated oil around the recess of the lid. Screw lid on to oil/waxy chamber.
- Insert oil/waxy chamber with lid facing down towards ceramic heating chamber (note: do not turn on device while loading oil/waxy chamber).

7



Fully Isolated Air Path for Clean Vaping

Air is fully directed to the heating chamber, isolating its path from the electronics. Ensuring a clean and pure vaping experience each time.

8

Technical Specifications

CF Vape

- Dimension: 4.07"H x 1.24"D x 2.42"W (103.5mmH x 31.5mmD x 61.5mmW)
- Temperature Levels: 5 Levels (355°F, 370°F, 385°F, 400°F, 415°F)
- Capacity: 1,300 mAh
- Output Voltage: 5.8V - 8.4V, Nominal Voltage: 7.4V
- Power On/Off: Press power button 5 times consecutively
- Safety Power Duration: 5 minutes
- Safeguard: Dual PCB/IC Protection

Cleaning and Maintenance

The mouthpiece of the CF may become clogged when used for an extended amount of time; resulting in difficult draw resistance or less vapor being released. Use the following guidelines to clean and maintain your device:

- Ceramic Heating Chamber: Use the brush tool to gently clean the walls of the heating chamber.
- Ceramic Filter: Use a fine paperclip or pin and gently insert between the holes. Push through thoroughly to clear the airway then wipe clean with a lint free cloth.
- Mouthpiece: Carefully rotate and remove the mouthpiece base from device, dis-assemble the mouthpiece base as indicated in next pages, wash gently with warm water, rinse and air dry. For stubborn stains, rub gently with a damp cotton swab.

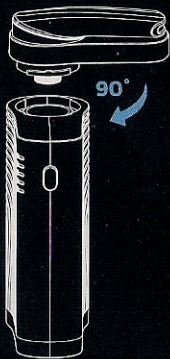
Tips

For best results, do not over-pack the ceramic heating chamber with your product. Over-packing will cause constricted air flow and uneven vaping.

After filling, use the packing tool to gently stir and aerate the product to ensure vapor is released.

Always properly prepare the device before use to reduce blockage of the mouthpiece.

How to Remove and Load Mouthpiece Components



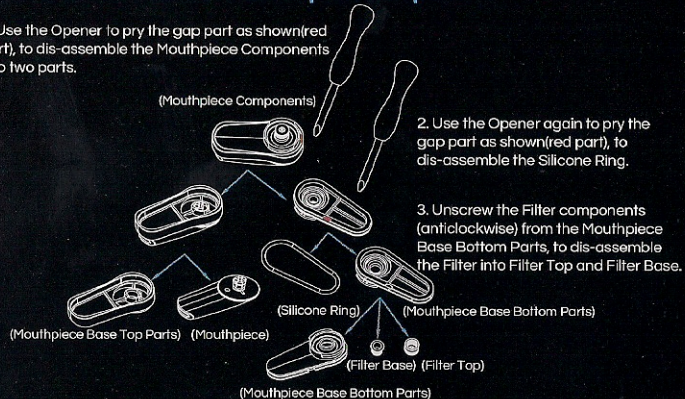
How to Load the Mouthpiece Components:

1. Place the Mouthpiece Components and the Device in 90° Angle.
2. Press the Mouthpiece Components into the device downward as showed.
3. Then rotate the Mouthpiece Component clockwise.

How to remove the Mouthpiece Components:
The above steps in reverse.

How to Dis-Assemble the Mouthpiece Components

1. Use the Opener to pry the gap part as shown (red part), to dis-assemble the Mouthpiece Components into two parts.





2. Use the Opener again to pry the gap part as shown (red part), to dis-assemble the Silicone Ring.

3. Unscrew the Filter components (anticlockwise) from the Mouthpiece Base Bottom Parts, to dis-assemble the Filter into Filter Top and Filter Base.

Battery and Charging

CHARGING

- Initially charge the CF for 2.5 to 3 hours. The battery will stop charging when the side LED is green. When the battery level is low, charge battery with included Micro 5-Pin USB Charger. Low battery level will be indicated with all 5 LEDs flashing 6 times repeatedly.
- Charging the CF while powered on, the side LED stay red,  when it is fully charged, it turns to green. 
- Do not use CF while charging. This will cause damage to the device.
- To prevent the device from overheating, do not leave the charger plugged in overnight.
- Do not leave charger plugged in or unattended without the device. Do not charge unit on bare carpet or rug.

BATTERY

The device contains a Lithium-Ion battery. Take caution and dispose in the correct receptacle. Do not discard in trash. Do not over charge. Do not short circuit the battery at over 200°F.

Notice: Lithium Batteries are subject to degradation and reduced run time over the course of regular use while Boundless took great care in selecting premium quality long life Lithium batteries due to their non-memory features and ability to cycle 300 times preceding degradation, battery life will gradually diminish with extended use.

Safety

WARNING

Failure to follow these safety instructions could result in personal injury or damage. Users of this device do so at their own risk. Neither Boundless Technology, LLC nor its retailers assume any responsibility or liability associated with the use/misuse of the device. Boundless Technology branded products are intended for adult use and consumption only. Keep this booklet in a safe place for future reference.

DISCLAIMER

This device is designed as a mobile solution for the practitioners of aromatherapy and should be used for dry herbal blends as indicated. This device is not intended for use with illegal substances.

CHOKING HAZARD

The CF contains small parts which may be a choking hazard to small children. Keep device away from children.

Safety continued

HANDLING

- Do not drop, deform, bend, crush, puncture, incinerate, microwave, shred, paint or insert foreign objects into a Boundless Technology, LLC CF Vape.
- Do not clean CF other than instructed by Boundless Technology, LLC.
- Do not attempt to repair or modify the CF Vape yourself.
- Do not use a damaged CF Vape charger or non Boundless Technology charger. Incompatible chargers may carry different voltage, which may be a fire hazard. Only use the charger provided. Failure to do so will void the limited warranty offered on Boundless Technology products.
- Use caution when handling CF, the heating chamber area is hot when the device is powered on. Refrain from direct contact with the main heating chamber when hot. Do not leave the device unattended when it is powered on or while the device is still hot.

Safety Features

SLEEP PROTECTION

The device is equipped with a safety sleep mode. When the device is powered on and after 5 minutes vaping, it will go into sleep mode to avoid over-use. Press and Hold the power button for 3 seconds to resume vaping.

SMART TEMPERATURE LEVELS

The CF is equipped with 5 temperature levels (355°F, 370°F, 385°F, 400°F, 415°F) Also, within a smart function to shift between 5 temperature level settings by pressing and holding the power button for 2 seconds.

Warranty

1 YEAR LIMITED WARRANTY

Boundless Technology, LLC warrants this CF branded device against defects in materials and workmanship under normal use for a period of one (1) year from the date of retail purchase by the original end-user. The original bill of sale is required to redeem warranty. The limited warranty covers one (1) year for electronics, ceramic heating chamber, structural integrity and attachments. The Lithium-Ion battery ninety (90) days. If a physical defect arises and a claim is made within the Warranty Period, at its option and to the extent permitted by law, Boundless Technology will either:

- repair the product defect
- exchange the product with a product that is new or functionally equivalent to device
- refund the purchase price of the device

Warranty continued

EXCLUSIONS & LIMITATIONS

The Limited Warranty applies only to products manufactured by Boundless Technology, LLC, which can be identified by the "Boundless Technology, LLC" trademark, tradename or logo affixed to the device. The Limited Warranty does not apply to any non-Boundless Technology, LLC products. This warranty does not apply to (i) damage caused by accident, abuse, misuse, flood, fire, earthquake, acts of piracy or other external causes; (ii) damage caused by operating the product outside the permitted or intended use as described by Boundless Technology, LLC; (iii) a device or part that has been modified to alter the functionality or capability without the written permission of Boundless Technology; (iv) cosmetic damage, including but not limited to dents, scratches and/or broken plastic.

This warranty applies to the original end-user and is non-transferrable. Boundless Technology, LLC warranties only apply to devices that are purchased from authorized retailers serviced by an authorized Boundless Technology, LLC distributor.

For questions regarding authorized retailers, additional warranty details, please visit:
www.BNDLSVapes.com

