

# KABA Access Control

## *E5031 - Series Lever*

### *Features*

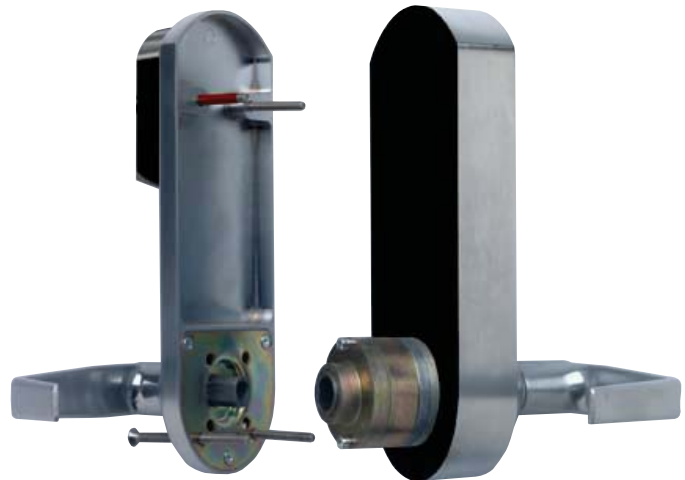
- Accommodates both indoor & outdoor application
- Retrofits to any standard 161 prep
- 3 year warranty from lock activation date
- ADA compliant lever Grade 1
- 100 access codes, programmable passage mode
- Extensive audit trail
- Non handed

### **Stocked Product**

PART No.	DESCRIPTION	FINISH
E5031XS	Lever with Schlage C Keyway override	26D
E5031B	Lever with Best Prep Override Less Core	26D
E5031S	Lever with Schlage RC Prep Less Core	26D



- Installation requires no wires through the door



- Fully contained electronics module in exterior housing