

# Glynn Johnson

## 410 Series Medium Concealed Overhead Door Holders/Stops

410 series holders and stops are designed for medium to light duty applications, They are ideal for openings that are subject to normal activity, providing protection for the door, frame and hinges

All models incorporate the popular channel/slide-arm design and offset jamb brackets.

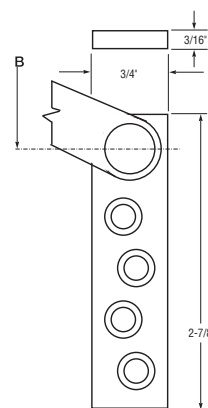
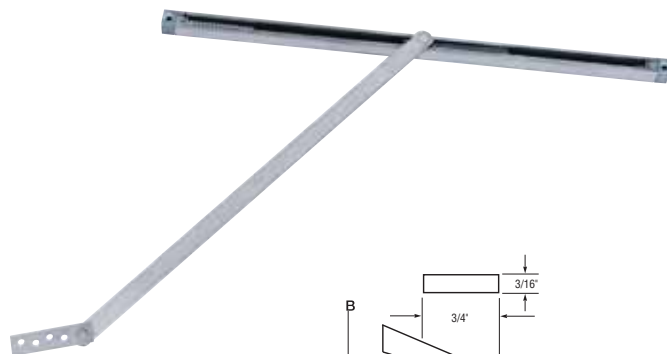
Non handed

When Hold-Open function is not a requirement, may be used on fire doors.

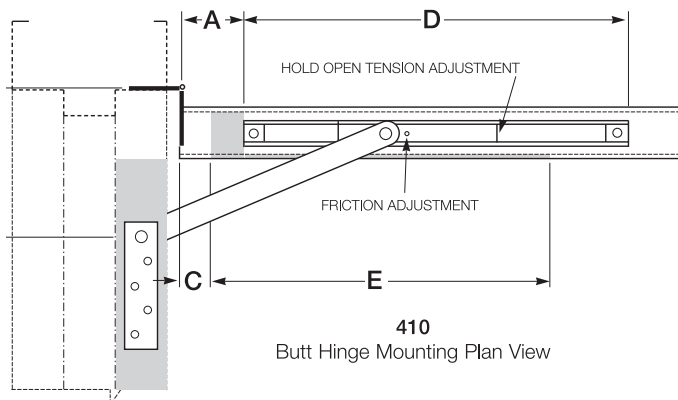
### Stocked Product

Item #	Size	Finish
412S	2	32D
413S	3	32D
414S	4	32D

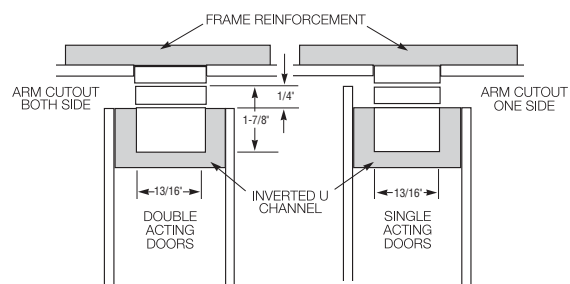
Optional Functions: Hold Open (H), Friction (F)  
Special Order: Sizes 1,5,6



STANDARD JAMB BRACKET



410  
Butt Hinge Mounting Plan View



CROSS SECTION IN CLOSED POSITION

410 Series Sizing Chart

SIZE	BUTTS/OFFSET PIVOTS				CENTER HUNG			
	DOOR OPENING	STOP ONLY	HOLD OPEN	FRICTION	DOOR OPENING	STOP ONLY	HOLD OPEN	FRICTION
1	18"-23"	411S	411H	411F	----	----	----	----
2	23-1/16"-27"	412S	412H	412F	----	----	----	----
3	27-1/16"-33"	413S	413H	413F	33-1/16"-39"	413S	413H	413F
4	33-1/16"-39"	414S	414H	414F	39-1/16"-45"	414S	414H	414F
5	39-1/16"-45"	415S	415H	415F	45-1/16"-51"	415S	415H	415F

BHMA/ANSI, A156.8 & FED. Spec. Cross Reference		
G-J Model	BHMA*	FED. Spec.
411-415 H	C04511	1166
411-415 S	C04541	1166A
411-415 F	C04531	1164

\* First numeral (0) designates optional material.  
To specify:  
Brass material, change 0 to 1 (i.e. C14511)  
Stainless Steel Material, change 0 to 5 (i.e. C54511)  
Steel material, change 0 to 8 (i.e. C84511)

Note: This chart illustrates the most common types of hinging and door opening sizes.  
For unusual door details, contact Glynn-Johnson for availability.

The template information on this page is for reference only and is not intended to serve as an installation template.  
For complete dimensional information, refer to Glynn-Johnson template book.