

# Glynn Johnson

## 90 Series Surface Heavy Duty Overhead Door Holders/Stops

90 series door holders and stops provide long lasting protection for doors, frames and hardware. All models incorporate a heavy-duty channel/slide-arm design and offset jamb bracket. This design allows for simple field modification.

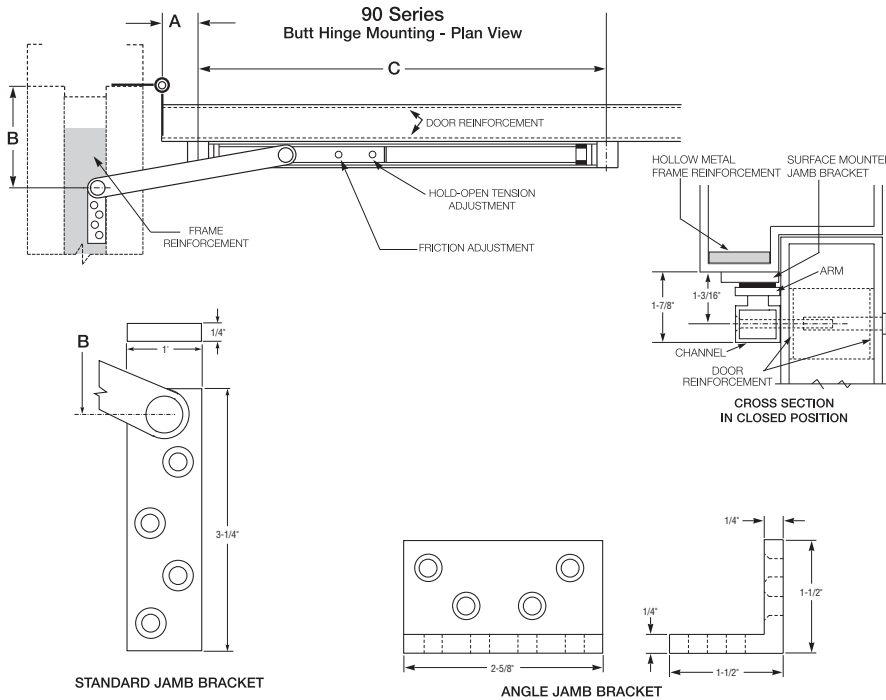
When the Hold-Open function is not a requirement, the Stop only model provides a reliable method of door control. The Stop only models may be used on fire doors.



### Stocked Product

Item #	Size	Finish
904S	4	32D
905S	5	32D

Optional Functions: Hold Open (H), Friction (F)  
Special Order: Sizes 2,3,6



90 Series Sizing Chart								
BUTTS/OFFSET PIVOTS					CENTER HUNG			
SIZE	DOOR OPENING	STOP ONLY	HOLD OPEN	FRICTION	DOOR OPENING	STOP ONLY	HOLD OPEN	FRICTION
1	----	----	----	----	----	----	----	----
2	23-1/16"-27"	902S	902H	902F	27-1/16"-33"	902S	902H	902F
3	27-1/16"-33"	903S	903H	903F	33-1/16"-39"	903S	903H	903F
4	33-1/16"-39"	904S	904H	904F	39-1/16"-45"	904S	904H	904F
5	39-1/16"-45"	905S	905H	905F	45-1/16"-51"	905S	905H	905F
6	45-1/16"-51"	906S	906H	906F	51-1/16"-59"	906S	906H	906F

Note: This chart illustrates the most common types of hinging and door opening sizes.  
For unusual door details, contact Glynn-Johnson for availability.

BHMA/ANSI, A156.8 & FED. Spec. Cross Reference		
G-J Model	BHMA*	FED. Spec.
902 - 906H	C02511	1161
902 - 906S	C02541	1161A
902 - 906F	C02531	—

\* First numeral (0) designates optional material.

To specify:

Brass material, change 0 to 1 (i.e. C12511)

Stainless Steel material, change 0 to 5 (i.e. C52511)

Steel material, change 0 to 8 (i.e. C82511)