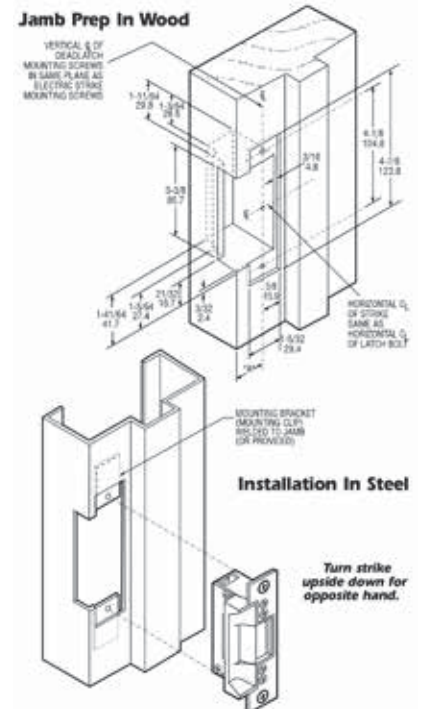
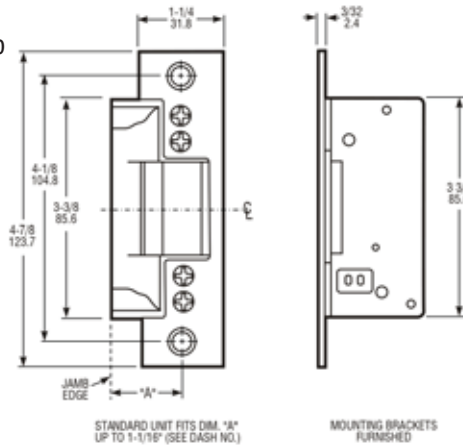


Adams Rite - *Electric Strikes*

7140 Series

Product Description & Features

- For use with key-in lever latches
- **Lip Extension:** 1.06" from door line to jamb edge
- Faceplate measure 1-1/4" x 4-7/8"
- ANSI/BHMA E09321 Grade 1
- **Strike Opening:** 5/8" x 1-7/16" x 1/2" deep bolt retainer jaw is made of stainless steel.
- **Case:** Approximately 1" x 3-3/8" x 1-5/8" deep
- Fail secure operation
- **Voltage:** 24 VAC / 24 DC continuous, 24 VAC / 24VDC intermittent



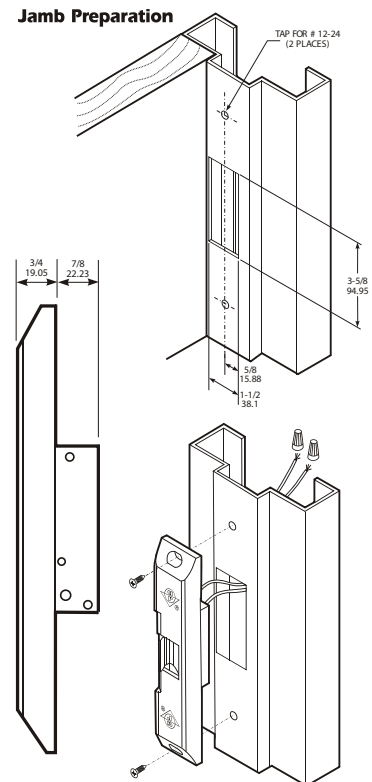
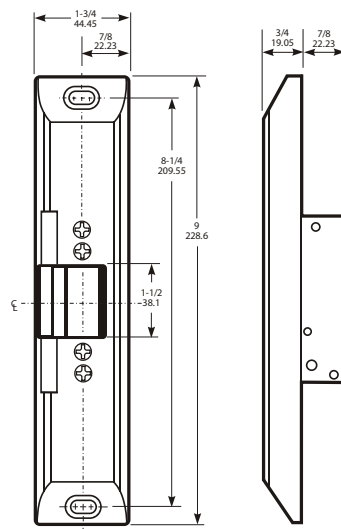
Stocked Product:

Finishes: Aluminum, Dark Bronze

74R1 Series

Product Description & Features

- For use with Von Duprin, Monarch, Precision and Pullman latches
- **Lip Extension:** 1.06" from door line to jamb edge
- Faceplate measure 1-3/4" x 9-3/4"
- ANSI/BHMA E09321 Grade 1
- **Strike Opening:** 5/8" x 1-7/16" x 9/16" deep bolt retainer jaw is made of stainless steel.
- **Case:** Approximately 1" x 3-3/8" x 1-5/8" deep
- Fail secure operation
- **Voltage:** 24 VAC / 12 VDC intermittent, 24 VAC / 24 DC continuous



Stocked Product:

Finishes: Aluminum, Dark Bronze