



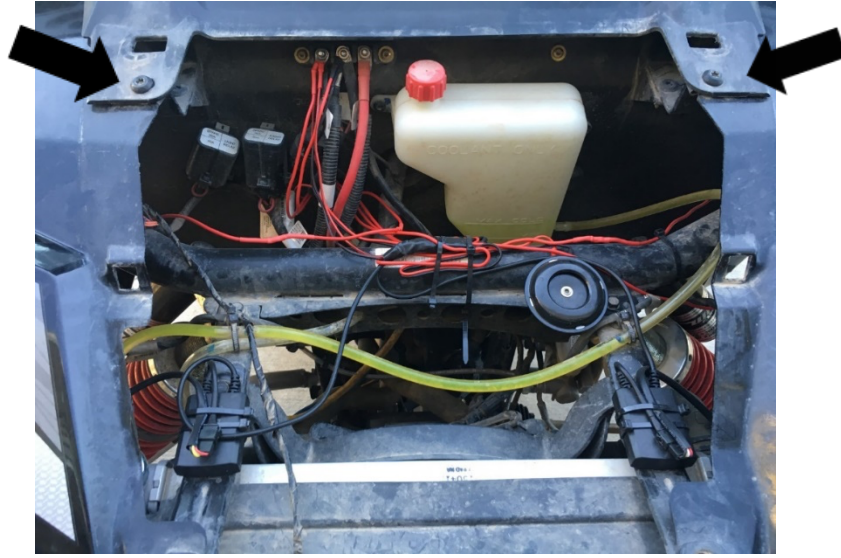
Integrated Street Legal Kit RZR or General (Sequential LEDs or 6-LED)

Parts Contents		
<p>Long cable with set of 3 wires</p> 	<p>Main Control Module</p> 	<p>Snail Horn and wiring harness and switch</p> 
<p>Zip Ties for cable management</p> 	<p>Column-Mounted Turn Signal Switch</p> <p>RZR:</p>  <p>General:</p> 	<p>Either the 6-LEDs or the Sequential LEDs</p> 
<p>Blue dash indicators w/ harness & Wiring for indicator light integration</p> 	<p>License Plate Kit and wiring harness</p> 	<p>In-line adapter plug for Rear Taillights (will have 1 version below)</p> <p>RZR 8-pin:</p>  <p>RZR 4-pin:</p>  <p>General 4 pin:</p> 

Step 1.
Remove Hood and Dash

Remove the Hood and Dash off your RZR or General.

(The dash comes off after the Hood using two T-40 Torx screws on the RZR, or all along the ridge on the Ranger and General.)

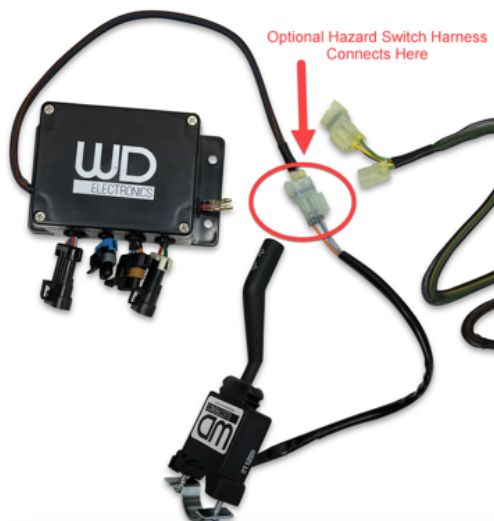


Step 2.
Attach the column-mounted turn signal lever

First, attach the column-mounted turn signal lever/ blinker switch to the steering column then run wires up under the dash into the compartment behind the dash by running them through the large grommet.

NOTE: Do not over-tighten the screws. You are threading into a very durable plastic on our column-mounted switch, but it is plastic nonetheless and can be stripped. There will be about a 3/4 of an inch gap between the metal bracket and the plastic. This is normal and holds as intended.

- a. **General.** Remove the nut off the bolt that attaches the steering column to the piston that raises and lowers the steering wheel. The bracket on the turn signal switch will wrap around the column and utilize that same bolt.



If you bought the optional Hazard, you will plug this in line with the turn signal switch wiring harness. Unplug the white connection and insert Hazard white plugs.

Step 3.
WD Main Control Box

Attach the WD Main Control Box module in a secure spot with zip ties under the dash. We suggest putting it right behind the steering wheel, behind the dash for all the wiring harnesses to reach properly.

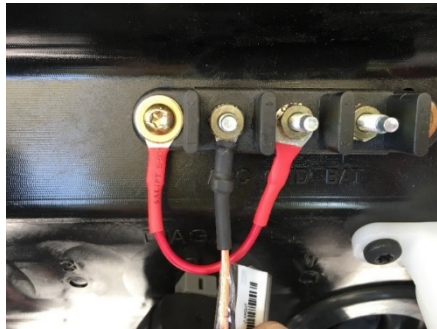
**If you place it somewhere else, the wires for the turn signal and dash indicators may not reach.



Hold off on connecting the power until the kit is completely installed and everything is wired and attached.

The red and black wires that come out the side of the Control Box Module will need to be attached to a **ground and power wire** but wait to do so.

Run the Red and Black wire through your firewall, back up to the factory bus bar, and **attach to the ACC and GND (ground) Terminals** or the **PULSE** power bar if your machine is equipped.



Eyelet Power Plug on some machines:



Pulse Bar and Pulse Bar Power Plug:




If you are installing the Sequential LEDs Jump to Step 5. If you are installing the 6 round amber LEDs continue to Step 4.

Step 4.
Install the 3x2 LEDs (6 amber round LEDs)

Run the harness with the 6 Amber LEDs from the front head lights (3 LEDs on each side) through the firewall and back to the main module under the dash. Plug it into the only plug that it fits. Drill three 3/4" holes under the front head lights (or wherever you'd like!) Install the 3 LEDs on each side by pulling the rubber grommet off each one, slipping the LEDs then the grommets through the hole. **Verify on the wires that LEDs with the LEFT sticker are on the Driver's side.** Place the rubber grommet in the hole first, and then slide the LED inside the grommet.



<p>Step 5. Install the Sequential Light strips</p>	<ol style="list-style-type: none"> 1. Back out your headlight bolts in order to leave about a 1/4" gap between the headlight and the front fascia, leaving enough room to fit the groove in the sequential strip along the gap. 2. Install the silicone LED strip so the groove along the back of the strip tucks behind. You are essentially pinching the LED strip in between the headlight and the front plastics. 3. Then tighten the headlights back so they are snug. <ol style="list-style-type: none"> a. NOTE: If you have a General and the gap is not wide enough for the LEDs to insert in between, utilize the included Longer Headlight bolts to allow for more space in your headlight gap. 	<p>Do not over-tighten your headlights or you will run the risk of crushing the LEDs themselves.</p> <p>If you find that there is not a large enough gap for your Sequential LEDs, give us a call and we can send you longer headlight bolts. (1-801-769-6770 or support@wdelectronics.com)</p>
	<ol style="list-style-type: none"> 4. As an alternate! You can use the included plastic brackets and mount your sequential strip any way you like. They will screw into any plastic surface and then you run the bottom of the strip into the brackets as shown here. 	
<p>Step 6. Connect Rear Taillights</p>	<p>The rear of the machine needs to tap into the existing factory rear taillights using the included splicing harness. To do this, first, unplug the factory connector plug from the driver's side located under the cargo area. (or under the bed on the General, near the center rear under the bed.)</p>	

Insert the included WD adapter plug in line with the existing connector. (Please note that different kits will have different adapter plugs. If yours doesn't fit, please email support@wdelectronics.com with a photo of your factory harness and the one provided). The single wires with the female end of bullet connectors will attach to the wires you will run next. The white part of this plug, with the 2-pin white plug attached, will be used later to provide power to the license plate.

RZR Plugs: 4-pin or 8-pin



General Plug: 4-pin



If you have a CENTER REAR TAIL-LIGHT on your RZR proceed to step 6a. If not, skip to Step 7.

Step 6a.
(Only if you
have a
Center
Rear
Taillight)

Remove the rear plastics to expose the plug behind the center rear taillight. Included in your kit is a 4-pin adapter plug with a long wire (approx. 2 feet) attached to it. Install this adapter in-line with the center rear taillight. Then route the long wire back to the plug you ran in step 6. Attach the bullet connector to the mating bullet connector labeled "Center Rear Taillight"



Step 7.
Run the long wires from the front to back of the machine:

Now you will run the rear blinker lights to the rear of the machine using the long set of wires with the 3 bullet connectors shown here.



The easiest way to route these long wires from the front to the back is to run them down the tunnel wires.



Connect the 3-pin plug to the Main Control Box module under the dash, and the bullet connectors on the opposite end will connect to the 2 female and 1 male connector on the rear taillight plug in the back. This wire will attach to the connectors as shown below:

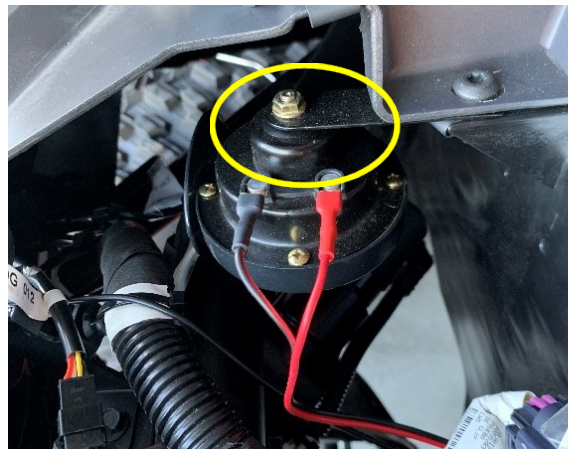
Test your Blinkers now!! (Make sure power is connected)

NOTE: When you test the blinkers, if they blink on the wrong sides, simply swap the FEMALE bullet connector wires you just ran.

One wire controls the driver-side rear blinker, and one controls the passenger-side rear blinker. The MALE Bullet connector does not need to be changed (There is only one place it will connect anyway).

Step 8.
Install Horn

Install horn on an existing bolt under the hood. Remove the bolt from the frame and re-insert it through the horn bracket.



Step 9.
**Install
Horn
Rocker
Switch in
the dash**

Remove or cut one of the rocker switch blanks from the dash in your desired spot for the horn button. Install the button by removing the harness from the back of the switch, then pressing the switch into the blank until it locks in place, and then reconnecting the rear harness back onto the backside of the switch.



Back of switch



Front of switch

Step 10.

Run the other side of the Horn harness back to the Main Control Box and attach it to the only connector that it fits in.

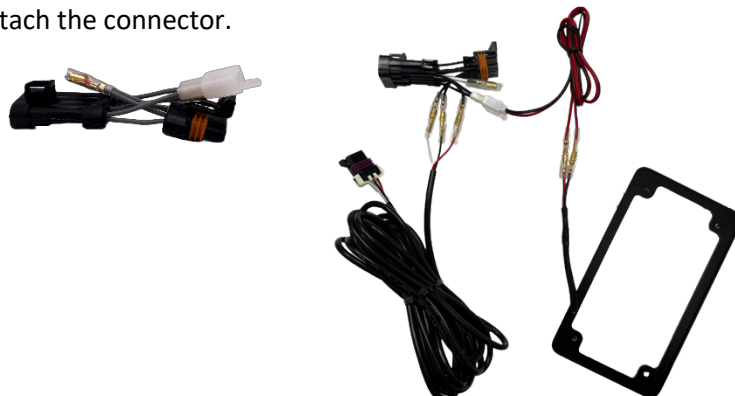
Step 11.
**Install
License
Plate**

Install the license plate bracket directly to the rear of the machine OR use the included aluminum bracket to hang it (both methods are shown).

You will need to drill a 3/8" hole in the top of the plastic bumper to mount the bolt. You can be creative with this as you can mount it anywhere on the back you want with the included aluminum bracket.



Run the wiring harness back to the taillight you attached the adapter with the white 2-pin connector. Attach the connector.



Stop and TEST

If the license plate LEDs don't light up, switch the Red and Black wires near the license plate frame.

Step 12. Dash Indicators

For Models that are compatible with Dash Indicators (Turbo S Models, and a **limited** number of other RZR and General models), the Dash indicators can integrate into existing Left and Right signals in the instrument cluster.

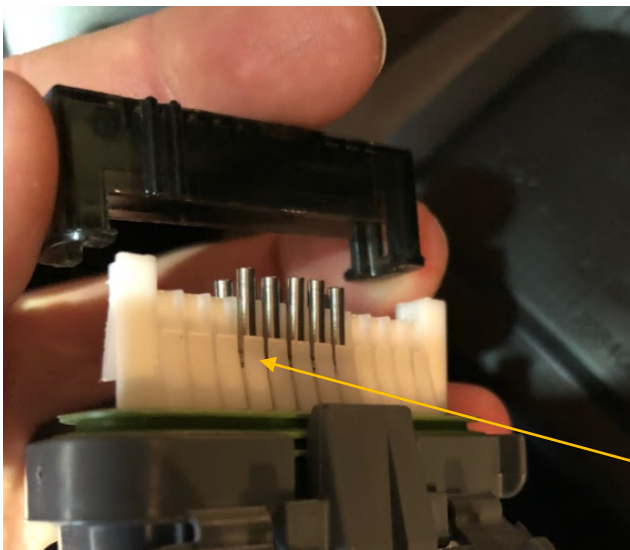
For most models, utilize the included Blue LEDs and accompanying harness to drill 2 holes in your dash, and insert these for your dash indicators.

WE DO NOT GUARANTEE THAT THE TURN SIGNAL ARROWS ON YOUR MACHINE WILL WORK. WE INCLUDE THESE BLUE LEDs FOR THIS REASON.



For compatible machines, for integration into the instrument cluster, continue below:

1. Unplug the instrument clusters plug from behind the DRIVERS SIDE Instrument Cluster (NOT THE RIDE COMMAND SCREEN) and open the back.
2. Pull out plastic pin inserts from numbers 6 and 7 from the back
3. Remove the front plastic covering from the front side of the pins



4. Insert pins into plug and make sure they line up evenly with the other existing pins. The **Black** wire will go in position **6**, and the **Red** wire will go in position **7**.

If your instrument cluster arrows are showing backward, simply swap these 2 wires. To do this, you can lift up the Piano Key-looking white plank and the wires will slide right out the back.

5. Re-attach the plastic covering and reassemble plug.

**Step 13.
Attaching
your
License
Plate**

Installing the plate functions best if you use a pair of regular scissors and cut a small 1/4" tab out the top of the license plate as shown in the pictures to the right. Leave enough space for the wires to come through. Bend the tab over so it lays flat (or file it off)

Use a 3/8" drill bit to install the mounting bracket to your bumper.



Common Troubleshooting Tips

1. There is ONLY one place that each wiring harness will connect to on the Main Control Box. Each wiring harness will end up at the control box, as none of them connect to each other. This is helpful if you are confused about which wiring harness to use.
2. If your license plate does not light up, when the switch is turned on, swap the red and black wires that are 6 inches from the plate. Black on Red, and Red on Black.
3. When you test the blinkers, if the rear taillight blinkers blink on the wrong sides, simply swap the black and white bullet connectors coming out of the taillight in-line plug ran in step 6. This will reverse the left and right turn signals.
4. If the front Blinkers blink on the wrong size, swap the wires leading up to them.
5. If nothing is turning on (or your instrument cluster doesn't turn on), check your fuses. Look at the headlight or the ACC fuse.

For additional support email support@wdelectronics.com