

How to Update your Kestrel 5000 Series Firmware using MAC/OSX

▣ Requirements

- NK [Bluetooth Dongle](#)* (if LiNK compatible)
(or)
- NK [USB Data Transfer Cable](#)
(and)
- [Kestrel LiNK for MAC Program](#)
- Kestrel 5000 Series unit
- MAC computer**

Ballistic users SHOULD save their guns prior to performing this update as they may be erased.

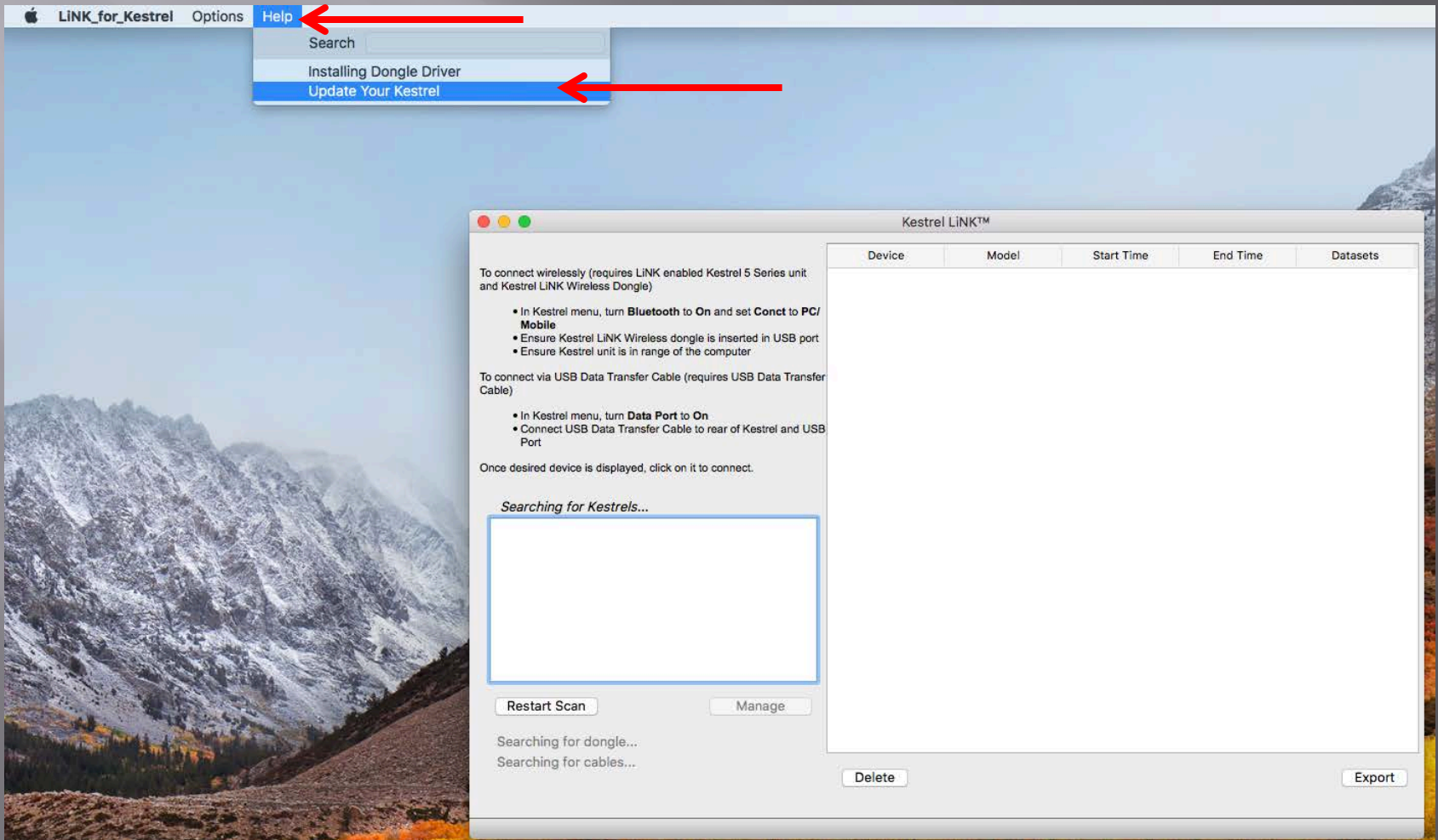


*You cannot use the same Bluetooth dongle that was used with 4000 series.

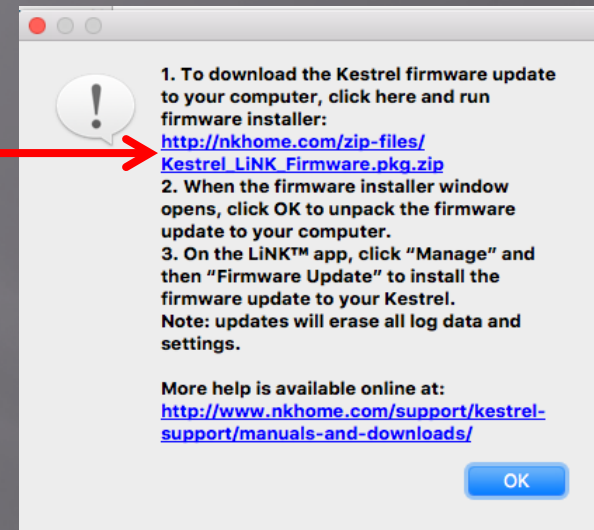
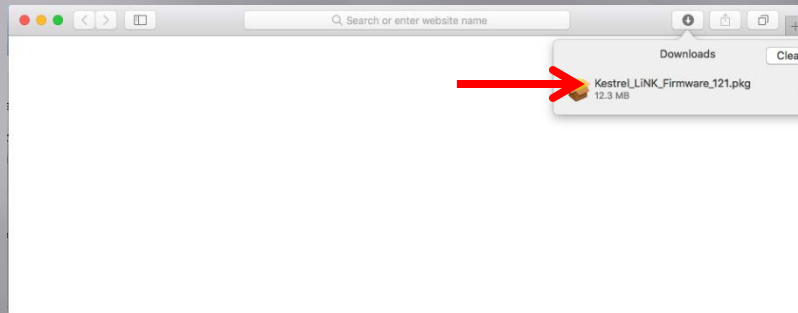
** This process is only for LiNK for MAC/OSX. For LiNK for Android or LiNK for iOS, the process is automated when you open the application.

1) After downloading and installing LiNK for MAC, open the application.

2) First you will need to download the latest firmware to your computer. To do this, click on the Help Tab and open up *Update Your Kestrel*. This will be found at the very top of the monitor screen.

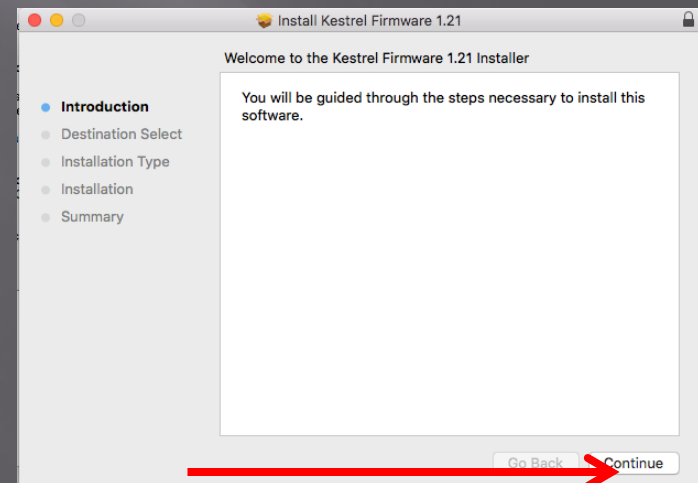


3) Click on the link in Step 1

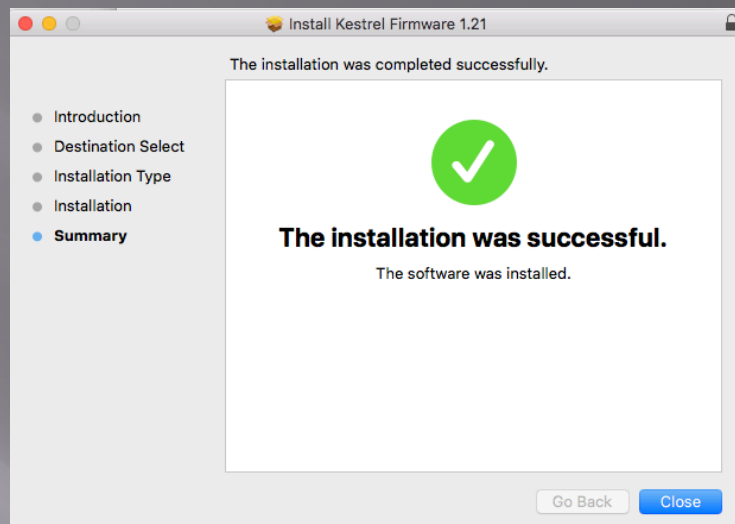


4) Once the file is downloaded, double click on it to open and run.

5) When the program begins the install process, click continue until the install is completed.



6) Follow the prompts to install the latest firmware onto your computer.



7) Next we will need to connect the Kestrel to the LiNK for MAC/OSX Application.

If you are using Bluetooth (i.e., LiNK Enabled):

On the Kestrel

- Turn Bluetooth to **ON**
- Press center button on Bluetooth and Set Conct to **PC/MOBILE**. **Turn Privacy Pin off.**

On the computer

- Insert Bluetooth dongle.

On the application

- It should say "Connected to Dongle". If it still says "Searching for Dongle" please reinsert into a different USB port. If still having issues, disconnect all peripherals from computer, turn off computer for 5 minutes and then reboot and reconnect peripherals.

If you are using USB Transfer Cable:

On the Kestrel

- Turn Data Port to **ON**.

- Plug USB cable into back of Kestrel

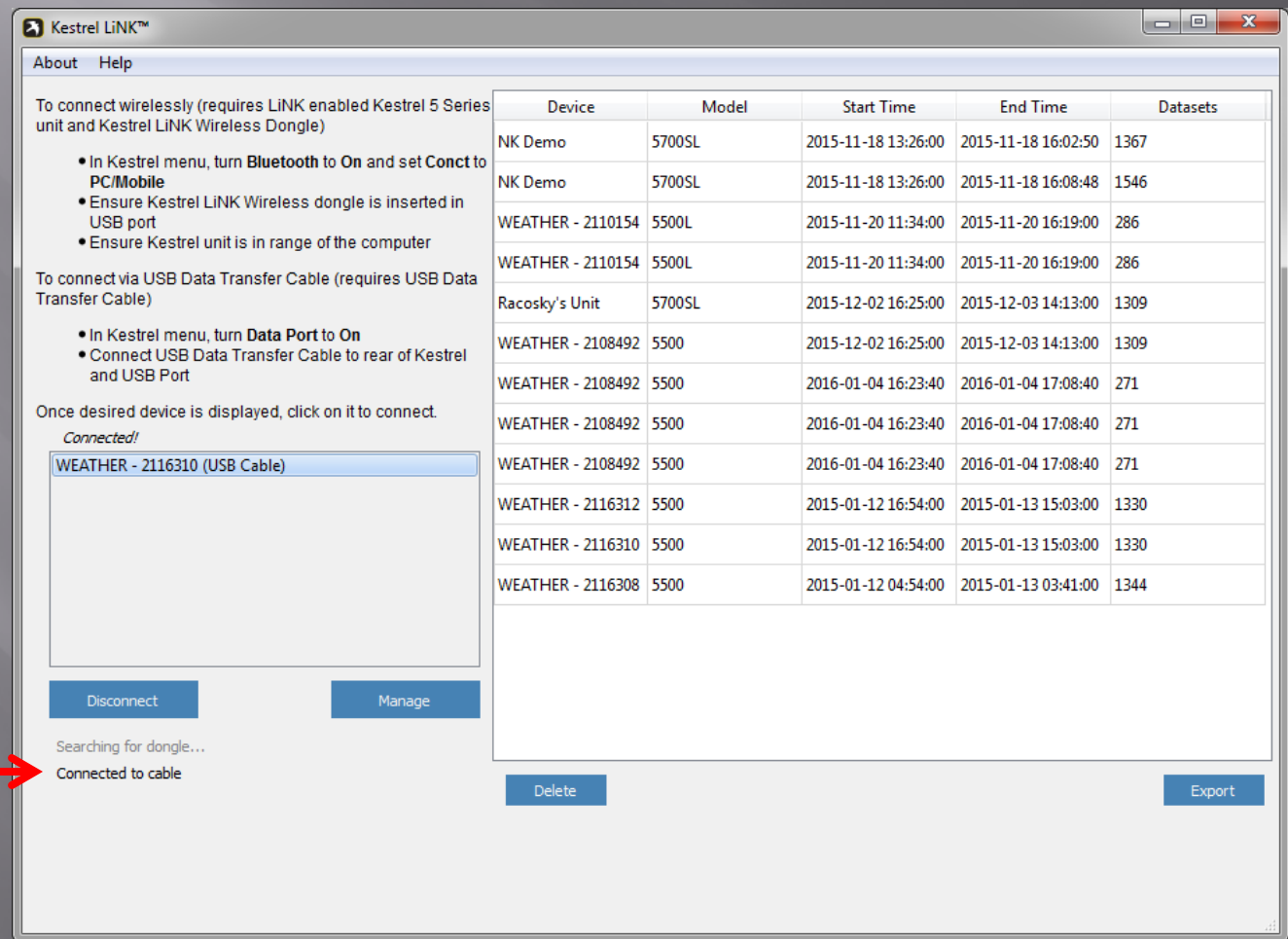
On the computer

- Plug USB end of cable into computer.

On the application

- It should say “Connected to Cable” (as shown below)

Please Note: The computer may take some time to install the driver the first time that the USB Data Cable or Bluetooth Dongle is inserted into the computer. Please allow some time for setup to occur. You may have to close and reopen the program after the driver is installed.



8) Select your Kestrel when it appears in the application.

9) Select the Manage Tab.

10) Select Firmware Update.

Kestrel LiNK™

About Help

To connect wirelessly (requires LINK enabled Kestrel 5 Series unit and Kestrel LiNK Wireless Dongle)

- In Kestrel menu, turn **Bluetooth** to **On** and set **Connect** to **PC/Mobile**
- Ensure Kestrel LiNK Wireless dongle is inserted in USB port
- Ensure Kestrel unit is in range of the computer

To connect via USB Data Transfer Cable (requires USB Data Transfer Cable)

- In Kestrel menu, turn **Data Port** to **On**
- Connect USB Data Transfer Cable to rear of Kestrel and USB Port

Once desired device is displayed, click on it to connect.

Connected!

WEATHER - 2116310 (USB Cable)

8

9

Disconnect

Manage

Searching for dongle...

Connected to cable

Device	Model	Start Time	End Time	Datasets
NK Demo	5700SL	2015-11-18 13:26:00	2015-11-18 16:02:50	1367
NK Demo	5700SL	2015-11-18 13:26:00	2015-11-18 16:08:48	1546
WEATHER - 2110154	5500L	2015-11-20 11:34:00	2015-11-20 16:19:00	286
WEATHER - 2110154	5500L	2015-11-20 11:34:00	2015-11-20 16:19:00	286
Racosky's Unit	5700SL	2015-12-02 16:25:00	2015-12-03 14:13:00	1309
WEATHER - 2108492	5500	2015-12-02 16:25:00	2015-12-03 14:13:00	1309
WEATHER - 2108492	5500	2016-01-04 16:23:40	2016-01-04 17:08:40	271
WEATHER - 2108492	5500	2016-01-04 16:23:40	2016-01-04 17:08:40	271
WEATHER - 2108492	5500	2016-01-04 16:23:40	2016-01-04 17:08:40	271
WEATHER - 2116312	5500	2015-01-12 16:54:00	2015-01-13 15:03:00	1330
WEATHER - 2116310	5500	2015-01-12 16:54:00	2015-01-13 15:03:00	1330
WEATHER - 2116308	5500	2015-01-12 04:54:00	2015-01-13 02:41:00	1344

Delete

Export

Manage

Device Information

Name: AB - 2304012 Firmware Ver: 1.15

Model: 5700AL Hardware Ver: Rev 11B

Serial Number: 2304012 Profile Ver: 0.06

Name:

11) You will now be prompted if the latest firmware is not currently on your device. Please select Yes to update the firmware (it will erase your data on the device).

12) Please wait for the Kestrel to reboot after the progress bars are completed. Once the Kestrel reboots, the new firmware will be on your device.

