



**TORI MURPHY**

WOVEN & MADE IN ENGLAND

*Roman Blind*  
**Instructions**

2022

WWW.TORIMURPHY.COM

# Installing the cassette Roman Blind

Thank you for purchasing this product. Please read the instructions and warnings carefully beforehand to ensure safe and satisfactory use of this product.

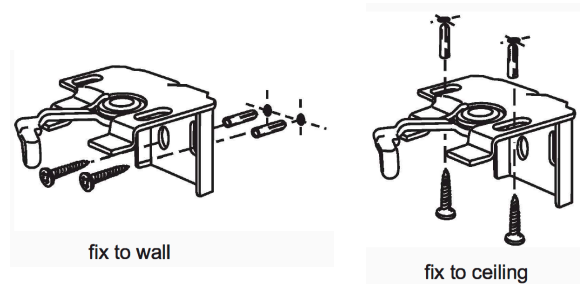
It is recommended that this blind should only be installed by persons competent in DIY.

## 1. Fixing the brackets

The brackets are designed for face or top fixing to frame, wall or ceiling.

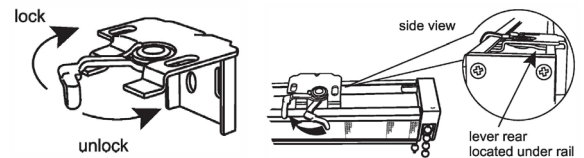
**A.** Mark through the screw holes the position for the cam supports making sure they are level and in line, check with a spirit level.

**B.** With the brackets removed, drill each bracket screw position. Fix brackets into place using screws provided, check alignment and level as you go. Use the wall plugs provided for plaster and masonry walls. We recommend for plaster walls a wooden batten be secured first.



## 2. Installing the rail

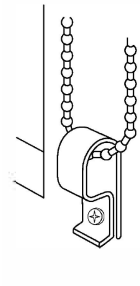
With the cam lock supports in the unlocked position, mount the rail onto the supports by resting the front lip of the rail onto the front of the supports. Secure by sliding the cam lever on the supports into the locked position.



## 3. Fitting The Safety Clip

This device is used to prevent the control chain from forming a hazardous loop and must be fitted.

**(i) Positioning:** The safety clip shall be installed at the maximum distance possible from the control mechanism to prevent the looped chain from becoming slack. Place the chain loop inside the safety clip. Take up any slack and check to ensure that the chain is under tension. Do not apply excessive tension as this may affect the operation of the product. Mark the fixing hole at this position.

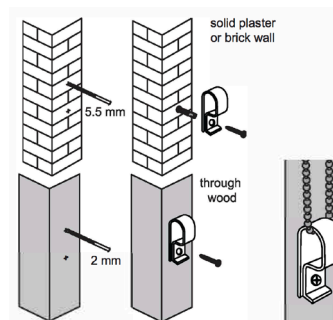


### (ii) Fitting:

**Solid Plaster Walls** - Drill a 5.5mm hole and insert the wall plug provided before screwing into this.

**Wood Fixing** - Drill a 2mm pilot hole and use the screw provided, screwing directly into the wood.

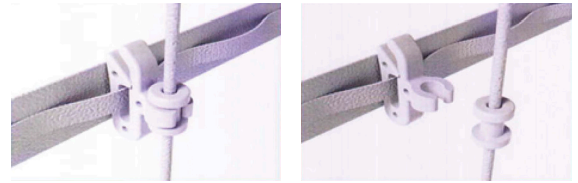
**All other surfaces** - (Hollow plaster board, UPVC, Metal etc) Special fixings are required for these surfaces (not supplied). You will need to purchase these separately from a DIY store.



Check that the chain is under continuous tension.  
**Important! Ensure the safety clip has been fitted to a sound and secure surface.**

**(iii) Additional Child Safety Feature**

Your blind has been pre-fitted with rear cord clips that are designed to safely detach the cord from the main blind should a child become entrapped. If any of the clips accidentally detach, simply clip back into position.



Break away rear cord clips

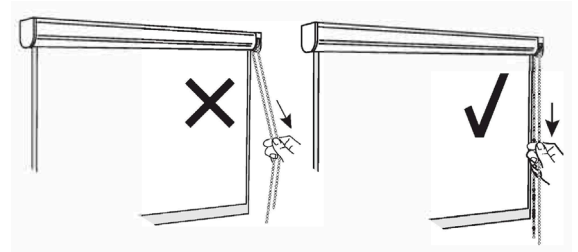
**4. Operating the blind**

Pulling the chain in either direction will raise or lower the blind to the desired height.

**Note! Excessive force may damage the product.**

**5. Cleaning your blind**

Made to order products should be cleaned by a professional dry cleaners. Only the fabric of the blind can be dry cleaned. All cord bars, clips and hooks must be removed before cleaning.



To lengthen the time between cleaning and to prevent dust from becoming engrained into the fibres, vacuum your blind regularly using the correct soft furnishing attachments.

If you have a set of products in the same fabric, always clean them together, this helps to avoid colour variations over a period of time.

**6. Assembly after cleaning**

Thread rods carefully back under the tapes. Place the bottom bar back into hem and stitch the end closed. Attach blind to track using fix end close tape. Thread cords through the safety clips as shown in this picture.



**Note:** Do **NOT** thread the cord through the tape as this will not allow cords to break away safely if a child becomes entrapped.

When the cord has been fed through the last safety clip, feed it through the clear round toggle and secure with double knots.

3  
|

**! WARNING !**

- Young children can be strangled by loops in pull-cords, chains, tapes, and inner cords that operate the product.
- To avoid strangulation and entanglement, keep cords out of the reach of young children. Cords may become wrapped around a child's neck.
- Move beds, cots & furniture away from window covering cords.
- Do not tie cords together. Make sure cords do not twist and create a loop.

Persons in charge of young children are ultimately responsible for following the safety instructions provided by the manufacturer and to use any safety device supplied.

**Please retain these instructions for future reference.**



We're always here to give you a  
helping hand, drop us a line below

01158 241 305  
madeforme@torimurphy.com

WWW.TORIMURPHY.COM