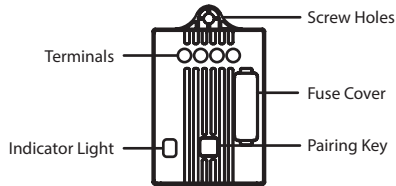




Wireless Receiver Manual

Product Description

Flash wireless receiver can be used with Flash wireless kinetic energy switches to control electrical components.

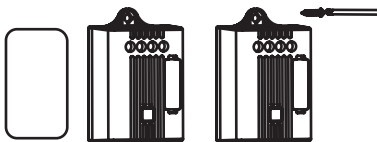


Technical Specification

- Working Temperature: -20 ~ 55°C
- Receiver Distance: 80m (outdoor) • 25m(indoor)
- Sensitivity: -110dBm
- Voltage Range: 100~240V • 50/60Hz
- Rated Power: 600W (WR-303) • 1000W (WR-304)
- Frequency: 433Mhz
- Storage Capacity: Multiple Switches

Note: The effective distance data is measured by Flash Quality Control and it will vary due to the changes of the environment in the actual use.

Mounting Installation



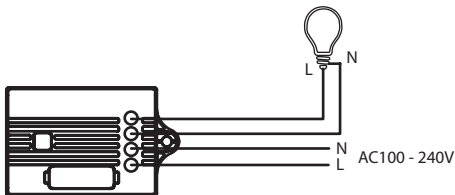
Method 1:

Use double-sided adhesive tape to paste the receiver on a stable smooth and clean surface.

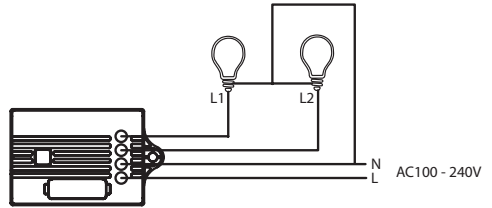
Method 2:

Mount the receiver on a stable surface using screws.

Wiring Connection: 1 Way (WR-304)



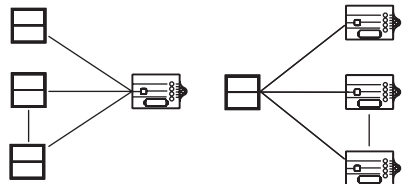
Wiring Connection: 2 Way (WR-303)



Combination Method

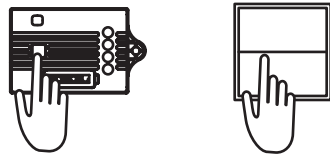
This receiver can pair with kinetic switches freely and can form two modes:

- One receiver to multiple switches mode.
- Multiple switches to one receiver mode.



Ordinary Paring Method

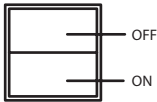
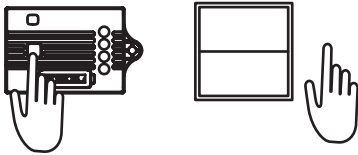
1. Connect the receiver's input to the power supply, press the controller "pairing key" for 3 seconds, release when indicator light slowly flashes (1 time per second).
2. Press the selected kinetic switch once (Do not press several times continuously) the indicator light will switch OFF, this means the paring is successful.
3. To pair with multiple switches, repeat the above procedure. Please note one controller can be paired with multiple switches.
4. After the paring is successful, press the kinetic switch to control receiver. In the case of no connected loads, you can know the receiver status by the ON/OFF indicator light.



Directional Pairing (Not Common)

In order to meet the user's habits of the switch and to ensure that the multiple receiver can be turned ON/OFF at the same time in the one to multiple mode. Directional pairing only supports 2, 4 and 6 gang push button switches.

1. Connect the receiver's input to the power supply and press the "pairing key" for 3 seconds, release key when indicator light flashes slowly (1 per second).
2. Press left or right key twice within half second, the indicator light will then switch off, this means the pairing is successful.
3. After directional pairing is successful the left button can only turn OFF and the right button can only turn ON. Long press the left button to dim, long press the right button to brighten.



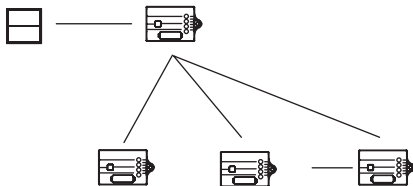
Clear Pairing Memory

Long press the receiver "pairing key" for 12 seconds, the indicator light will flash slowly, quickly, stable and then off. After indicator light is off, pair switches again.

Bridging Mode

Under the one-to-multi mode control, when the distance is long or there is multiple walls between the switch and the receiver, the signal will be weakened, and the control will not be effective.

1. Pair all receiver's first with the switch. Turn ON the bridging mode of the receiver closest to the switch (receiver 1).
2. Long press the receiver 1 "pairing key" for 7 seconds and release. When the indicator light is flashing quickly. Wait a few seconds after the light flashes once every two seconds, this means that the receiver bridging mode is open.
3. When turning on bridging mode, the receiver will enhance the switch signal to receiver 2 up until receiver N. Preventing the loss of signal.



Troubleshooting

1. Controller cannot work after it is powered ON:

Remedy: If the loads exceeds the rated current or short circuit occurs the fuse may blow. Exclude the short circuit first, open the cover and replace the same specification fuse.

2. When the load is LED, the LED lamp has weak glow in the OFF state.

Remedy: Please follow the L (live line) and N (neutral line) symbols on the controller to correctly wire the neutral and live line at the input part.

