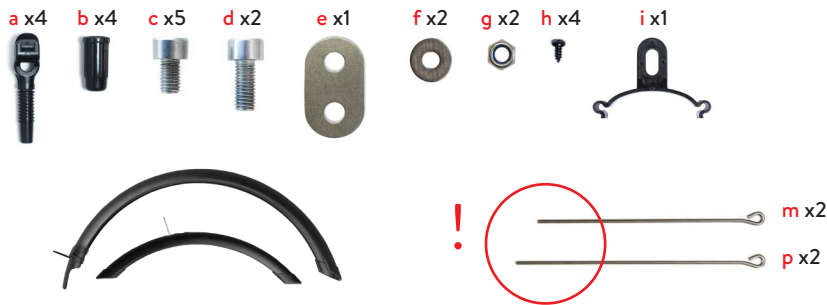
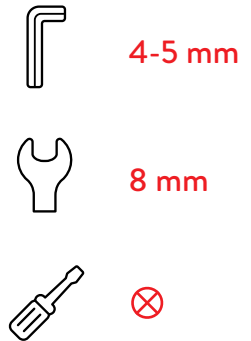


# Kit



# Tool



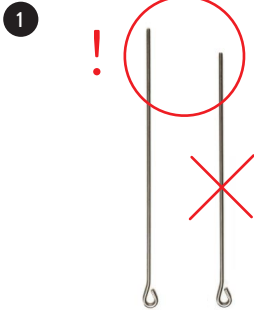
## Vorne • Front

- c+4mm • e • g+8mm
- 
- open with 5mm
- open the brake
- 
- insert
- tight with 4+5 mm
- ! m x2
- a x2 • b x2
- click!

left and right
- c x2 • tight with 4mm • left/right
- h x2 • left and right



## Hinten • Rear



**p** x2



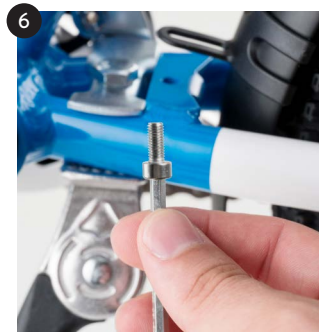
**a** x2 • **b** x2



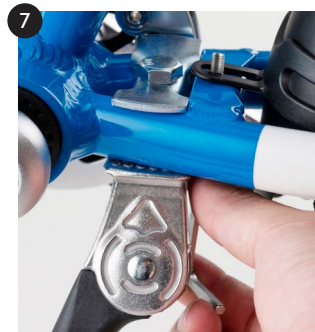
left and right



insert



**d** x1+4mm



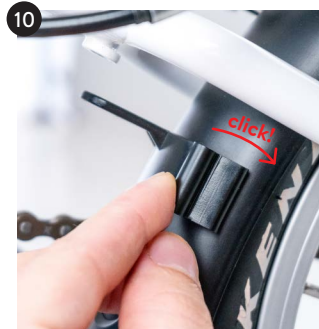
insert + 4mm



**f** x1



**g** x1 • tight with 4+8mm



**i** x1 • mount



**d** x1 • **f** x1 • tight with 4mm



**c** x2 • tight with 4mm • left/right



align



**h** x2 • left and right