

PIRANHA P12 DUAL MK11

- Surface Mounted.
- Ultra powerful class leading 5700 Fixture Lumens.
- 2 models to choose from, single colour or Dual Colour.
- Ultra compact low profile design, suitable for transom and side mounting on all hull types.
- Simple installation just one small cable entry hole and 3 mounting screws.
- Built in driver technology with active thermal rollback.
- Additional Sealing Systems for 2018.
- Suitable for in and out of water use.
- 60 degree beam.



PIRANHA	P12 DUAL MK11
Colours:	● ○ ● ○
Boat Size:	up to 20m/65ft
Lumen Output:	5700
Current:	12V 4.6A; 24V 2.35A



PIRANHA P24R, P24 DUAL, P24 CC

- Surface Mounted.
- Top of the range with an incredible 10,000 Fixture Lumens, nothing comes close to the power of the P24R.
- 3 models to choose from, single colour, Dual Colour or RGBW colour change.
- Ultra compact low profile design, suitable for transom and side mounting on all hull types.
- Simple installation just one small cable entry hole and 3 mounting screws.
- Built in driver technology with active thermal rollback.
- Additional Sealing Systems for 2018
- Suitable for in and out of water use.

PIRANHA	P24R, P24 DUAL, P24 CC
Colours:	● ○ ● ● ●
Boat Size:	30m/105ft
Lumen Output:	10000
Current:	12V 10.0A; 24V 5.0A



MORE ABOUT BLUEFIN LED...



Designed, manufactured and assembled in the UK by a team of passionate and highly skilled industry experts with over a decade of experience in LED Underwater Lighting.

Technically superior and quality assured, our advanced Underwater LED boat lights are crafted from the finest sourced components and materials and can be used to provide breathtaking night time illumination on all types of boat and yacht from the smallest RIB to the largest Superyacht.

Quality, care, innovation and passion go into each and every one of our products and this is clear to see throughout the range. We were also unique in offering internal driver systems as standard to reduce both cost and installation time for the end user.

Whatever your requirements, Bluefin LED can provide an exceptionally reliable, maintenance free and highly economical solution.

From left to right:

Samantha Barrie (Office Manager)

Simon Steadman (Commercial Director)

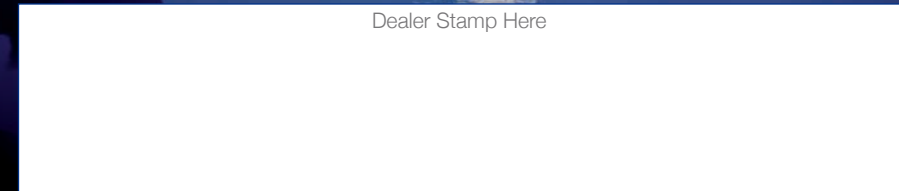
Chris Harris- Marsh (Technical Director)

Mark Branson (Operations Director)

Mike Cook (Global Sales Manager)



Dealer Stamp Here



For more information, give us a call on +44 (0) 1827 880450 or visit www.BluefinLED.com



QUALITY • RELIABILITY • PERFORMANCE

PIRANHA — SERIES —



PIRANHA P3 MK11

- Surface mounted.
- Class leading 1500 fixture lumens.
- Compact & low profile suitable for all hull types.
- Simple 2 wire installation, small cable entry hole.
- Internal driver with thermal trip.
- Additional Sealing Systems for 2018.
- 60 degree beam.

PIRANHA	P3 MK11
Colours:	● ○ ● ●
Boat Size:	up to 7m/25ft
Lumen Output:	1500
Current:	12V 1.2A



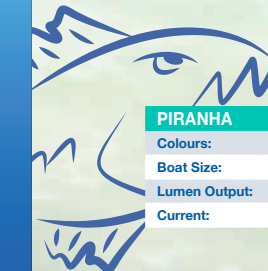
PIRANHA P6 NITRO MK11

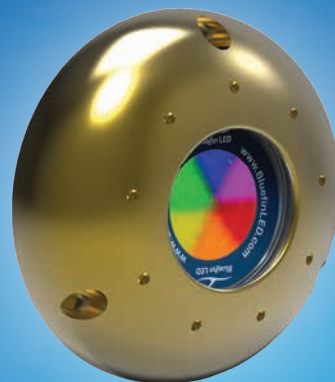
- Surface Mounted.
- Hi power low profile compact design.
- Built in driver technology with active thermal rollback.
- Suitable for in and out of water use.
- 60 degree beam.

PIRANHA P6 CC MK11

- Surface Mounted.
- Almost infinite colour combinations available.
- Precision Timing Technology (PTT) Synchronises the lights without the need for costly external controllers.
- Suitable for all types of boats, perfect for transom and side mounting on all hull types.
- Built in driver technology with active thermal rollback.
- Additional Sealing Systems for 2018.
- Suitable for use in and out of water use.
- 60 degree beam.

PIRANHA	P6 NITRO MK11	P6 CC MK11
Colours:	● ○ ● ● ●	● ● ● ● ● ● ● ●
Boat Size:	14m/45ft	up to 14m/45ft
Lumen Output:	3200	2700
Current:	12V 3.5A; 24V 1.8A	24V 2.0A; 12V 4.0A

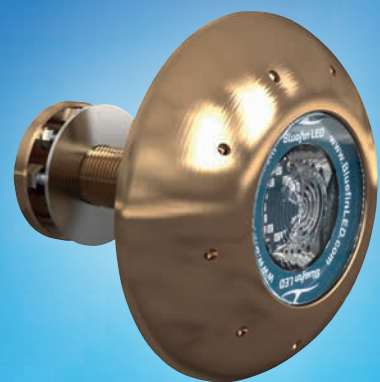




VIPER V12 & V24 CC

- Surface mounted.
- 2 models to choose from, single colour or RGBW Colour Change with WIFI DMX functionality.
- A radical departure from conventional sealing methods the Viper has an unique rear cassette design with multiple sealing systems.
- Compact design makes the Viper V12 the perfect choice for all types of boats and is suitable for transom and side mounting on all hull types.
- Suitable for Transom mounting on all hull types.
- Built in driver technology with active thermal rollback.

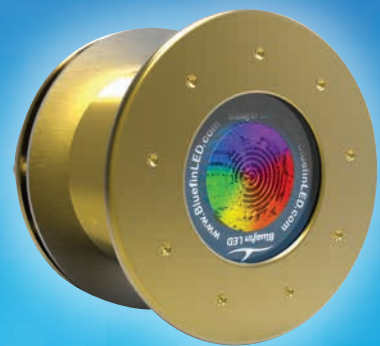
VIPER	V12	V24 CC
Colours:		
Boat Size:	up to 20m/65ft	up to 20m/65ft
Lumen Output:	6800	6500
Current:	12V 5.0A	24V 2.6A (external driver)



MANTA RAY MR20 & MR48 CC

- Thru-hull.
- Formidable performance with the added security of a thru-hull stem fitting.
- 2 models to choose from, Single colour or RGBW Colour Change model with WIFI DMX functionality.
- A radical departure from conventional sealing methods the Manta Ray has an unique rear cassette with multiple sealing system.
- Machined from Billet AB2 Marine grade Bronze.
- Suitable for Transom mounting on all hull types.
- Built in driver technology with active thermal rollback.

MANTA RAY	MR20	MR48 CC
Colours:		
Boat Size:	up to 30m/105ft+	up to 30m/105ft+
Lumen Output:	13000	12000
Current:	24V 5.1A	24V 6.5A (external driver)



GREAT WHITE GW20 & GW48 CC

- Thru-hull Interchangeable.
- Top of the range Great White Underwater Lights offers almost unlimited mounting options thanks to a ultra low profile bezel and compact body.
- Additional sealing systems, software and electronics updates for 2018.
- Thru Hull mounting offers secure fixing with the additional benefit of a removable LED cartridge which can be serviced from inside the hull, eliminating the need to haul.
- Suitable for Transom and side mounting on all hull types.

GREAT WHITE	GW20	GW48 CC
Colours:		
Boat Size:	up to 30m/105ft+	up to 30m/105ft+
Lumen Output:	13000	up to 12000
Current:	24V 5.1A	24V 6.5A (external driver)

INTERIOR / EXTERIOR LIGHTING



- The perfect solution for interior or exterior lighting on any vessel, powerful light output with ultra low power consumption.
- Use for safety or to enhance the natural beauty of your boat.
- Polished 316L.

NEW FLOOD-SPREADER-UTILITY LIGHTS

INTERIOR / EXTERIOR LIGHTING	COURTESY LIGHTING	FLOOD-SPREADER-UTILITY LIGHTS
Colours:		



ORCA O20 & O48 CC

- Surface mounted.
- The most powerful surface mounted Underwater LED lights available.
- 2 models to choose from, Single colour or RGBW Colour Change model with WIFI DMX functionality
- A radical departure from conventional sealing methods the Orca has an unique rear cassette design with multiple sealing systems
- Machined from Billet AB2 Marine grade Bronze.
- Suitable for Transom mounting on all hull types.
- Built in driver technology with active thermal rollback.

ORCA	O20	O48 CC
Colours:		
Boat Size:	up to 30m/105ft+	up to 30m/105ft+
Lumen Output:	13000	12000
Current:	24V 5.1A	24V 6.5A (external driver)



MAKO M12 & M24 CC

- Thru Hull Interchangeable.
- Unrivalled performance with almost unlimited mounting options thanks to the low profile bezel and compact body. Thru Hull fixing provides a safe & secure fixing with the added benefit of a removable LED cartridge that can be serviced or upgraded from inside the hull eliminating the need to haul the boat.
- M24 CC model has almost Endless Colour combinations to choose from, lights can be cycled, strobed, dimmed or beat to the sound of your music with our unique "sound to light feature".
- Additional sealing systems, software and electronics updates for 2018.
- Suitable for transom, side and under hull mounting on all hull types.

MAKO	M12	M24 CC
Colours:		
Boat Size:	up to 20m/65ft	up to 20m/65ft
Lumen Output:	6100	6500
Current:	12V 5.1A; 24V 2.6A	12V 5.1A; 24V 2.6A (external driver)

BLUEFIN LED ON/OFF SWITCH

Compatible with all Signature Series and Piranha Series single-colour lights and also compatible with Piranha Dual Colour and Colour Change models.

The perfect solution for simple use of your underwater lighting.



WIFI DMX CONTROLLER

Compatible with all Signature Series Colour Change models, select the desired colour, brightness via the glass touch-pad and colour wheel. Built-in WiFi connection enables you to connect directly from your iPhone/Android or tablet. Our unique "sound to light feature" enables lights to beat to the sound of the music. Use Strobe feature to flash your lights to attract fish or for safety panic mode.



COLOUR CONTROLLERS	BLUEFIN SWITCH	WIFI DMX
Current:	12/24V DC	12/24V DC
	Compatible with all Signature Series and Piranha Series single-colour lights and also compatible with Piranha Dual Colour and Colour Change models.	Compatible with all CC models except Piranha CC

DOCK LIGHT SERIES



- Surface Mounted underwater Dock Light.
- The Piranha DL6D, DL6D CC and DL12D are powerful yet affordable solutions for those looking to create stunning illumination on any marina, dock or water feature.
- Polished 316L.

NEW PATHWAY LIGHT

DOCK LIGHTS	DL6D	DL6D CC	DL12D	PATHWAY LIGHT
Colours:				
Lumen Output:	3200	2700	5700	600
Current:	24V 1.0A	24V 2.0A	24V 2.35A	12V 500mA @ 12V ac