

WTB Speedterra 12 x 157 Rear Hub

W135-0636 Speedterra 12x157, 32 hole, Shimano Driver

W135-0637 Speedterra 12x157, 32 hole, XDR Driver

Shimano Freehub (#20)

No.	Description	Qty
6	Freehub Spacer	1
7	Pawl	4/6
8	Spring	4/6
9	15x24x5 Bearing	1
11	Freehub Body	1
13	Bearing Spacer	1
2	15x28x7 Bearing	1
15	Freehub Seal	1
16	Cassette Spacer	1

Sram Freehub (#21)

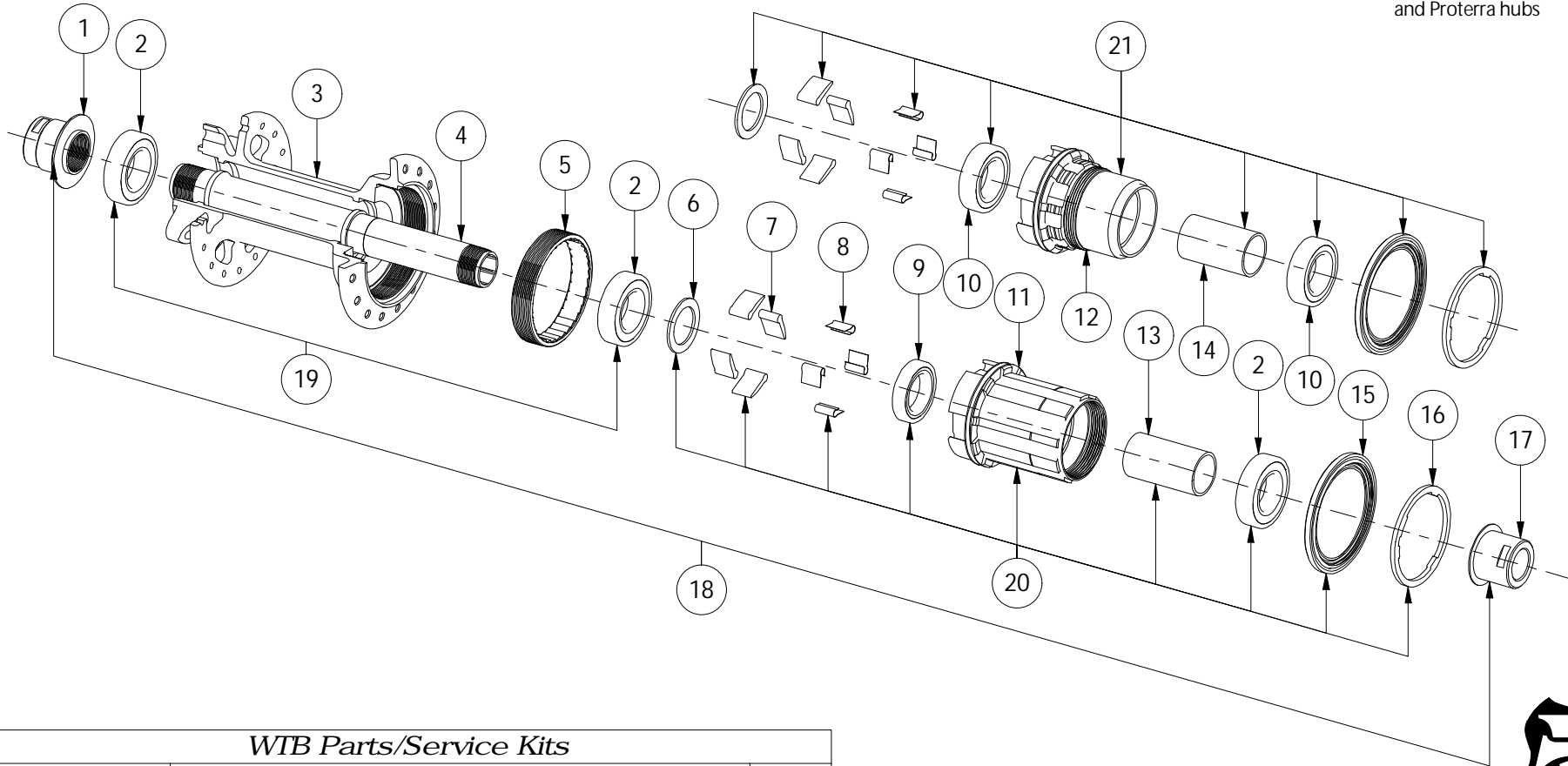
No.	Description	Qty
6	Freehub Spacer	1
7	Pawl	4/6
8	Spring	4/6
10	15x26x7 Bearing	2
12	Freehub Body	1
14	Bearing Spacer	1
15	Freehub Seal	1
16	Cassette Spacer	1

Main Hub

No	Description	Qty
1	M12 Left End Cap	1
2	15x28x7 Bearing	3
3	Hub Shell	1
4	157mm Axle	1
5	Ratchet Ring	1
17	M12 Right End Cap	1

Notes:
Speedterra hubs have freehubs with 4 pawls/springs.
Proterra hubs have freehubs with 6 pawls/springs.

Replacement freehubs will have 6 pawls/springs and fit in both Speedterra and Proterra hubs



WTB Parts/Service Kits		
Part Number	Description	No
W035-0123	M12x142/148/157 End Cap Kit	18
W035-0133	Bearing Kit (15x28x7), 2Pcs	19
W035-0129	157mm Axle	4
W035-0125	Shimano Freehub Kit	20
W035-0127	Sram Freehub Kit	21

