

# WTB Speedterra and Proterra

## 12 x 148 Rear Hub

W135-0659 Proterra 12x148, 32 hole, XD Driver

W135-0663 Speedterra 12x148, 32 hole, XD Driver

W135-0665 Proterra 12x148, 32 hole, Shimano Driver

W135-0667 Speedterra 12x148, 32 hole, Shimano Driver

### Shimano Freehub (#20)

No.	Description	Qty
6	Freehub Spacer	1
7	Pawl	4/6
8	Spring	4/6
9	15x24x5 Bearing	1
11	Freehub Body	1
13	Bearing Spacer	1
2	15x28x7 Bearing	1
15	Freehub Seal	1
16	Cassette Spacer	1

### Sram Freehub (#21)

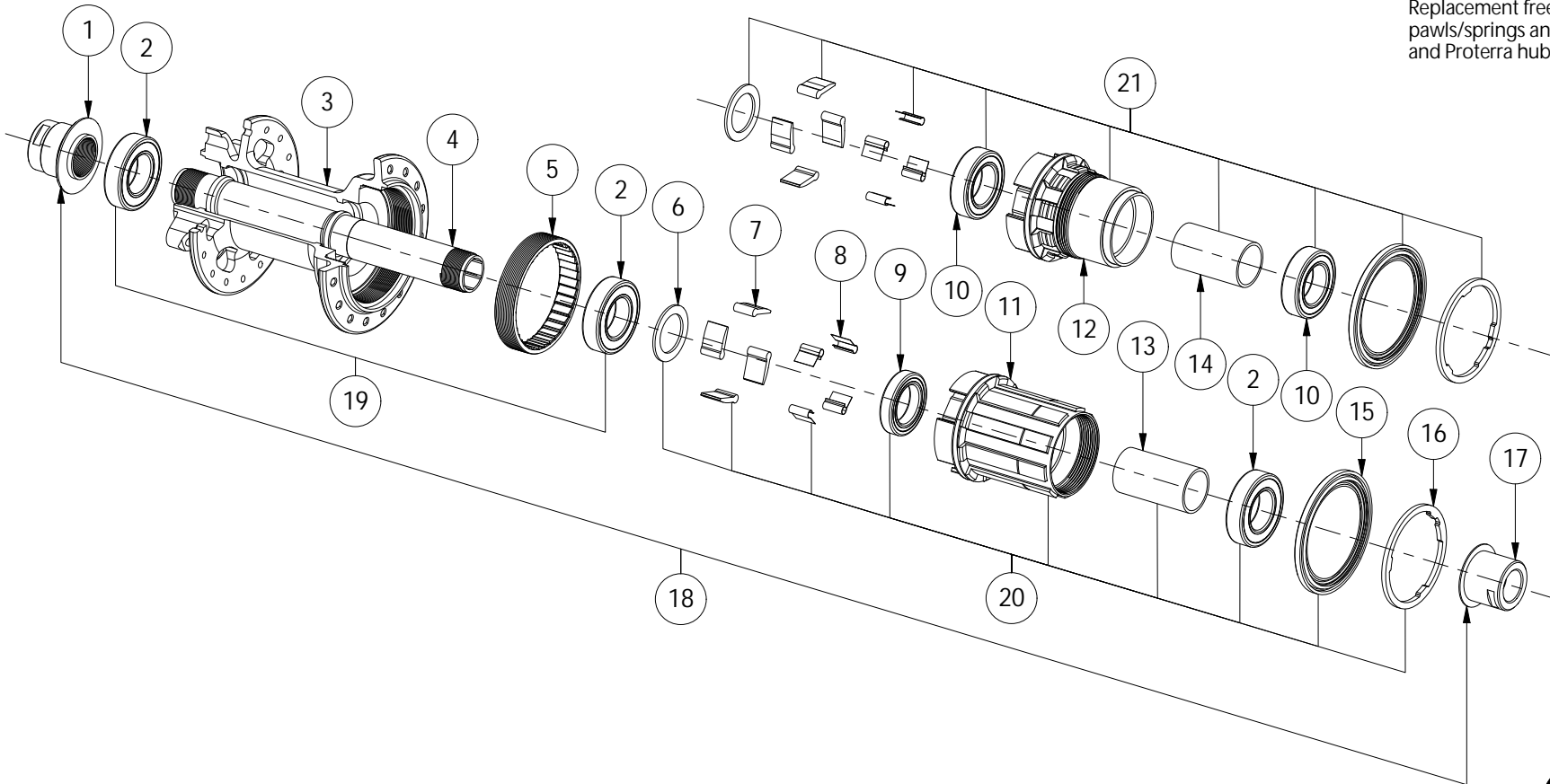
No.	Description	Qty
6	Cassette Spacer	1
7	Pawl	4/6
8	Spring	4/6
10	15x26x7 Bearing	2
12	Freehub Body	1
14	Bearing Spacer	1
15	Freehub Seal	1
16	Freehub Spacer	1

### Main Hub

No.	Description	Qty
1	M12 Left End Cap	1
2	15x28x7 Bearing	3
3	Hub Shell	1
4	148mm Axle	1
5	Ratchet Ring	1
17	M12 Right End Cap	1

Notes:  
Speedterra hubs have freehubs with 4 pawls/springs.  
Proterra hubs have freehubs with 6 pawls/springs.

Replacement freehubs will have 6 pawls/springs and fit in both Speedterra and Proterra hubs



WTB Parts/Service Kits		
PART NUMBER	DESCRIPTION	ITEM
W035-0123	M12x142/148/157 End Cap Kit	18
W035-0133	Bearing Kit (15x28x7), 2Pcs	19
W035-0128	148mm Axle	4
W035-0125	Shimano Freehub Kit	20
W035-0127	Sram Freehub Kit	21

