



WTB®



#RIDEWTB

#RIDEWTB



AN INTRODUCTION TO OUR 2019 PRODUCT LINE

This product guide is more than a simple catalog of WTB products. It is a showcase of what is important to us both on and off the bike. Some of these products are backed by decades of proven performance and have become part of our WTB heritage, while new ones are being introduced to improve upon the constantly evolving riding experience. What started out as a need to refine the overbuilt cruisers that defined the early days of mountain biking has evolved into a commitment to innovation that encompasses every discipline of riding. While our heritage is rooted in mountain biking, recent years have brought the introduction of Road Plus, Adventure Road, and countless proven Gravel tires. Our belief in high-volume tires has brought about plus tires that expand upon where and how users enjoy the riding experience, whether on trails or roads. Available in numerous widths and padding thicknesses, our saddles have become the gold standard when it comes to finding the perfect fit. PadLoc grips innovated the most often overlooked connection between rider and bike by providing ultimate hand comfort. This year, we've revamped our mountain tire line with aggressive enduro and gravity tires to match the rowdy nature of mountain biking.

OUR PURPOSE:

To provide innovative and refined cycling products that enhance the riding experience for all users.

PAGE 6

INTRO

Product Icon Guide 06
TCS Technology 08

TCS 2.0 Technology 09
TCS & TCS 2.0 Compatibility 10

PAGE 14

TIRES

Tire Usage Chart 15
Tire Technology 16
Tire Construction 18

Urban | Hybrid Tires 22
Road Plus Tires 26
Adventure Road Tires 30

PAGE 58

SADDLES

Saddle Fit Chart 59
Saddle Fit System 60

Saddle Technology 62
Saddle Construction 64

PAGE 82

RIMS

Rim Comparison Chart 83

Rim Technology 84

PAGE 96

GRIPS

Padloc™ Technology 97
Padloc™ Grips 98

Clamp-on Grips 102

PAGE 108

ACCESSORIES

Tubeless Tape 109
Solid Strip 111
Valves 112

Tire & Rim Fit Chart **12**

Gravel | Cyclocross Tires **32**
Mountain Tires **38**

Test Ride Program **65**
Saddles **66**

Rims **86**

Slip-on Grips **104**

Tubes **113**
Mud Guards **114**



TIRE ICONS

RIM ICONS

INTRO

TIRES

SADDLES

RIMS

GRIPS

ACCS.



TCS

(Tubeless Compatible System)

NEW



TriTec Compound **TT**



TCS

(Tubeless Compatible System)

NEW



TCS 2.0

NEW



Flex Tape



Disc Only



Sleeved



Tough High Grip

NEW



Slash Guard **SG**



TCS Tape

NEW



Solid Strip



Sidewall Indicator



Pinned



Tough Fast Rolling



Flat Guard



ISO | ETRTO
Compliant

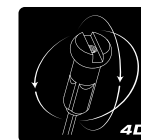
NEW



Drop Zone



ASYM



4D Drilling



Light High Grip



Road Plus



CID (Compatible
Integrated Design)

NEW



I-Beam



On Ramp



Tube Type



Light Fast Rolling



Tube Type Light



Double Wall



Unbendium Bulge

GRIP ICONS



Padloc®

INFORMATION DEFINED

Our icons indicate a variety of key information about our products. They include technical specs, quality levels, standards, and more. Look for these throughout this catalog and our products to identify the variations from one product to the next.



Photo: Sven Martin

INTRO

TIRES

SADDLES

RIMS

GRIPS

ACCS.

INTRO

TIRES

SADDLES

RIMS

GRIPS

ACCS.

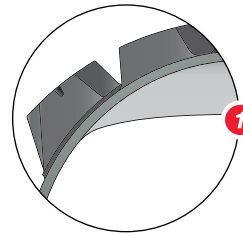


TCS

OVERVIEW

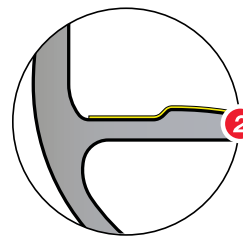
TCS (TUBELESS COMPATIBLE SYSTEM) DESCRIPTION

Designed to meet ETRTO standards, TCS (Tubeless Compatible System) tires feature the best of both worlds: they boast the ride benefits & reliability of a tubeless tire with the minimal weight of a tube type tire. This versatile system combines WTB's casing and tread compound of your choice, as well as a tubeless aramid bead.



SEALANT

Tubeless sealant allows for the use of a lightweight tire casing while providing superior flat protection.



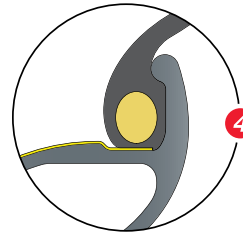
RIM TAPE

TCS Tape provides an air-tight seal that negates the need for a inner tube to hold air within the tire.
See Accessories - PG. 109



ON-RAMP

WTB's On-Ramp provides a consistent fit between rim and tire for easy installation and inflation.



BEADLOCK

Designed around ETRTO standards, Beadlock provides the optimal tubeless rim profile and diameter to ensure superior bead fit and retention.



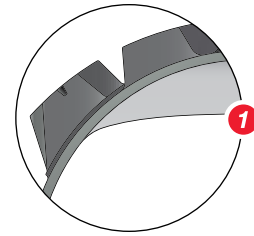
NEW

TCS 2.0

OVERVIEW

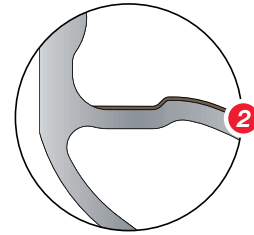
TCS 2.0 DESCRIPTION

TCS 2.0 introduces a more robust, easily installed, and dependable tubeless system. A recessed channel along the center of TCS 2.0 rims allows installation of the all-new Solid Strip, which prevents tubeless tape from sagging at the spoke holes and results in a smooth, consistent interface between the tire and rim. Installation of the stout Solid Strip allows for more pliable, and easy to install, Flex Tape to provide the airtight seal needed for a tubeless system.



SEALANT

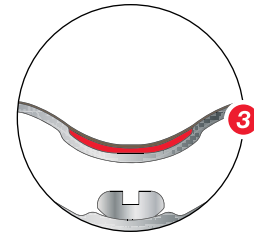
Tubeless sealant allows for the use of a lightweight tire casing while providing superior flat protection.



FLEX TAPE

Thin, pliable tape that is applied over the indestructible Solid Strip to provide an airtight seal between our tubeless tires and rims. Installation of Flex Tape is considerably easier than traditional tubeless tape.

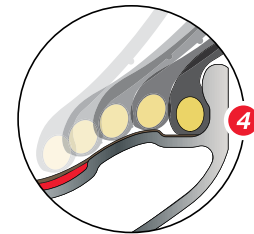
See Accessories - PG. 110



SOLID STRIP

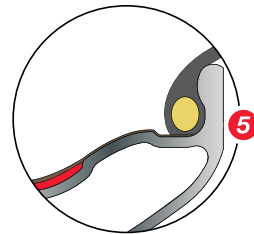
Narrow and durable rim strip that prevents tubeless tape from sagging at the spoke holes, which ensures a smooth interface between the tire and rim. This results in a more robust tubeless system that is easier to set up.

See Accessories - PG. 111



ON-RAMP

WTB's On-Ramp provides a consistent fit between rim and tire for easy installation and inflation.



BEADLOCK

Designed around ETRTO standards, Beadlock provides the optimal tubeless rim profile and diameter to ensure superior tire fit and retention.

INTRO

TIRES

SADDLES

RIMS

GRIPS

ACCS.

INTRO

TIRES

SADDLES

RIMS

GRIPS

ACCS.



TCS TIRES

ARE COMPATIBLE WITH:

- 1 TCS RIMS & ETRTO STANDARDIZED TUBELESS RIMS
- 2 TCS 2.0 RIMS
- 3 STANDARDIZED TUBE TYPE RIMS
(INNER TUBE REQUIRED)

NOTE

TCS tires cannot be used with non-standardized, oversized rims.

TCS & TCS 2.0 RIMS

ARE COMPATIBLE WITH:

- 1 TCS TIRES & OTHER STANDARDIZED TUBELESS TIRES
- 2 TUBE TYPE TIRES
(INNER TUBE REQUIRED)

NOTE

TCS rims cannot be used with non-standardized tires that have oversized bead diameters.



1 Tire Bead Diameter

TIRE BEAD DIAMETER

Internal diameter of the tire bead.

1



2 Tire Section Width

TIRE SECTION WIDTH

The measured width of the casing walls, excluding tread width.

2

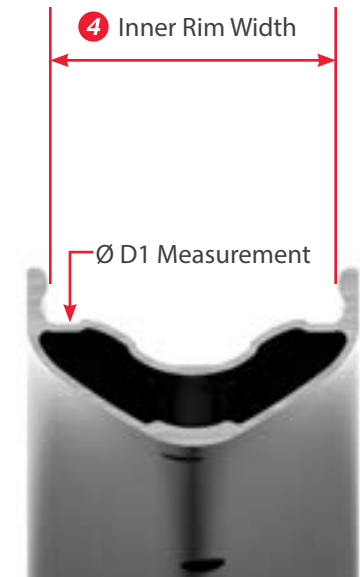


3 D1: Tire Bead Seat Diameter

D1

The diameter of the rim where the bead of the tire sits during use.

3



4 Inner Rim Width

INNER RIM WIDTH

The measured width between bead hooks.

4

INTRO

TIRES

SADDLES

RIMS

GRIPS

ACCS.

LEGEND



= OPTIMAL PERFORMANCE



= COMPATIBLE



= NOT OPTIMAL

URBAN | HYBRID | ROAD PLUS | ADVENTURE ROAD | GRAVEL | CYCLOCROSS

INNER RIM WIDTH

TIRE SECTION WIDTH (mm)

		NARROW i13-i17					MEDIUM i18-i24						WIDE i25-i30						NOT OPTIMAL i31-i50																				
		i13	i14	i15	i16	i17	i18	i19	i20	i21	i22	i23	i24	i25	i26	i27	i28	i29	i30	i31	i32	i33	i34	i35	i36	i37	i38	i39	i40	i41	i42	i43	i44	i45	i46	i47	i48	i49	i50
NARROW 23mm-28mm	23mm	●	●	■	■	■																																	
	25mm	●	●	■	■	■	■	●																															
	28mm		●	■	■	■	■	■	●	●																													
	30mm			●	●	●	●	■	■	■	■	■	■																										
	32mm			●	●	●	●	■	■	■	■	■	■																										
MEDIUM 30mm-37mm	35mm					●	●	■	■	■	■	■	■																										
	37mm					●	●	■	■	■	■	■	■																										
	40mm					●	●	■	■	■	■	■	■																										
WIDE 40mm-45mm	42mm					●	●	■	■	■	■	■	■																										
	44mm					●	●	■	■	■	■	■	■																										
	45mm					●	●	■	■	■	■	■	■																										
PLUS 47mm-50mm	47mm					●	●	■	■	■	■	■	■																										
	50mm					●	●	■	■	■	■	■	■																										

WARNING

The suggestions above extend beyond current ETRTO recommendations, but allow for more optimal performance. Proceed at your own risk.

LEGEND

 = OPTIMAL PERFORMANCE

 = COMPATIBLE

 = NOT OPTIMAL

MOUNTAIN

INNER RIM WIDTH

TIRE SECTION WIDTH (mm)

		NOT OPTIMAL i15-i18				NARROW i19-i22				MEDIUM i23-i27					WIDE i28-i35							PLUS i36-i51																			
		i15	i16	i17	i18	i19	i20	i21	i22	i23	i24	i25	i26	i27	i28	i29	i30	i31	i32	i33	i34	i35	i36	i37	i38	i39	i40	i41	i42	i43	i44	i45	i46	i47	i48	i49	i50	i51			
NARROW 1.8"-2.0"	47mm			●	●	■	■	■	■	■	■	■	●	●	●	●	●	●	●	●	●	●																			
	50mm			●	●	■	■	■	■	■	■	■	●	●	●	●	●	●	●	●	●	●	●																		
	52mm			●	●	■	■	■	■	■	■	■	●	●	●	●	●	●	●	●	●	●	●																		
	MEDIUM 2.1"-2.3"	54mm					●	■	■	■	■	■	■	●	●	●	●	●	●	●	●	●	●	●	●	●															
		55mm					●	●	●	●	●	●	■	■	■	■	■	■	■	■	■	■	■	■	■	■	●	●													
		57mm					●	●	●	●	●	●	■	■	■	■	■	■	■	■	■	■	■	■	■	■	●	●	●	●											
		58mm					●	●	●	●	●	●	■	■	■	■	■	■	■	■	■	■	■	■	■	■	●	●	●	●	●										
	WIDE 2.4"-2.6"	60mm					●	●	●	●	●	●	■	■	■	■	■	■	■	■	■	■	■	■	■	■	●	●	●	●	●										
		62mm					●	●	●	●	●	●	■	■	■	■	■	■	■	■	■	■	■	■	■	■	●	●	●	●	●	●									
		64mm								●	●	●	●	■	■	■	■	■	■	■	■	■	■	■	■	■	■	●	●	●	●	●	●								
		65mm								●	●	●	●	■	■	■	■	■	■	■	■	■	■	■	■	■	■	●	●	●	●	●	●								
	PLUS 2.8"-3.0"	67mm												●	●	●	●	●	●	●	●	●	●	●	●	●	●	●	●	●	●	●	●	●	●	●	●	●	●		
		70mm												●	●	●	●	●	●	●	●	●	●	●	●	●	●	●	●	●	●	●	●	●	●	●	●	●	●	●	
72mm													●	●	●	●	●	●	●	●	●	●	●	●	●	●	●	●	●	●	●	●	●	●	●	●	●	●	●		

 **WARNING**

The suggestions above extend beyond current ETRTO recommendations, but allow for more optimal performance. Proceed at your own risk.

TIRES

DECADES OF INNOVATION

A commitment to refining tire design has culminated into a completed range of tires that showcase innovation and performance. Regardless of usage, all our tires promote getting out there and doing so without mediocrity. Whether you're looking for meaty tires to tame loose trails at the bike park, high-volume road and gravel tires that expand where and how you ride your drop bar bike, or dependable urban rubber that you can rely on for a successful daily commute, we've got the perfect tire for you.



TIRE NAME	FIRM		MIXED TERRAIN		SOFT	
	PAVEMENT	HARDBACK	DIRT	GRAVEL	LOOSE	WET
URBAN HYBRID						
Thickslick						
Slick						
All Terrain						
ROAD PLUS						
Horizon 47						
Byway 47						
ADVENTURE ROAD						
Exposure 30						
Exposure 32						
Exposure 34						
GRAVEL CYCLOCROSS						
Resolute 42						
Nano 40						
Riddler 37 · 45						
Cross Boss 35						
Crosswolf 32						

TIRE NAME	FIRM		MIXED TERRAIN		SOFT	
	HARDBACK	LOOSE OVER HARD	DIRT	LOOSE ROCKY	WET	MUD
MTB						
Vigilante						
Trail Boss 2.25 · 3.0						
Trail Boss 2.4 · 2.6						
Judge						
Warden						
Convict						
Ranger						
Trailblazer						
Bridger						
Riddler						
Nano						
Nine Line						
VelociRaptor						

INTRO

TIRES

SADDLES

RIMS

GRIPS

ACCS.

TERMINOLOGY

TPI

TPI (threads per inch) refers to the thread count in a tire's casing. A lower TPI indicates that thicker threads are woven into the casing, therefore making it more durable; a higher TPI indicates that thinner threads are used, therefore making the casing lighter and more pliable. WTB's 60 TPI, TCS and Tube Type Light tires offer a supple casing with shock absorption qualities while remaining resistant to cuts and tears.

DUROMETER

The durometer of rubber refers to its hardness, which is rated according to its resistance to indentation. The lower the durometer rating, the softer the compound is. For example, a 42A compound will be softer than a 60A compound. Many TCS tubeless tires are made using multiple compounds with different durometer ratings.

SIPING

Sipes are small incisions on a tire's tread. Siping a knob creates more working edges, which boosts traction in virtually any condition. Because WTB's high-end mountain bike tires feature shallow sipes, the knobs stay firm under heavy loads and hard braking.

TIRE PRESSURE

The amount of air pumped into a tire affects its traction and ride characteristics. Too much pressure will result in a rough ride and lack of traction. Too little pressure will result in a squirmy ride and potentially unsafe bead retention that may not hold the tire on the rim while cornering. All WTB tires have recommended tire pressures indicated on the sidewall.

ARAMID BEAD

The area of the tire where it contacts the rim is called the bead. Tires with aramid beads utilize high-strength kevlar fibers that are spun into the bead to provide ultimate durability while also being lightweight and foldable. All TCS tires have aramid beads.

WIRE BEAD

The area of the tire where it contacts the rim is called the bead. Tires with wire beads utilize a thin, woven wire throughout the length of the bead to provide strength and proper tire retention. Tires with a wire bead cannot be folded. Entry-level tires are often made with a wire bead to provide them at an affordable price.

GMS (GLOBAL MEASURING SYSTEM)

Our Global Measuring System provides two measurements, the casing width and the overall width of the tread. Both are described in millimeters, with casing width written first.

SYSTEMS

TCS

Designed to meet ETRTO standards, TCS (Tubeless Compatible System) tires feature the best of both worlds: they boast the ride benefits & reliability of a tubeless tire with the minimal weight of a tube type tire. This versatile system combines WTB's casing and tread compound of your choice, as well as a tubeless aramid bead.

TCS 2.0 **NEW**

TCS 2.0 introduces a more robust, easily installed, and dependable tubeless system. A recessed channel along the center of TCS 2.0 rims allows installation of the all-new Solid Strip, which prevents tubeless tape from sagging at the spoke holes and results in a smooth, consistent interface between the tire and rim. Installation of the stout Solid Strip allows for more pliable, and easy to install, Flex Tape to provide the airtight seal needed for a tubeless system.

TIRE LEVELS

TCS TOUGH HIGH GRIP (THG)

Glue-like conforming rubber draped over two full layers of casing leaves no area unprotected. Developed through real testing during the Enduro World Series, TCS Tough tires can take some serious abuse.

TCS TOUGH FAST ROLLING (TFR)

Long-wearing rubber laid across two full layers of casing leaves no area unprotected. Developed through real testing during the Enduro World series, TCS Tough tires can take some serious abuse.

TCS LIGHT HIGH GRIP (LHG)

Glue-like conforming rubber wrapped onto a gram-conscious casing designed to be compliant while still trail worthy. Who says High Grip needs to be heavy?

TCS LIGHT FAST ROLLING (LFR)

A fast and efficient centerline tread compound matched to sticky, low durometer side knobs coat a supple, gram-conscious casing designed to be compliant while still trail worthy.

ROAD PLUS

Supple plus-size traction and smooth riding characteristics for beyond where the pavement ends. Added tubeless compliance with higher volume drowns out road noise, gravel vibrations, and dirt imperfections.

TUBE TYPE LIGHT

Once called Race, our Tube Type Light tires have a lightweight casing paired to a folding aramid bead. This casing type is ideal for the rider using inner tubes but demanding high-end performance from their tires. These tires utilize a bead shape that relies on tire retention through proper installation and inflation of a properly sized inner tube.

CASINGS

SLASH GUARD **SG** **NEW**

Slash Guard features a nylon insert spanning the entire sidewall, from the tire bead to the outer knob. The insert provides additional sidewall protection without adding unnecessary weight. Nylon is a highly durable material that resists slashes and gashes, making it ideal for defending the most exposed area of the tire. Slash Guard provides an intermediate level of protection for those wanting extra sidewall durability without the weight of a dual ply casing.

FLAT GUARD (FG)

The Flat Guard level of WTB tires features an Urban Armor Casing, which provides additional rubber throughout the entire casing and sidewall to deliver additional puncture protection while also ensuring it holds up to cornering on asphalt and even the occasional curb rub.

Additionally, Flat Guard tires utilize an extra layer of rubber beneath the whole width of the tread to provide even more thickness in the region where the tires are most likely to encounter sharp, intrusive objects.

COMP TIRES

Cost effective tires that feature grippy DNA rubber, durable impervious casings, and wire beads designed for use with a tube.

TCS LIGHT CASING

A supple, gram-conscious carcass designed to be compliant and conform to trail objects while still providing a happy balance of low rotational weight and rugged reliability.

TCS TOUGH CASING

Take our proven Lightweight Casing found in TCS Light tires and... well... double it. Yep, Tough Casing is composed of two full layers of casing, leaving no area unprotected on our TCS Tough tires. Developed through real world testing during the Enduro World Series, this casing is designed to take punishment and has been optimized for sealant usage, retention, and consistency.

TCS ROAD CASING

The pavement-going brother of our TCS Light casing. Tubeless simplicity paired with unbelievable road-feel in all the sizes you want.

URBAN ARMOR CASING

Urban Armor Casing provides additional rubber throughout the entire casing and sidewall to deliver additional puncture protection while also ensuring it holds up to cornering on asphalt and even the occasional curb rub.

DURABLE CASING

A robust and substantial casing provides the strength needed for our wire bead tires to last. A high ratio of rubber to thread protects against trail threats and urban unpleasantries. Found in all Comp level tires.

RACE CASING

Now called Tube Type Light, it is a lightweight casing paired to a folding aramid bead. This casing type is ideal for the rider using inner tubes but demanding high-end performance from their tires.

COMPOUNDS

TRITEC COMPOUND **TT** **NEW**

Three compounds provide optimal levels of traction, support and durability. A base of high durometer rubber supports the entire tread and transitions into the knobs to prevent folding or squirming. Medium stiffness center knobs cap the base layer to provide traction and durability without sacrificing rolling efficiency, while soft compound side knobs deliver maximum grip and slow rebound for increased cornering traction.

DUAL DNA RUBBER COMPOUND

Dual DNA is the perfect mix of efficiency, traction and durability. The centerline tread features a firmer rubber compound that boasts faster rolling and increased durability, while the side knobs are composed of softer, slower-rebounding rubber that improves control and grip.

DNA RUBBER COMPOUND

Our proprietary 60A durometer rubber compound offers the ideal mix of rolling efficiency and traction for Cross-Country and trail riding applications. DNA rubber is renowned for being versatile and long lasting.

GRAVITY DNA RUBBER COMPOUND

The 48A durometer, glue-like conforming rubber creates uncanny traction with tuned rebound characteristics designed to take harsh hits yet not fumble for footing.

DISTANCE RUBBER COMPOUND

Found in WTB's pavement tires, this compound is specifically formulated to maximize the lifespan of tires. Sick of wearing out tires yet don't care to ride on a pair of Crayons? Try our Distance Compound for a harmonious pairing of longevity and traction.

LEGEND

 = SOFT COMPOUND

 = MEDIUM COMPOUND

 = HARD COMPOUND



TCS **TOUGH**
HIGH GRIP

TIRE CONSTRUCTION

FEATURES:

- | | |
|-----------------------------|--------------------------|
| 1 TCS | 4 2-PLY CASING |
| 2 SIPING | 5 60 TPI CASING |
| 3 GRAVITY DNA RUBBER | 6 TCS ARAMID BEAD |

TOUGH HIGH GROUP DESCRIPTION

Glue-like conforming rubber draped over two full layers of casing leaves no area unprotected. Developed through real testing during the Enduro World Series, TCS Tough tires can take some serious abuse.



TCS **TOUGH**
FAST ROLLING

TIRE CONSTRUCTION

FEATURES:

- | | |
|--------------------------|--------------------------|
| 1 TCS | 4 2-PLY CASING |
| 2 SIPING | 5 60 TPI CASING |
| 3 DUAL DNA RUBBER | 6 TCS ARAMID BEAD |

TOUGH FAST ROLLING DESCRIPTION

Dual durometer, long-wearing rubber laid across two full layers of casing leaves no area unprotected. Developed through real testing during the Enduro World series, TCS Tough tires can take some serious abuse.

INTRO
TIRES
SADDLES
RIMS
GRIPS
ACCS.



TCS LIGHT HIGH GRIP

TIRE CONSTRUCTION

FEATURES:

- | | |
|-----------------------------|--------------------------|
| 1 TCS | 4 LIGHT CASING |
| 2 SINGLE-PLY CASING | 5 60 TPI CASING |
| 3 GRAVITY DNA RUBBER | 6 TCS ARAMID BEAD |

LIGHT HIGH GRIP DESCRIPTION

Glue-like conforming rubber wrapped onto a gram-conscious casing designed to be compliant while still trail worthy. Who says High Grip needs to be heavy?



TCS LIGHT FAST ROLLING

TIRE CONSTRUCTION

FEATURES:

- | | |
|----------------------------|--------------------------|
| 1 TCS | 4 LIGHT CASING |
| 2 SINGLE-PLY CASING | 5 60 TPI CASING |
| 3 DUAL DNA RUBBER | 6 TCS ARAMID BEAD |

LIGHT FAST ROLLING DESCRIPTION

A fast and efficient centerline tread compound matched to sticky, low durometer side knobs coat a supple, gram-conscious casing designed to be compliant while still trail worthy.

INTRO

TIRES

SADDLES

RIMS

GRIPS

ACCS.

LEGEND



= EXTRA SOFT COMPOUND



= SOFT COMPOUND



= MEDIUM COMPOUND



= HARD COMPOUND



NEW



TOUGH
HIGH GRIP



TIRE CONSTRUCTION

FEATURES:

- 1 TCS
- 2 SIPING
- 3 TRITEC COMPOUND **TT**
- 4 2-PLY CASING
- 5 60 TPI CASING
- 6 TCS ARAMID BEAD

TOUGH HIGH GRIP | TRITEC DESCRIPTION

Tough High Grip tires provide aggressive riders with utmost puncture protection and unwavering traction in wet or loose conditions. TriTec Compound reduces drag, prevents knob flex and improves traction through specific placement of three rubber compounds with different firmness characteristics.



NEW



TOUGH
FAST ROLLING



TIRE CONSTRUCTION

FEATURES:

- 1 TCS
- 2 SIPING
- 3 TRITEC COMPOUND **TT**
- 4 2-PLY CASING
- 5 60 TPI CASING
- 6 TCS ARAMID BEAD

TOUGH FAST ROLLING | TRITEC DESCRIPTION

Tough Fast Rolling tires provide aggressive riders with utmost puncture protection and maximum rolling efficiency on dry or hardpack trails. TriTec Compound reduces drag, prevents knob flex and improves traction through specific placement of three rubber compounds with different firmness characteristics.

INTRO
 TIRES
 SADDLES
 RIMS
 GRIPS
 ACCS.

LEGEND

- = EXTRA SOFT COMPOUND
- = SOFT COMPOUND
- = MEDIUM COMPOUND
- = HARD COMPOUND



NEW



TIRE CONSTRUCTION

FEATURES:

- | | |
|--|---|
| <ul style="list-style-type: none"> 1 TCS 2 SIPING 3 TRITEC COMPOUND TT | <ul style="list-style-type: none"> 4 LIGHT CASING 5 SLASH GUARD SG 6 60 TPI CASING 7 TCS ARAMID BEAD |
|--|---|

LIGHT HIGH GRIP | TRITEC | SLASH GUARD DESCRIPTION

Light High Grip tires provide gram-conscious riders with Slash Guard sidewall protection and unwavering traction in wet or loose conditions. TriTec Compound reduces drag, prevents knob flex and improves traction through specific placement of three rubber compounds with different firmness characteristics.



NEW



TIRE CONSTRUCTION

FEATURES:

- | | |
|--|---|
| <ul style="list-style-type: none"> 1 TCS 2 SIPING 3 TRITEC COMPOUND TT | <ul style="list-style-type: none"> 4 LIGHT CASING 5 SLASH GUARD SG 6 60 TPI CASING 7 TCS ARAMID BEAD |
|--|---|

LIGHT FAST ROLLING | TRITEC | SLASH GUARD DESCRIPTION

Light Fast Rolling tires provide gram-conscious riders with Slash Guard sidewall protection and maximum rolling efficiency on dry or hardpack trails. TriTec Compound reduces drag, prevents knob flex and improves traction through specific placement of three rubber compounds with different firmness characteristics.

TIRES

URBAN | HYBRID



#RIDEWTB



THICKSLICK

26"

27.5"

29"

700c

USAGES: *Urban*

CONDITIONS: *Pavement*

TIRE DESCRIPTION

It's all in the name, ThickSlick. A burly casing designed to withstand the roughest urban conditions paired with a slick tread design that provides the bite you need in the concrete jungle. ThickSlick holds it down with impeccable style.



Photo: Mark Skovorodko

SIZE	WIDTH	LEVEL	WEIGHT	CASING	COMPOUND	BEAD	TIRE SIZE DESIGNATION	OPTIMAL INNER RIM WIDTH	GMS	PART #
26"										
26"	2.0	Comp	620g	Durable	2X Puncture Resistance	Wire	50 - 559	i19 - i25	N/A	W010-0658
27.5"										
27.5"	1.95	Comp	710g	Durable	2X Puncture Resistance	Wire	50-584	i19 - i25	N/A	W010-0607
29"										
29"	2.1	Comp	698g	Durable	2X Puncture Resistance	Wire	52-622	i19 - i25	N/A	W010-0613
29"	2.1	Flat Guard	786g	Urban Armor	DNA	Wire	52-622	i19 - i25	N/A	W010-0623
700c										
700c	23c	Comp	372g	Durable	2X Puncture Resistance	Wire	25 - 622	i15 - i17	N/A	W010-0609
700c	25c	Comp	260g	Durable	2X Puncture Resistance	Wire	25 - 622	i15 - i17	N/A	W010-0610
700c	25c	Comp (White Tire)	260g	Durable	2X Puncture Resistance	Wire	25 - 622	i15 - i17	N/A	W010-0645
700c	25c	Flat Guard	487g	Urban Armor	DNA	Wire	25 - 622	i15 - i17	N/A	W010-0616
700c	28c	Comp	467g	Durable	2X Puncture Resistance	Wire	28 - 622	i15 - i17	N/A	W010-0611
700c	28c	Flat Guard	490g	Urban Armor	DNA	Wire	28 - 622	i15 - i17	N/A	W010-0617

INTRO

TIRES

SADDLES

RIMS

GRIPS

ACCS.



SLICK

29"

USAGES: *Urban*

CONDITIONS: *Pavement*

TIRE DESCRIPTION

The Slick is the tire for those year-round, all-weather commuters. Simple, dependable, this tire gets the job done.



Photo: Alen Palander

SIZE	WIDTH	LEVEL	WEIGHT	CASING	COMPOUND	BEAD	TIRE SIZE DESIGNATION	OPTIMAL INNER RIM WIDTH	GMS	PART #
29"										
29"	2.2	Comp	979g	Durable	Distance	Wire	54-622	i20 - i25	54/50	W010-0491



ALL TERRAIN

26"

700c

USAGES: *Urban*

CONDITIONS: *Pavement • Hardpack*

TIRE DESCRIPTION

The All Terrain is always up for adventure. From long-distance touring to light-duty offroading, this tire offers impeccable handling that won't let you down.

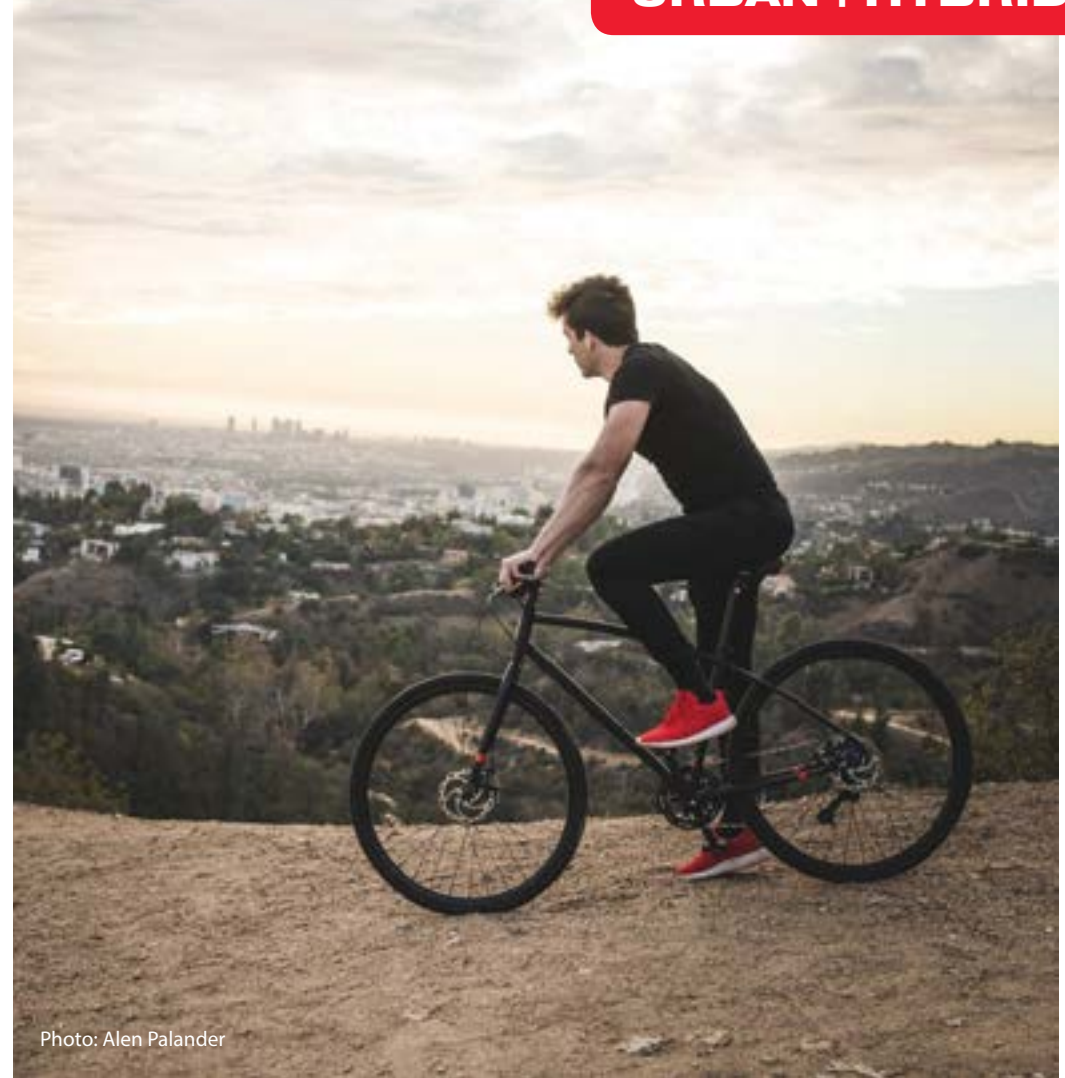


Photo: Alen Palander

SIZE	WIDTH	LEVEL	WEIGHT	CASING	COMPOUND	BEAD	TIRE SIZE DESIGNATION	OPTIMAL INNER RIM WIDTH	GMS	PART #
26"										
26"	1.95	Comp	635g	Durable	DNA	Wire	47-559	i19 - i25	47/47	W010-0359
700c										
700c	32c	Comp	455g	Durable	DNA	Wire	32-622	i19 - i24	32/32	W010-0397
700c	37c	Comp	540g	Durable	DNA	Wire	37-622	i19 - i24	37/37	W010-0396

TIRES

ROAD PLUS



ROAD PLUS



#RIDEWTB

INTRO

TIRES

SADDLES

RIMS

GRIPS

ACCS.



HORIZON 47

650b

USAGES: *Adventure Road*

CONDITIONS: *Pavement*

TIRE DESCRIPTION

The Horizon Road Plus tire brings supple, plus-size traction and smooth riding characteristics beyond where the pavement ends. Create a new riding experience, regardless of where your exploits lead you.



Photo: Abner Kingman

SIZE	WIDTH	LEVEL	WEIGHT	CASING	COMPOUND	BEAD	TIRE SIZE DESIGNATION	OPTIMAL INNER RIM WIDTH	GMS	PART #
650b										
650b	47c	Road TCS	515g	Road	Dual DNA	Aramid	47 - 584	119 - 125	47/46	W010-0640



BYWAY 47

650b

USAGES: *Adventure Road • Gravel*

CONDITIONS: *Pavement • Hardpack • Dirt • Gravel*

TIRE DESCRIPTION

Our most dirt-focused Road Plus tire yet, the Byway Road Plus tire delivers supple plus-size traction and smooth riding characteristics farther into the dirt. The Byway Road Plus tire allows riders to find comfort on remote gravel roads without feeling slow on the pavement required to reach them.



SIZE	WIDTH	LEVEL	WEIGHT	CASING	COMPOUND	BEAD	TIRE SIZE DESIGNATION	OPTIMAL INNER RIM WIDTH	GMS	PART #
650b										
650b	47c	Road TCS	535g	Light	Dual DNA	Aramid	47 - 584	i19 - i25	47/46	W010-0677

TIRES

ADVENTURE ROAD



#RIDEWTB



INTRO

TIRES

SADDLES

RIMS

GRIPS

ACCS.

EXPOSURE

700c

USAGES: *Adventure Road*

30 CONDITIONS: *Pavement*

32 CONDITIONS: *Pavement • Hardpack*

34 CONDITIONS: *Pavement • Hardpack • Dirt*

TIRE DESCRIPTION

Elite-level road meets renowned tubeless simplicity in sizes that accommodate exploration while digging deep on lonesome roads. Exposure tires mean big days and few boundaries.

SIZE	WIDTH	LEVEL	WEIGHT	CASING	COMPOUND	BEAD	TIRE SIZE DESIGNATION	OPTIMAL INNER RIM WIDTH	GMS	PART #	
700c x 30											
700c	30c	Road TCS	310g	Road	Distance+	Aramid	30-622	i19 - i24	30/30	W010-0639	
NEW	700c	30c	Road TCS Tanwall	310g	Road	Distance+	Aramid	30-622	i19 - i24	30/30	W010-0693
700c x 32											
700c	32c	Road TCS	315g	Road	Distance+	Aramid	32-622	i19 - i24	32/32	W010-0676	
NEW	700c	32c	Road TCS Tanwall	315g	Road	Distance+	Aramid	32-622	i19 - i24	32/32	W010-0697
700c x 34											
700c	34c	Road TCS	370g	Road	Distance+	Aramid	34-622	i19 - i24	35/33	W010-0643	
NEW	700c	34c	Road TCS Tanwall	370g	Road	Distance+	Aramid	34-622	i19 - i24	35/33	W010-0696

TIRES

GRAVEL | CYCLOCROSS



#RIDEWTB



RESOLUTE 42

650b

700c

USAGES: *Gravel • Cyclocross • Bikepacking*

CONDITIONS: *Hardpack • Dirt • Gravel • Loose • Wet*

TIRE DESCRIPTION

Resolute 42 is the ultimate all-weather gravel tire for those who believe there is a perfect tread pattern for every ride. Small, square knobs deliver consistent bite into a variety of terrain, while the ample spaces between them prevent packing up when conditions become fun (a.k.a wet). Truly all-season in nature, its 42mm width makes it a set-it-and-forget-it gravel tire for endlessly undulating roads through all varieties of weather.



SIZE	WIDTH	LEVEL	WEIGHT	CASING	COMPOUND	BEAD	TIRE SIZE DESIGNATION	OPTIMAL INNER RIM WIDTH	GMS	PART #
650b										
650b	42c	TCS Light FR	440g	Light	Dual DNA	Aramid	42-584	i19 - i25	42/40	W010-0682
700c										
700c	42c	TCS Light FR	460g	Light	Dual DNA	Aramid	42-622	i19 - i25	42/40	W010-0681

INTRO

TIRES

SADDLES

RIMS

GRIPS

ACCS.



NEW
TANWALL

NANO 40

700c

USAGES: *Gravel • Cyclocross*

CONDITIONS: *Hardpack • Dirt • Gravel*

TIRE DESCRIPTION

FAAAASSSTT!!!!!! The Nano 40c is built for speed. An all out gravel destroyer that can still appease those clamoring for a truly BIG cyclocross tire. Everybody's irrefutable favorite, 'nough said.



SIZE	WIDTH	LEVEL	WEIGHT	CASING	COMPOUND	BEAD	TIRE SIZE DESIGNATION	OPTIMAL INNER RIM WIDTH	GMS	PART #	
700c											
700c	40c	Comp	550g	Durable	DNA	Wire	40-622	i19 - i24	40/36	W010-0523	
700c	40c	Race	470g	Light	DNA	Aramid	40-622	i19 - i24	40/36	W010-0524	
700c	40c	TCS Light FR	530g	Light	Dual DNA	Aramid	40-622	i19 - i24	40/36	W010-0578	
NEW	700c	40c	TCS Light FR Tanwall	530g	Light	Dual DNA	Aramid	40-622	i19 - i24	40/36	W010-0692



NEW

TANWALL

RIDDLER 37 · 45

700c

USAGES: *Gravel • Cyclocross • Bikepacking*

CONDITIONS: *Pavement • Hardpack • Dirt • Gravel*

TIRE DESCRIPTION

You need a tire that keeps your legs on their game for hours on end, while remaining composed through corners. Riddler 700c is the result of aggressive cornering knobs meeting a fast centerline, making for a tire that carries speed into the straightaways yet corners like it means it. Roadesque enough in appearance, the Riddler 37 is just as ready for the local cross course as it is spinning down an empty gravel B-road while the Riddler 45 delivers added gusto to the rider who finds themselves on the roughest of roads.



SIZE	WIDTH	LEVEL	WEIGHT	CASING	COMPOUND	BEAD	TIRE SIZE DESIGNATION	OPTIMAL INNER RIM WIDTH	GMS	PART #
700c x 37										
700c	37c	TCS Light FR	465g	Light	Dual DNA	Aramid	37-622	i19 - i24	37/37	W010-0641
NEW	700c	TCS Light FR Tanwall	465g	Light	Dual DNA	Aramid	37-622	i19 - i24	37/37	W010-0694
700c x 45										
700c	45c	TCS Light FR	560g	Light	Dual DNA	Aramid	44-622	i19 - i25	44/44	W010-0642
NEW	700c	TCS Light FR Tanwall	560g	Light	Dual DNA	Aramid	44-622	i19 - i25	44/44	W010-0695

INTRO

TIRES

SADDLES

RIMS

GRIPS

ACCS.



NEW
TANWALL

CROSS BOSS 35

700c

USAGES: *Gravel • Cyclocross*

CONDITIONS: *Hardpack • Dirt • Gravel*

TIRE DESCRIPTION

Volume, speed, and consistency that keeps riders grinning for more turns. From singletrack to the CX circuit, the Cross Boss is here to bring it.



SIZE	WIDTH	LEVEL	WEIGHT	CASING	COMPOUND	BEAD	TIRE SIZE DESIGNATION	OPTIMAL INNER RIM WIDTH	GMS	PART #
700c										
700c	35c	TCS Light FR	400g	Light	Dual DNA	Aramid	35 - 622	i19 - i24	35/30	W010-0564
700c	35c	TCS Light FR Tanwall	400g	Light	Dual DNA	Aramid	35 - 622	i19 - i24	35/30	W010-0675



CROSSWOLF 32

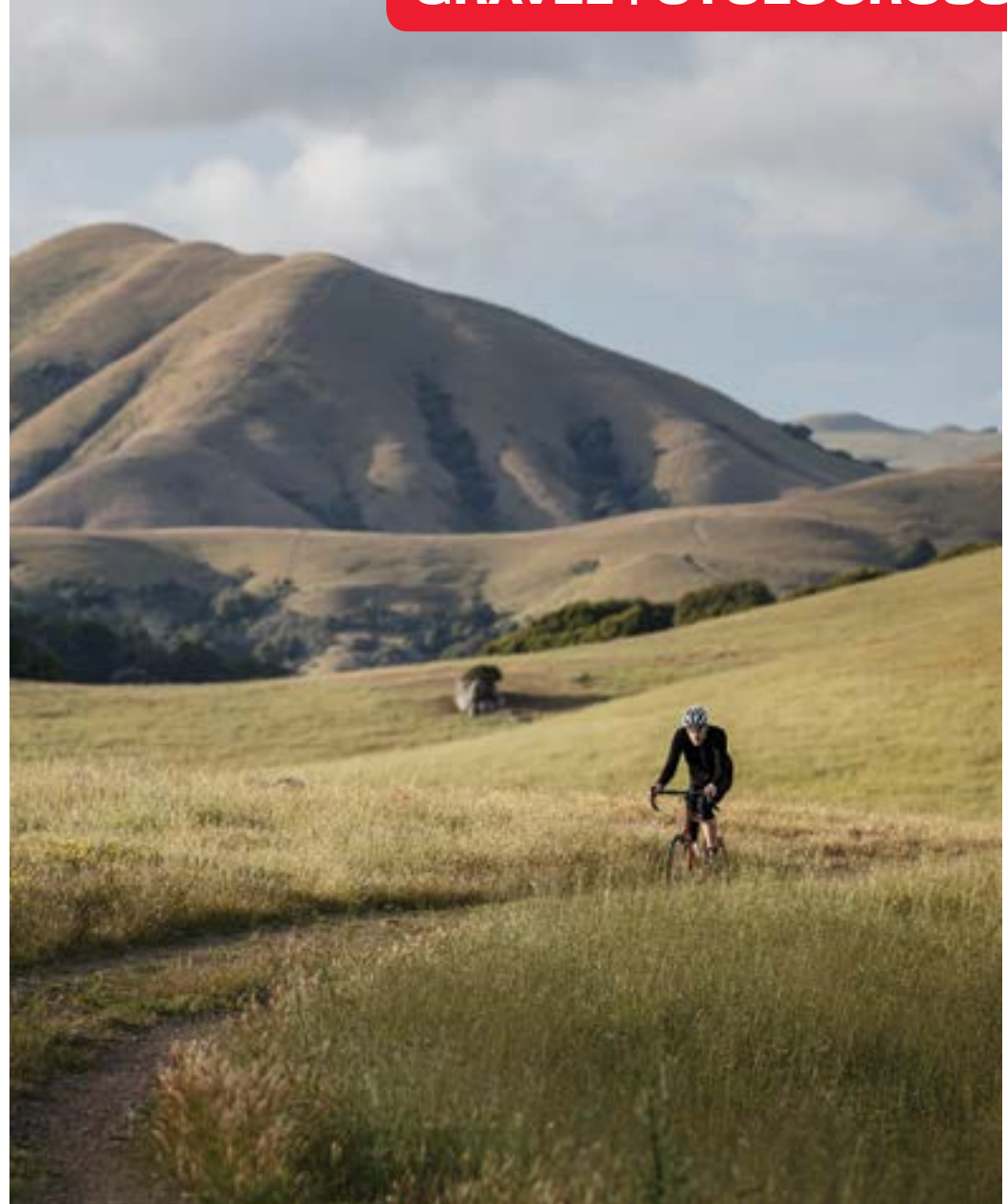
700c

USAGES: *Cyclocross*

CONDITIONS: *Gravel • Loose • Wet*

TIRE DESCRIPTION

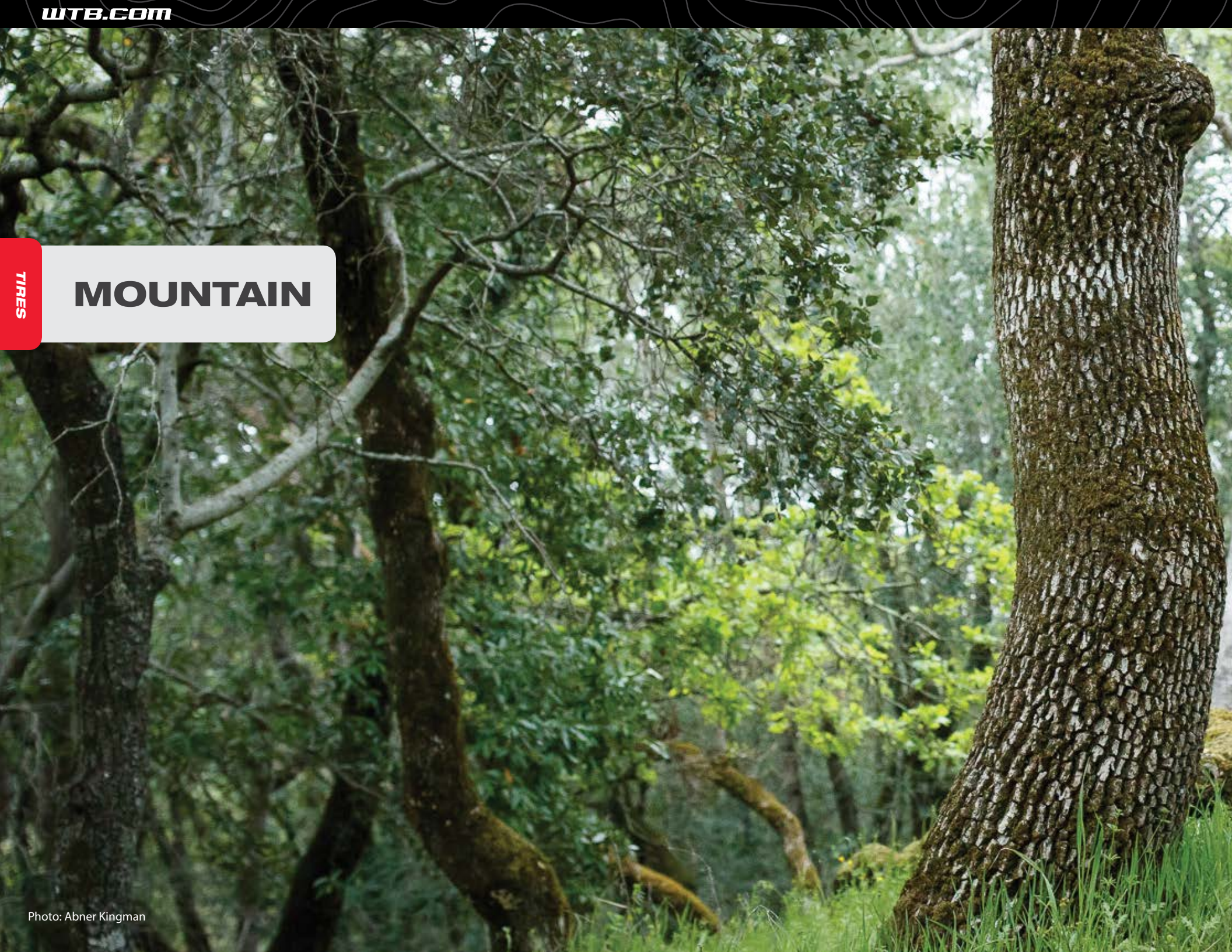
The Cross Wolf tackles the race course and singletrack with speed and an aggressive bite. It boasts impressive traction and stability for its minimal weight and size.



SIZE	WIDTH	LEVEL	WEIGHT	CASING	COMPOUND	BEAD	TIRE SIZE DESIGNATION	OPTIMAL INNER RIM WIDTH	GMS	PART #
700c										
700c	32c	TCS Light FR	392g	Light	Dual DNA	Aramid	32 - 622	i19 - i24	32/32	W010-0535

TIRES

MOUNTAIN



MOUNTAIN



#RIDEWTB



INTRO

TIRES

SADDLES

RIMS

GRIPS

ACCS.



2.3

NEW
2.5

NEW
2.6

VIGILANTE

26"

27.5"

29"

USAGES: *Trail • Enduro*

CONDITIONS: *Dirt • Loose • Rocky • Wet*

TIRE DESCRIPTION

Aggressive, premier, and unwavering...those were all words we used to describe the original, highly esteemed Vigilante 2.3 and they still ring true for the all-new Vigilante 2.5 and 2.6 widths as well. Square-lugged knobs still deliver unwavering traction, yet with added height to ensure they dig even deeper into loose, unpredictable terrain. Increased circumferential spacing allows the tread to remain clear through wet conditions, while still keeping the casing protected from spiteful rocks.





SIZE	WIDTH	LEVEL	WEIGHT	CASING	COMPOUND	BEAD	TIRE SIZE DESIGNATION	OPTIMAL INNER RIM WIDTH	GMS	PART #	
26"											
26"	2.3	Comp	925g	Durable	DNA	Wire	57-559	i25 - i35	57/59	W010-0536	
26"	2.3	TCS Light FR	786g	Light	Dual DNA	Aramid	57 - 559	i25 - i35	57/59	W010-0537	
27.5"											
27.5"	2.3	TCS Light FR	900g	Light	Dual DNA	Aramid	57 - 584	i25 - i35	57/59	W010-0540	
27.5"	2.3	TCS Light HG	900g	Light	Gravity DNA	Aramid	57 - 584	i25 - i35	57/59	W010-0598	
27.5"	2.3	TCS Tough FR	1056g	Tough	Dual DNA	Aramid	57 - 584	i25 - i35	57/59	W010-0541	
27.5"	2.3	TCS Tough HG	1140g	Tough	Gravity DNA	Aramid	57 - 584	i25 - i35	57/59	W010-0542	
NEW	27.5"	2.5	TCS Light HG + TT + SG	TBD	Light	TriTec	Aramid	60 - 584	i25 - i35	60/64	W010-0706
NEW	27.5"	2.5	TCS Tough FR + TT	TBD	Tough	TriTec	Aramid	60 - 584	i25 - i35	60/64	W010-0705
NEW	27.5"	2.5	TCS Tough HG + TT	TBD	Tough	TriTec	Aramid	60 - 584	i25 - i35	60/64	W010-0704
NEW	27.5"	2.6	TCS Light HG + TT + SG	TBD	Light	TriTec	Aramid	64 - 584	i35 - i45	65/68	W010-0685
NEW	27.5"	2.6	TCS Tough FR + TT	TBD	Tough	TriTec	Aramid	64 - 584	i35 - i45	65/68	W010-0684
NEW	27.5"	2.6	TCS Tough HG + TT	TBD	Tough	TriTec	Aramid	64 - 584	i35 - i45	65/68	W010-0683
29"											
29"	2.3	TCS Light FR	900g	Light	Dual DNA	Aramid	57 - 622	i25 - i35	57/59	W010-0544	
29"	2.3	TCS Light HG	947g	Light	Gravity DNA	Aramid	57 - 622	i25 - i35	57/59	W010-0679	
29"	2.3	TCS Tough FR	1151g	Tough	Dual DNA	Aramid	57 - 622	i25 - i35	57/59	W010-0545	
29"	2.3	TCS Tough HG	1141g	Tough	Gravity DNA	Aramid	57 - 622	i25 - i35	57/59	W010-0680	
NEW	29"	2.5	TCS Light HG + TT + SG	TBD	Light	TriTec	Aramid	60 - 622	i25 - i35	60/64	W010-0710
NEW	29"	2.5	TCS Tough FR + TT	TBD	Tough	TriTec	Aramid	60 - 622	i25 - i35	60/64	W010-0709
NEW	29"	2.5	TCS Tough HG + TT	TBD	Tough	TriTec	Aramid	60 - 622	i25 - i35	60/64	W010-0708
NEW	29"	2.6	TCS Light HG + TT + SG	TBD	Light	TriTec	Aramid	64 - 622	i35 - i45	65/68	W010-0714
NEW	29"	2.6	TCS Tough FR + TT	TBD	Tough	TriTec	Aramid	64 - 622	i35 - i45	65/68	W010-0713
NEW	29"	2.6	TCS Tough HG + TT	TBD	Tough	TriTec	Aramid	64 - 622	i35 - i45	65/68	W010-0712

INTRO

TIRES

SADDLES

RIMS

GRIPS

ACCS.



INTRO

TIRES

SADDLES

RIMS

GRIPS

ACCS.



2.25

NEW
2.4

NEW
2.6

3.0

TRAIL BOSS

26"

27.5"

29"

USAGES: *Trail • Enduro*

2.25 • 3.0 CONDITIONS: *Hardpack • Loose Over Hard • Dirt • Loose • Rocky • Wet*

2.4 • 2.6 CONDITIONS: *Loose Over Hard • Dirt • Loose • Rocky • Wet*

TIRE DESCRIPTION

It's a tall order to improve the tried-and-true Trail Boss tire, but we promise that's exactly what we've done. The new Trail Boss builds on perfection with a more aggressive tread pattern to match its increased volume. Generous spacing between sizable knobs provides better traction in loose or wet conditions, while staying true to its fleet-footed heritage. Large, supportive side knobs dig deeeeeep, whether you're leaning into a corner or grabbing a handful of brake. Most often used as a rear tire, the Trail Boss G2 also provides plentiful traction on hardpack trails when used on the front.



Photo: Caleb Smith



Photo: Caleb Smith

SIZE	WIDTH	LEVEL	WEIGHT	CASING	COMPOUND	BEAD	TIRE SIZE DESIGNATION	OPTIMAL INNER RIM WIDTH	GMS	PART #	
26"											
26"	2.25	Comp	670g	Durable	DNA	Wire	54 - 559	i20 - i25	54/57	W010-0595	
26"	2.25	TCS Light FR	760g	Light	Dual DNA	Aramid	54-559	i20 - i25	52/56	W010-0593	
26"	2.25	TCS Tough FR	900g	Tough	Dual DNA	Aramid	54-559	i20 - i25	54/57	W010-0594	
27.5"											
27.5"	2.25	Comp	840g	Durable	DNA	Wire	54 - 584	i20 - i25	54/57	W010-0551	
27.5"	2.25	TCS Tough FR	870g	Tough	Dual DNA	Aramid	54 - 584	i20 - i25	54/57	W010-0553	
NEW	27.5"	2.4	TCS Light FR +TT + SG	TBD	Light	TriTec	Aramid	55 - 584	i25 - i35	59/61	W010-0723
NEW	27.5"	2.4	TCS Tough FR +TT	TBD	Tough	TriTec	Aramid	55 - 584	i25 - i35	59/61	W010-0721
NEW	27.5"	2.6	TCS Light FR +TT + SG	TBD	Light	TriTec	Aramid	65 - 584	i35 - i45	62/66	W010-0689
NEW	27.5"	2.6	TCS Tough FR +TT	TBD	Tough	TriTec	Aramid	65 - 584	i35 - i45	62/66	W010-0687
27.5"	3.0	TCS Light FR	1125g	Light	Dual DNA	Aramid	72 - 584	i35 - i45	75/75	W010-0605	
29"											
29"	2.25	Comp	938g	Durable	DNA	Wire	54 - 622	i20 - i25	54/57	W010-0522	
29"	2.25	TCS Light FR	795g	Light	Dual DNA	Aramid	54 - 622	i20 - i25	54/57	W010-0519	
29"	2.25	TCS Tough FR	920g	Tough	Dual DNA	Aramid	54 - 622	i20 - i25	54/57	W010-0518	
NEW	29"	2.4	TCS Light FR +TT + SG	TBD	Light	TriTec	Aramid	55 - 622	i25 - i35	59/61	W010-0727
NEW	29"	2.4	TCS Tough FR +TT	TBD	Tough	TriTec	Aramid	55 - 622	i25 - i35	59/61	W010-0725
NEW	29"	2.6	TCS Light FR +TT + SG	TBD	Light	TriTec	Aramid	65 - 622	i35 - i45	62/66	W010-0731
NEW	29"	2.6	TCS Tough FR +TT	TBD	Tough	TriTec	Aramid	65 - 622	i35 - i45	62/66	W010-0729

INTRO

TIRES

SADDLES

RIMS

GRIPS

ACCS.

INTRO

TIRES

SADDLES

RIMS

GRIPS

ACCS.



NEW

JUDGE 2.4

27.5"

29"

USAGES: *Enduro • Gravity*

CONDITIONS: *Dirt • Loose • Rocky • Wet*

TIRE DESCRIPTION

The Judge is our rowdiest rear-focused tire...for loose, sketchy descents. Centerline knob groups alternate between long and wide to pair hard braking traction with the rolling efficiency you demand of a rear tire. Burly outer knobs provide support to keep them digging while slapping berms or spraying loam. We optimized the Judge for wide rims to provide a flatter tire profile that makes the outer knobs easy to find while cornering. The Judge keeps everything in order, whether dry and loose or wet and sloppy.



SIZE	WIDTH	LEVEL	WEIGHT	CASING	COMPOUND	BEAD	TIRE SIZE DESIGNATION	OPTIMAL INNER RIM WIDTH	GMS	PART #	
27.5"											
NEW	27.5"	2.4	TCS Tough FR +TT	TBD	Tough	TriTec	Aramid	55 - 584	i25 - i35	55/60	W010-0752
NEW	27.5"	2.4	TCS Tough HG +TT	TBD	Tough	TriTec	Aramid	55 - 584	i25 - i35	55/60	W010-0751
29"											
NEW	29"	2.4	TCS Tough FR +TT	TBD	Tough	TriTec	Aramid	55 - 622	i25 - i35	55/60	W010-0756
NEW	29"	2.4	TCS Tough HG +TT	TBD	Tough	TriTec	Aramid	55 - 622	i25 - i35	55/60	W010-0755



INTRO

TIRES

SADDLES

RIMS

GRIPS

ACCS.



WARDEN 2.3

27.5"

USAGES: *Trail • Enduro • Gravity*

CONDITIONS: *Loose • Rocky • Wet • Mud*

TIRE DESCRIPTION

When your riding buddies cover and shutter at the sight of rain, the Warden dominates defiantly in a world of slop. Siped and chipped mud spikes rear their unrelenting heads out of a robust Enduro casing built for punishment. Pyramid architecture and a wide-open block footprint of reinforced knobs ensure mud evacuation. This is what wins when you can't see through the windshield.



SIZE	WIDTH	LEVEL	WEIGHT	CASING	COMPOUND	BEAD	TIRE SIZE DESIGNATION	OPTIMAL INNER RIM WIDTH	GMS	PART #
27.5"										
27.5"	2.3	TCS Tough HG	1155g	Tough	Gravity DNA	Aramid	54 - 584	20 - 25	54/52	W010-0547



CONVICT 2.5

27.5"

USAGES: Trail • Enduro • Gravity

CONDITIONS: Dirt • Loose • Rocky

TIRE DESCRIPTION

The Convict epitomizes the toothy tread and robust features of a truly aggressive gravity tire. Guilty of first-degree loam assault. Sentenced to a life of devouring the gnarliest descents.



SIZE	WIDTH	LEVEL	WEIGHT	CASING	COMPOUND	BEAD	TIRE SIZE DESIGNATION	OPTIMAL INNER RIM WIDTH	GMS	PART #
27.5"										
27.5"	2.5	TCS Light HG	1042g	Light	Gravity DNA	Aramid	60 - 584	i25 - i35	60/66	W010-0631
27.5"	2.5	TCS Tough HG	1239g	Tough	Gravity DNA	Aramid	60 - 584	i25 - i35	60/66	W010-0632



INTRO

TIRES

SADDLES

RIMS

GRIPS

ACCS.



2.25

NEW

2.4

2.8

3.0

RANGER

26"

27.5"

29"

USAGES: *Cross-Country • Trail • Bikepacking*

CONDITIONS: *Hardpack • Loose Over Hard • Dirt • Wet*

TIRE DESCRIPTION

Searching for the ultimate do-all tire? Meet the Ranger... bikepacker approved, trail ready. Weight optimized to outperform in all environments and excel on longer rides. Dry to wet, hardpack or loam, the Ranger isn't intimidated.





Photo: Abner Kingman

SIZE	WIDTH	LEVEL	WEIGHT	CASING	COMPOUND	BEAD	TIRE SIZE DESIGNATION	OPTIMAL INNER RIM WIDTH	GMS	PART #	
26"											
26"	2.8	TCS Light FR	783g	Light	Dual DNA	Aramid	67 - 559	i35 - i45	67/70	W010-0648	
27.5"											
27.5"	2.8	TCS Light FR	760g	Light	Dual DNA	Aramid	67 - 584	i35 - i45	70/67	W010-0629	
27.5"	2.8	TCS Light HG	860g	Light	Gravity DNA	Aramid	67 - 584	i35 - i45	70/67	W010-0655	
27.5"	2.8	TCS Tough FR	1044g	Tough	Dual DNA	Aramid	67 - 584	i35 - i45	70/67	W010-0654	
27.5"	3.0	TCS Light FR	855g	Light	Dual DNA	Aramid	72 - 584	i35 - i45	76/75	W010-0630	
27.5"	3.0	TCS Tough FR	855g	Tough	Dual DNA	Aramid	72 - 584	i35 - i45	76/75	W010-0656	
29"											
29"	2.25	TCS Light FR	700g	Light	Dual DNA	Aramid	55 - 622	i25 - i35	57/55	W010-0667	
NEW	29"	2.25	TCS Light FR Tanwall	700g	Light	Dual DNA	Aramid	55 - 622	i25 - i35	57/55	W010-0784
29"	2.25	TCS Light HG	791g	Light	Gravity DNA	Aramid	55 - 622	i25 - i35	57/55	W010-0666	
29"	2.25	TCS Tough FR	870g	Tough	Dual DNA	Aramid	55 - 622	i25 - i35	57/55	W010-0691	
NEW	29"	2.4	TCS Tough FR +TT	TBD	Tough	TriTec	Aramid	55 - 622	i25 - i35	59/61	W010-0735
NEW	29"	2.4	TCS Light HG +TT	TBD	Light	TriTec	Aramid	55 - 622	i25 - i35	59/61	W010-0734
NEW	29"	2.4	TCS Tough FR +TT	TBD	Tough	TriTec	Aramid	55 - 622	i25 - i35	59/61	W010-0733
NEW	29"	2.4	TCS Light FR Tanwall	700g	Light	Dual DNA	Aramid	55 - 622	i25 - i35	57/55	W010-0785
29"	3.0	TCS Light FR	880g	Light	Dual DNA	Aramid	72 - 622	i35 - i45	76/75	W010-0637	
29"	3.0	TCS Tough FR	1140g	Tough	Dual DNA	Aramid	72 - 622	i35 - i45	76/75	W010-0670	

INTRO

TIRES

SADDLES

RIMS

GRIPS

ACCSS.

INTRO

TIRES

SADDLES

RIMS

GRIPS

ACCS.



TRAILBLAZER 2.8

27.5"

USAGES: *Trail • Bikepacking*

CONDITIONS: *Hardpack • Loose Over Hard • Dirt • Loose • Rocky*

TIRE DESCRIPTION

Small enough to sneak its way into existing 29" frames yet voluptuous enough to provide the supple traction fat tires are famous for. All around winner? We think so.



SIZE	WIDTH	LEVEL	WEIGHT	CASING	COMPOUND	BEAD	TIRE SIZE DESIGNATION	OPTIMAL INNER RIM WIDTH	GMS	PART #
27.5"										
27.5"	2.8	TCS Light FR	895g	Light	Dual DNA	Aramid	67 - 584	i35 - i45	67/60	W010-0571



BRIDGER 3.0

27.5"

USAGES: Trail • Enduro • Bikepacking

CONDITIONS: Dirt • Loose • Rocky • Wet • Mud

TIRE DESCRIPTION

The Bridger brings aggressive knobs and traction to the 27.5+ market, providing confidence and predictability - and proving that the plus market is for real riding.



SIZE	WIDTH	LEVEL	WEIGHT	CASING	COMPOUND	BEAD	TIRE SIZE DESIGNATION	OPTIMAL INNER RIM WIDTH	GMS	PART #
27.5"										
27.5"	3.0	TCS Light FR	1207g	Light	Dual DNA	Aramid	72 - 584	i35 - i45	75/75	W010-0597

INTRO

TIRES

SADDLES

RIMS

GRIPS

ACCS.



NANO 2.1

29"

USAGES: *Cross-Country • Trail*

CONDITIONS: *Hardpack • Loose Over Hard • Dirt*

TIRE DESCRIPTION

This is the #1 tire choice for Tour Divide, the longest mountain bike race in the world, stretching from Canada to Mexico along the Rockies. An iconic tread design paired with proven tubeless technology come together as one solid tire that will go the distance.



SIZE	WIDTH	LEVEL	WEIGHT	CASING	COMPOUND	BEAD	TIRE SIZE DESIGNATION	OPTIMAL INNER RIM WIDTH	GMS	PART #
29"										
29"	2.1	TCS Light FR	685g	Light	Dual DNA	Aramid	52 - 622	117 - 136	52/50	W010-0528



RIDDLER 2.25 • 2.4

27.5"

29"

USAGES: *Cross-Country • Trail*

CONDITIONS: *Hardpack • Loose Over Hard • Dirt*

TIRE DESCRIPTION

Named after WTB athlete Nathan Riddle, the Riddler tire delivers raw speed yet hangs on in the corners, remaining composed and unflappable - just like Nathan's riding style.



SIZE	WIDTH	LEVEL	WEIGHT	CASING	COMPOUND	BEAD	TIRE SIZE DESIGNATION	OPTIMAL INNER RIM WIDTH	GMS	PART #
27.5"										
27.5"	2.4	TCS Tough FR	1108g	Tough	Dual DNA	Aramid	57 - 584	i25 - i35	57/60	W010-0587
29"										
29"	2.25	TCS Light FR	840g	Light	Dual DNA	Aramid	54 - 622	i20 - i25	54/57	W010-0636



#RIDEWTB



NINE LINE 2.0 • 2.25

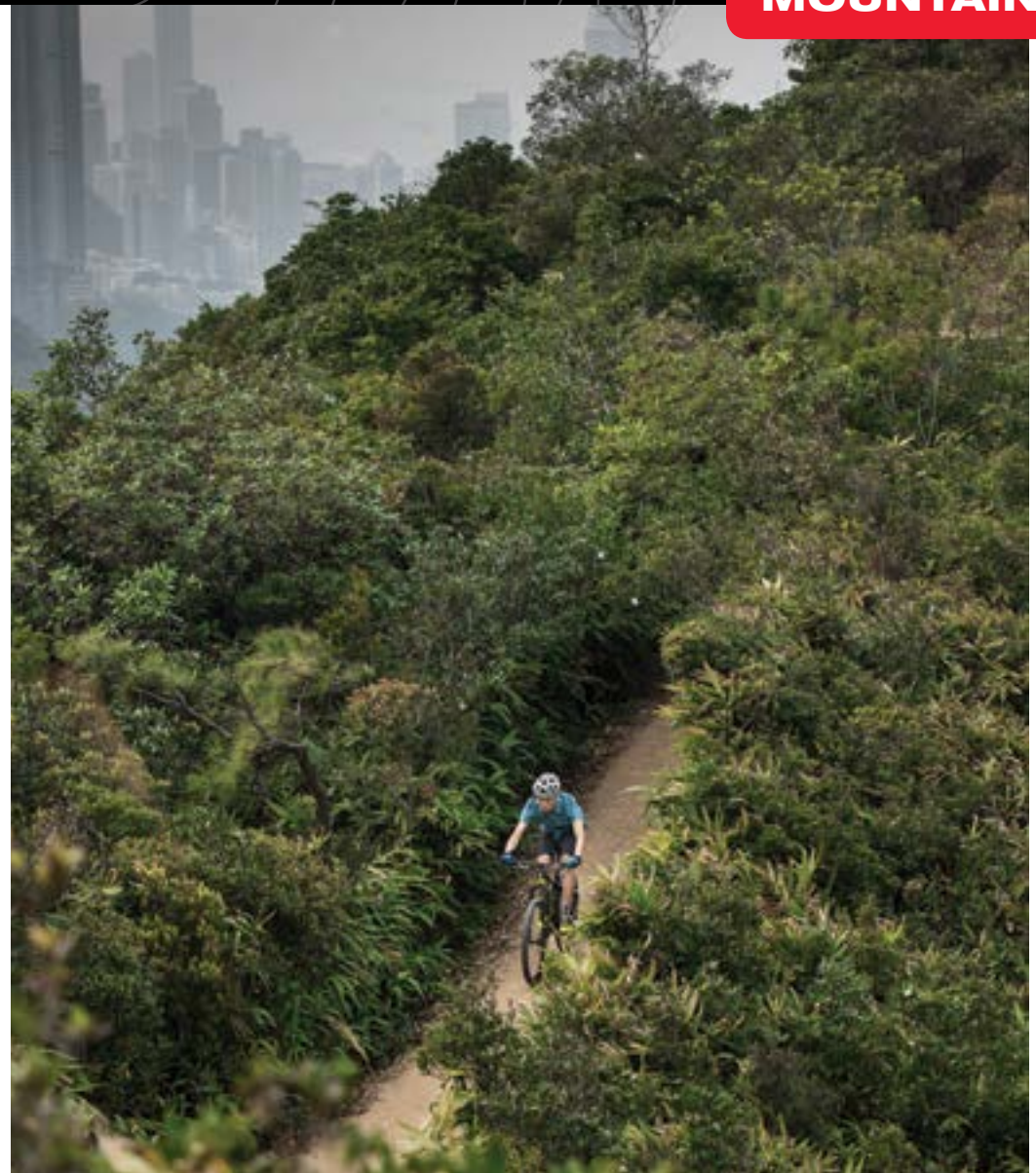
29"

USAGES: *Cross-Country • Trail*

CONDITIONS: *Hardpack • Loose Over Hard • Dirt*

TIRE DESCRIPTION

Fast rolling with pared down, consistent micro blocks that boast remarkable lateral traction and effortless rolling speed. A rounded profile and healthy dosing of working edges provide predictability while a 2.25 offering makes for an easy transition from the short track to the single track.



SIZE	WIDTH	LEVEL	WEIGHT	CASING	COMPOUND	BEAD	TIRE SIZE DESIGNATION	OPTIMAL INNER RIM WIDTH	GMS	PART #
29"										
29"	2.0	TCS Light FR	595g	Light	Dual DNA	Aramid	54 - 622	i20 - i25	54/50	W010-0527
29"	2.25	TCS Light FR	755g	Light	Dual DNA	Aramid	54 - 622	i20 - i25	54/50	W010-0520

INTRO

TIRES

SADDLES

RIMS

GRIPS

ACCS.



FRONT

REAR

VELOCIRAPTOR 2.1

26"

USAGES: *Cross-Country • Trail*

CONDITIONS: *Dirt • Loose • Rocky • Wet • Mud*

TIRE DESCRIPTION

At a time when mountain bike tires were unquestionably gum walled, the VelociRaptors came out in black and haven't looked back ever since. They changed the game in 1994 with a steering specific front and a rear that could really dig. The VelociRaptors continue to be popular because, to put it simply, they just work. Try riding one of the most classic combos of all time.



SIZE	WIDTH	LEVEL	WEIGHT	CASING	COMPOUND	BEAD	TIRE SIZE DESIGNATION	OPTIMAL INNER RIM WIDTH	GMS	PART #
26"										
26"	2.1	Comp	829g	Durable	DNA	Wire	47 - 559	i19 - i25	47/52	W010-0101
26"	2.1	Comp	829g	Durable	DNA	Wire	47 - 559	i19 - i25	47/52	W010-0102

MOUNTAIN



Photo: Ale Di Lullo

#RIDEWTB

SADDLES

WE HAVE A SADDLE FOR EVERYONE

Wider options of the Silverado and SL8 now provide our thinnest level of padding thickness for riders with sit bone measurements that fall in the medium and wide categories. Regardless of whether you're leading a drop bar sufferfest, cranking out your daily trail ride, or sending it at the bike park, there's a WTB saddle to make the ride more enjoyable. Try one out and be prepared to meet your perfect match.



INTRO

TIRES


SADDLES

RIMS

GRIPS

ACCS.

The chart below categorizes saddle selection using the simple descriptors of width and padding thickness. Once a rider has determined their sit bone width using a sit bone measurement tool, the value can be applied to the chart to determine whether their sit bones fall within the narrow, medium, or wide width ranges. From there, the rider must apply their personal preference to choose a saddle with a thin, medium, or thick amount of padding. The result is only a suggested starting point for riders to then test and confirm using our Test Ride Program at their local bike shop.

 WTB	NARROW WIDTH	MEDIUM WIDTH	WIDE WIDTH
SIT BONE MEASUREMENT	70-100mm	100-130mm	130-160mm
THIN PADDING	SL8 127 HIGH TAIL 128 SILVERADO 133	SL8 142 SILVERADO 142	SL8 150
MEDIUM PADDING	VOLT 135	VOLT 142 DEVA 145 KODA 142	VOLT 150 KODA 150
THICK PADDING	ROCKET 130	ROCKET 142 SPEED SHE 143 SPEED 145 PURE 148	ROCKET 150 COMFORT 172

INTRO

TIRES

SADDLES

RIMS

GRIPS

ACCS.



SADDLE FIT SYSTEM

ONE SIZE FITS ALL

SADDLE FIT SYSTEM DESCRIPTION

WTB's Saddle Fit System acts as a sleeved cover for one's existing saddle. A firm, molded base acts as a measuring platform for a viscoelastic pad that leaves an imprint of the rider's sit bones. Areas of greater pressure leave a deeper impression, allowing an appropriate measurement depression on the pad. Connected to the back of the WTB Saddle Fit System is a metric ruler that can then be applied to the Saddle Fit Chart to determine what saddles will most likely provide ultimate seated comfort. This is only the first step in proper saddle fit and riders should utilize the Test Ride Program to determine what saddle provides the most comfort during a ride.

DESCRIPTION	PART #
SADDLE FIT SYSTEM	
Saddle Fit System Merchandising Kit	W065-0545
WTB Saddle Fit Tool	W065-0502
WTB Test Ride Program Kit, Pack of 16 pieces	W065-0550

FRONT

1 SLIDE **2 SIT** **3 FIT**

WTB SADDLE FIT SYSTEM

NARROW **MEDIUM** **WIDE**

10 20 30 40 50 60 70 80 90 100 110 120 130 140

BACK

WTB SADDLE FIT SYSTEM

WTB has developed a Saddle Fit System that works easily with your bike. Simply slide the Saddle Fit System over existing saddles – the firm molded base provides support while the visco-elastic pad allows for a sit bone impression. A measurement tool conveniently connected to the back of the fit system provides an easily accessible metric ruler along with a suggested range of saddles for the customer to try or purchase.

Questions? Please ask the sales associate.

WTB.COM

	NARROW WIDTH	MEDIUM WIDTH	WIDE WIDTH
SIT BONE MEASUREMENT	70-100mm	100-130mm	130-160mm
THIN PADDING	SL8 127 HIGH TAIL 128 SILVERADO 133	SL8 142 SILVERADO 142	SL8 150
MEDIUM PADDING	VOLT 135	VOLT 142 DEVA 145 KODA 142	VOLT 150 KODA 150
THICK PADDING	ROCKET 130	ROCKET 142 SPEED SHE 143 SPEED 145 PURE 148	ROCKET 150 COMFORT 172

WTB SADDLE FIT SYSTEM

1 SLIDE **2 SIT** **3 FIT**

WTB Saddle Fit System Made in China
PN:W065-0502 UPC:714401655027

WTB has developed a new Saddle Fit System that works easily with your bike. Simply slide the Saddle Fit System over existing saddle – the firm molded base provides support while the visco-elastic pad allows for a sit bone impression. A measurement tool conveniently connected to the back of the fit system provides an easily accessible metric ruler along with a suggested range of saddles for the customer to try or purchase. Questions? Please ask the sales associate.

For more information on our products, sizing, and specs visit our website:
WTB.COM

	NARROW WIDTH	MEDIUM WIDTH	WIDE WIDTH
SIT BONE MEASUREMENT	70-100mm	100-130mm	130-160mm
THIN PADDING	SL8 127 HIGH TAIL 128 SILVERADO 133	SL8 142 SILVERADO 142	SL8 150
MEDIUM PADDING	VOLT 135	VOLT 142 DEVA 145 KODA 142	VOLT 150 KODA 150
THICK PADDING	ROCKET 130	ROCKET 142 SPEED SHE 143 SPEED 145 PURE 148	ROCKET 150 COMFORT 172

INTRO

TIRES

SADDLES

RIMS

GRIPS

ACCS.

SADDLE LEVELS	ACCENT COLOR	PADDING LEVEL	RAIL LEVEL	SHELL	COVER
CARBON	GOLD ACCENTS	DNA	Carbon	Carbon Composite	Microfiber
TEAM	BLACK ACCENTS	DNA	Titanium	Flex-Tuned	Microfiber
PRO	WHITE ACCENTS	DNA	Cromoly	Flex-Tuned	Microfiber
RACE	RED ACCENTS	Standard	Cromoly	Flex-Tuned	Microfiber
PROGEL	WHITE ACCENTS	Gel	Cromoly	Flex-Tuned	Microfiber
COMP	SILVER ACCENTS	Standard	Steel	Flex-Tuned	Synthetic
SPORT	SILVER ACCENTS	Standard	Steel	Flex-Tuned	Synthetic

TECHNOLOGY

LOVE CHANNEL®

Found on all WTB saddles, the Love Channel has one very important task: protecting your body from unwanted pressure. The central depression provides soft-tissue relief without sacrificing the structural integrity of the saddle.

COMFORT ZONE®

Featured exclusively on high-end WTB saddles, these small windows are cut away from the base of the saddle to provide additional relief from pressure on sensitive areas. Comfort Zone is a subtle difference that provides impressive long-term comfort.

PADDING

SADDLE PADDING

Different padding materials offer varying levels of weight, comfort and durability. Some materials are designed to provide comfort for a quick commute to work, while others are specifically tuned to provide lasting comfort throughout an all-day ride.

1. DNA PADDING

Found on all of our high-end saddles, this dense padding dramatically reduces the weight of the saddle. DNA padding also tends to hold its shape better over long rides and the lifetime of the saddle, which is important for long-term comfort.

2. STANDARD PADDING

Single density foam found on our Comp and Race level saddles. This foam is soft to the touch and is a great option for anyone experiencing sore contact points on their saddle.

3. GEL PADDING

Strategically placed gel inserts conform to the specific shape and width of a rider's sit bones to provide a fit that is unique to the rider. The gel inserts are surrounded by our Standard Padding to provide additional padding that will not pinch or put pressure on soft tissues.

RAILS

SADDLE RAILS

We offer four different saddle rail materials that provide various levels of weight, durability, flex and cost. The range of materials allows racers to choose carbon saddle rails for a lightweight advantage, while urban commuters may choose our steel rails to provide lasting durability at an affordable cost.

1. CARBON

Top-tier performance and ultimate weight savings for gram-conscious riders. These rails are designed to provide optimal support at a minimal weight.

2. TITANIUM

Nearly as light as carbon, titanium rails are able to flex without losing structural integrity, making it a great material for saddle rails.

3. CROMOLY

Increased strength and less weight make cromoly steel a noticeable upgrade over traditional steel rails. The perfect choice for bikepackers.

4. STEEL

Our entry-level saddles utilize strong and reliable steel rails to provide lasting comfort and durability at an affordable price.

SHELLS

SADDLE SHELL

The shell is the molded base you see on the underside of a saddle. It provides a supportive foundation for the padding to sit on, while also providing an attachment point for the cover. The material of the shell determines the amount a saddle can flex and therefore affects the overall comfort characteristics.

1. NYLON / CARBON COMPOSITE SHELL

The WTB Composite shell consists of nylon or carbon fiber composite. It provides a firm and supportive feel for unparalleled performance and efficiency.

2. FLEX-TUNED SHELL

The Flex-Tuned shell boasts an exceptional mix of comfortable flex and firm efficiency. Not as supple as the Soft-Shell and not as stiff as the Carbon Composite Shell, Flex-Tuned saddles provide the happy medium that is ideal for most enthusiasts.

3. SOFT-SHELL

Shock-absorbing, dual-compound saddle base. Soft-Shell saddles minimize trail vibration while providing a rigid platform for efficient pedaling.

MATERIALS

SADDLE MATERIALS

Saddles need to be supportive and comfortable, but there's more to it than that. The usage of a variety of materials in different areas of the saddle design allow us to provide durability where it is needed most, while ensuring supple comfort in areas that directly contact the rider.

1. ABR CORNERS

These durable patches of material protect the corners and sides of the saddle from rips and tears.

2. MICROFIBER COVER

Found on most WTB saddles, our Microfiber cover closely replicates the look and feel of a leather cover. The supple nature of the Microfiber Cover allows the foam to support the sit bones without interfering with its resiliency.

3. SYNTHETIC COVER

Found on entry-level WTB saddles, our Synthetic Cover provides a thicker, more durable cover that is offered at a more affordable price.

INTRO

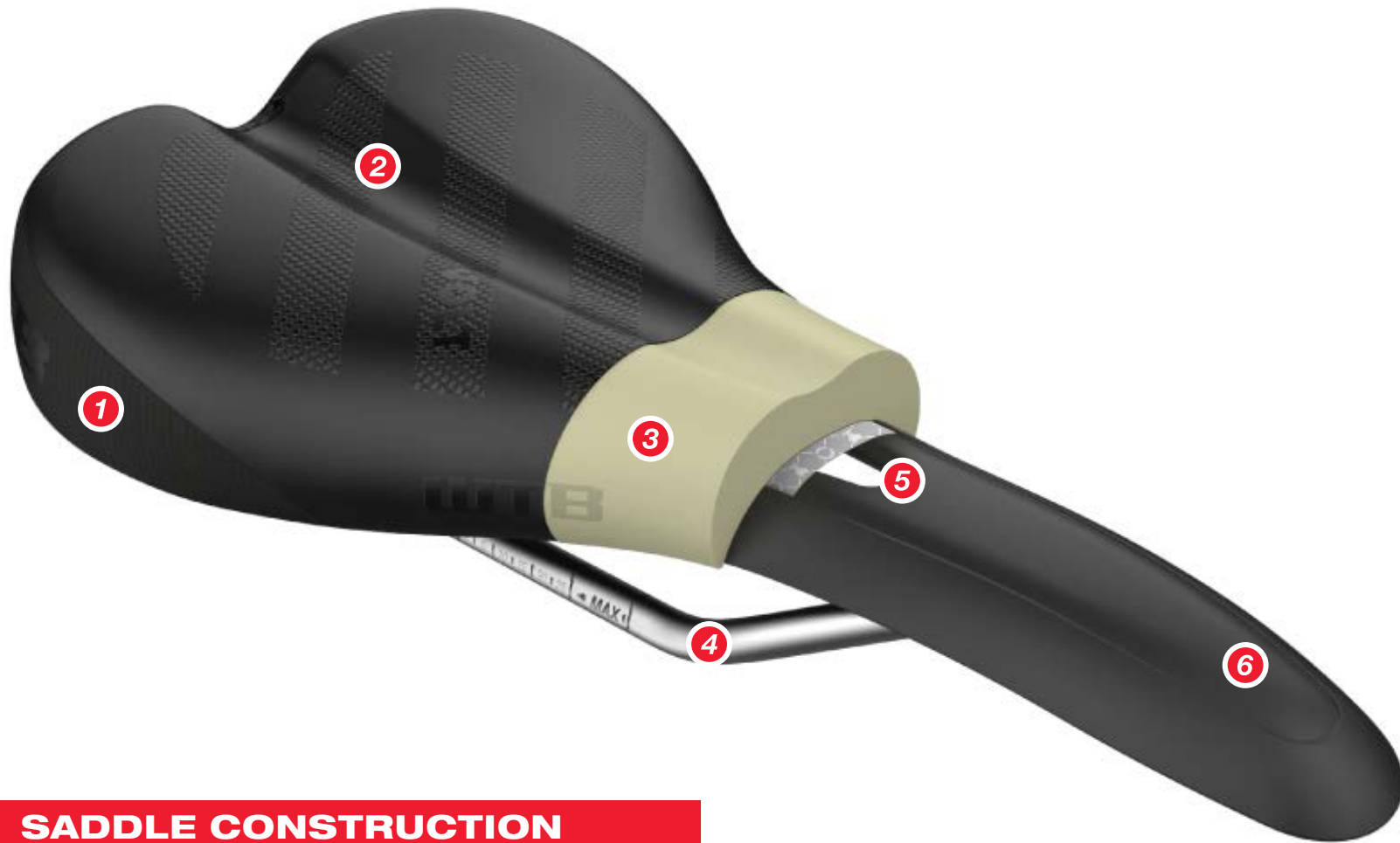
TIRES

SADDLES

RIMS

GRIPS

ACCS.



SADDLE CONSTRUCTION

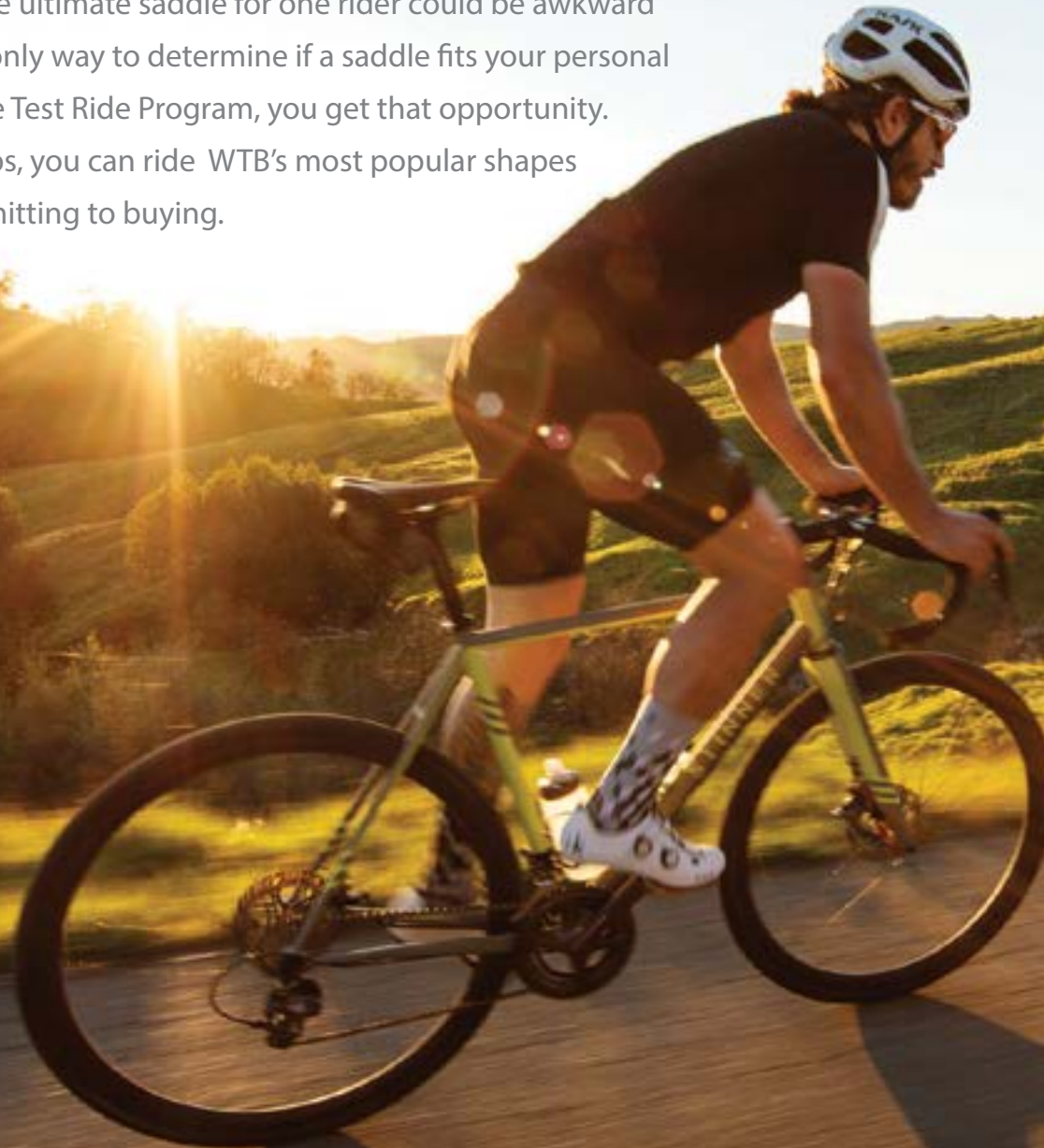
FEATURES:

- | | |
|-----------------------|-----------------------|
| 1 ABR CORNERS | 4 RAIL |
| 2 LOVE CHANNEL | 5 COMFORT ZONE |
| 3 PADDING | 6 SHELL |

TRY BEFORE YOU BUY

BECAUSE GOING ON A RIDE IS THE ULTIMATE TEST

Saddles are highly personal items. The ultimate saddle for one rider could be awkward and uncomfortable for another. The only way to determine if a saddle fits your personal anatomy is to actually ride it. With the Test Ride Program, you get that opportunity. Now, through participating bike shops, you can ride WTB's most popular shapes and find the best fit before you committing to buying.



**TEST
RIDE**

INTRO

TIRES

SADDLES

RIMS

GRIPS

ACCS.



NEW
133 LEVELS
142 WIDTHS



SILVERADO

133 **142**

USAGES: Adventure Road • Gravel • Cross-Country • Trail • Enduro

LENGTH: 274mm

SADDLE DESCRIPTION

The Silverado is one of WTB's most iconic and revered saddle shapes. Light-weight and slim, the design oozes speed while proving to be incredibly comfortable. Ride a Silverado and you'll quickly know what everyone's raving about.

LEVEL	ACCENT COLORS	SIT BONE RANGE	WIDTH	PADDING THICKNESS	PADDING LEVEL	RAIL LEVEL	SHELL	COVER	WEIGHT	PART #	
SILVERADO 133											
NARROW WIDTH											
Carbon	Gold	70-100mm	Narrow	Thin	DNA	Carbon	Carbon Composite	Microfiber	169g	W065-0395	
Team	Black	70-100mm	Narrow	Thin	DNA	Titanium	Flex-Tuned	Microfiber	197g	W065-0396	
Pro	White	70-100mm	Narrow	Thin	DNA	Cromoly	Flex-Tuned	Microfiber	218g	W065-0397	
NEW	Race	Red	70-100mm	Narrow	Thin	Standard	Cromoly	Flex-Tuned	Microfiber	266g	W065-0552
NEW	Comp	Silver	70-100mm	Narrow	Thin	Standard	Steel	Flex-Tuned	Synthetic	313g	W065-0553
	Sport	Silver	70-100mm	Narrow	Thin	Standard	Steel	Flex-Tuned	Synthetic	300g	W065-0461
SILVERADO 142											
MEDIUM WIDTH											
NEW	Team	Black	100-130mm	Medium	Thin	DNA	Titanium	Flex-Tuned	Microfiber	207g	W065-0561
NEW	Pro	White	100-130mm	Medium	Thin	DNA	Cromoly	Flex-Tuned	Microfiber	226g	W065-0562
NEW	Race	Red	100-130mm	Medium	Thin	Standard	Cromoly	Flex-Tuned	Microfiber	260g	W065-0563
NEW	Comp	Silver	100-130mm	Medium	Thin	Standard	Steel	Flex-Tuned	Synthetic	314g	W065-0564



VOLT

135

142

150

USAGES: *All Riding Usages*

LENGTH: *260mm*

SADDLE DESCRIPTION

The Volt is our most popular mountain saddle. Shaped for speed and comfort, time tested and proven, the Volt makes for an incredibly versatile saddle that has gained endless acclaim among riders.

LEVEL	ACCENT COLORS	SIT BONE RANGE	WIDTH	PADDING THICKNESS	PADDING LEVEL	RAIL LEVEL	SHELL	COVER	WEIGHT	PART #
VOLT 135										
NARROW WIDTH										
Carbon	Gold	70-100mm	Narrow	Medium	DNA	Carbon	Carbon Composite	Microfiber	148g	W065-0398
Team	Black	70-100mm	Narrow	Medium	DNA	Titanium	Flex-Tuned	Microfiber	200g	W065-0399
Pro	White	70-100mm	Narrow	Medium	DNA	Cromoly	Flex-Tuned	Microfiber	219g	W065-0400
Race	Red	70-100mm	Narrow	Medium	Standard	Cromoly	Flex-Tuned	Microfiber	249g	W065-0401
Comp	Silver	70-100mm	Narrow	Medium	Standard	Steel	Flex-Tuned	Synthetic	297g	W065-0402
Sport	Silver	70-100mm	Narrow	Medium	Standard	Steel	Flex-Tuned	Synthetic	315g	W065-0462
VOLT 142										
MEDIUM WIDTH										
Team	Black	100-130mm	Medium	Medium	DNA	Titanium	Flex-Tuned	Microfiber	204g	W065-0403
Pro	White	100-130mm	Medium	Medium	DNA	Cromoly	Flex-Tuned	Microfiber	226g	W065-0404
Race	Red	100-130mm	Medium	Medium	Standard	Cromoly	Flex-Tuned	Microfiber	270g	W065-0405
Comp	Silver	100-130mm	Medium	Medium	Standard	Steel	Flex-Tuned	Synthetic	316g	W065-0406
Sport	Silver	100-130mm	Medium	Medium	Standard	Steel	Flex-Tuned	Synthetic	334g	W065-0463
VOLT 150										
WIDE WIDTH										
Team	Black	130-160mm	Wide	Medium	DNA	Titanium	Flex-Tuned	Microfiber	214g	W065-0407
Pro	White	130-160mm	Wide	Medium	DNA	Cromoly	Flex-Tuned	Microfiber	236g	W065-0408
Race	Red	130-160mm	Wide	Medium	Standard	Cromoly	Flex-Tuned	Microfiber	280g	W065-0409
Comp	Silver	130-160mm	Wide	Medium	Standard	Steel	Flex-Tuned	Synthetic	326g	W065-0410
Sport	Silver	130-160mm	Wide	Medium	Standard	Steel	Flex-Tuned	Synthetic	344g	W065-0464

INTRO

TIRES

SADDLES

RIMS

GRIPS

ACCS.



ROCKET

130
142
150

USAGES: *Gravel • Cross-Country • Trail • Enduro • Bikepacking*

LENGTH: *265mm*

SADDLE DESCRIPTION

The Rocket is an incredibly versatile saddle. From a two minute hair-raising downhill to a 2700 mile individual time trial, this saddle is the top choice for those pushing the sport.

LEVEL	ACCENT COLORS	SIT BONE RANGE	WIDTH	PADDING THICKNESS	PADDING LEVEL	RAIL LEVEL	SHELL	COVER	WEIGHT	PART #
ROCKET 130										
NARROW WIDTH										
Team	Black	70-100mm	Narrow	Thick	DNA	Titanium	Flex-Tuned	Microfiber	210g	W065-0412
Sport	Silver	70-100mm	Narrow	Thick	Standard	Steel	Flex-Tuned	Synthetic	328g	W065-0465
ROCKET 142										
MEDIUM WIDTH										
Team	Black	100-130mm	Medium	Thick	DNA	Titanium	Flex-Tuned	Microfiber	217g	W065-0416
Pro	White	100-130mm	Medium	Thick	DNA	Cromoly	Flex-Tuned	Microfiber	237g	W065-0417
Race	Red	100-130mm	Medium	Thick	Standard	Cromoly	Flex-Tuned	Microfiber	270g	W065-0418
Comp	Silver	100-130mm	Medium	Thick	Standard	Steel	Flex-Tuned	Synthetic	320g	W065-0419
Sport	Silver	100-130mm	Medium	Thick	Standard	Steel	Flex-Tuned	Synthetic	338g	W065-0466
ROCKET 150										
WIDE WIDTH										
Team	Black	130-160mm	Wide	Thick	DNA	Titanium	Flex-Tuned	Microfiber	229g	W065-0420
Pro	White	130-160mm	Wide	Thick	DNA	Cromoly	Flex-Tuned	Microfiber	251g	W065-0421
Race	Red	130-160mm	Wide	Thick	Standard	Cromoly	Flex-Tuned	Microfiber	288g	W065-0422
Comp	Silver	130-160mm	Wide	Thick	Standard	Steel	Flex-Tuned	Synthetic	336g	W065-0423
Sport	Silver	130-160mm	Wide	Thick	Standard	Steel	Flex-Tuned	Synthetic	354g	W065-0467

ROCKET



#RIDEWTB

Photo: Ken Viale



#RIDEWTB

Photo: Sven Martin



NEW

142 · 150
WIDTHS



SL8

127

142

150

USAGES: *Adventure Road • Gravel • Cross-Country • Gravity*

LENGTH: *255mm*

SADDLE DESCRIPTION

Elegant, slight curves accentuate this inviting shape that redefines what comfort is capable of at such a low weight. From where the pavement ends, to B-road pursuits and cyclocross run ups, our SL8 saddle provides irrefutable comfort in a minimalist, svelte package.

LEVEL	ACCENT COLORS	SIT BONE RANGE	WIDTH	PADDING THICKNESS	PADDING LEVEL	RAIL LEVEL	SHELL	COVER	WEIGHT	PART #	
SL8 127											
NARROW WIDTH											
Carbon	Gold	70-100mm	Narrow	Thin	DNA	Carbon	Carbon Composite	Microfiber	149g	W065-0438	
Team	Black	70-100mm	Narrow	Thin	DNA	Titanium	Flex-Tuned	Microfiber	189g	W065-0439	
Pro	White	70-100mm	Narrow	Thin	DNA	Cromoly	Flex-Tuned	Microfiber	203g	W065-0440	
SL8 142											
MEDIUM WIDTH											
NEW	Team	Black	100-130mm	Medium	Thin	DNA	Titanium	Flex-Tuned	Microfiber	231g	W065-0565
NEW	Pro	White	100-130mm	Medium	Thin	DNA	Cromoly	Flex-Tuned	Microfiber	248g	W065-0566
SL8 150											
WIDE WIDTH											
NEW	Team	Black	130-160mm	Wide	Thin	DNA	Titanium	Flex-Tuned	Microfiber	240g	W065-0569
NEW	Pro	White	130-160mm	Wide	Thin	DNA	Cromoly	Flex-Tuned	Microfiber	256g	W065-0570

INTRO

TIRES

SADDLES

RIMS

GRIPS

ACCS.



HIGH TAIL

128

USAGES: *Adventure Road • Cross-Country • Trail • Enduro • Gravity*

LENGTH: *255mm*

SADDLE DESCRIPTION

The High Tail was originally designed to accommodate longer travel bikes with tires that would otherwise buzz saddles to smithereens. Light and svelte enough that it finds a home on all bikes - gram counters and DH hungry riders rejoice!



LEVEL	ACCENT COLORS	SIT BONE RANGE	WIDTH	PADDING THICKNESS	PADDING LEVEL	RAIL LEVEL	SHELL	COVER	WEIGHT	PART #
HIGH TAIL 128										
NARROW WIDTH										
Carbon	Gold	70-100mm	Narrow	Thin	DNA	Carbon	Carbon Composite	Microfiber	159g	W065-0392
Team	Black	70-100mm	Narrow	Thin	DNA	Titanium	Flex-Tuned	Microfiber	200g	W065-0393
Pro	White	70-100mm	Narrow	Thin	DNA	Cromoly	Flex-Tuned	Microfiber	225g	W065-0394



#RIDEWTB

INTRO

TIRES

SADDLES

RIMS

GRIPS

ACCS.



PURE
148

USAGES: *Trail • Enduro • Bikepacking*

LENGTH: *273mm*

SADDLE DESCRIPTION

An excellent all-mountain and distance saddle, the Pure features a drop nose design that prevents hang ups, as well as enough padding for all day comfort. The Pure is a sure bet for almost any rider and an even better bet for bikepackers!



LEVEL	ACCENT COLORS	SIT BONE RANGE	WIDTH	PADDING THICKNESS	PADDING LEVEL	RAIL LEVEL	SHELL	COVER	WEIGHT	PART #
PURE 148										
MEDIUM WIDTH										
Team	Black	100-130mm	Medium	Thick	DNA	Titanium	Flex-Tuned	Microfiber	242g	W065-0424
Pro	White	100-130mm	Medium	Thick	DNA	Cromoly	Flex-Tuned	Microfiber	263g	W065-0425
Race	Red	100-130mm	Medium	Thick	Standard	Cromoly	Flex-Tuned	Microfiber	297g	W065-0426
Progel	White	100-130mm	Medium	Thick	Gel	Steel	Flex-Tuned	Synthetic	375g	W065-0488
Comp	Silver	100-130mm	Medium	Thick	Standard	Steel	Flex-Tuned	Synthetic	346g	W065-0427
Sport	Silver	100-130mm	Medium	Thick	Standard	Steel	Flex-Tuned	Synthetic	364g	W065-0468



DEVA

145

USAGES: *Gravel • Cross-Country • Trail • Enduro*

LENGTH: *250mm*

SADDLE DESCRIPTION

Among the most beloved saddles in WTB history, the Deva is back, in all its previous glory. Designed to suit the female form, without flaunting flowers or pink butterflies are comfortable enough that even the manliest men are able to look past the label.



LEVEL	ACCENT COLORS	SIT BONE RANGE	WIDTH	PADDING THICKNESS	PADDING LEVEL	RAIL LEVEL	SHELL	COVER	WEIGHT	PART #
DEVA 145										
MEDIUM WIDTH										
Team	Black	100-130mm	Medium	Medium	DNA	Titanium	Soft	Microfiber	200g	W065-0514
Pro	White	100-130mm	Medium	Medium	DNA	Cromoly	Soft	Microfiber	208g	W065-0515
Progel	White	100-130mm	Medium	Medium	Gel	Steel	Flex-Tuned	Microfiber	291g	W065-0517
Comp	Silver	100-130mm	Medium	Medium	Standard	Steel	Flex-Tuned	Synthetic	324g	W065-0518



#RIDEWTB



KODA

142

150

USAGES: *Cross-Country • Trail • Enduro • Bikepacking*

LENGTH: *255mm*

SADDLE DESCRIPTION

Designed through testing and feedback from Rebecca Rusch, we set out to make the ultimate saddle to suit her endless rides. All-day comfort is achieved through a generously open channel that divides supportive outer zones to alleviate pressure on sensitive bits. Its short nose provides seamless on-off transitions while a slightly swooped shape provides an adequate tail to brace against. The Koda boasts a shape that everyone can enjoy, making it female-focused without being women's specific.



LEVEL	ACCENT COLORS	SIT BONE RANGE	WIDTH	PADDING THICKNESS	PADDING LEVEL	RAIL LEVEL	SHELL	COVER	WEIGHT	PART #
KODA 142										
MEDIUM WIDTH										
Team	Black	100-130mm	Medium	Medium	DNA	Titanium	Flex-Tuned	Microfiber	210g	W065-0537
Pro	White	100-130mm	Medium	Medium	DNA	Cromoly	Flex-Tuned	Microfiber	230g	W065-0538
Race	Red	100-130mm	Medium	Medium	Standard	Cromoly	Flex-Tuned	Microfiber	276g	W065-0539
Comp	Silver	100-130mm	Medium	Medium	Standard	Steel	Flex-Tuned	Synthetic	326g	W065-0540
KODA 150										
WIDE WIDTH										
Team	Black	130-160mm	Wide	Medium	DNA	Titanium	Flex-Tuned	Microfiber	223g	W065-0541
Pro	White	130-160mm	Wide	Medium	DNA	Cromoly	Flex-Tuned	Microfiber	233g	W065-0542
Race	Red	130-160mm	Wide	Medium	Standard	Cromoly	Flex-Tuned	Microfiber	281g	W065-0543
Comp	Silver	130-160mm	Wide	Medium	Standard	Steel	Flex-Tuned	Synthetic	333g	W065-0544

INTRO

TIRES

SADDLES

RIMS

GRIPS

ACCS.



SPEED

148

USAGES: *Urban • Trail • Bikepacking*

LENGTH: *265mm*

SADDLE DESCRIPTION

WTB's best-selling saddle utilizes our shock absorbing, dual compound Soft-Shell base to provide unparalleled comfort at an excellent value. Supportive padding and mid dimensions make for a near fool-proof favorite at a don't-think-about-it-twice price.



Photo: Sven Martin

LEVEL	ACCENT COLORS	SIT BONE RANGE	WIDTH	PADDING THICKNESS	PADDING LEVEL	RAIL LEVEL	SHELL	COVER	WEIGHT	PART #
PURE 148										
MEDIUM WIDTH										
Pro	White	100-130mm	Medium	Thick	DNA	Cromoly	Soft	Microfiber	281g	W065-0429
Gel	White	100-130mm	Medium	Thick	Gel	Cromoly	Soft	Microfiber	435g	W065-0430
Comp	Black	100-130mm	Medium	Thick	Standard	Steel	Soft	Synthetic	369g	W065-0432
Comp	Silver	100-130mm	Medium	Thick	Standard	Steel	Soft	Synthetic	369g	W065-0431
Sport	Black	100-130mm	Medium	Thick	Standard	Steel	Soft	Synthetic	387g	W065-0469



SPEED SHE

143

USAGES: *Urban • Trail • Bikepacking*

LENGTH: *240mm*

SADDLE DESCRIPTION

This female-specific saddle has become one of our most popular models with its ergonomic shape, smooth curves and low-profile stitching. Its medium dimensions and rounded, fall-away profile make the Speed She an easy-to-ride, easy-to-manuever, women's saddle.



LEVEL	ACCENT COLORS	SIT BONE RANGE	WIDTH	PADDING THICKNESS	PADDING LEVEL	RAIL LEVEL	SHELL	COVER	WEIGHT	PART #
SPEED SHE 143										
MEDIUM WIDTH										
Progel	White	70-100mm	Narrow	Thin	Gel	Steel	Carbon Composite	Synthetic	169g	W010-0555
Comp	Black	70-100mm	Narrow	Thin	Standard	Steel	Flex-Tuned	Synthetic	169g	W010-0555

INTRO

TIRES

SADDLES

RIMS

GRIPS

ACCS.



#RIDEWTB



COMFORT

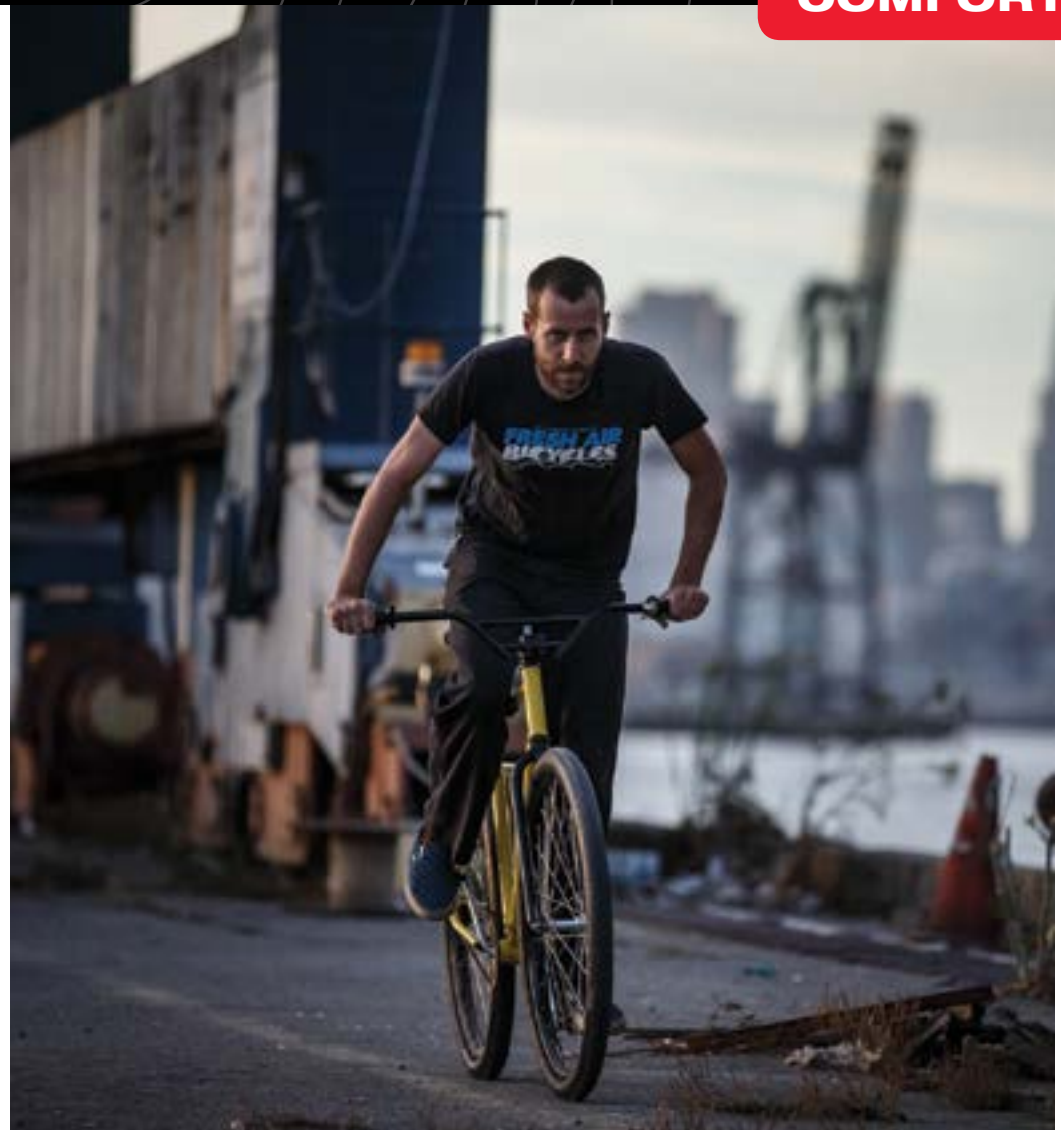
172

USAGES: *Urban*

LENGTH: *260mm*

SADDLE DESCRIPTION

The sporty, Comfort saddle suits recreational and leisure riders looking for a deeply cushioned saddle with broad sit bone support. This is the official saddle of the WTB employee grocery-getter cruiser fleet.



LEVEL	ACCENT COLORS	SIT BONE RANGE	WIDTH	PADDING THICKNESS	PADDING LEVEL	RAIL LEVEL	SHELL	COVER	WEIGHT	PART #
COMFORT 172										
WIDE WIDTH										
ProGel	Black	130-160mm	Wide	Thick	Gel	Steel	Soft	Microfiber	437g	W065-0489
Comp	Black	130-160mm	Wide	Thick	Standard	Steel	Flex-Tuned	Synthetic	397g	W065-0436
Sport	Black	130-160mm	Wide	Thick	Standard	Steel	Flex-Tuned	Synthetic	397g	W065-0437

RIMS

PUTTING PERFORMANCE FIRST

Every single WTB rim is designed to strike the perfect balance between withstanding abuse at performance focused weights, while also ensuring they don't fall apart simply in the name of saving weight. We've upped our game even more this year with TCS 2.0 rims, which provide riders with a more robust, easily installed and dependable tubeless system. TCS 2.0 rims employ a new design that allows for easier tire mounting while also increasing the overall reliability of the tubeless system.



We've streamlined our rim line to be more comprehensive and intuitive regarding the widths available for each product family. Our toughest rims, KOM Tough and Asym, are only available with wide inner rim widths that are most appropriate for trail, enduro and gravity use. On the other end of the spectrum, our lightest rims, KOM Light, Scraper and Frequency CX, are available in the full spectrum of inner rim widths to provide a lightweight option for everything from adventure road usage to plus-size trail riding. This chart showcases the full range of our new TCS 2.0 rims, which provide a more robust, easily installed and dependable tubeless system through the use of an all-new Solid Strip.

RIM NAME	WHEEL SIZE	i19	i21	i23	i25	i29	i35	i40	i45	TECHNOLOGIES
KOM LIGHT	27.5"									
	29"									
KOM TOUGH	27.5"									
	29"									
ASYM	26"									
	27.5"									
	29"									
FREQUENCY CX	700c									

- INTRO
- TIRES
- SADDLES
- RIMS
- GRIPS
- ACCS.

TERMINOLOGY

ISO/ETRTO COMPLIANT

Internationally standardized tire bead and rim sizing. This ensures that the fit and relationship between a rim and a tire are as secure and user-friendly as possible.

CID (COMPATIBLE INTEGRATED DESIGN)

Each part within the system works with others available in the industry. If you need a new part, chances are it's already in stock at your local bike shop.

SLEEVED

Rim ends are joined together using an extruded aluminum insert that matches the inner cavity of the rim. Both ends of the rim are hydraulically pressed over the tight tolerances of the insert and then further reinforced by industrial epoxy.

PINNED

Rim ends are joined together using steel pins that press into cavities located directly beneath the bead seat area. Both ends of the rim are hydraulically pressed over the tight tolerances of the pins and then further reinforced by industrial epoxy.

TECHNOLOGY

ON-RAMP

An angled inner rim profile that allows the bead of the tire to move easily and smoothly into place during installation and inflation.

4D DRILLING

Our spoke holes are drilled at precise departure angle to align the spoke head and nipple with the hub flange, eliminating binding and lateral loading while also dispersing the load more evenly over a greater area. This prolongs the wheel's lifespan and increases stability.

I-BEAM

The I-Beam adds strength to the inner rim cavity. This distinctive support counteracts spoke loads and provides lateral rigidity.

DOUBLE WALL

Two separate layers of rim material provide increased structural strength while also preventing any contact between spoke nipples and the rim strip/tape which could lead to an unreliable tubeless set-up.

DROPZONE NEW

Designed to make tire removal easier, the Dropzone is a downward slope from the bead seat to the center of the rim, which allows the tire bead to quickly and easily fall into the optimal area for tire removal. Dropzone is only found on rims that have an inner rim width of 40-45mm.

SIDEWALL INDICATOR

Grooved braking surface that indicates when the rim needs to be replaced due to sidewall wear from the use of rim brakes. It's time to replace the rim once the braking surface wears even with the bottom of the groove.

DISC ONLY

Disc Only rims benefit from lighter weights because they do not require the amount of material traditional rims require for the braking surface. Do not use Disc Only rims with rim brake systems, such as cantilever or v-brake.

ASYM

Asym rims use an asymmetrical design to create a rim that more evenly distributes spoke tension, resulting in an easier to build, stronger, and more reliable wheel.

UNBENDIUM BULGE

By adding a thin rib of aluminum to the outer hips of the rim, we've added measurable strength and stiffness to counter torsional and axial loads. This WTB innovation is found exclusively on Frequency rims.

TUBE TYPE

Tube Type rims are designed to be used with inner tubes. These rims utilize an ETRTO tube type bead shape that relies on tire retention through proper installation and inflation of a properly sized inner tube.

SYSTEMS

TCS

Designed to meet UST and ETRTO Standards, TCS (Tubeless Compatible System) tires feature the best of both worlds: they boast the ride benefits of a tubeless tire with the minimal weight of a tube type tire. This versatile system combines WTB's weight optimized casings, tread compound of your choice, and a tubeless, UST bead.

TCS TAPE

Light, strong, and extra sticky for durable, long-lasting, leak-resistant performance.

TCS VALVE

Taper design allows for optimal fit on a wide variety of rims. Removable valve core for easy cleaning and uninterrupted inflation. Available in 34mm and 46mm options as well as some vibrant anodized colors.

TCS 2.0 NEW

TCS 2.0 creates a more robust, easily installed and dependable tubeless system. A recessed channel along the center of TCS 2.0 rims allows installation of the all-new Solid Strip, which prevents tubeless tape from sagging at the spoke holes and results in a smooth, consistent interface between the tire and rim. Installation of the Solid Strip allows for more pliable, and easy to install, Flex Tape to provide the airtight seal needed for a proper tubeless set-up.

SOLID STRIP **NEW**

Narrower and more durable rim strip that sits in the rim bed to eliminate any possibility of a broken spoke puncturing the tubeless tape and causing the system to lose air. Solid Strip prevents tubeless tape from sagging at the spoke holes, which ensures a smooth surface between the tire and rim, prevents air from escaping during installation and makes it considerably easier to mount tubeless tires using only a floor pump. Installation of the Solid Strip allows for application of Flex Tape, which makes tubeless tape installation much easier.

TCS 2.0 FLEX TAPE **NEW**

Flex Tape is a thin, pliable tape that is applied over the Solid Strip to provide an airtight seal between our TCS (Tubeless Compatible System) tires and rims. Installation of Flex Tape is considerably easier than traditionally bulky tubeless tape. Flex Tape can only be installed in conjunction with a WTB Solid Strip on a TCS 2.0 rim.



“Having trust in your equipment is one of the most important pieces to the puzzle. The TCS system is one that I can count on all season long.”

- Marco Osborne

INTRO

TIRES

SADDLES

RIMS

GRIPS

ACCS.



NEW

KOM LIGHT

26"

27.5"

29"

USAGES: *Adventure Road • Gravel • Cyclocross • Cross-Country • Trail*

INNER RIM WIDTHS: *i21 • i23 • i25 • i29 • i35 • i40 • i45*

RIM DESCRIPTION

Our lightest alloy rim, the KOM Light epitomizes affordable, high-end performance at nearly the same weight as carbon. KOM Light rims employ an open cavity design to make them sprightly enough for 200 miles of gravel, while strong AL 6069 alloy make them strong enough to handle daily hammering on a trail bike. We've also updated the spoke bed to provide a more congruent interface between the spoke nipple and rim. Our new TCS 2.0 rims deliver the easiest to mount and most reliable tubeless system we've ever made.

RIM TECHNOLOGY



WHEEL SIZE	INNER RIM WIDTH	WEIGHT	SPOKE HOLE COUNT	RIM SIZE DESIGNATION	OPTIMAL TIRE SECTION WIDTHS	PART #
26"						
26"	i40	TBD	32h	40-559	64mm-72mm	W020-0575
27.5"						
27.5"	i23	TBD	32h	23-584	30mm-54mm	W020-0578
27.5"	i25	423g	32h	25-584	42mm-60mm	W020-0557
27.5"	i29	476g	32h	29-584	55mm-65mm	W020-0559
27.5"	i35	541g	32h	35-584	55mm-72mm	W020-0561
27.5"	i40	560g	32h	40-584	64mm-72mm	W020-0563
27.5"	i45	TBD	32h	45-584	67mm-72mm	W020-0576
29"						
29"	i21	426g	32h	21-622	30mm-54mm	W020-0555
29"	i23	443g	32h	23-622	30mm-54mm	W020-0556
29"	i25	450g	32h	25-622	30mm-54mm	W020-0558
29"	i29	509g	32h	29-622	55mm-65mm	W020-0560
29"	i35	624g	32h	35-622	55mm-72mm	W020-0562
29"	i40	594g	32h	40-622	64mm-72mm	W020-0564
29"	i45	642g	32h	45-622	67mm-72mm	W020-0577

INTRO
TIRES
SADDLES
RIMS
GRIPS
ACCS.

KOM LIGHT



Photo: Abner Kingman

#RIDEWTB



#RIDEWTB



NEW

KOM TOUGH

27.5"

29"

USAGES: *Trail • Enduro • Gravity • Bikepacking*

INNER RIM WIDTHS: *i25 • i29 • i35 • i40 • i45*

RIM DESCRIPTION

Built for bashing, whether on a gravity shred sled or a fully loaded bikepacking rig. KOM Tough rims are extruded from top-tier AL 6069 alloy to provide utmost durability at a reasonable weight. Our legendary I-Beam construction has evolved to further reinforce the rim with dual support beams that provide increased strength and stiffness for the world's most aggressive riders. Proven on the toughest tracks of the Enduro World Series, depended on for daily trail rides, and trusted while bikepacking in remote regions of the world.

RIM TECHNOLOGY



WHEEL SIZE	INNER RIM WIDTH	WEIGHT	SPOKE HOLE COUNT	RIM SIZE DESIGNATION	OPTIMAL TIRE SECTION WIDTHS	PART #
27.5"						
27.5"	i25	466g	32h	25-584	42mm-60mm	W020-0565
27.5"	i29	490g	32h	29-584	55mm-65mm	W020-0567
27.5"	i35	567g	32h	35-584	55mm-72mm	W020-0569
27.5"	i40	614g	32h	40-584	64mm-72mm	W020-0571
27.5"	i45	662g	32h	45-584	67mm-72mm	W020-0573
29"						
29"	i25	493g	32h	25-622	42mm-60mm	W020-0566
29"	i29	522g	32h	29-622	55mm-65mm	W020-0568
29"	i35	615g	32h	35-622	55mm-72mm	W020-0570
29"	i40	651g	32h	40-622	64mm-72mm	W020-0572
29"	i45	700g	32h	45-622	67mm-72mm	W020-0574

INTRO

TIRES

SADDLES

RIMS

GRIPS

ACCS.



ASYM

26"

27.5"

29"

USAGES: *Cross-Country • Trail • Enduro • Bikepacking*

INNER RIM WIDTHS: *i29 • i35*

RIM DESCRIPTION

Asym rims use an asymmetrical design to create a rim that evenly distributes tension, doesn't require dishing, and makes for a faster wheel assembly. High-end alloy and an open cavity design keep Asym weights down while eyelets prolong longevity and prevent binding. Featuring a full TCS inner rim profile, Asym rims provide a lightweight, high performance, value-driven option that works exceptionally well with wheel building machines.



RIM TECHNOLOGY



WHEEL SIZE	INNER RIM WIDTH	WEIGHT	SPOKE HOLE COUNT	RIM SIZE DESIGNATION	OPTIMAL TIRE SECTION WIDTHS	PART #
26"						
26"	i35	540g	32h	35-599	55mm-72mm	W020-0524
27.5"						
27.5"	i29	495g	32h	29-584	55mm-65mm	W020-0495
27.5"	i35	570g	32h	35-584	55mm-72mm	W020-0497
29"						
29"	i29	583g	32h	29-622	55mm-65mm	W020-0496
29"	i35	612g	32h	35-622	55mm-72mm	W020-0498

INTRO
TIRES
SADDLES
RIMS
GRIPS
ACCS.







FREQUENCY CX

700c

USAGES: *Adventure Road • Cyclocross*

INNER RIM WIDTHS: *i19*

RIM DESCRIPTION

Cross riders fear not, your rim is supported. Yes, a robust pillar, the I-Beam, runs down the center of the Frequency CX's rim cavity. Correct, you should go find some barriers to bunny hop.



RIM TECHNOLOGY



WHEEL SIZE	INNER RIM WIDTH	WEIGHT	SPOKE HOLE COUNT	RIM SIZE DESIGNATION	OPTIMAL TIRE SECTION WIDTHS	PART #
700c						
700c	i19	406g	28h	19-622	28mm-52mm	W020-0485
700c	i19	406g	32h	19-622	28mm-52mm	W020-0477

INTRO

TIRES

SADDLES

RIMS

GRIPS

ACCSS.



Photo: Cass Gilbert

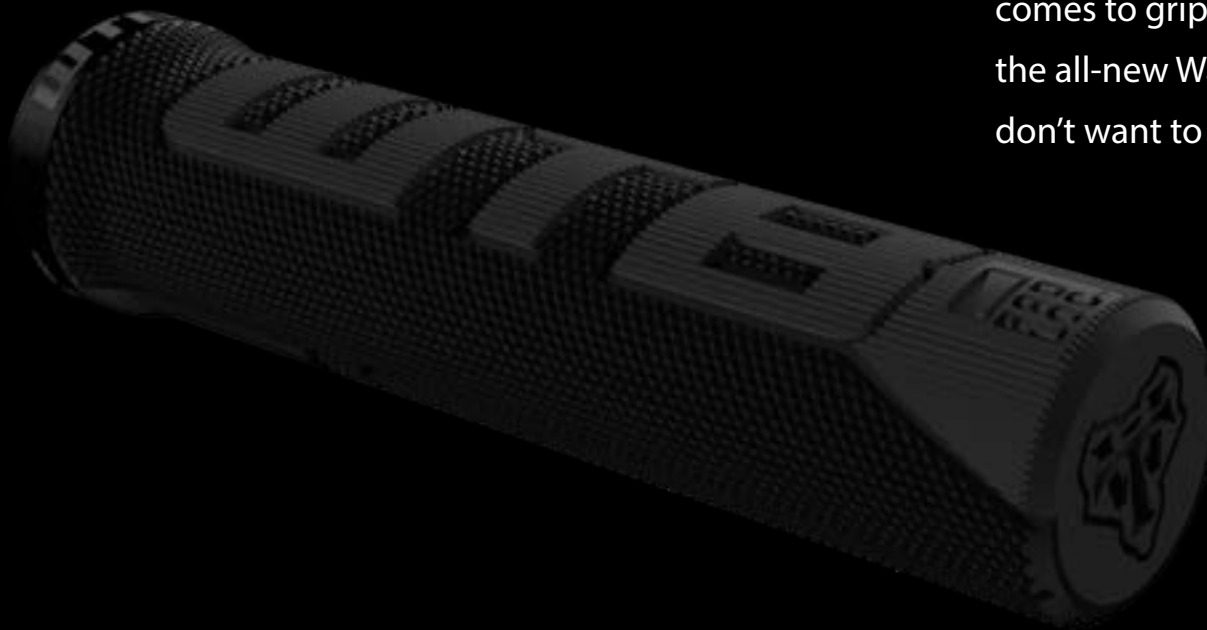


#RIDEWTB

GRIPS

ULTIMATE HAND COMFORT

Too often overlooked, the interface between hand and handlebar is one of the most sensitive contact points between rider and bike. We introduced PadLoc grips as a means of providing unrivaled hand comfort through more squishy rubber and fewer metal clamps. More of a traditionalist when it comes to grips? Check out the large, squishy blocks of the all-new Wafel grip and don't even try to tell us you don't want to give it a squeeze!



INTRO

TIRES

SADDLES

RIMS

GRIPS

ACCS.



PADLOC™ TECHNOLOGY

FEATURES:

- | | |
|--------------------------|---------------------------|
| 1 INNER LOCK RING | 3 SUB-FRAME |
| 2 CONTACT RUBBER | 4 WEDGE TECHNOLOGY |

PADLOC™ DESCRIPTION

PadLoc technology utilizes a rubberized wedge shape that increases comfort and control. The rubberized wedge integrates perfectly with a PadLoc handlebar to eliminate grip rotation and provide the ultimate level of grip comfort.

1. INNER LOCK RING

Inner anchor to PadLoc system, eliminating horizontal, outer movement.

2. CONTACT RUBBER

Inviting outer rubber featuring keyed internal ovals that lock the rubber to the sub-frame.

3. SUB-FRAME

Rigid sleeve that integrates seamlessly with a wedge-cut handlebar end, providing a base skeleton for a one-piece grip.

4. WEDGE TECHNOLOGY

- Rubberized, forgiving wedge shape that greatly reduces ulnar nerve pressure.
- The unique non-rotating wedge shape keeps the grip from slipping, twisting and rotating.

INTRO

TIRES

SADDLES

RIMS

GRIPS

ACCS.



WINGNUT

PADLOC™

USAGES: *Urban • Cross-Country • Trail*

SIZE: *135mm X 32mm*

GRIP DESCRIPTION

Increased comfort and support have always been the design focuses behind winged grips, however the additional leverage generated by the winged surface inevitably leaves them twisting around the handlebar. The Wingnut eliminates any possibility of unwanted grip rotation, while also removing the need for a metal outboard clamp, which is replaced by the infinitely more comfortable PadLoc Relief.

SIZE	COLORS	DETAILS	PART #
135mm x 32mm	Blk / Gray	Zero Rotational Slip, Comfort Design.	W075-0056



ACE

PADLOC™

USAGES: *Cross-Country • Trail • Enduro • Gravity*

SIZE: *135mm X 31-34mm*

GRIP DESCRIPTION

A gently ergonomic rise to the Ace's center provides an even closer attention to rider comfort when paired with the Ace's PadLoc Relief. A raised mosaic of grip lines also provides enhanced feel in the wet, making the Ace and all-around favorite.

SIZE	COLORS	DETAILS	PART #
135mm x 31-34mm Bulge	Army / Blk	Zero Rotational Slip, Comfort Design.	W075-0053



CLYDESDALE

PADLOC™

USAGES: *Cross-Country • Trail • Enduro • Gravity*

SIZE: *135mm X 33mm*

GRIP DESCRIPTION

Big riders, fear no more: you can have comfort and a real grip for your hands. The Clydesdale's generous 33mm profile made from our high end Contact Rubber pairs perfectly with our PadLoc Relief, ensuring that big hands get high-end features, too.

SIZE	COLORS	DETAILS	PART #
135mm x 33mm	Blk / Gray	Zero Rotational Slip, Comfort Design.	W075-0051



COMMANDER

PADLOC™

USAGES: *Cross-Country • Trail • Enduro • Gravity*

SIZE: *135mm X 30mm*

GRIP DESCRIPTION

Jerome Clementz' grip of choice. Prominent lettering lets people know you're in charge while Contact Rubber and the PadLoc Relief eliminate movement and provide an invitingly tactile feel. Ride hard and shift happy.

SIZE	COLORS	DETAILS	PART #
135mm x 30mm	Blk / Gray	Zero Rotational Slip, Comfort Design.	W075-0060

INTRO

TIRES

SADDLES

RIMS

GRIPS

ACCS.

INTRO

TIRES

SADDLES

RIMS

GRIPS

ACCS.



THINLINE

PADLOC™

USAGES: *Cross-Country • Trail • Enduro*

SIZE: *135mm X 28mm*

GRIP DESCRIPTION

A thin silhouette and opposing working edges provide irrefutable grip, even in the wet. The Thinline's 28mm svelte shape features the PadLoc relief so that even slim profiles get big comfort.

SIZE	COLORS	DETAILS	PART #
135mm x 28mm	Blk / Gray	Zero Rotational Slip, Comfort Design.	W075-0054



NEW

PADLOC BAR ENDS

PADLOC™

USAGES: *Trail • All-Mountain • Enduro*

SIZE: *15.3mm to 20mm*

GRIP DESCRIPTION

Want to try PadLoc but aren't prepared to fully commit? We understand; even though we know you'll be satisfied with your decision. These bar ends allow you to use traditional single and dual clamp grips with a handlebar that has been cut for PadLoc grips. Each one is made of a durable nylon with 33% mixed fiber for reinforcement and can fit nearly all handlebars - from an inner diameter of 15.3mm to 20mm. They add 1.4mm in length to each side of the handlebar and are installed using only a Phillips screwdriver.

SIZE	COLORS	DETAILS	PART #
15.3mm to 20mm	Blk	Padloc™ Replacement Bar End	W010-0555

PADLOC™ GRIPS



#RIDEWTB



NEW

WAFEL

SINGLE CLAMP

USAGES: *Trail • Enduro • Gravity • Bikepacking*

SIZE: *130mm X 30mm*

GRIP DESCRIPTION

Stickier than syrup and more desirable than bacon. Large blocks of conforming rubber cover the entirety of the Wafel grip, while ample spacing allows them to smooch independently for increased grip while also providing an exit channel for muck and water.



MOTO X

DUAL CLAMP

USAGES: *Cross-Country • Trail • Enduro*

SIZE: *135mm X 35mm*

GRIP DESCRIPTION

The Moto X Clamp on combines muscular, large knobs with a wide diameter. At 35 millimeters in width, it is the thickest grip in the WTB line, providing the perfect point of contact for riders with large hands. Dual aluminum clamps securely attach the grip to the bar for optimal fit.

SIZE	COLORS	DETAILS	PART #
130mm x 30mm	Blk /Blk	Single Clamp-On, DNA Rubber, Large Square Knobs	W075-0064
	Blk / Silver		W075-0065

SIZE	COLORS	DETAILS	PART #
135mm x 35mm	Blk /Blk	Dual Clamp-On, DNA rubber, large knobs, windowed sleeve	W075-0031



TECH TRAIL

DUAL CLAMP

USAGES: *Cross-Country • Trail • Enduro*

SIZE: *135mm X 30mm*

GRIP DESCRIPTION

These slim grips feature dual aluminum clamps and a windowed sleeve for superior handlebar feel. At 30 millimeters in diameter, it is the narrowest grip in the WTB line providing the perfect point of contact for riders with medium to small hands.

SIZE	COLORS	DETAILS	PART #
135mm x 30mm	Blk /Blk	Dual Clamp-On, DNA rubber, small knobs, windowed sleeve	W075-0034



COMFORT ZONE

WING DUAL CLAMP

USAGES: *Urban • Cross-Country • Trail • Bikepacking*

SIZE: *142mm X 30mm*

GRIP DESCRIPTION

The Comfort Zone Clamp-On grips feature a large, soft platform to dissipate force onto a greater surface area, preventing soreness and pain from occurring. Soft DNA rubber and smooth edges make the Comfort Zone grips a best seller among all rider types.

SIZE	COLORS	DETAILS	PART #
142mm x 30mm	Blk /Blk	Clamp-On, DNA compound, WTB logo, includes endplugs	W075-0024

INTRO

TIRES

SADDLES

RIMS

GRIPS

ACCS.

INTRO

TIRES

SADDLES

RIMS

GRIPS

ACCS.



TECHNICAL TRAIL

SLIP-ON

USAGES: *Cross-Country • Trail*

SIZE: *130mm X 27mm*

GRIP DESCRIPTION

These slim grips feature built-in zip-tie channels to keep the grip stable in sloppy conditions. The Technical Trail grips are easy to cut and are compatible with trigger and grip shift.

SIZE	COLORS	DETAILS	PART #
130mm x 27mm	Blk /Blk	DNA compound, small spikey pattern with closed ends	W075-0013

TRAIL II

SLIP-ON

USAGES: *Cross-Country • Trail • Enduro*

SIZE: *142mm X 30mm*

GRIP DESCRIPTION

Trail II grips feature a supportive, angled ridge to prevent outward hand slippage while the scaly design delivers an unshakeable grip through any trail condition at hand.

SIZE	COLORS	DETAILS	PART #
142mm x 30mm	Blk /Blk	WTB DNA rubber	W075-0061



WEIRWOLF

SLIP-ON

USAGES: *Cross-Country • Trail*

SIZE: *135mm X 35mm*

GRIP DESCRIPTION

Identical to the popular and aggressive WeirWolf tire tread, these grips are perfect for fast-paced, all-mountain riding. These dual compound grips come in three colors and the ends are closed for added durability.

SIZE	COLORS	DETAILS	PART #
135mm x 35mm	Blk / Gray	Gel contact with firm Kraton base, aggressive tread	W075-0018
	Blk / Red		W075-0019



INTRO

TIRES

SADDLES

RIMS

GRIPS

ACCS.



#RIDEWTB



ORIGINAL TRAIL

SLIP-ON

USAGES: *Cross-Country • Trail*

SIZE: *130mm X 27mm*

GRIP DESCRIPTION

The WTB Original Trail grip excels on Cyclocross, trail, and all-purpose riding. With its smooth octagonal shape, DNA rubber compound, and small flanges, the Original Trail grip is comfortable during all-day epic rides.

SIZE	COLORS	DETAILS	PART #
130mm x 27mm	Blk /Blk	DNA compound, smooth octagonal ergo shape with closed ends	W075-0001



DC TRAIL

SLIP-ON

USAGES: *Cross-Country • Trail*

SIZE: *135mm X 32mm*

GRIP DESCRIPTION

The DC Trail's plush outer gel with a tight base material for twist resistance is perfect for Cyclocross, Trail and comfort riding. The linked, diamond-shaped WTB logos and slightly raised center provide an ergonomic feel and maximum grip in nearly any condition.

SIZE	COLORS	DETAILS	PART #
135mm x 32mm	Blk /Blk	Gel contact with firm Kraton base, smooth, easy on the hands tread	W075-0007

INTRO

TIRES

SADDLES

RIMS

GRIPS

ACCS.

ACCESSORIES

IT'S THE SMALL THINGS...

Don't forget the little guys! They say a new set of tires is the best upgrade you can do to your bike, but you won't get very far without tubeless tape and valves to complete the package. It also just so happens that those TCS valves come in a variety of colors that add flare to your favorite bikes. We hold a lot of faith in tubeless, but it's also not a bad idea to carry a spare tube in case you decide to ride through the cactus rather than around it.



INTRO

TIRES

SADDLES

RIMS

GRIPS

ACCS.



TCS TAPE

11m

66m

USAGES: *Tubeless Systems*

INNER RIM WIDTHS: *i19 · i21 · i23 · i25 · i29 · i35 · i40 · i45*

TCS TAPE DESCRIPTION

Your tubeless system is only as good as your tubeless tape, which is why we make the stickiest, most durable, tape possible. Our 11 meter rolls provide enough length to wrap 5 wheels, while the 66 meter rolls will accommodate 27 wheels – that’s a lot of wheels. No more fumbling about, scraping together odds and ends to tape up a wheel. Both lengths are available in 24, 26, 28, 30, 34, 40, 45 and 50mm widths. Always be sure to use TCS tape that is 5mm wider than the inner width of the rim.

WIDTH	LENGTH	DETAILS	PART #
11m			
24mm	11m	i19 - for 5 wheels	W095-0020
26mm		i21 - for 5 wheels	W095-0021
28mm		i23 - for 5 wheels	W095-0022
30mm		i25 - for 5 wheels	W095-0001
34mm		i29 - for 5 wheels	W095-0041
40mm		i35 - for 5 wheels	W095-0042
45mm		i40 - for 5 wheels	W095-0054
50mm		i45 - for 5 wheels	W095-0043
66m			
24mm	66m	i19 - bulk	W095-0023
26mm		i21 - bulk	W095-0024
28mm		i23 - bulk	W095-0025
30mm		i25 - bulk	W095-0026
34mm		i29 - bulk	W095-0045
40mm		i35 - bulk	W095-0059
45mm		i40 - bulk	W095-0046
50mm		i45 - bulk	W095-0053

INTRO

TIRES

SADDLES

RIMS

GRIPS

ACCS.



INTRO

TIRES

SADDLES

RIMS

GRIPS

ACCS.



NEW

TCS 2.0 FLEX TAPE

11m

33m

USAGES: *Tubeless Systems*

INNER RIM WIDTHS: *i19 · i21 · i23 · i25 · i29 · i35 · i40 · i45*

FLEX TAPE DESCRIPTION

Flex Tape is a thin, pliable tape that is applied over the indestructible Solid Strip to provide an airtight seal between our TCS (Tubeless Compatible System) tires and rims. Installation of Flex Tape is considerably easier than traditional tubeless tape. Flex Tape can only be installed in conjunction with a WTB Solid Strip on a TCS 2.0 rim.

WIDTH	LENGTH	DETAILS	PART #
11m			
24mm	11m	i19 - for 5 wheels	W095-0064
26mm		i21 - for 5 wheels	W095-0065
28mm		i23 - for 5 wheels	W095-0066
30mm		i25 - for 5 wheels	W095-0067
34mm		i29 - for 5 wheels	W095-0068
40mm		i35 - for 5 wheels	W095-0069
45mm		i40 - for 5 wheels	W095-0070
50mm		i45 - for 5 wheels	W095-0071
33m			
24mm	33m	i19 - bulk	W095-0072
26mm		i21 - bulk	W095-0073
28mm		i23 - bulk	W095-0074
30mm		i25 - bulk	W095-0075
34mm		i29 - bulk	W095-0076
40mm		i35 - bulk	W095-0077
45mm		i40 - bulk	W095-0078
50mm		i45 - bulk	W095-0079



NEW

SOLID STRIP

26"

27.5"

29"

USAGES: *Tubeless Systems*

WIDTHS: *11mm · 14mm*

SOLID STRIP DESCRIPTION

Narrower and more durable rim strip that sits in the rim bed to eliminate any possibility of a broken spoke puncturing the tubeless tape and causing the system to lose air. Solid Strip prevents tubeless tape from sagging at the spoke holes, which ensures a smooth surface between the tire and rim, prevents air from escaping during installation and makes it considerably easier to mount tubeless tires using only a floor pump. Installation of the Solid Strip allows for application of Flex Tape, which makes tubeless tape installation much easier.



DIAMETER	WIDTH	PART #
26"		
26"	11mm	W095-0080
26"	14mm	W095-0083
27.5"		
27.5"	11mm	W095-0081
27.5"	14mm	W095-0084
29"		
29"	11mm	W095-0082
29"	14mm	W095-0085

INTRO

TIRES

SADDLES

RIMS

GRIPS

ACCS.



NEW

TCS VALVES

34mm

46mm

USAGES: *Tubeless Systems*

LENGTHS: *34mm • 46mm*

VALVE DESCRIPTION

Our TCS AL valves make your bike look cooler, so you should buy them. They also shed grams, come in catchy anodized red, orange, green, black, or blue, and are available in 34 and 46mm lengths for various rim depths. A stepped lock nut further adds compatibility among various drillings and a smooth pump interface and removable core make setting beads a cinch. Add some bling to your fancy wheels with TCS AL valves.

COLOR	LENGTH	DETAILS	PART #
34mm			
NEW Green	34mm	Presta Valve - 2 pieces (pair)	W095-0049
NEW Orange			W095-0061
Black			W095-0005
Red			W095-0006
Blue			W095-0007
46mm			
NEW Green	46mm	Presta Valve - 2 pieces (pair)	W095-0050
NEW Orange			W095-0062
Black			W095-0008
Red			W095-0009
Blue			W095-0010

INTRO
TIRES
SADDLES
RIMS
GRIPS
ACCS.



TUBES

26"

27.5"

29"

700c

USAGES: *Tube Type Tires*

VALVE: *Presta*

TUBE DESCRIPTION

Inner tubes of all sizes to fit every bike in your quiver. Durable enough to keep you rolling, yet light enough to not feel overly cumbersome in your jersey pocket. All inner tubes feature a Presta valve. Don't want to deal with tubes any longer? TCS sealant-based tubeless will change your riding experience.

DIAMETER	WIDTH	DETAILS	PART #
26"			
26"	1.5-2.2"	Presta - 34mm valve	W095-0064
26"	2.3-2.5"	Presta - 34mm valve	W095-0065
27.5"			
27.5"	1.9-2.3"	Presta - 34mm valve	W095-0067
27.5"	2.8-3.0"	Presta - 34mm valve	W095-0068
29"			
29"	1.9-2.3"	Presta - 34mm valve	W095-0070
700c			
700c	i18-i25	Presta - 34mm valve	W095-0072
700c	i18-i25	Presta - 48mm valve	W095-0073
700c	i28-i38	Presta - 34mm valve	W095-0074
700c	i28-i38	Presta - 48mm valve	W095-0075
700c	i38-i45	Presta - 34mm valve	W095-0076

INTRO

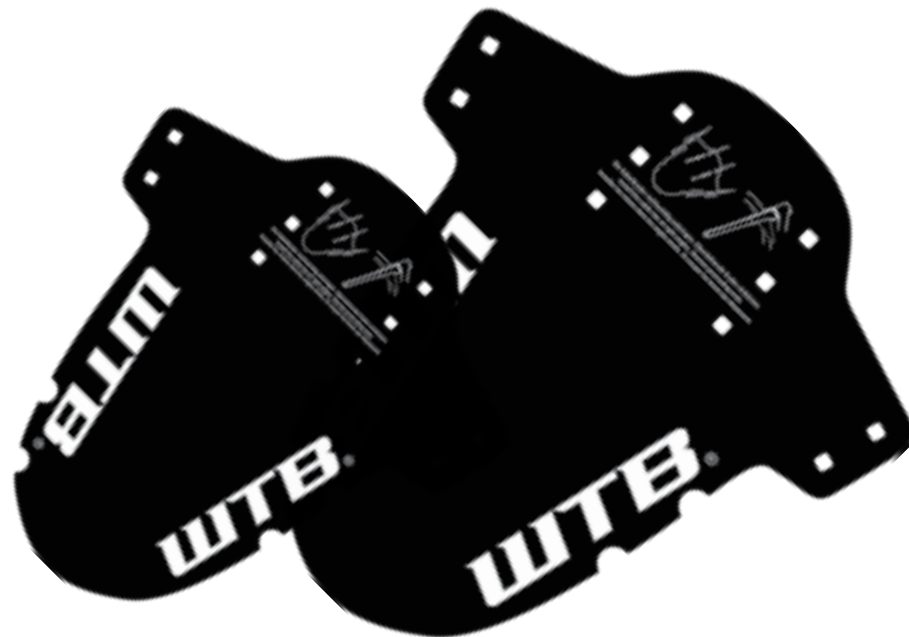
TIRES

SADDLES

RIMS

GRIPS

ACCS.



MUD GUARD

GRAVEL

MTB

USAGES: *Shredding Through Muck*

CONDITIONS: *SLOPPY!*

MUD GUARD DESCRIPTION

Tacky trails and damp roads, they're what dreams are made of. That doesn't mean we want our faces plastered with the muck that comes along with them. Using nothing more than a handful of zip ties, our minimalistic mud guards attach to your fork in less than a minute to keep your vision free of mud and focused on the turn ahead.



SIZE	PART #
GRAVEL	
Mud Guard - Gravel or cyclocross bike specific	W070-0036
MTB	
Mud Guard - Mountain bike specific	W070-0035



OOPS! SHOULD HAVE HAD A MUD GUARD!

#RIDEWTB



SINCE 1982

OUR COMMITMENT

As a provider of products that encourage users to get out there and explore, we would be doing a disservice to the world if we weren't doing our part to minimize our global footprint for future generations. Our product development team is committed to the usage of increasingly eco-friendly materials in our products as a means of minimizing the impact they will have on the world. We spend our weekends recreating on a planet that is becoming more fragile by the day, so why wouldn't we spend our workweek being empathetic to its needs?





WTB USA

475 Miller Avenue Mill Valley, CA
94941, USA
Tel: +1 415 389 5040
Fax: +1 415 389 5044
Email: info@wtb.com

WTB EUROPE

Perlová 69/9
Plzeň
Czech Republic
Phone: +420 377 224 044
Email: europe@wtb.com

WTB CHINA

Area B, the 1st floor, No. 6 building, Xinyongfeng
Industrial Park, the 4th Industrial District of Shuitian,
Shiyan, Baoan New District, Shenzhen, China
Postcode: 518108
Tel: 13902989430
Email: hchen@wtb.com

FOLLOW US ONLINE

-  facebook.com/wildernesstrailbikes
-  twitter.com/W_T_B
-  instagram.com/wildernesstrailbikes