

# WobiOffice

## Robin Series Assembly Instructions



**Seat**



**Mechanism**



**Gas Lift**



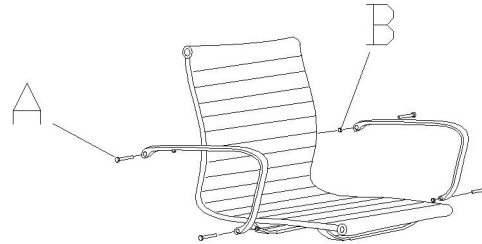
**Base**



**Casters**

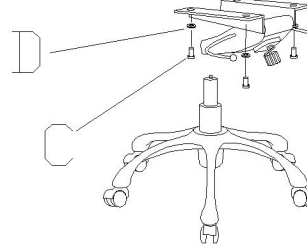


**Armrests**



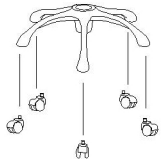
### Step 3

**Attach armrests to seat**



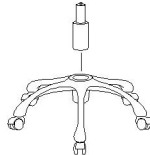
### Step 4

**Attach knee-tilt  
mechanism to the base  
of the seat body**



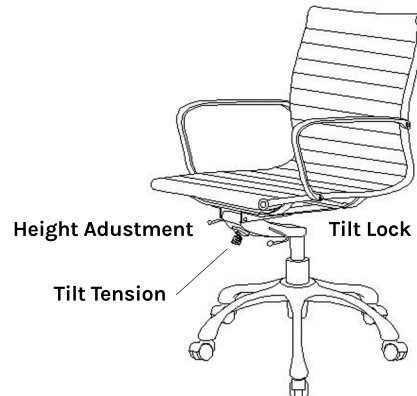
### Step 1

**Install casters onto base**



### Step 2

**Insert gas lift into hoster  
at the center of the base**



### Step 5

**Enjoy your Wobi Chair!**

**Finished product**