



BAYLOR II

BILLIARD TABLE

A table designed for the "Modern/Rustic World" The Baylor II will be the center of attention for anyone's home. It features: sleek 5" x 5" hardwood legs, enclosed pockets, and 6" wide top rails. Hardwood construction will make this a prize piece that will last for generations.



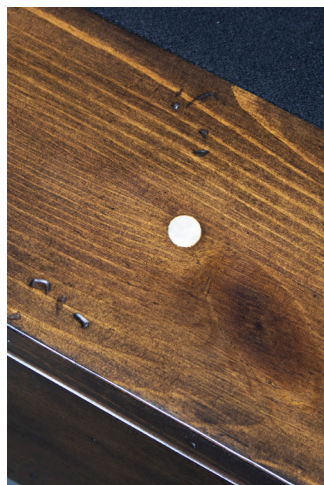
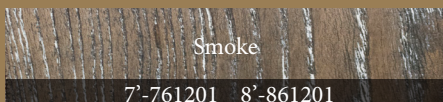
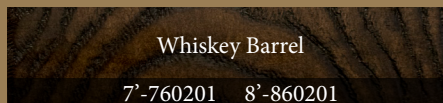
- All Wood Cabinet
- 3-Piece, 1" Backed Slate
- ExactShot™ Cushions
- Solid Hardwood Rails
- Stainless Steel Sights
- Industry Leading Warranty

*Shown in Gunshot finish
Available in 7-foot, or 8-foot.*

Assembled Dimensions:

7': 91 1/2" x 52 1/2" x 31" @ 600 lbs

8': 101 1/2" x 57 1/2" x 31" @ 700 lbs



Optional Dining Top

Optional Dining Top and Seating Benches are available to complete the table conversion that will seat up to 8 of your family and friends.

See the Accessories Section for more information about the Billiard Dining Top.

