



**BEN  
SEN**

Fabrics & Leathers

2020

# BENSEN Fabrics & Leathers

Category	Cut Lengths (Stocked in Europe)
<p style="text-align: center;"><b>A</b></p>	<p>P 4 House Leather P 5 Prescott (Leather) P 6 Toscano (Leather A, Tokyo only) (Leather B, Stax only)</p>
<p style="text-align: center;"><b>B</b></p>	<p>P 8 Acquario (Leather)(Except U Turn, Lo Turn, My Turn, Pre &amp; Hi Turn) P 9 Cashmere (Leather)(*New) P 10 - 13 Elmosoft IX (Leather) P 14 - 15 Elmonordic IV (Leather) P 16 Lord (Leather) P 17 Sahara (Leather) P 18 Barbat P 19 Chanel P 20 - 21 Lecco (*New) P 22 Optim</p>
<p style="text-align: center;"><b>C</b></p>	<p>P 24 Acker P 25 Como (*New) P 26 - 27 Decor (*New) P 28 - 29 Donnafugata Soft P 30 Flex (*New) P 31 - 33 Gaja Classic (Gabriel) P 34 Jojo (*New) P 35 Sobral P 36 Tundra 01 P 37 - 38 Wilde P 39 - 40 Wilde 01</p>
<p style="text-align: center;"><b>D</b></p>	<p>P 42 - 43 Barnum (*New) P 44 - 45 Credo (Rohi)(*New) P 46 - 47 Esopo 01 (*New) P 48 - 50 Europost 2 (Gabriel) P 51 - 52 Everest (*New) P 53 - 54 Katmandu P 55 - 56 Luna 2 (Gabriel) P 57 - 58 Maple (Kvadrat) P 59 - 60 Mica (Rohi)(*New) P 61 - 62 Nobilis P 63 - 64 Novum (Rohi)(*New) P 65 - 66 Opera (Rohi)(*New) P 67 - 68 Sera (Rohi)(*New) P 69 - 70 Shake (Rohi)(*New) P 71 - 72 Topia (Rohi)(*New)</p>

# BENSEN Fabrics & Leathers

Category	Cut Lengths (Stocked in Europe)
E	P 74 - 76 Divina 3 (Kvadrat) P 77 - 78 Divina MD (Kvadrat) P 79 - 80 Divina Melange 3 (Kvadrat) P 81 - 82 Harald 3 (Kvadrat) P 83 - 84 Savana (Kvadrat)
F	P 86 - 89 Gabriel: Comfort+

**Category**

**A**



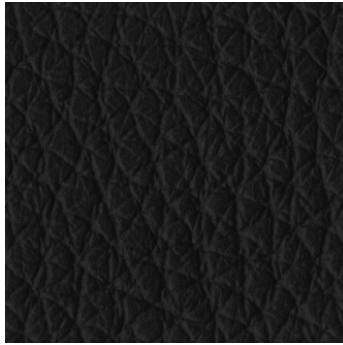
7763



7738



7060



7150

# House Leather

## TECHNICAL PROPERTIES

PROPERTIES	VALUE
Thickness	1.4 - 1.6 mm
Leather type	Pigmented - corrected grain through dyed aniline
Raw Material	Chrome tanned raw hides with European origin

Category





Turtledove 209



Gray Shadow 211



Peatmoss 217



Black Ink 207

# Prescott

(Leather)

## TECHNICAL PROPERTIES

PROPERTIES	VALUE
Thickness	1.2 - 1.4 mm
Leather type	Through dyed - finishing with resins and pigments
Raw Material	Natural corrected grain bovine leather

Category





Natural



Honey



Brown



Black

---

# Toscano

(Leather, Tokyo and Stax only)

Category



Category A for Tokyo

Category



Category B for Stax

**Category**

**B**





Polvere



Fango



Antracite



Collant



Cuio



Marrone



T. moro

## Acquario (Leather)

### TECHNICAL PROPERTIES

PROPERTIES	VALUE
Thickness	1.0 - 1.2 mm
Leather Types	Aniline - full grain - through dyeing aniline
Raw Material	European raw hides

Category





Sabbia



Biscotto



Cuio



Taupe



Ebano



Castagna



Ferro



Nero

# Cashmere (Leather)

## TECHNICAL PROPERTIES

Category



PROPERTIES	VALUE
Thickness	1.2 - 1.4 mm
Leather Types	Semi aniline - Full grain Aniline through dyed
Raw Material	Chrome tanned bovine raw hides



# elmosoft IX

(Leather)

## TECHNICAL PROPERTIES

Category



PROPERTIES	VALUE
Thickness	1.1 - 1.3 mm
Leather Types	Semi-Aniline leather
Raw Material	Grain leather from Scandinavian cattle



# elmosoft IX

(Leather)

## TECHNICAL PROPERTIES

Category



PROPERTIES	VALUE
Thickness	1.1 - 1.3 mm
Leather Types	Semi-Aniline leather
Raw Material	Grain leather from Scandinavian cattle



# elmosoft IX

(Leather)

## TECHNICAL PROPERTIES

Category



PROPERTIES	VALUE
Thickness	1.1 - 1.3 mm
Leather Types	Semi-Aniline leather
Raw Material	Grain leather from Scandinavian cattle



75011



05029



66006



46053



05145



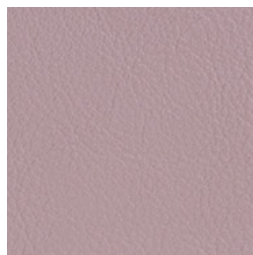
95006



75010



75014



16003



16377

# elmosoft IX

(Leather)

## TECHNICAL PROPERTIES

PROPERTIES	VALUE
Thickness	1.1 - 1.3 mm
Leather Types	Semi-Aniline leather
Raw Material	Grain leather from Scandinavian cattle

Category





# Elmonordic IV

(Leather)

## TECHNICAL PROPERTIES

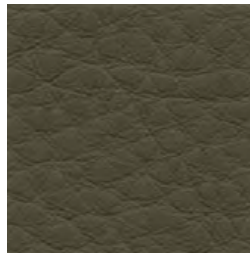
Category



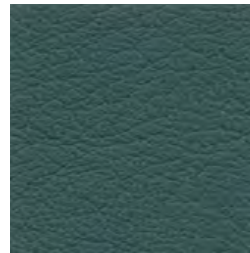
PROPERTIES	VALUE
Thickness	1.3 - 1.5 mm
Leather Types	Semi-Aniline leather
Raw Material	Grain leather from Scandinavian cattle



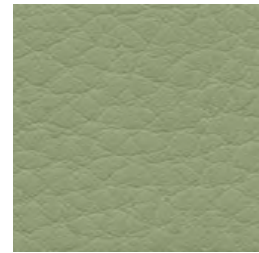
87007



98027



88035



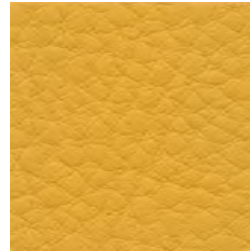
18014



01038



43044



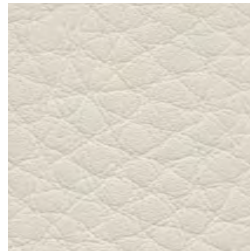
44013



02071



02064



00385

## Elmonordic IV

(Leather)

### TECHNICAL PROPERTIES

Category



PROPERTIES	VALUE
Thickness	1.3 - 1.5 mm
Leather Types	Semi-Aniline leather
Raw Material	Grain leather from Scandinavian cattle





9000



9320



9010



9340



9230



9250



9120



9270



9280



9180



9190



9300

## Lord (Leather)

### TECHNICAL PROPERTIES

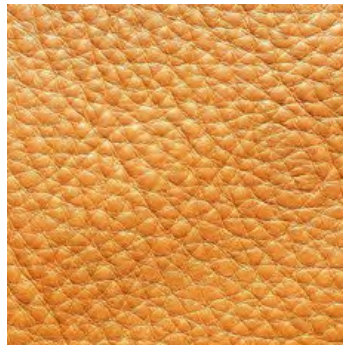
PROPERTIES	VALUE
Thickness	1.3 - 1.5 mm
Leather Types	Aniline - full grain - through dyeing aniline
Raw Material	European raw hides

Category





Gray



Tan



Brown



Black

# Sahara

(Leather)

Category

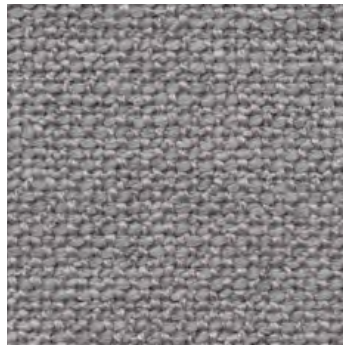


## TECHNICAL PROPERTIES

PROPERTIES	VALUE
Thickness	1.4~1.6 mm
Leather Types	Semi-Aniline leather



18



16



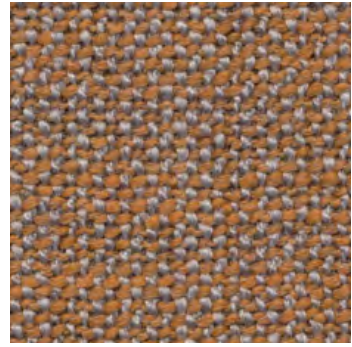
14



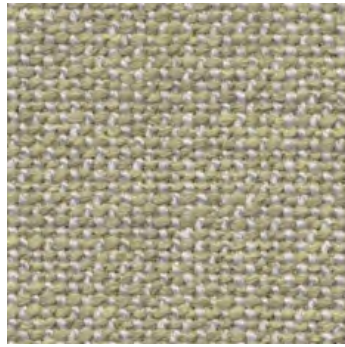
12



24



2








4



7

# Barbat

## TECHNICAL PROPERTIES

PROPERTIES	VALUE
Composition	41% Acrylic 38% Polyester 21% Cotton
Weight	762 g/ml
Martindale	40,000
Fabric care instruction	    

Category





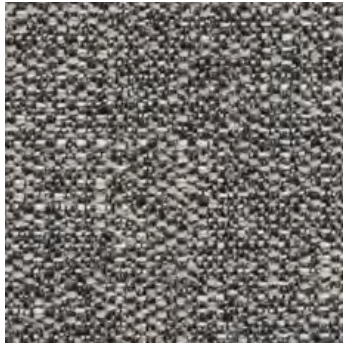
07



10



45



51



52



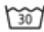



53



70

# Chanel

## TECHNICAL PROPERTIES

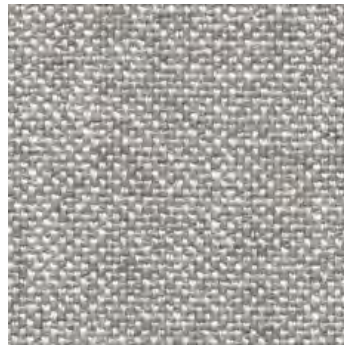
PROPERTIES	VALUE
Composition	48% Polyester 32% Polypropylene 20% Cotton
Weight	695 g/ml
Martindale	26,000
Fabric care instruction	   

Category





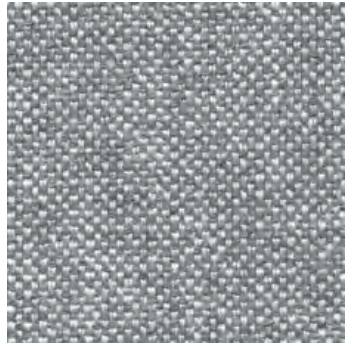
200



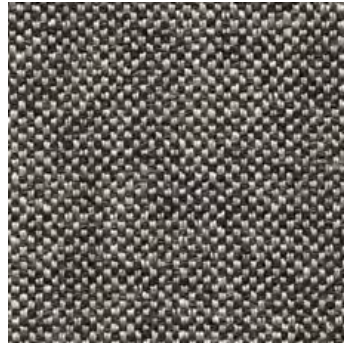
02



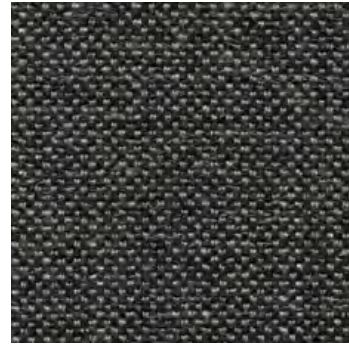
205



232



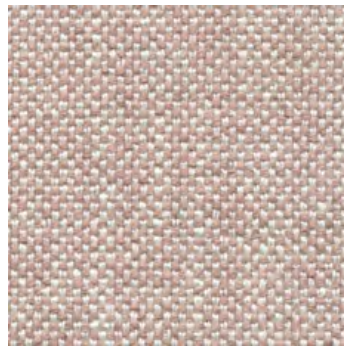
233



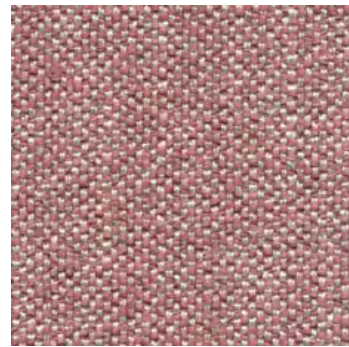
119



221



03



237

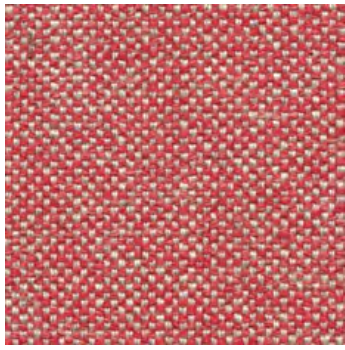
# Lecco

## TECHNICAL PROPERTIES

PROPERTIES	VALUE
Composition	30% Viscose 27% Acrylic 19% Linen 14% Cotton 10% Polyester
Weight	770 g/ml
Martindale	25,000
Fabric care instruction	

Category

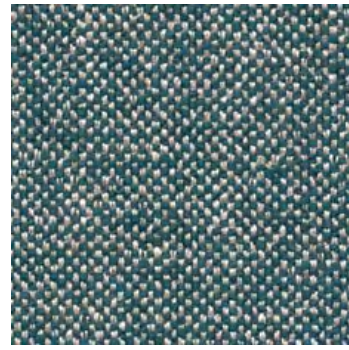




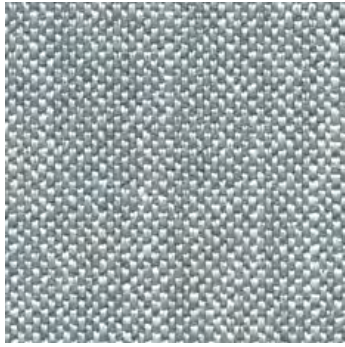
224



214



225



04



234



126

# Lecco

## TECHNICAL PROPERTIES

PROPERTIES	VALUE
Composition	30% Viscose 27% Acrylic 19% Linen 14% Cotton 10% Polyester
Weight	770 g/ml
Martindale	25,000
Fabric care instruction	

Category





05



07



54



52








53



48

# Optim

## TECHNICAL PROPERTIES

PROPERTIES	VALUE
Composition	56% Polyester 36%Linen 8% Cotton
Weight	800 g/ml
Martindale	25,000
Fabric care instruction	    

Category



**Category**

**C**





1/2



1/6



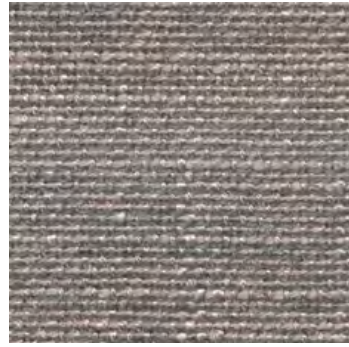
5/3



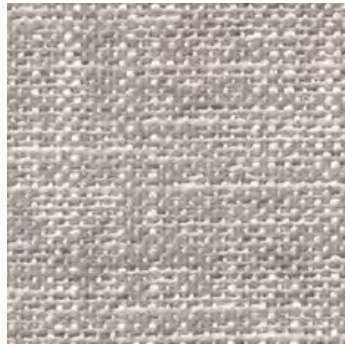
6/1



6/2



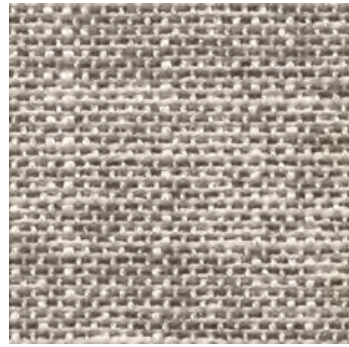
5/4



1/5








1/3



1/24

# Acker

## TECHNICAL PROPERTIES

PROPERTIES	VALUE
Composition	59% Viscose 8% Linen 33% Cotton
Weight	975 g/ml
Martindale	35,000
Fabric care instruction	    

Category

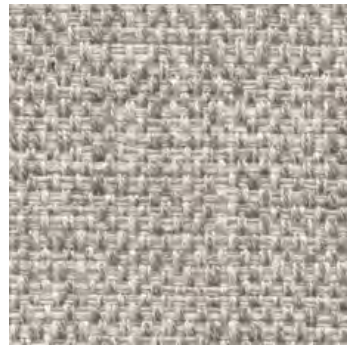




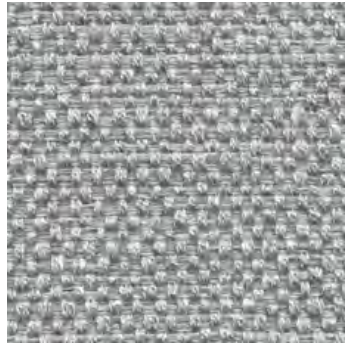
01



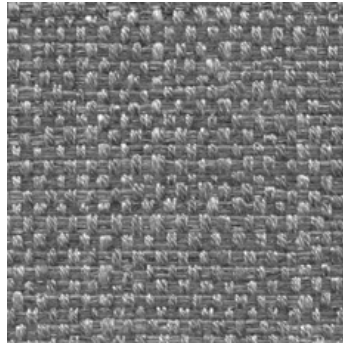
02



03



05



06



07



13








11



08

# Como

## TECHNICAL PROPERTIES

PROPERTIES	VALUE
Composition	46% Cotton 36% Viscose 18% Linen
Weight	940 g/ml
Martindale	20,000
Fabric care instruction	    

Category





0076



8033



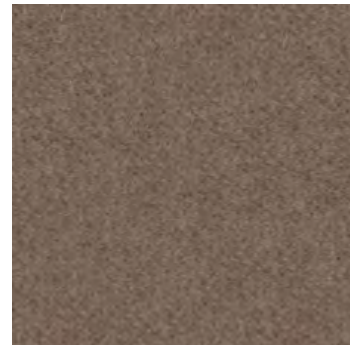
0895



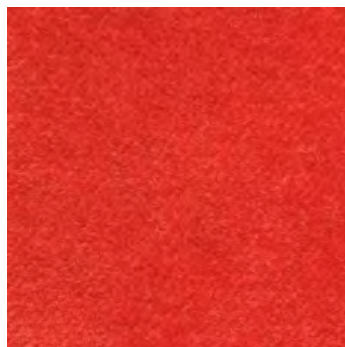
0164



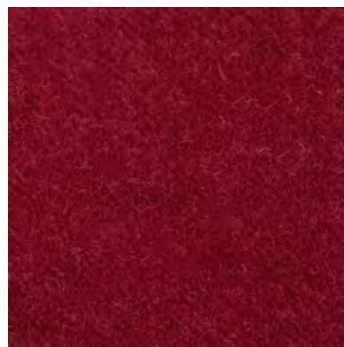
0157



0056



0256



0371



0564

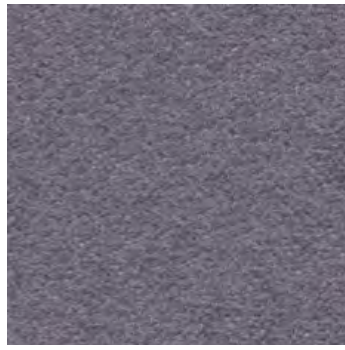
## Decor (Velvet)

### TECHNICAL PROPERTIES

PROPERTIES	VALUE
Composition	100% Cotton
Weight	555 g/ml
Martindale	40,000
Fabric care instruction	

Category





0856



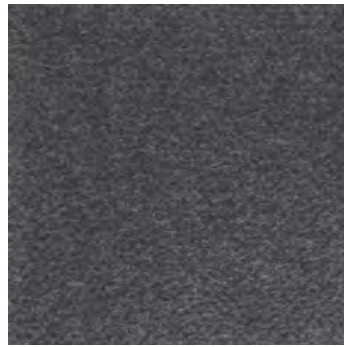
0597



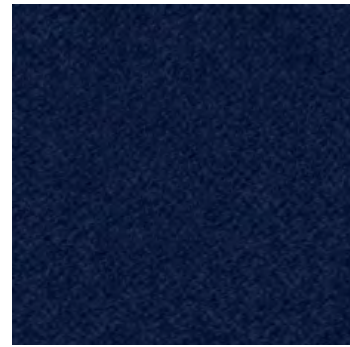
0859



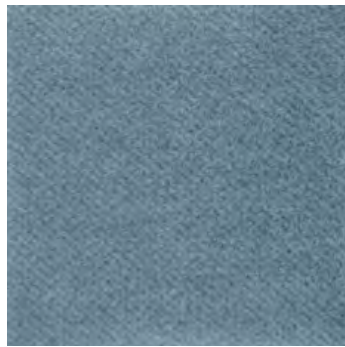
8038



0881



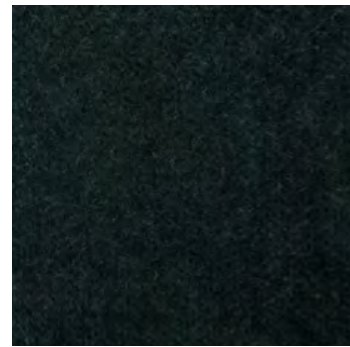
0692



6029



0615



0785

## Decor (Velvet)

### TECHNICAL PROPERTIES

PROPERTIES	VALUE
Composition	100% Cotton
Weight	555 g/ml
Martindale	40,000
Fabric care instruction	

Category





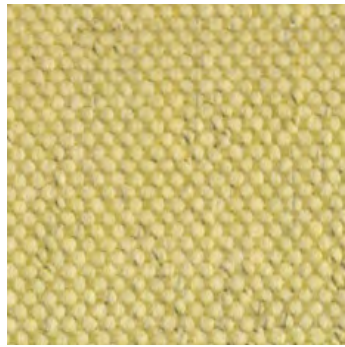
01



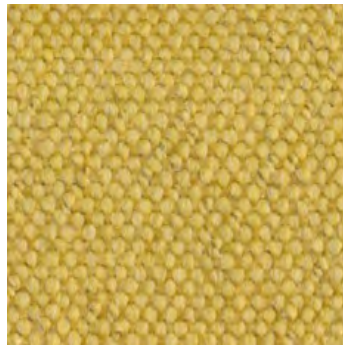
166



444



20



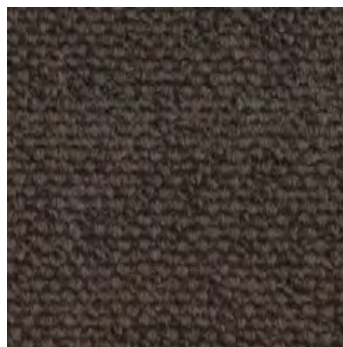
21



15



445








443



11

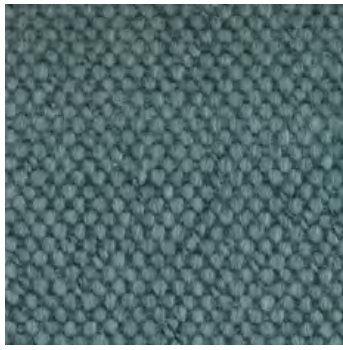
# Donnafugata Soft

## TECHNICAL PROPERTIES

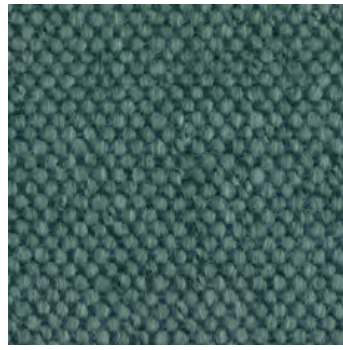
PROPERTIES	VALUE
Composition	40% Viscose 35% Acrylic 15% Cotton 10% Polyester
Weight	950 g/ml
Martindale	50,000
Fabric care instruction	    

Category





12



22



16



168



13



17



18



14



19

# Donnafugata Soft

## TECHNICAL PROPERTIES

PROPERTIES	VALUE
Composition	40% Viscose 35% Acrylic 15% Cotton 10% Polyester
Weight	950 g/ml
Martindale	50,000
Fabric care instruction	

Category





01



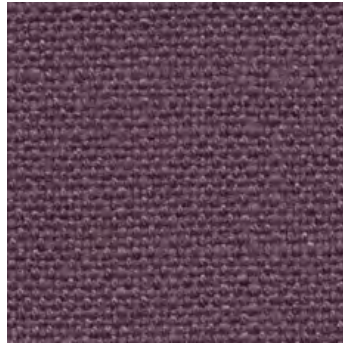
02



03



04



05



06



07



08

# Flex

## TECHNICAL PROPERTIES

PROPERTIES	VALUE
Composition	52% Viscose 25% Linen 23% Cotton
Weight	1020 g/ml
Martindale	19,000
Fabric care instruction	

Category





# Gaja Classic

## TECHNICAL PROPERTIES

PROPERTIES	VALUE
Composition	100% Wo
Weight	530 g/ml
Martindale	50,000
Fabric care instruction	

Category







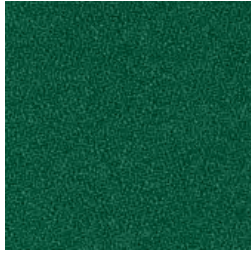
# Gaja Classic

## TECHNICAL PROPERTIES

PROPERTIES	VALUE
Composition	100% Wool
Weight	530 g/ml
Martindale	50,000
Fabric care instruction	

Category





68048

# Gaja Classic

## TECHNICAL PROPERTIES

PROPERTIES	VALUE
Composition	100% Wool
Weight	530 g/ml
Martindale	50,000
Fabric care instruction	

Category





# Jojo

## TECHNICAL PROPERTIES

PROPERTIES	VALUE
Composition	65% Cotton 25% Acrylic 10% Polyester
Weight	750 g/ml
Martindale	20,000
Fabric care instruction	

Category

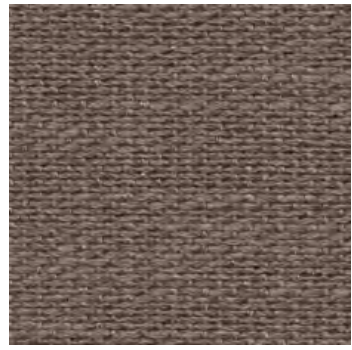




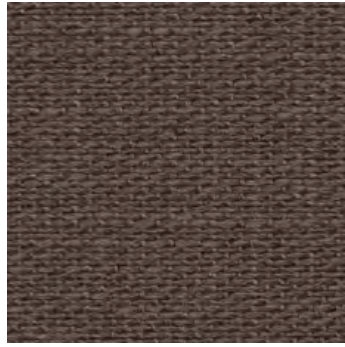
13



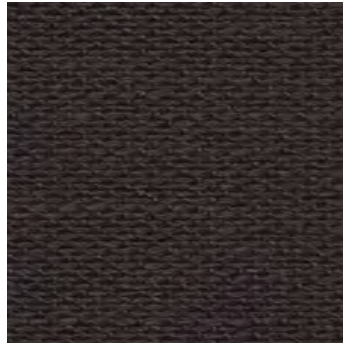
01



04



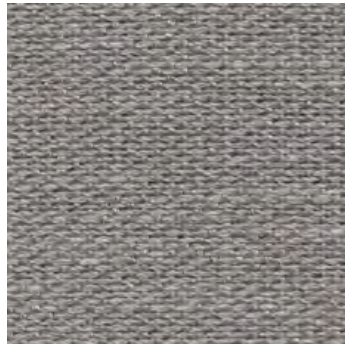
05



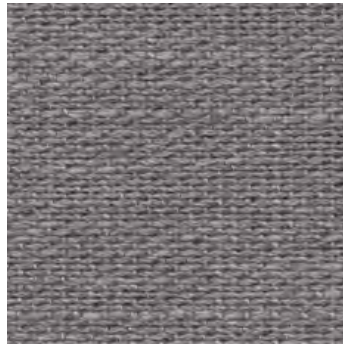
11



02



12








06



09

# Sobral

## TECHNICAL PROPERTIES

PROPERTIES	VALUE
Composition	21% Cotton 53% Viscose 24% Linen 2% Polyamide
Weight	957 g/ml
Martindale	50,000
Fabric care instruction	    

Category





07



03



04



05



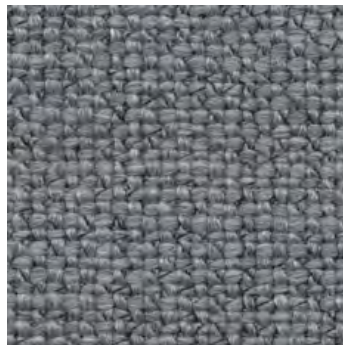
06



12



11



10



08

# Tundra 01

## TECHNICAL PROPERTIES

PROPERTIES	VALUE
Composition	38% Cotton 42% Viscose 14% Polyacryl 6% Polyester
Weight	1022 g/ml
Martindale	30,000
Fabric care instruction	

Category





01



1/31



1/1



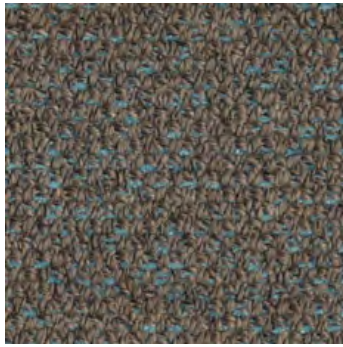
21



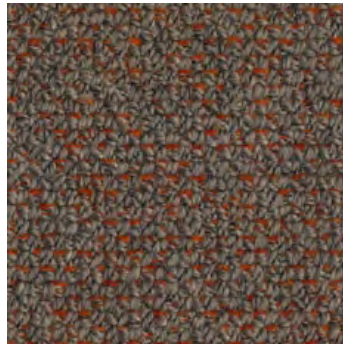
22/19



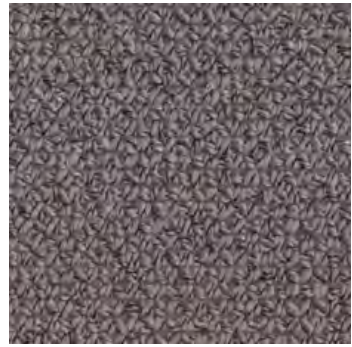
24/5



23/1



23/15



31

# Wilde

## TECHNICAL PROPERTIES

PROPERTIES	VALUE
Composition	36% Cotton 26% Acrylic 16% Viscose 10% Polyamid 7% Wool 5% Linen
Weight	941 g/ml
Martindale	30,000
Fabric care instruction	

Category





24



23/100

# Wilde

## TECHNICAL PROPERTIES

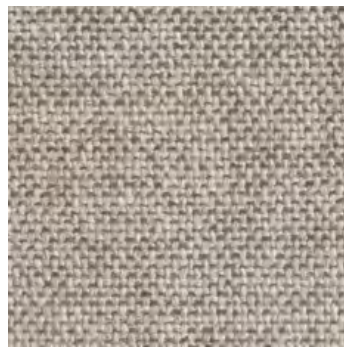
PROPERTIES	VALUE
Composition	36% Cotton 26% Acrylic 16% Viscose 10% Polyamid 7% Wool 5% Linen
Weight	941 g/ml
Martindale	30,000
Fabric care instruction	

Category

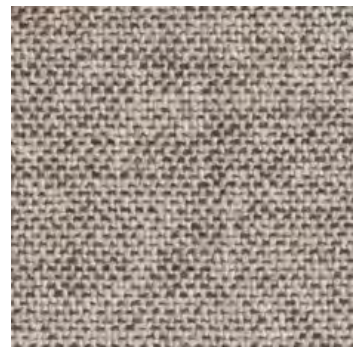




01



1/31



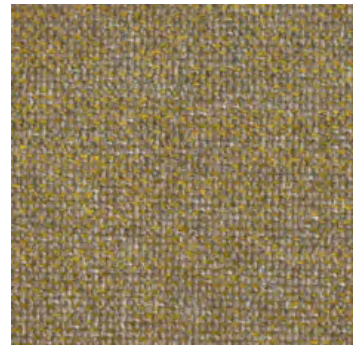
1/1



21



22



22/18



22/19



24/5



23/1

# Wilde 01

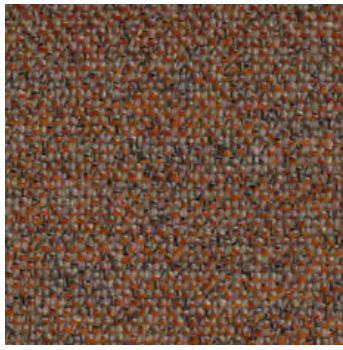
## TECHNICAL PROPERTIES

PROPERTIES	VALUE
Composition	36% Cotton 26% Acrylic 16% Viscose 10% Polyamid 7% Wool 5% Linen
Weight	915 g/ml
Martindale	35,000
Fabric care instruction	

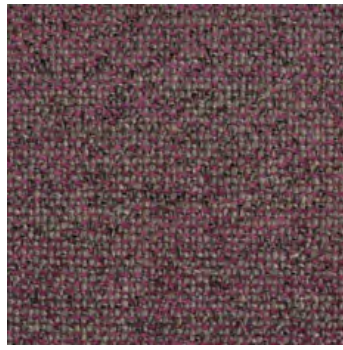
Category



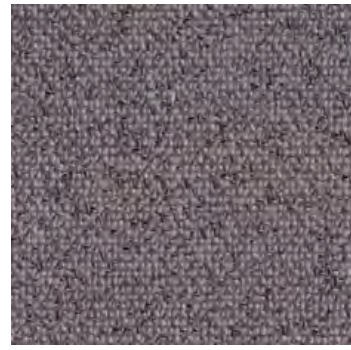




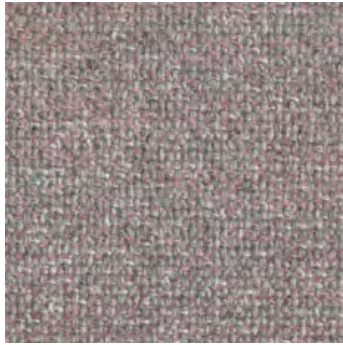
23/15



23/16



31



24/1



24



23/100

# Wilde 01

## TECHNICAL PROPERTIES

PROPERTIES	VALUE
Composition	36% Cotton 26% Acrylic 16% Viscose 10% Polyamid 7% Wool 5% Linen
Weight	915 g/ml
Martindale	35,000
Fabric care instruction	

Category

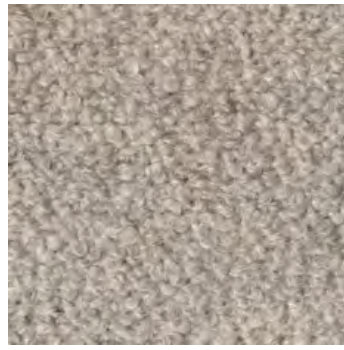


**Category**

**D**



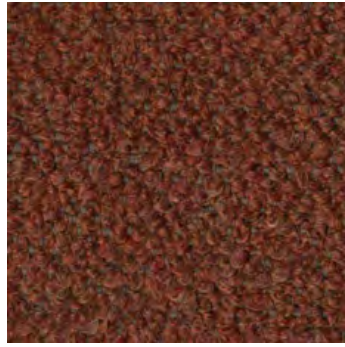
24



02



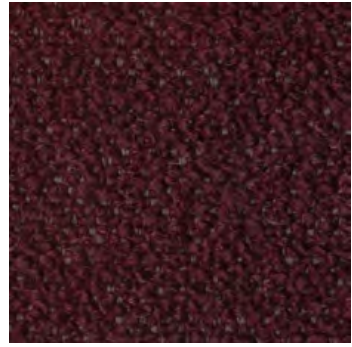
21



23



18



22



09








08



07

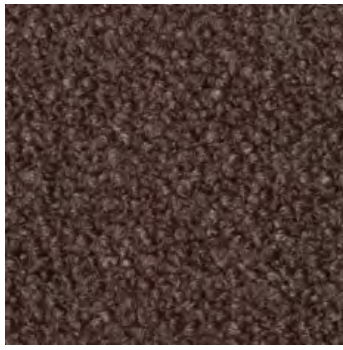
# Barnum

## TECHNICAL PROPERTIES

PROPERTIES	VALUE
Composition	45% Cotton 15% Wool 13% Acetate 19% Viscose 8% Nylon
Weight	950 g/ml
Martindale	60,000
Fabric care instruction	    

Category





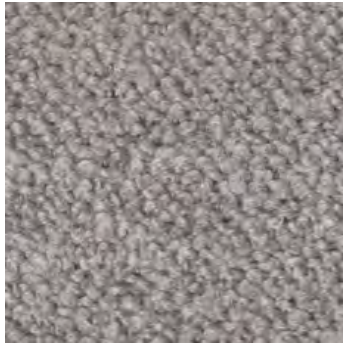
11



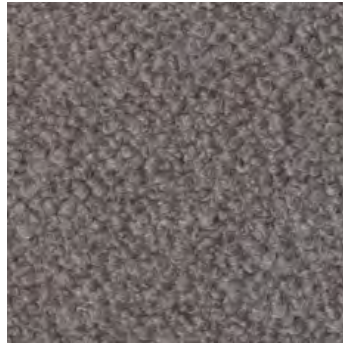
19



16



14



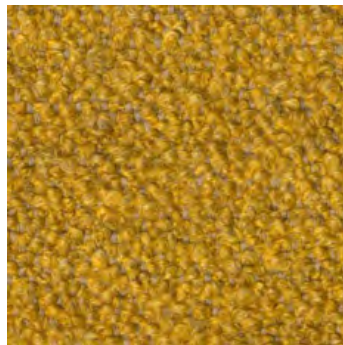
12



13



03



06

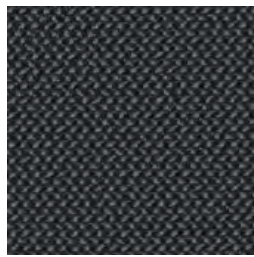
# Barnum

## TECHNICAL PROPERTIES

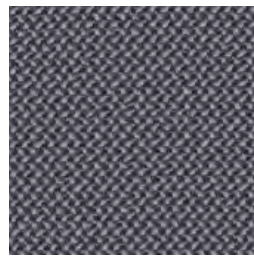
PROPERTIES	VALUE
Composition	45% Cotton 15% Wool 13% Acetate 19% Viscose 8% Nylon
Weight	950 g/ml
Martindale	60,000
Fabric care instruction	

Category

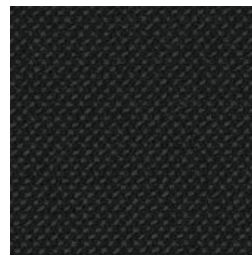




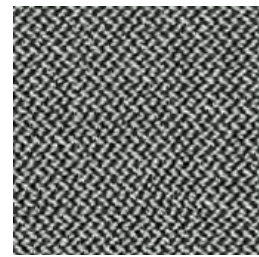
Asphalt



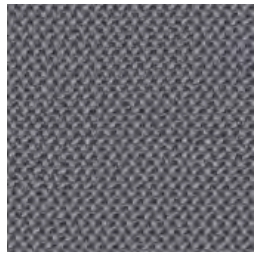
Carbon



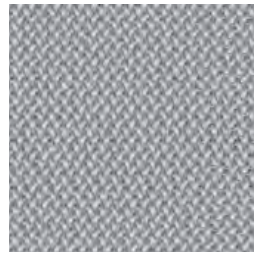
Black



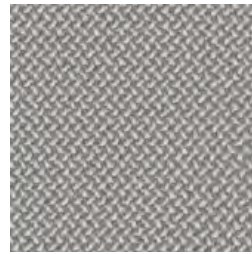
Pepper



Fels



Chalk



Zinn



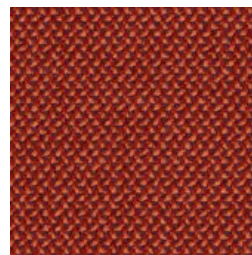
Aureo



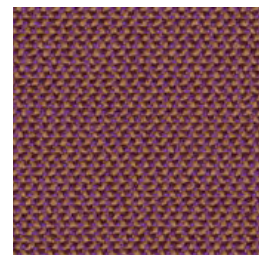
Diamond



Kupfer



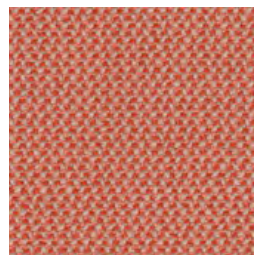
Lampion



Breva



Rubin



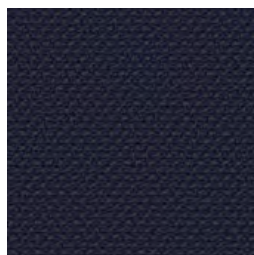
Grapefruit



Sea



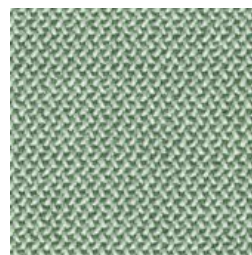
Lake



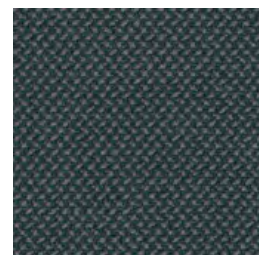
Navy



Forest






Aloe



Jaspis

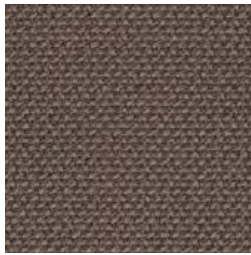
# Credo

## TECHNICAL PROPERTIES

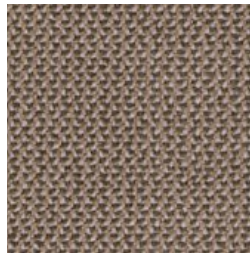
PROPERTIES	VALUE
Composition	95% Virgin Wool 5% Polyamid
Weight	870 g/ml
Martindale	100,000
Fabric care instruction	  

Category

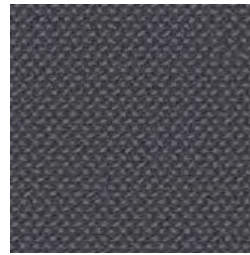




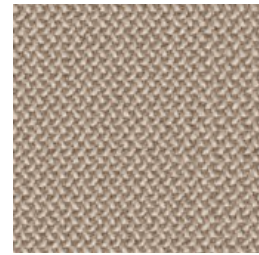
Walnut



Fango



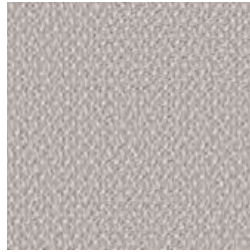
Schiefer



Macadamia



Taupe






Calla



Snow

# Credo

## TECHNICAL PROPERTIES

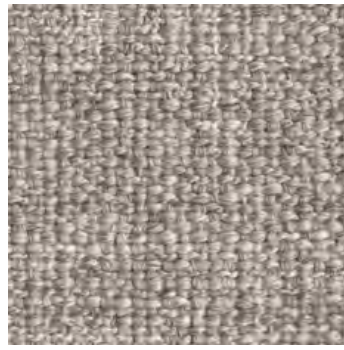
PROPERTIES	VALUE
Composition	95% Virgin Wool 5% Polyamid
Weight	870 g/ml
Martindale	100,000
Fabric care instruction	  

Category

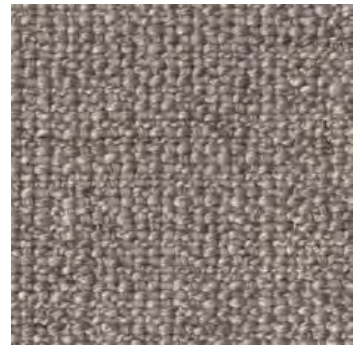




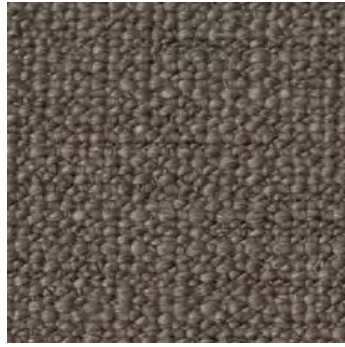
01



02



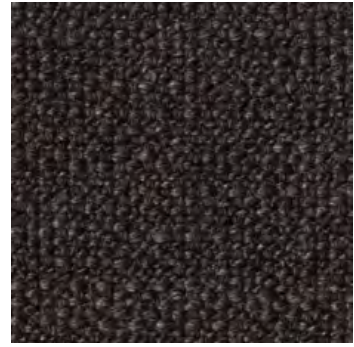
03



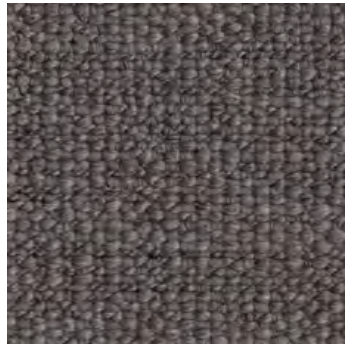
05



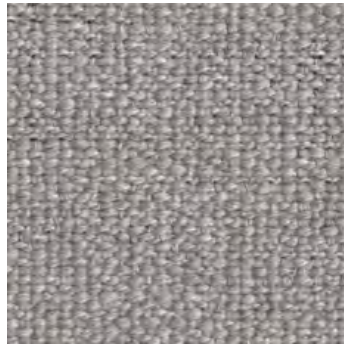
10



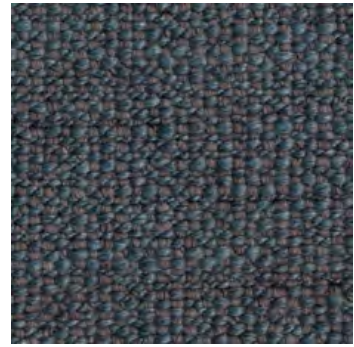
09



08



04



8/1

# Esopo 01

## TECHNICAL PROPERTIES

PROPERTIES	VALUE
Composition	33% Acrylic 25% Viscose 17% Wool 14% Polyester 11% Cotton
Weight	1120 g/ml
Martindale	30,000
Fabric care instruction	

Category






9/1

# Esopo 01

## TECHNICAL PROPERTIES

PROPERTIES	VALUE
Composition	33% Acrylic 25% Viscose 17% Wool 14% Polyester 11% Cotton
Weight	1120 g/ml
Martindale	30,000
Fabric care instruction	

Category







# Europost 2

## TECHNICAL PROPERTIES

PROPERTIES	VALUE
Composition	100% Wool
Weight	800 g/ml
Martindale	50,000
Fabric care instruction	





# Europost 2

## TECHNICAL PROPERTIES

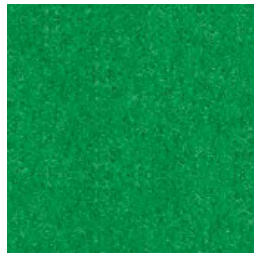
PROPERTIES	VALUE
Composition	100% Wool
Weight	800 g/ml
Martindale	50,000

Fabric care instruction



Category

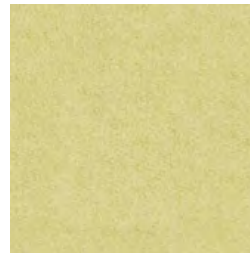




68030



68126



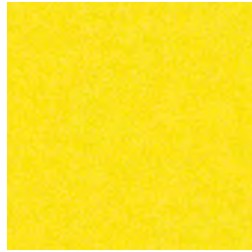
68127



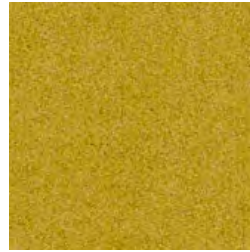
68128



62061



62060



68072



68003

## Europost 2

### TECHNICAL PROPERTIES

PROPERTIES	VALUE
Composition	100% Wool
Weight	800 g/ml
Martindale	50,000
Fabric care instruction	    

Category





# Everest

## TECHNICAL PROPERTIES

PROPERTIES	VALUE
Composition	75% Wool 15% Alpaca 10% Polyamid
Weight	735 g/ml
Martindale	130,000
Fabric care instruction	

Category






605

# Everest

## TECHNICAL PROPERTIES

PROPERTIES	VALUE
Composition	75% Wool 15% Alpaca 10% Polyamid
Weight	735 g/ml
Martindale	130,000
Fabric care instruction	

Category

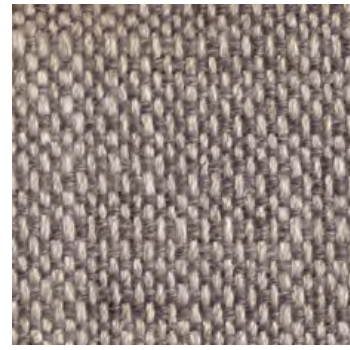




01



1/1



1/3



1/6



1/7



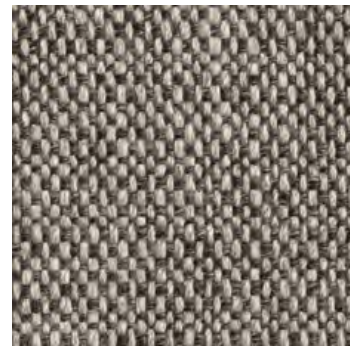
1/8



1/11



1/12



1/13

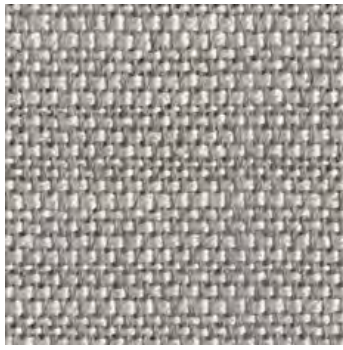
# Katmandu

## TECHNICAL PROPERTIES

PROPERTIES	VALUE
Composition	36% Viscose 32% Linen 24% Acrylic 4% Polyamid 4% Polyester
Weight	1051 g/ml
Martindale	25,000
Fabric care instruction	

Category





3/2



1/15



3/3

# Katmandu

## TECHNICAL PROPERTIES

PROPERTIES	VALUE
Composition	36% Viscose 32% Linen 24% Acrylic 4% Polyamid 4% Polyester
Weight	1051 g/ml
Martindale	25,000
Fabric care instruction	

Category





## Luna 2

### TECHNICAL PROPERTIES

PROPERTIES	VALUE
Composition	90% Wool 10% Polyamide
Weight	680 g/ml
Martindale	70,000
Fabric care instruction	

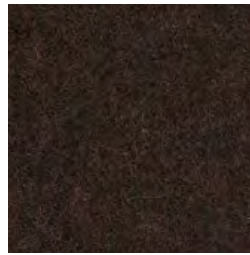
Category







4111



4104



4204








4101



4102

# Luna 2

## TECHNICAL PROPERTIES

PROPERTIES	VALUE
Composition	90% Wool 10% Polyamide
Weight	680 g/ml
Martindale	70,000
Fabric care instruction	    

Category





# Maple

## TECHNICAL PROPERTIES

PROPERTIES	VALUE
Composition	81% Viscose 15% Linen 4% Polyester
Weight	850 g/ml
Martindale	30,000
Fabric care instruction	





0732



0742



0762



0792



0832



0862

# Maple

## TECHNICAL PROPERTIES

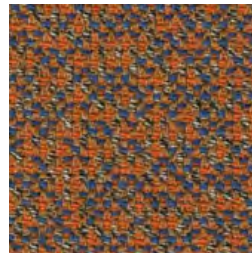
PROPERTIES	VALUE
Composition	81% Viscose 15% Linen 4% Polyester
Weight	850 g/ml
Martindale	30,000
Fabric care instruction	

Category

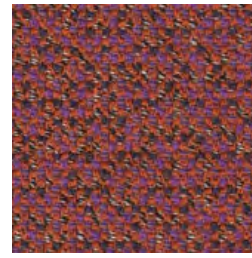




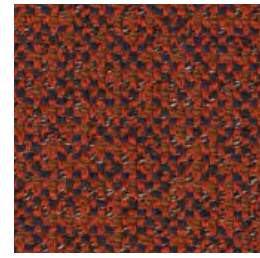
Melba



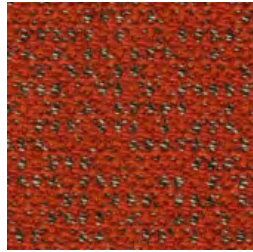
Sanddorn



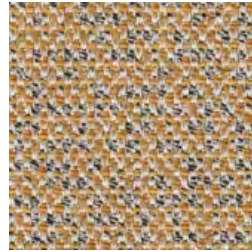
Breva



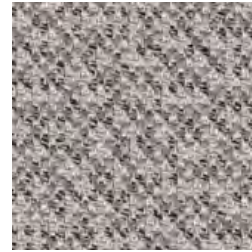
Indio



Glow



Corn



Mirror



Flanell



Calla



Aqua



Papillon



Reseda



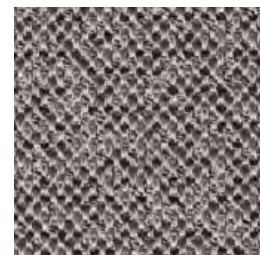
Sesam



Night



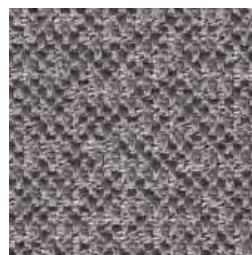
Secret



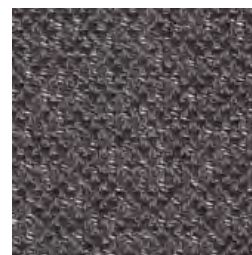
Pepper



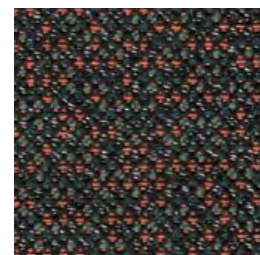
Kies



Fels






Carbon



Arion

# Mica

## TECHNICAL PROPERTIES

PROPERTIES	VALUE
Composition	95% Virgin Wool 5% Polyamid
Weight	840 g/ml
Martindale	50,000
Fabric care instruction	  

Category

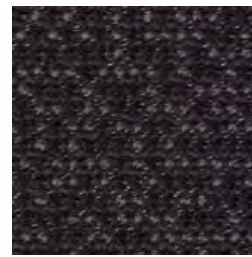




Black



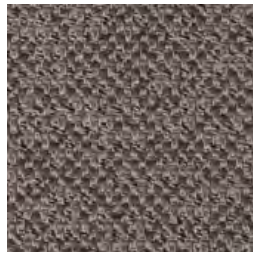
Jungle



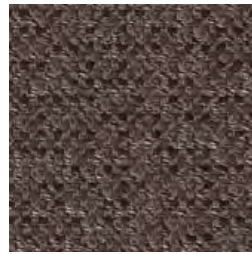
Lanoso



Ivy



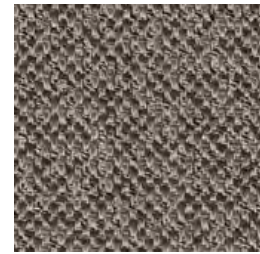
Taupe



Torba



Delphi



Peat






Crisp



Amber

# Mica

## TECHNICAL PROPERTIES

PROPERTIES	VALUE
Composition	95% Virgin Wool 5% Polyamid
Weight	840 g/ml
Martindale	50,000
Fabric care instruction	  

Category





02



03



04



05



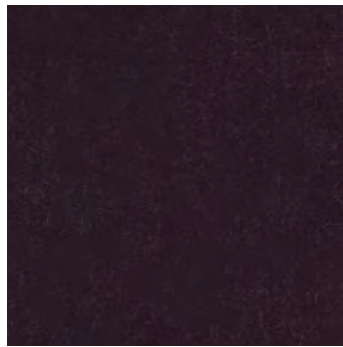
06



07



10



11



14

# Nobilis

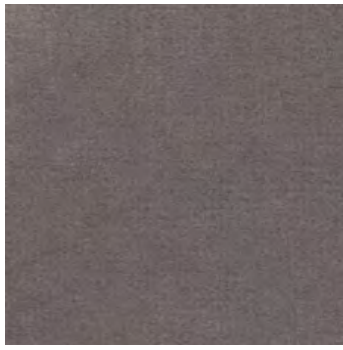
(Velvet)

## TECHNICAL PROPERTIES

PROPERTIES	VALUE
Composition	100% Cotton
Weight	620 g/ml
Martindale	>65,000
Fabric care instruction	

Category





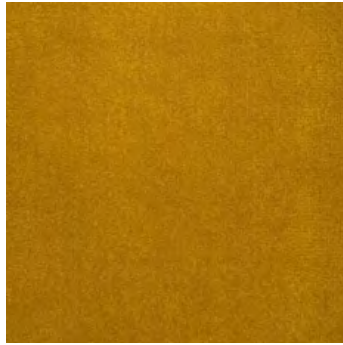
21



22



25








40

# Nobilis

(Velvet)

## TECHNICAL PROPERTIES

PROPERTIES	VALUE
Composition	100% Cotton
Weight	620 g/ml
Martindale	>65,000
Fabric care instruction	    

Category

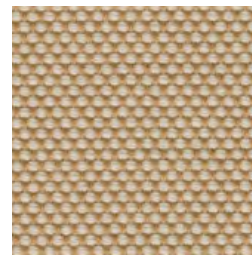




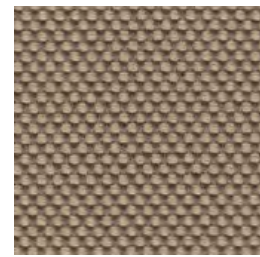
Snow



Angora



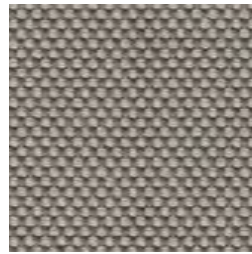
Moon



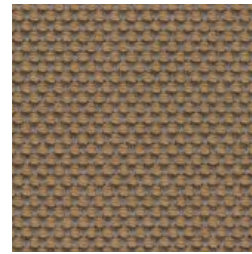
Stone



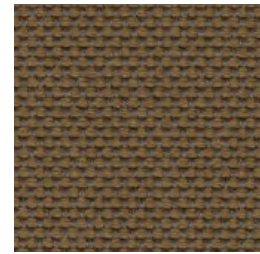
Cocos



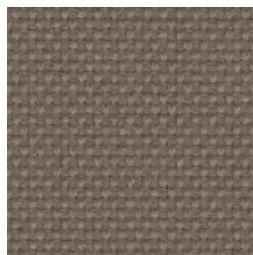
Kies



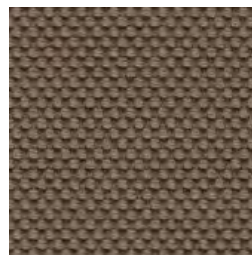
Paradise



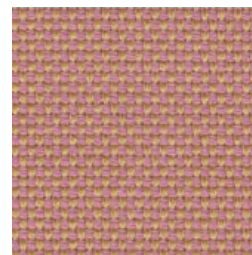
Cacao



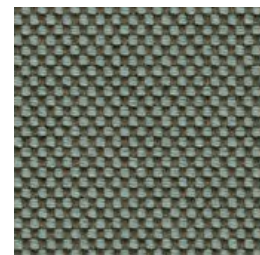
Plaza



Santos



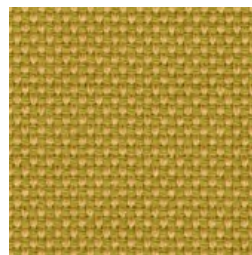
Flamingo



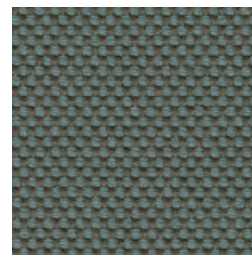
Prime



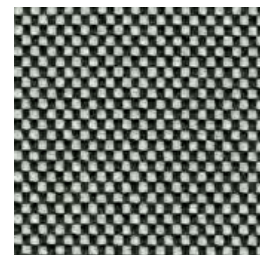
Lagoon



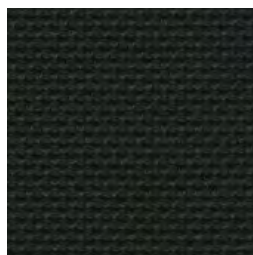
Pear



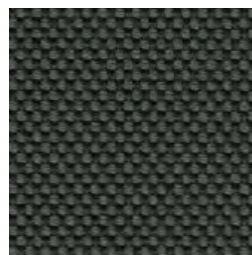
Delphi



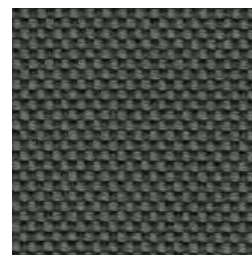
Pepper



Ebony



Lanoso






Carbon



Azur

# Novum

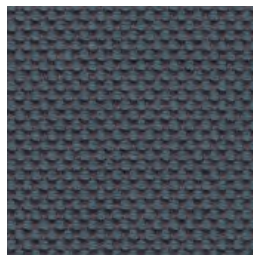
## TECHNICAL PROPERTIES

PROPERTIES	VALUE
Composition	96% Virgin Wool 4% Polyamid
Weight	990 g/ml
Martindale	90,000
Fabric care instruction	  

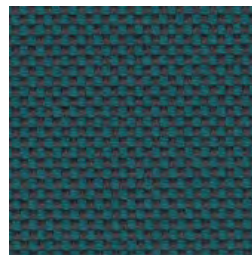
Category



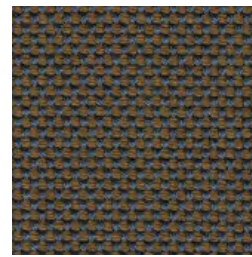




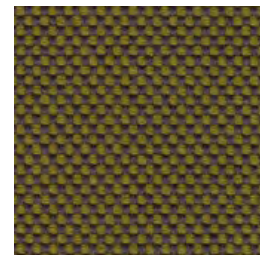
Blues



Samoa



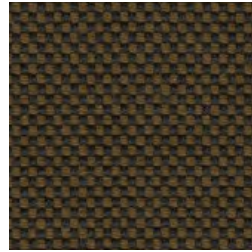
Lord



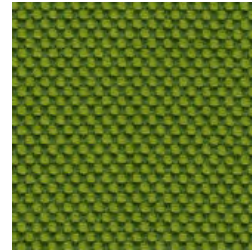
Pinie



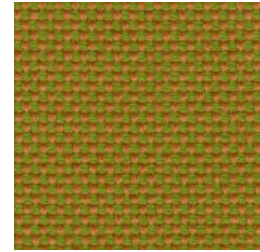
Rosewood



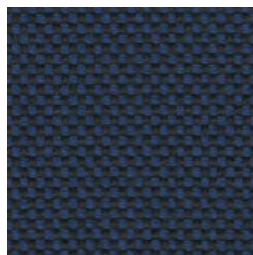
Seed



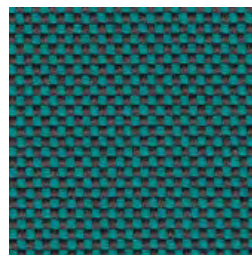
Moos



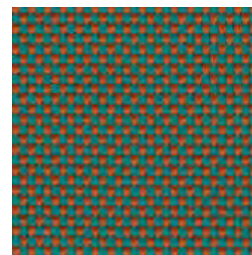
Tivoli



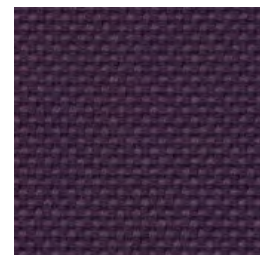
Amur



Prisma



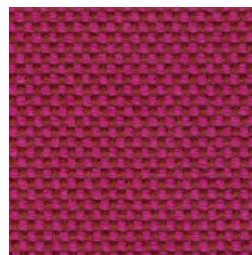
Mambo



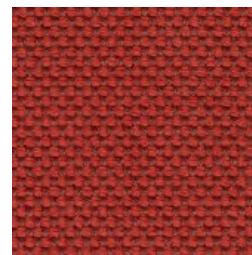
Prune



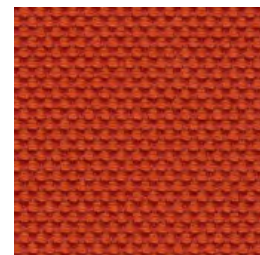
Viola



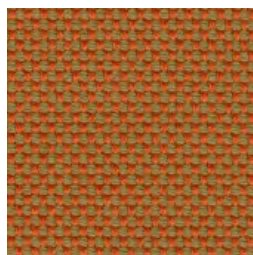
Magenta



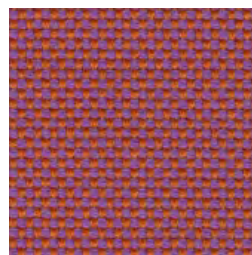
Heart



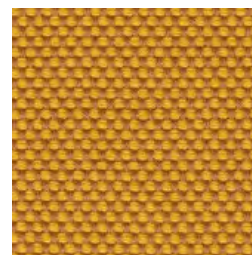
Sunset



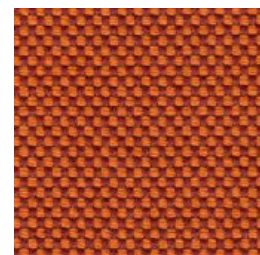
Terra



Litchi






Curry



Coral

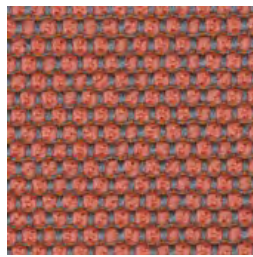
# Novum

## TECHNICAL PROPERTIES

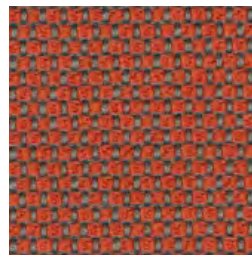
PROPERTIES	VALUE
Composition	96% Virgin Wool 4% Polyamid
Weight	990 g/ml
Martindale	90,000
Fabric care instruction	  

Category

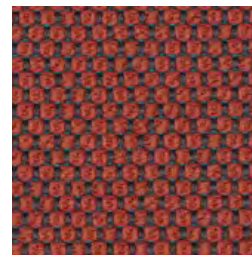




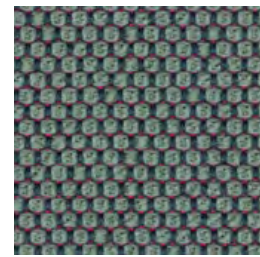
Guave



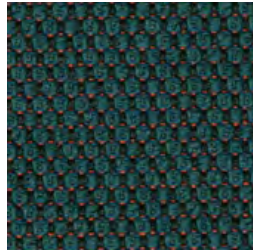
Clementine



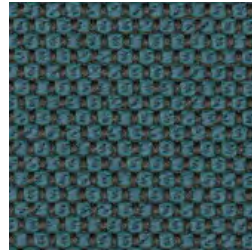
Indio



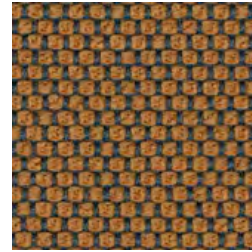
Aloe



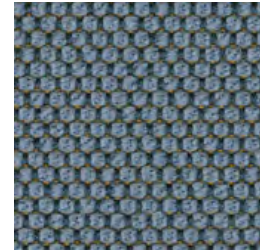
Smaragd



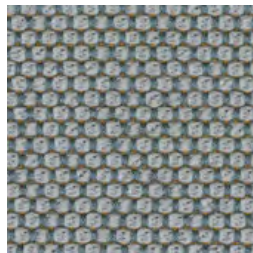
Delphi



Brick



Bleu



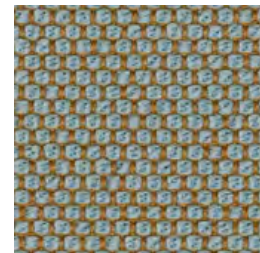
Lake



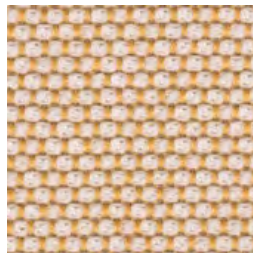
Navy



Delft



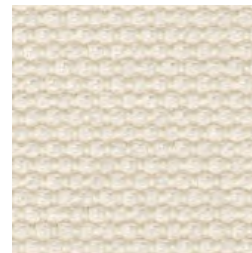
Jade



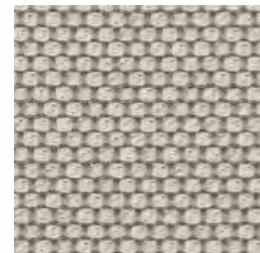
Sorbet



Aureo



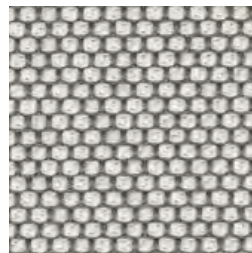
Kristall



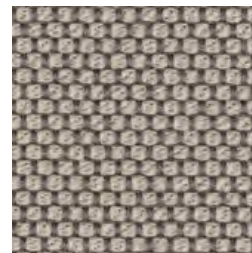
Macadamia



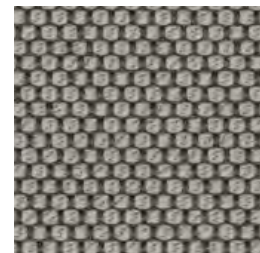
Calla



Mirror






Flanell



Fango

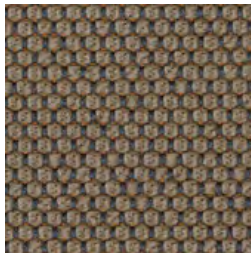
# Opera

## TECHNICAL PROPERTIES

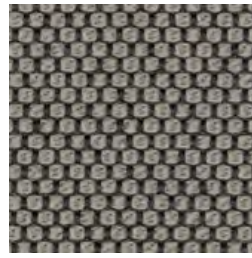
PROPERTIES	VALUE
Composition	96% Virgin Wool 4% Polyamid
Weight	1010 g/ml
Martindale	90,000
Fabric care instruction	  

Category





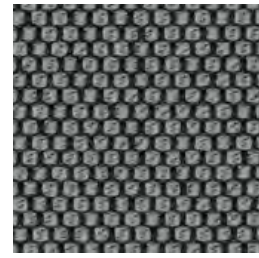
Maple



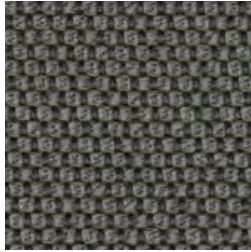
Taupe



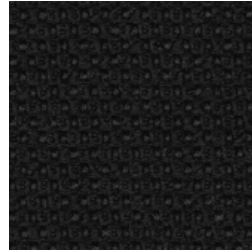
Anthrazit



Kies



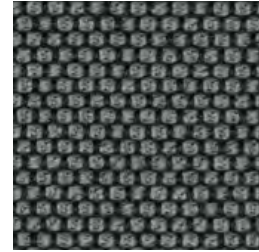
Prime



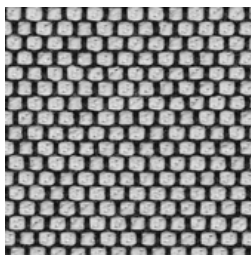
Ebony



Rosewood






Carbon



Pepper

# Opera

## TECHNICAL PROPERTIES

PROPERTIES	VALUE
Composition	96% Virgin Wool 4% Polyamid
Weight	1010 g/ml
Martindale	90,000
Fabric care instruction	  

Category

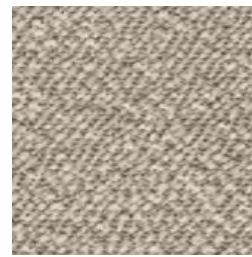




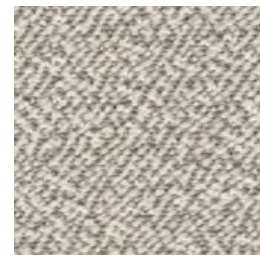
Snow



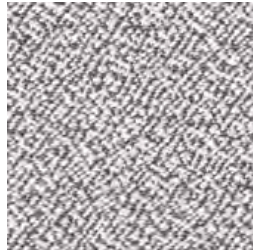
Calla



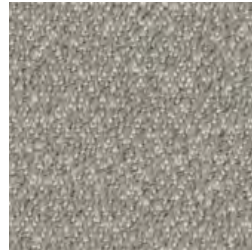
Flanell



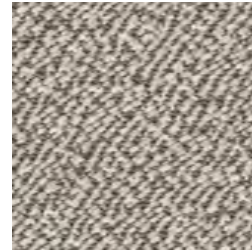
Almond



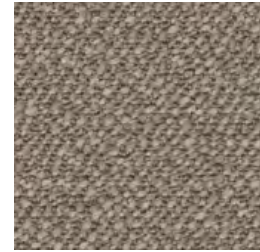
Porcelain



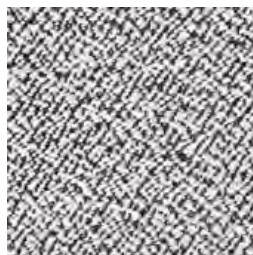
Mirror



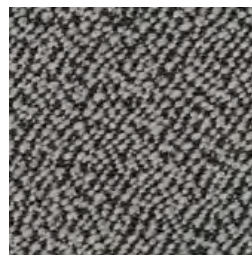
Stone



Taupe



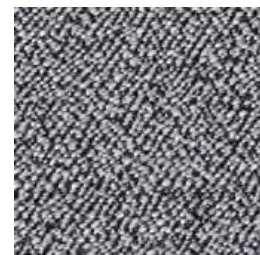
Pepper



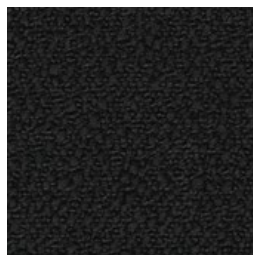
Fango



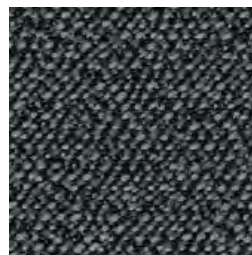
Walnut



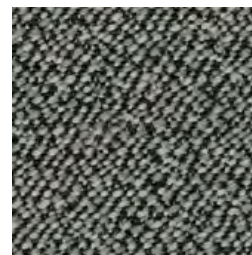
Carbon



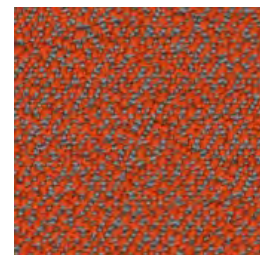
Ebony



Graphit



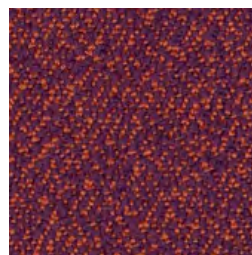
Gravel



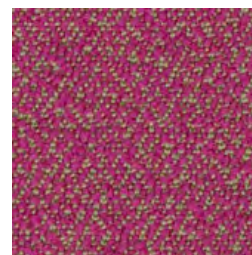
Glow



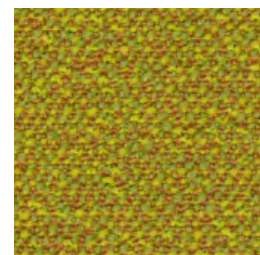
Chutney



Berry






Lotus



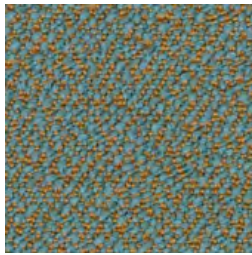
Tivoli

# Sera

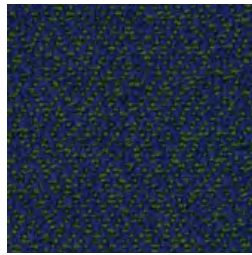
## TECHNICAL PROPERTIES

PROPERTIES	VALUE
Composition	94% Virgin Wool 6% Polyamid
Weight	910 g/ml
Martindale	122,000
Fabric care instruction	  





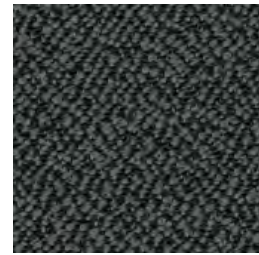
Mirage



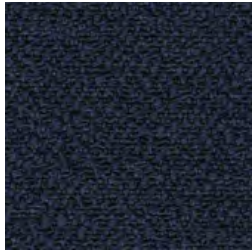
Mare



Torba



Anthrazit






Amur



Rosewood

# Sera

## TECHNICAL PROPERTIES

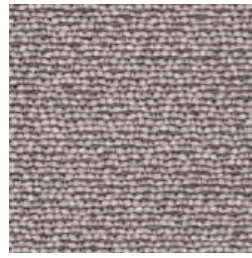
PROPERTIES	VALUE
Composition	94% Virgin Wool 6% Polyamid
Weight	910 g/ml
Martindale	122,000
Fabric care instruction	  

Category





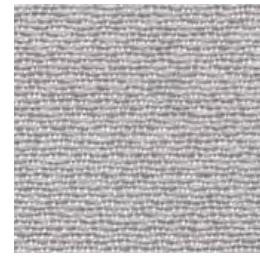
Chalk



Porcelain



Lake



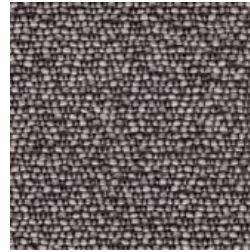
Calla



Terra



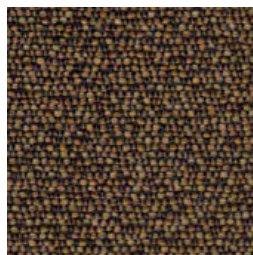
Hazelnut



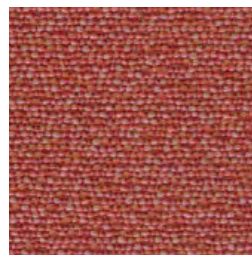
Stone



Clay



Nougat



Coral



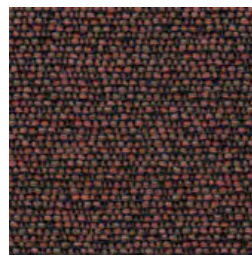
Malve



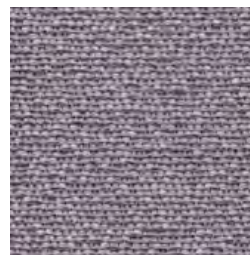
Espresso



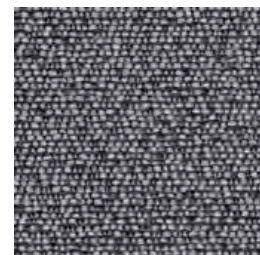
Cherry



Kandis



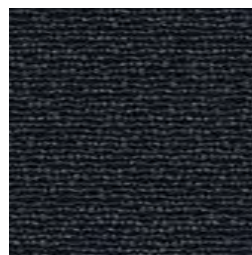
Plaza



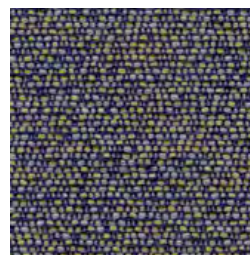
Seal



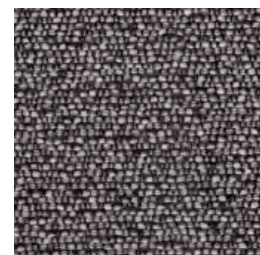
Carbon



Anthrazit






Galaxy



Walnut

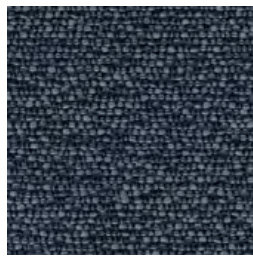
# Shake

## TECHNICAL PROPERTIES

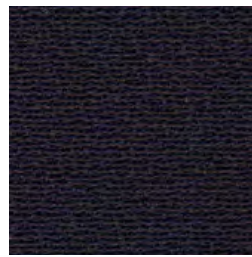
PROPERTIES	VALUE
Composition	95% Virgin Wool 5% Polyamid
Weight	660 g/ml
Martindale	60,000
Fabric care instruction	  

Category

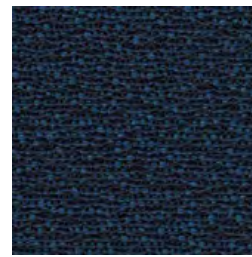




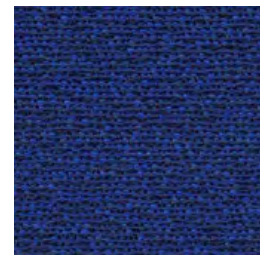
Mountain



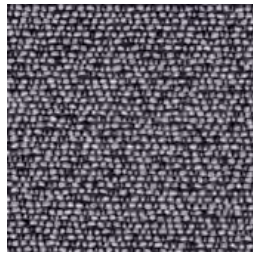
Night



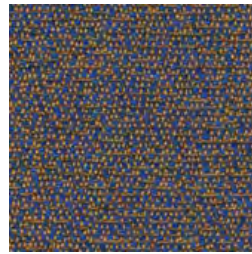
Amur



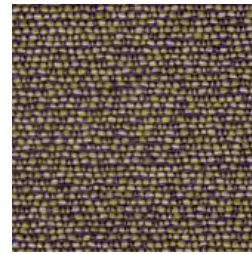
Cobalt



Pepper



Vivid



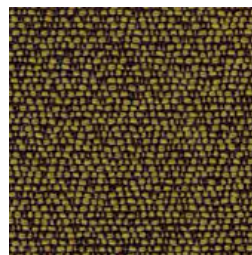
Aurum



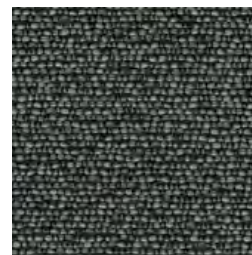
Kurkuma



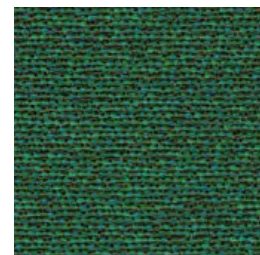
Sol



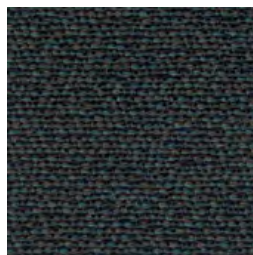
Gold



Algae



Bold



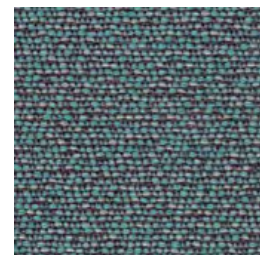
Ivy



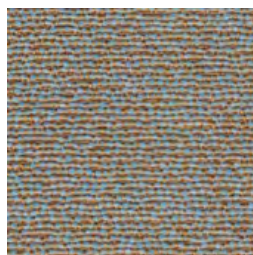
Vulcan



Fero






Ray



Jade

# Shake

## TECHNICAL PROPERTIES

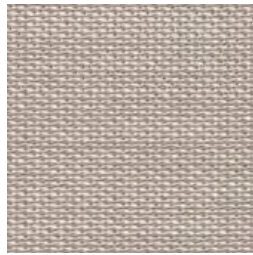
PROPERTIES	VALUE
Composition	95% Virgin Wool 5% Polyamid
Weight	660 g/ml
Martindale	60,000
Fabric care instruction	  

Category

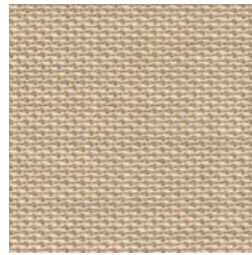




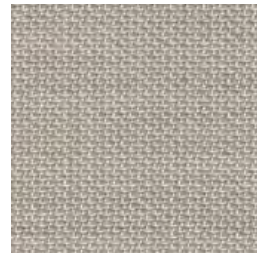
Snow



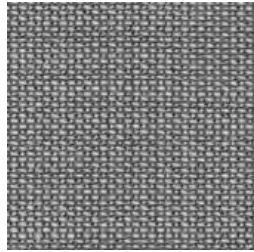
Angora



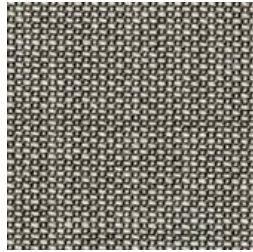
Moon



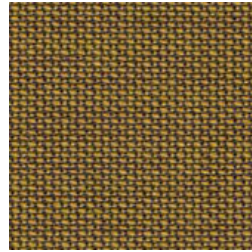
Chrom



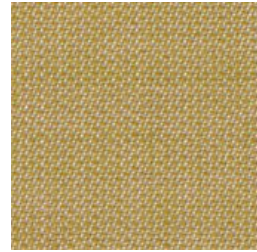
Silver



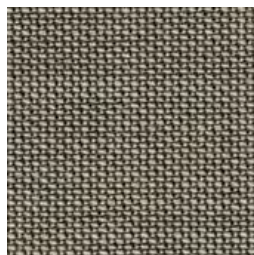
Platin



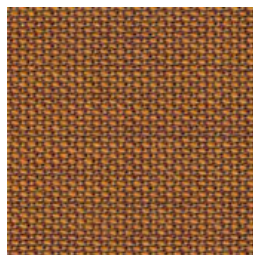
Gold



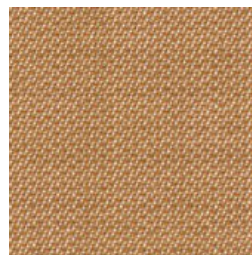
Aureo



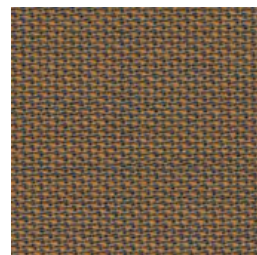
Peat



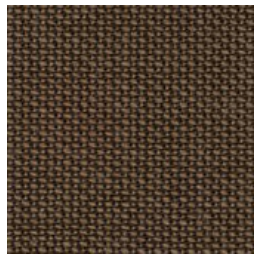
Kupfer



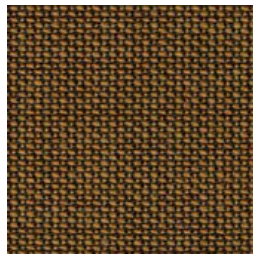
Messing



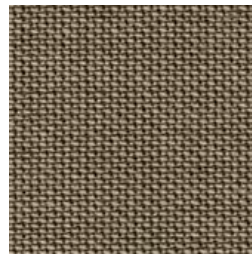
Lord



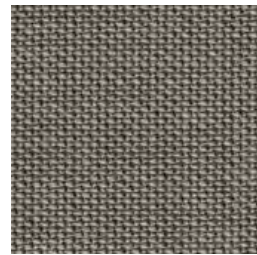
Coffee



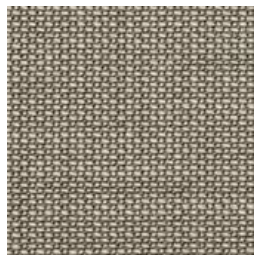
Bronze



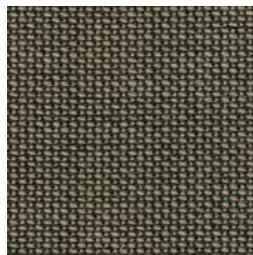
Walnut



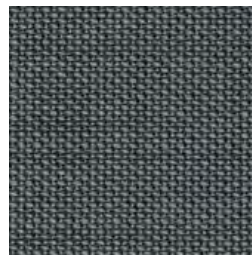
Taupe



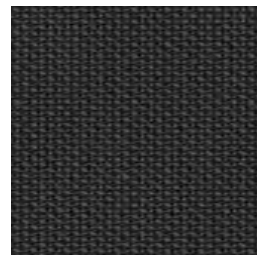
Stone



Truffle






Graphit



Lanoso

# Topia

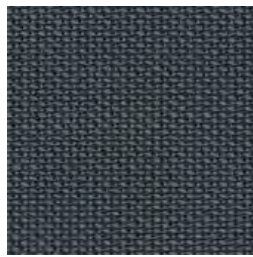
## TECHNICAL PROPERTIES

PROPERTIES	VALUE
Composition	95% Virgin Wool 5% Polyamid
Weight	660 g/ml
Martindale	50,000
Fabric care instruction	  

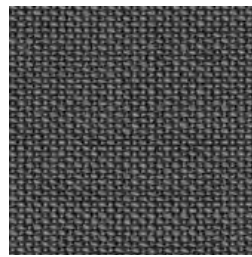
Category



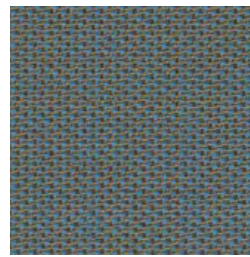




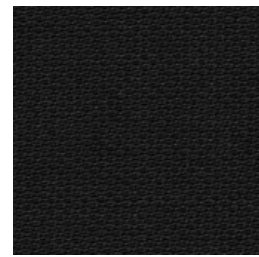
Anthrazit



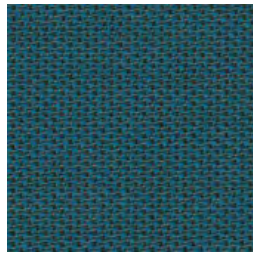
Schiefer



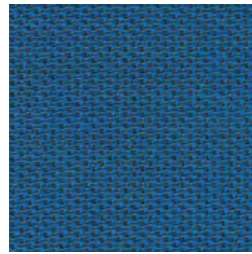
Seashell



Ebony



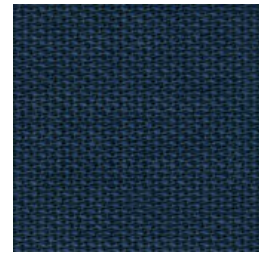
Azur



Enzian



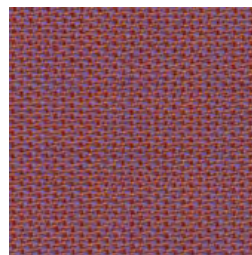
Rosewood



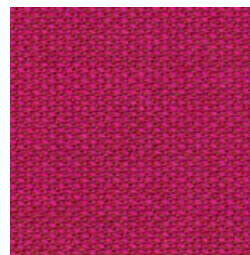
Orion



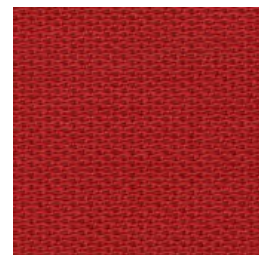
Viola



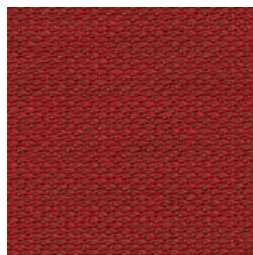
Litchi



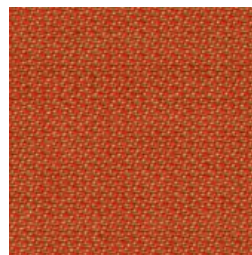
Calluna



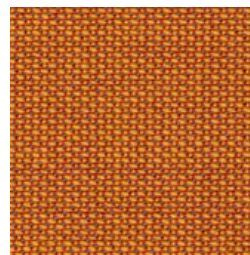
Chilli



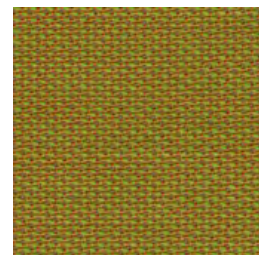
Heart



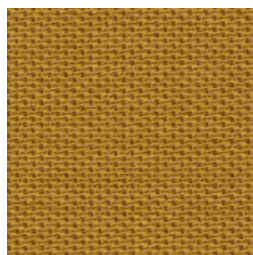
Coral



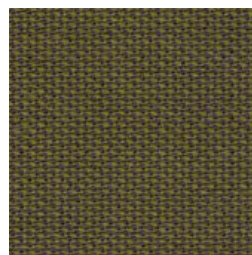
Jelly



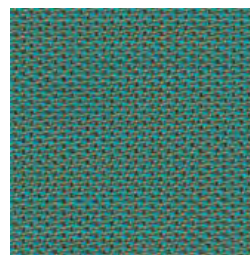
Tivoli



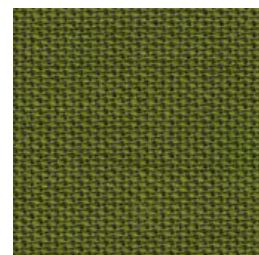
Curry



Pinie






Tropic



Palm

# Topia

## TECHNICAL PROPERTIES

PROPERTIES	VALUE
Composition	95% Virgin Wool 5% Polyamid
Weight	660 g/ml
Martindale	50,000
Fabric care instruction	  

Category



**Category**

**E**



## Divina 3

### TECHNICAL PROPERTIES

PROPERTIES	VALUE
Composition	100% New wool
Weight	840 g/ml
Martindale	45,000
Fabric care instruction	

Category





## Divina 3

### TECHNICAL PROPERTIES

PROPERTIES	VALUE
Composition	100% New wool
Weight	840 g/ml
Martindale	45,000
Fabric care instruction	

Category





## Divina 3

### TECHNICAL PROPERTIES

PROPERTIES	VALUE
Composition	100% New wool
Weight	840 g/ml
Martindale	45,000
Fabric care instruction	

Category





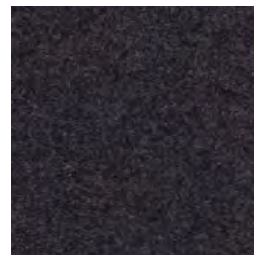
0193



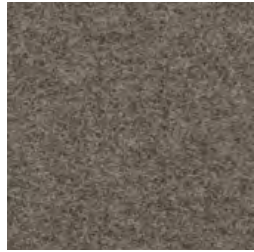
0203



0213



0293



0343



0353



0363



0413



0433



0453



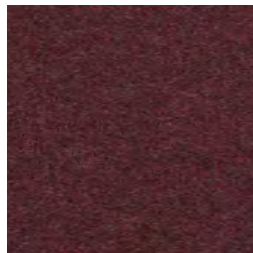
0613



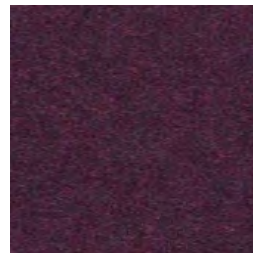
0633



0653



0673



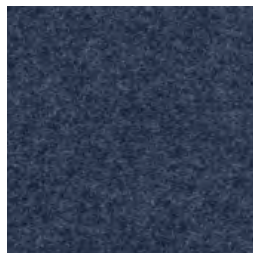
0683



0713



0733



0743








0753



0773

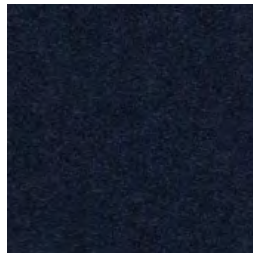
## Divina MD

### TECHNICAL PROPERTIES

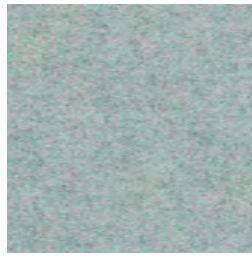
PROPERTIES	VALUE
Composition	100% New wool
Weight	840 g/ml
Martindale	45,000
Fabric care instruction	    

Category

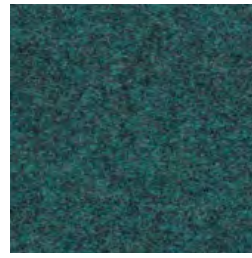




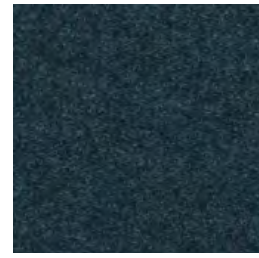
0783



0813



0843



0873



0913








0943



0973

# Divina MD

## TECHNICAL PROPERTIES

PROPERTIES	VALUE
Composition	100% New wool
Weight	840 g/ml
Martindale	45,000
Fabric care instruction	    





Category





# Divina Melange 3

## TECHNICAL PROPERTIES

PROPERTIES	VALUE
Composition	100% New wool
Weight	840 g/ml
Martindale	45,000
Fabric care instruction	   

Category







# Divina Melange 3

## TECHNICAL PROPERTIES

PROPERTIES	VALUE
Composition	100% New wool
Weight	840 g/ml
Martindale	45,000
Fabric care instruction	

Category





# Harald 3

(Velvet)

## TECHNICAL PROPERTIES

PROPERTIES	VALUE
Composition	100% Cotton
Weight	520 g/ml
Martindale	100,000

Fabric care instruction



Category





0632



0652



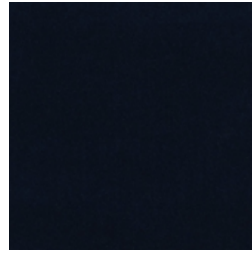
0692



0722



0772



0792



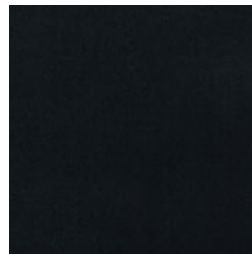
0823



0942



0952







0982

# Harald 3

(Velvet)

## TECHNICAL PROPERTIES

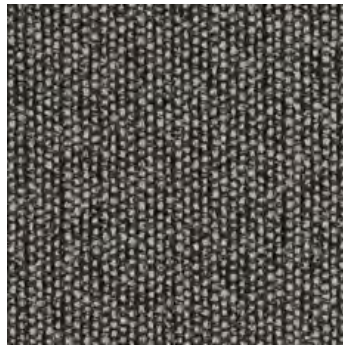
PROPERTIES	VALUE
Composition	100% Cotton
Weight	520 g/ml
Martindale	100,000
Fabric care instruction	    

Category





0122



0152



0192



0202



0222



0242



0262








0292



0442

# Savana

## TECHNICAL PROPERTIES

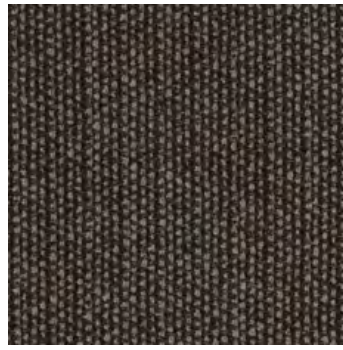
PROPERTIES	VALUE
Composition	34% Polyester 31% New wool 26% Acrylic 4% Cotton 3% Nylon 2% Linen
Weight	680 g/ml
Martindale	45,000
Fabric care instruction	    

Category

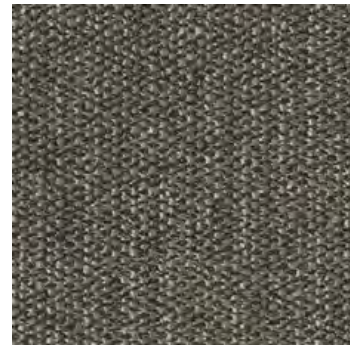




0622



0672



0952

# Savana

## TECHNICAL PROPERTIES

PROPERTIES	VALUE
Composition	34% Polyester 31% New wool 26% Acrylic 4% Cotton 3% Nylon 2% Linen
Weight	680 g/ml
Martindale	45,000
Fabric care instruction	

Category



**Category**

**F**



# Comfort+

## TECHNICAL PROPERTIES

PROPERTIES	VALUE
Composition	88% Polyester 12% Polyurethane
Weight	385 g/ml
Martindale	>100,000
Fabric care instruction	





## Comfort+

### TECHNICAL PROPERTIES

PROPERTIES	VALUE
Composition	88% Polyester 12% Polyurethane
Weight	385 g/ml
Martindale	>100,000
Fabric care instruction	

Category







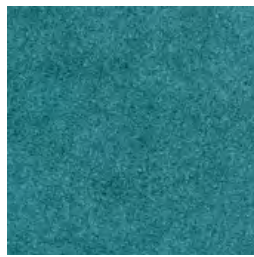
## Comfort+

### TECHNICAL PROPERTIES

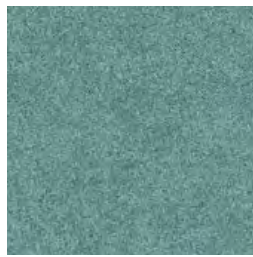
PROPERTIES	VALUE
Composition	88% Polyester 12% Polyurethane
Weight	385 g/ml
Martindale	>100,000
Fabric care instruction	

Category





0033



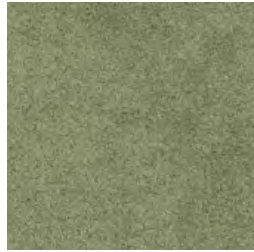
0034



8422



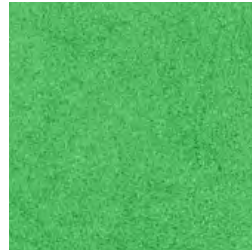
68009



8397



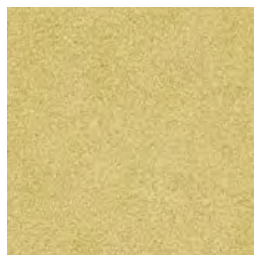
68010



68003



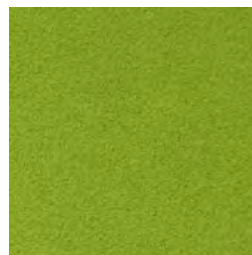
68008



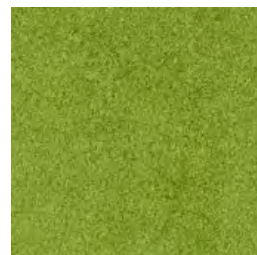
1049



68001



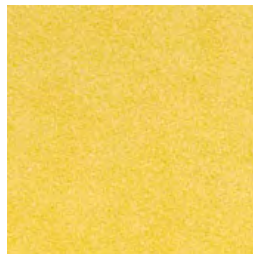
68011



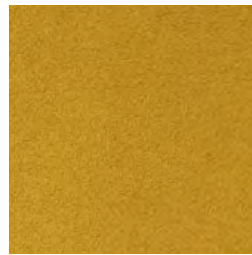
68000



62005



62003



62004



68007



0018

## Comfort+

### TECHNICAL PROPERTIES

PROPERTIES	VALUE
Composition	88% Polyester 12% Polyurethane
Weight	385 g/ml
Martindale	>100,000
Fabric care instruction	

Category



**BEN  
SEN**

[bensen.com](https://www.bensen.com)