

Fold



Sew Sew Patterns
Round Dish Carrier
Straps
Cut 2 Fabric
Cut 2 Interfacing
(optional)
1/4" seams

Yardage:

Use heat resistant materials

1 yard: Entire Carrier

1 Fat Quarter: Interlining (canvas)

Interfacing for Straps

2 yards of bias 1.375" wide (or
fabric to make some)

or

1/2 yard: Both Tops & Straps

1 Fat Quarter: Exterior Bottom *

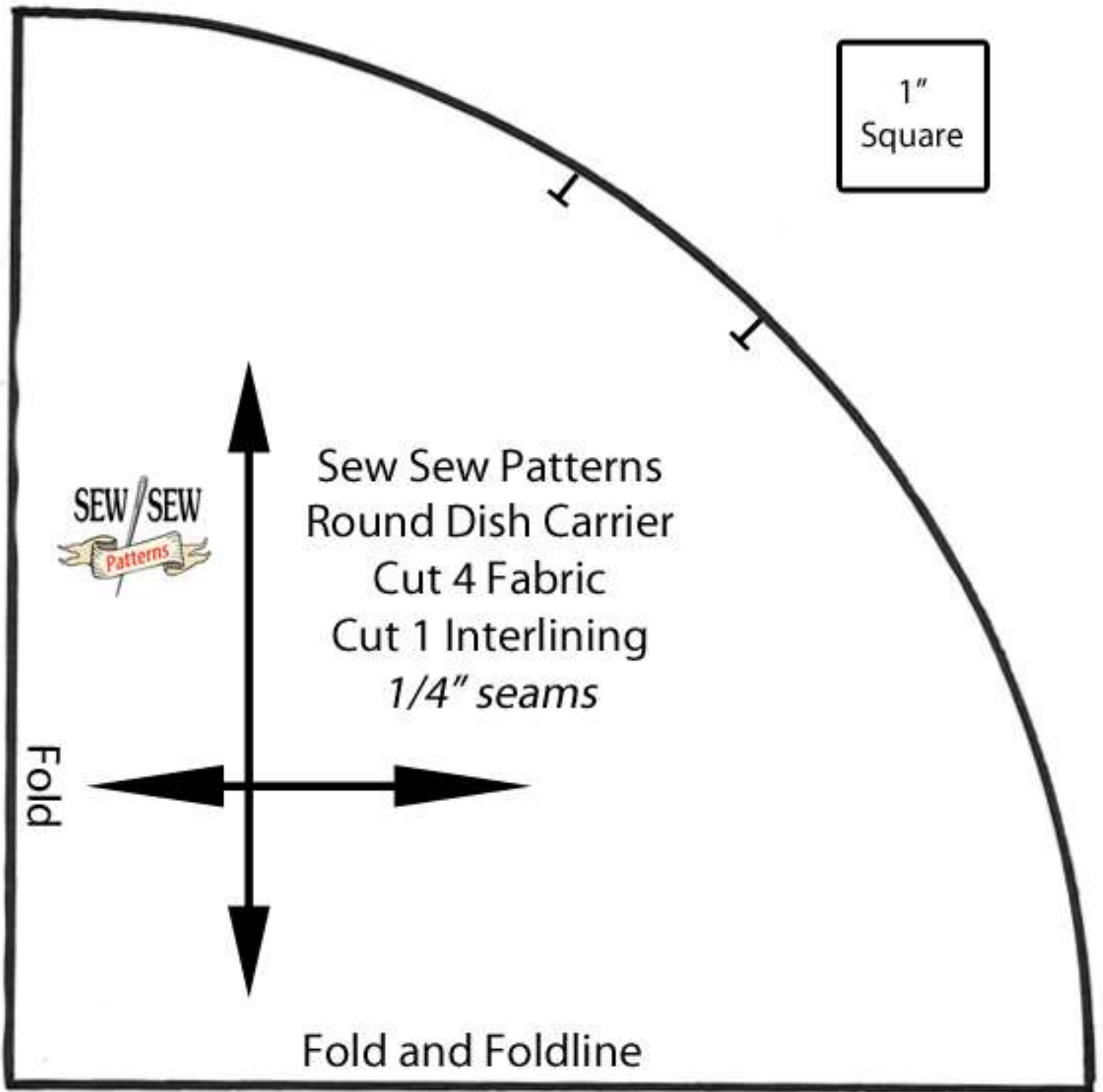
1 Fat Quarter: Interior Bottom *

1 Fat Quarter: Interlining (canvas)

Interfacing for Straps

* you can fit ONE strap on each
Fat Quarter

1"
Square



1"
Square



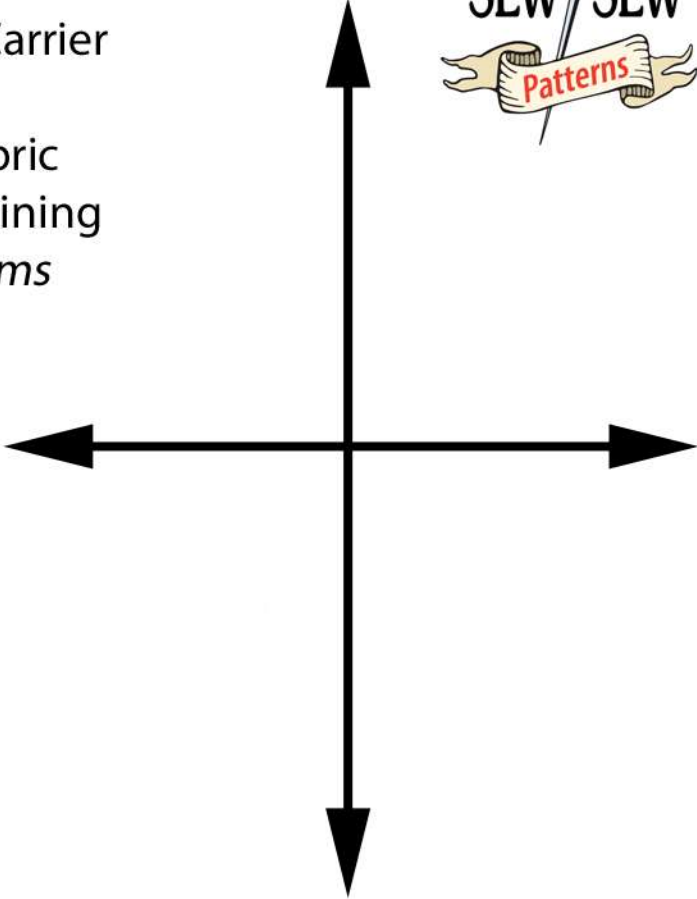
Sew Sew Patterns
Round Dish Carrier
Cut 4 Fabric
Cut 1 Interlining
1/4" seams

Fold

Fold and Foldline

1"
Square

Sew Sew Patterns
Casserole Carrier
Body
Cut 2 Fabric
Cut 1 Interlining
1/4" seams



Fold

Fold

Fold



Sew Sew Patterns
Casserole Dish Carrier
Straps
Cut 2 Fabric
Cut 2 Interfacing
(optional)
1/4" seams

Notions:

3/8" elastic:

2 pieces each 13" long

Yardage:

Use heat resistant materials

1 yard: Entire Carrier

1 Fat Quarter: Interlining (canvas)

Interfacing for Straps

2 yards bias 1.375" wide or fabric to make some.

Or:

1 Fat Quarter: Both Tops

1 Fat Quarter: Exterior Bottom

1 Fat Quarter: Interior Bottom

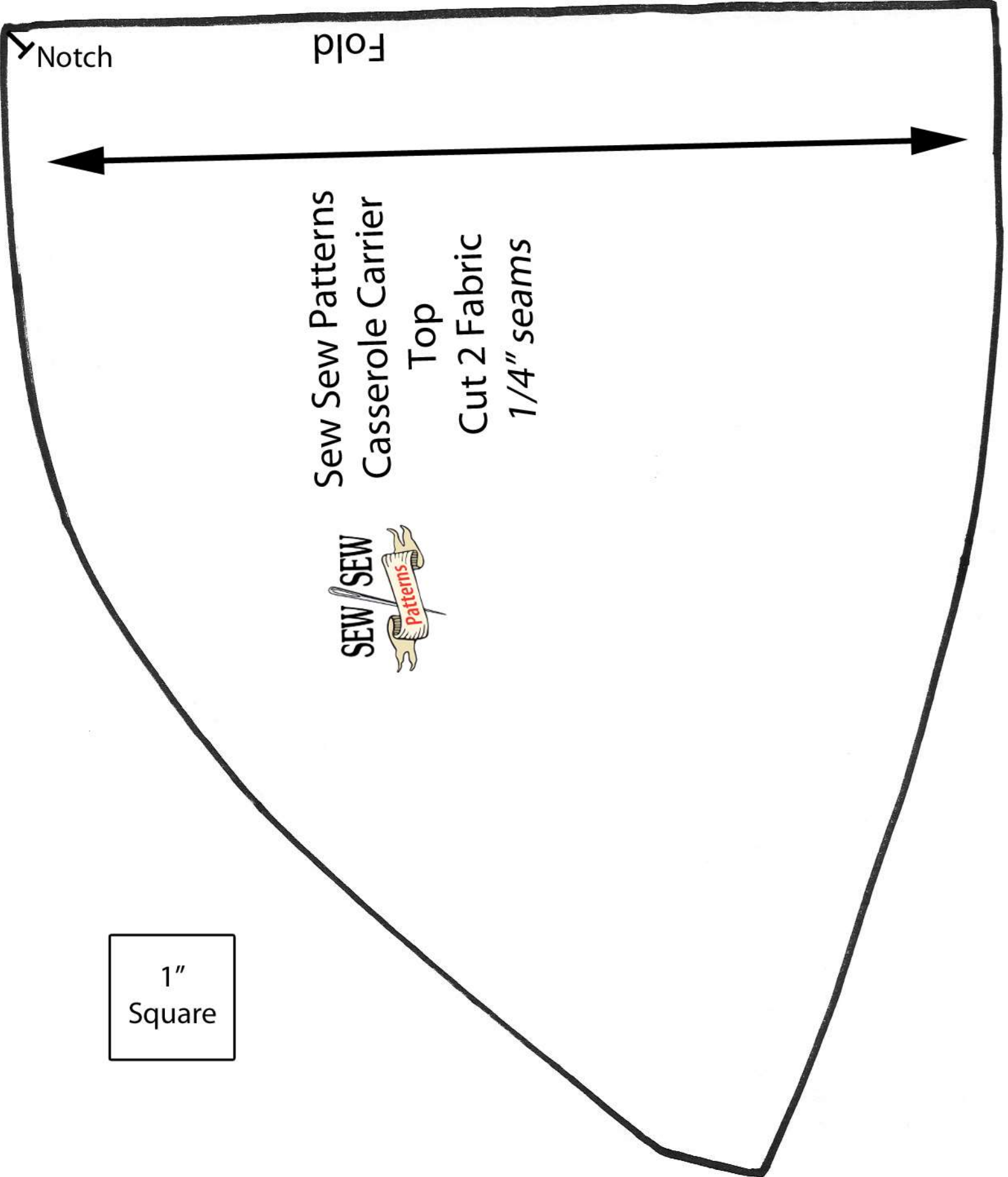
1 Fat Quarter: Both Straps

1 Fat Quarter: Interlining (canvas)

Interfacing for Straps

Bias or fabric for bias

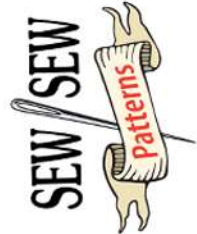
1"
Square



Fold

Notch

Sew Sew Patterns
Casserole Carrier
Top
Cut 2 Fabric
1/4" seams



1"
Square