

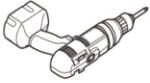
AQUADOM

INSTALLATION GUIDE



AQUADOM Cabinet Installation Guide

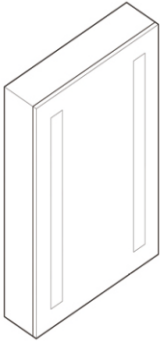
ASSEMBLY TOOLS



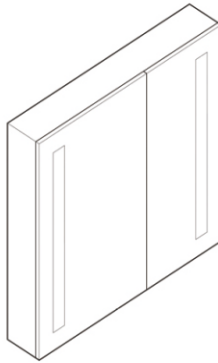
1/8" Drill Bit



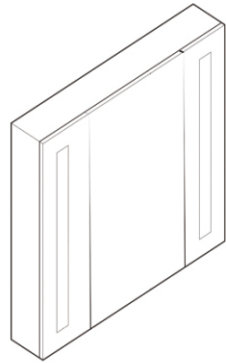
PARTS



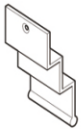
Single Door



Double Door



Triple Door



Top Mounting Bracket



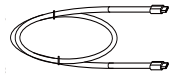
Shelf Clip



Bottom Mounting Bracket



Bumper



USB cable



Glass Shelf



Glass Side Panel



Hole Plug



Screw



Makeup Mirror

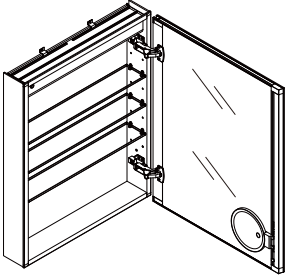


Wall Plug Anchor



AQUADOM Cabinet Installation Guide

DIMENSIONS



A - Cabinet's width

B - Cabinet's Height

C - Cabinet's DePth

NOTE: Determine overall medicine cabinet dimensions. If recessing medicine cabinet, determine rough-in dimensions.

SIGNATURE
ROYALE
+
ROYALE PLUS
+
ROYALE
BASIC

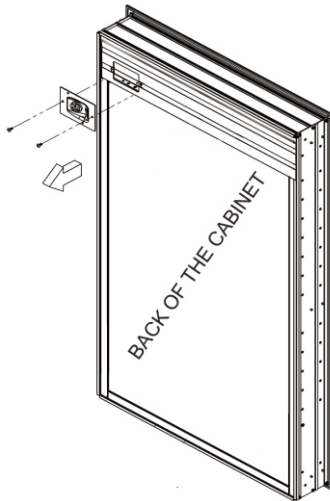
| SIZE inches | ROUGH IN DIMENSIONS inches |
|-------------|----------------------------|
| 24 x 30 | 23.5 x 29.5 |
| 24 x 36 | 23.5 x 35.5 |
| 24 x 40 | 23.5 x 39.5 |
| 30 x 30 | 29.5 x 29.5 |
| 30 x 36 | 29.5 x 35.5 |
| 36 x 30 | 35.5 x 29.5 |
| 36 x 36 | 35.5 x 35.5 |
| 48 x 30 | 47.5 x 29.5 |
| 48 x 36 | 47.5 x 35.5 |
| 40 x 30 | 39.5 x 29.5 |
| 40 x 36 | 39.5 x 35.5 |
| 60 x 30 | 59.5 x 29.5 |
| 60 x 36 | 59.5 x 35.5 |
| 72 x 36 | 71.5 x 35.5 |

EDGE
ROYALE

| SIZE inches | ROUGH IN DIMENSIONS inches |
|-------------|----------------------------|
| 15 x 70 | 14.5 x 69.3 |
| 20 x 32 | 19.5 x 31.3 |
| 24 x 32 | 23.5 x 31.3 |
| 30 x 32 | 29.5 x 31.3 |
| 36 x 32 | 35.5 x 31.3 |
| 48 x 32 | 47.5 x 31.3 |
| 60 x 32 | 59.5 x 31.3 |
| 72 x 32 | 71.5 x 31.3 |

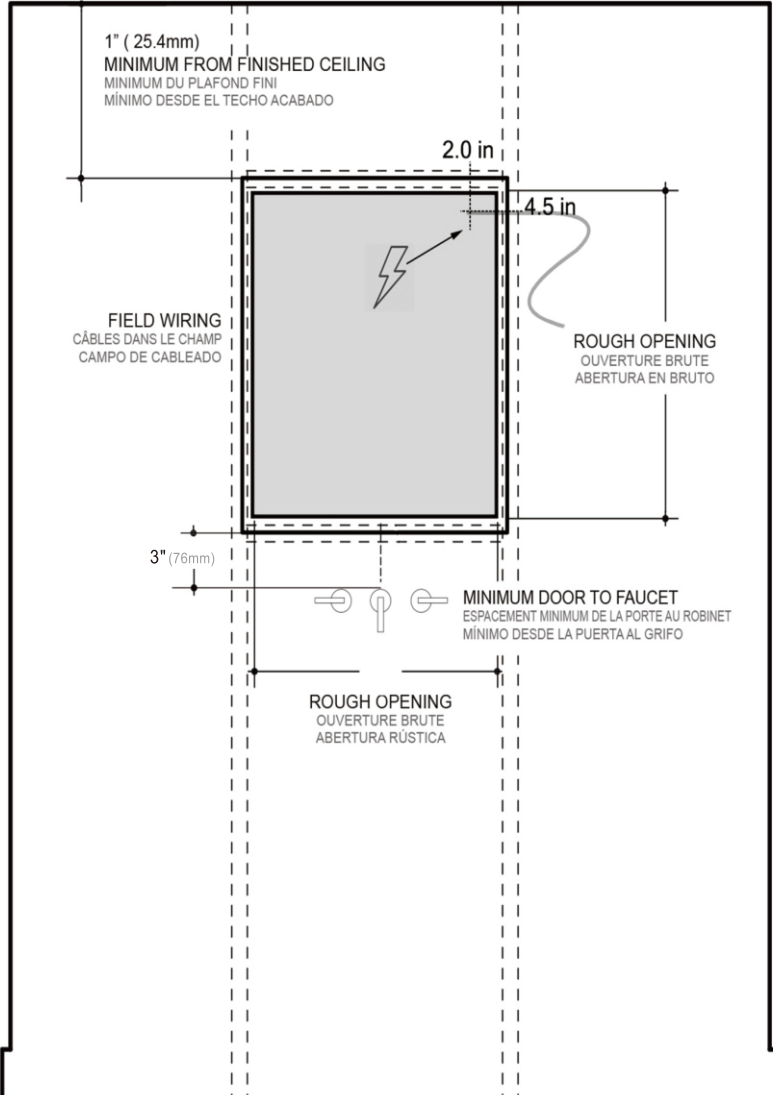
WIRING

* AQUADOM Medicine Cabinet as seen from the back *



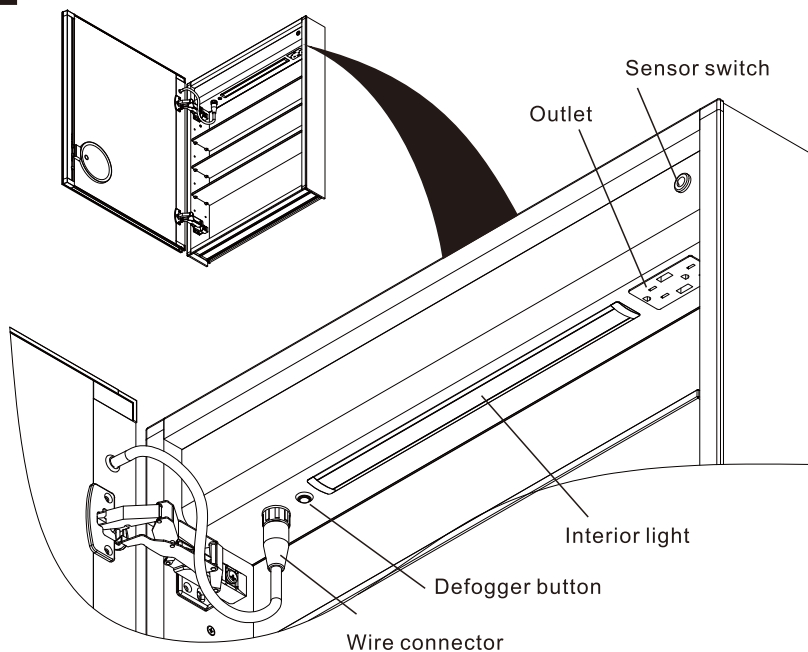
The wire bracket is located at the top right corner of the cabinet if viewed from the front

WIRING

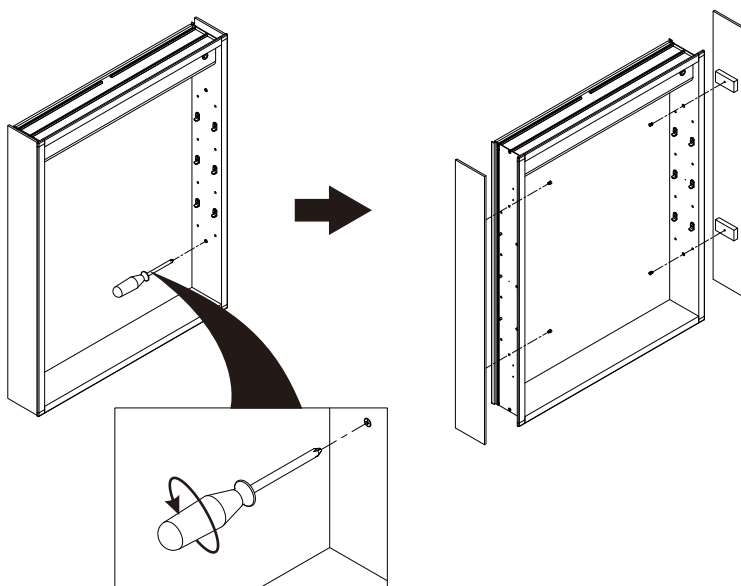


INSTALLATION

1 Interior of the Medicine Cabinet



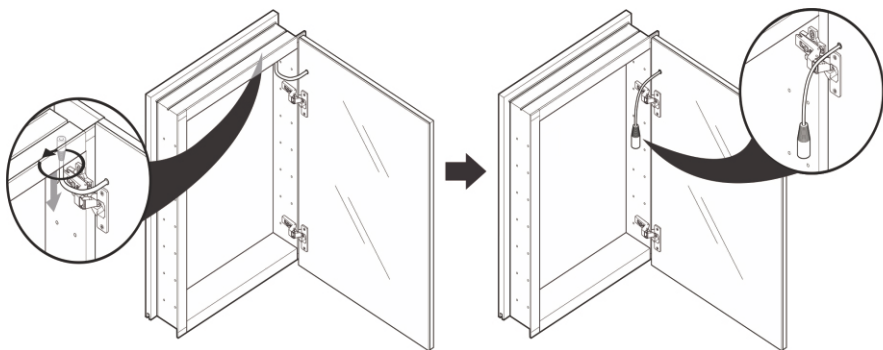
2 Remove mirrored side panels from the medicine cabinet using a screwdriver .



PRE-INSTALLATION

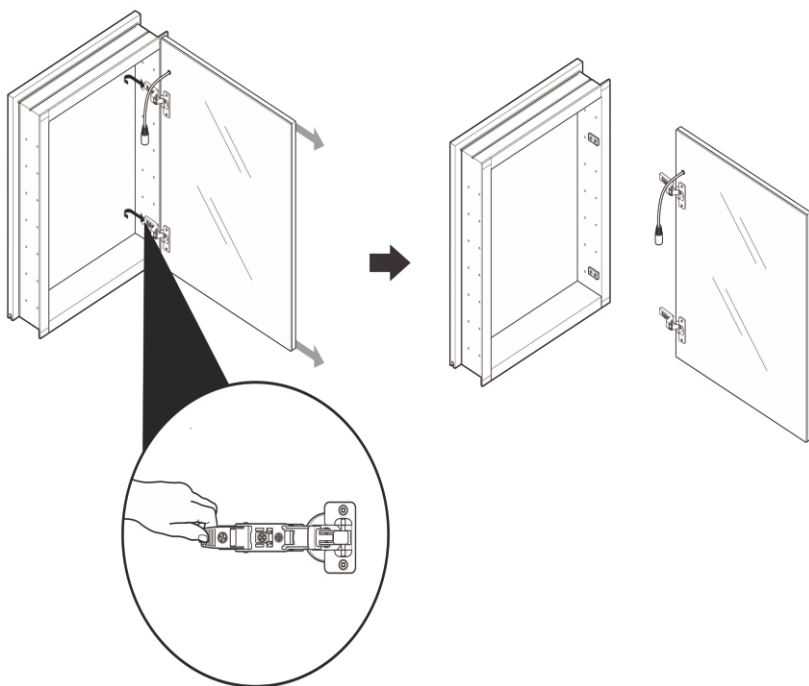
1

Remove Door/s Prior mounting your cabinet. Start with unplugging the door from the cabinet.



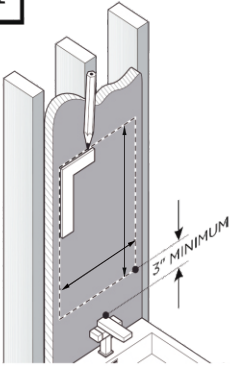
2

While supporting the door release the lever under the hinge arm. Slide the door off the frame.



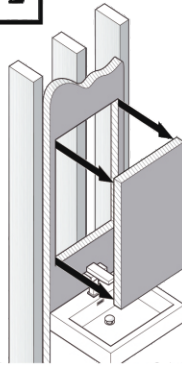
RECESS-MOUNT INSTALLATION

1



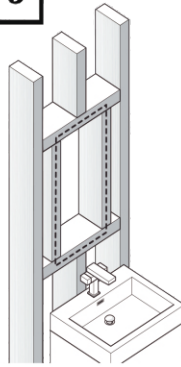
Draw the perimeter of the medicine cabinet on the wall.

2



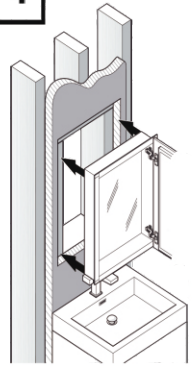
Cut the marked perimeter with appropriate tool.

3



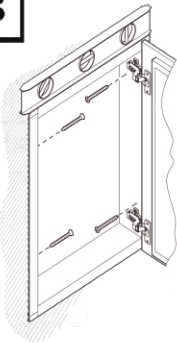
Frame the cutout opening.
(See Illustration below)

4



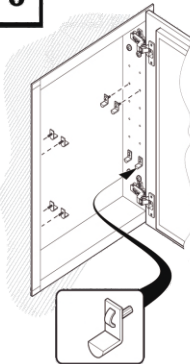
Place and hold the medicine cabinet in the cutout opening.

5



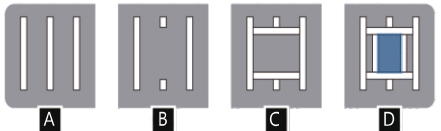
Level, then secure the medicine cabinet with the screws through the mounting holes into the framing studs.

6



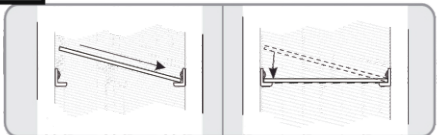
Choose the position for your shelves, then push and twist the snap-in pins into place.

4 STEPS TO FRAME THE CUTOUT OPENING



7

GLASS SHELF INSTALLATION



Push a side of the glass shelf into the left or the right pins.

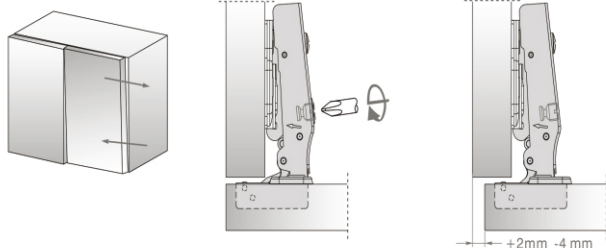
Snap the glass shelf into the opposite side.

HINGE ADJUSTMENT

DTC

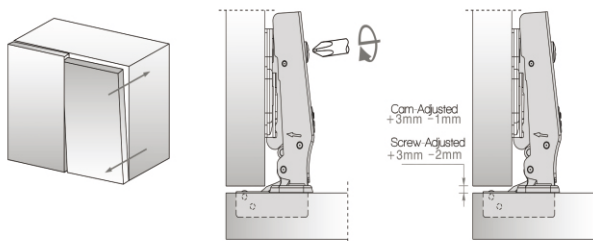
Side Adjustment

Side adjustment of the door is made by using the indicated cam screw.



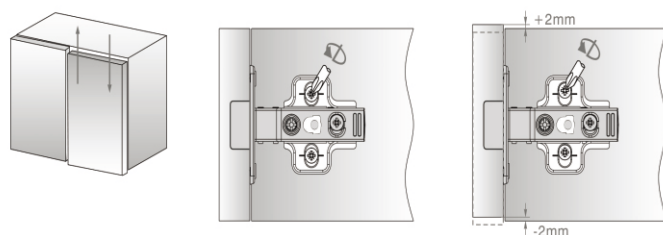
Depth Adjustment

Depth adjustment is made without loosening any screw. The door can be moved in or out by rotating the cam adjuster or fixing screw on the hinge arm.



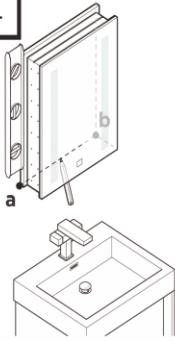
Height Adjustment

By loosening the two fixing screws, you can allow the mounting plate to slide up or down and the door can be adjusted vertically by $\pm 2\text{mm}$. After adjusting, retighten the screws. If you are using a mounting plate with cam adjustment for height, simply turn the cam adjuster to align.



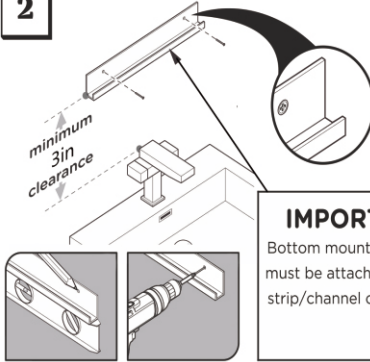
SURFACE MOUNT

1



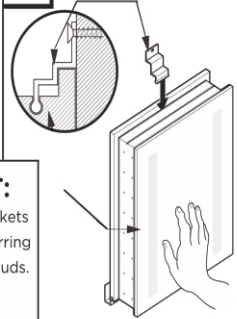
Level and mark the medicine cabinet's location on the wall from point **a** to point **b**.

2



Level and mark. Attach bottom bracket to the wall.

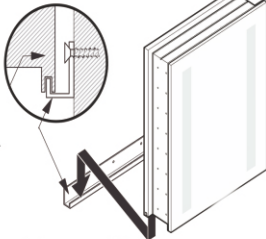
3



Insert top mounting bracket into the top of the cabinet

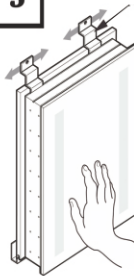
IMPORTANT:
Bottom mounting brackets must be attached to furring strip/channel or wall studs.

4



With assistance, rest the medicine cabinet on the bottom mounting bracket and hold it in place.

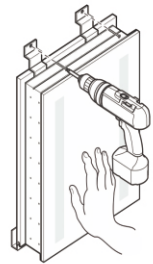
5



You can slide top mounting brackets to the left or right to achieve a desired position.

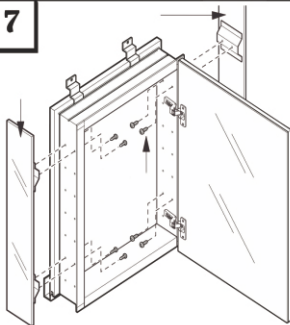
IMPORTANT:
Top mounting brackets must be attached to furring strip/channel or wall studs.

6



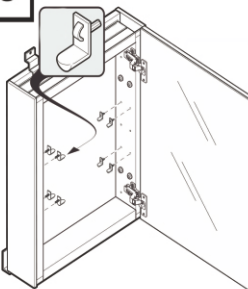
Attach the top mounting brackets to the wall using a drill.

7



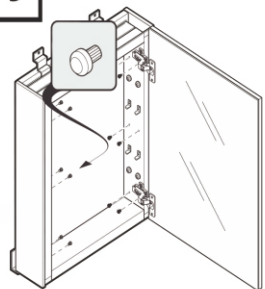
Attach mirrored side panels to the medicine cabinet using a screwdriver and provided screws

8



Insert clear snap in shelf clips into holes on the sides of the cabinet.

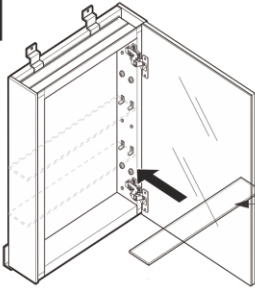
9



Insert clear plugs into the remaining/unused holes of the cabinet.

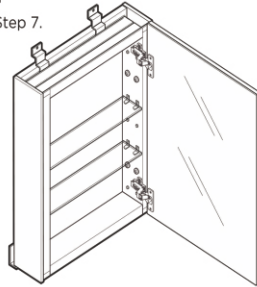
SURFACE MOUNT

10



NOTE: For more details on the shelf installation please refer to Page 5, Step 7.

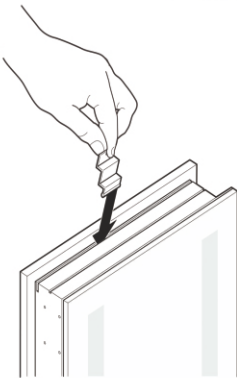
C



Connect the glass shelves (C) to the cabinet by pushing the side of the shelf in the left or right clip and snapping the shelf down.

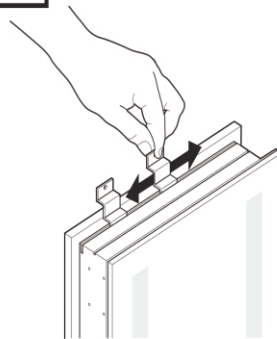
MOUNT BRACKET

1



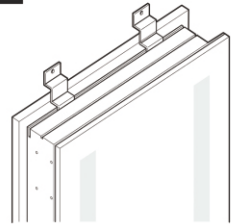
Slide top brackets into channel at the top of the cabinet.

2



Make sure top brackets are locked in the grooves.

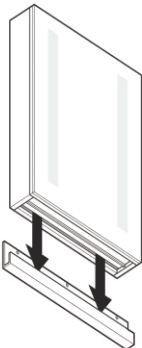
3



IMPORTANT:

Top mounting brackets must be attached to furring strip/channel or wall studs.

4



IMPORTANT:

Make sure cabinet is leveled and fully inserted into the groove of the bottom bracket.



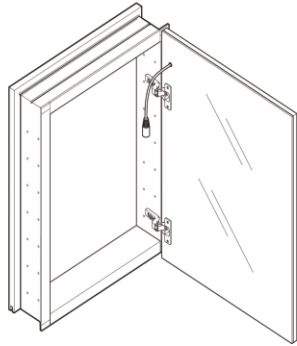
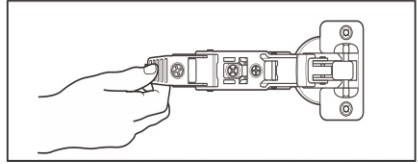
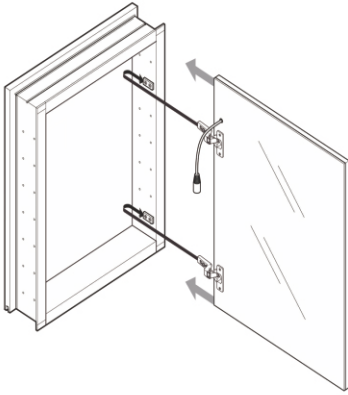
5

Test the fit of the cabinet before Final assembly.

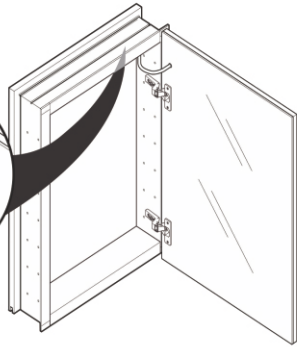
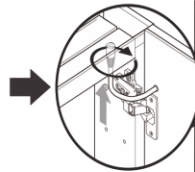
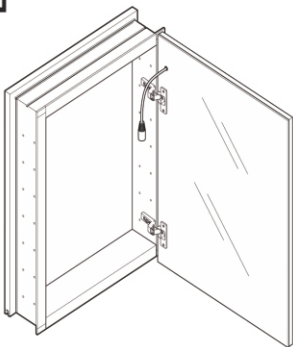
ELECTRIC WIRING: Be sure to provide enough wire to make the proper and safe connection to the Field/Power (see Page 5 for electrical connection instructions).

LAST STEPS

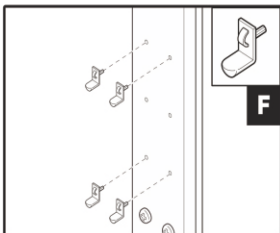
- 1** Slide the doors into place by pinching the end of the hinge.



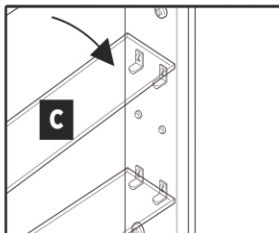
- 2** Plug the door into the cabinet.



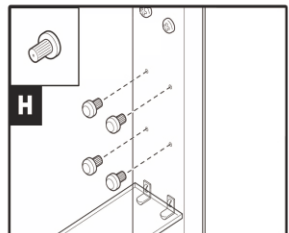
- 3** **3a.** Insert clear snap in shelf clips (F) into holes on the sides of the cabinet (A).



- 3b.** Push the side of the shelf (C) in the left or right clip and snap the shelf (C) down.

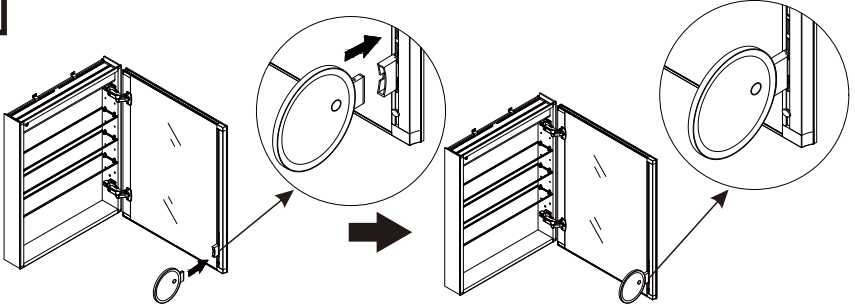


- 3c.** Insert clear plugs (H) into the remaining or unused holes



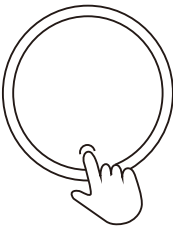
MAKEUP MIRROR

1



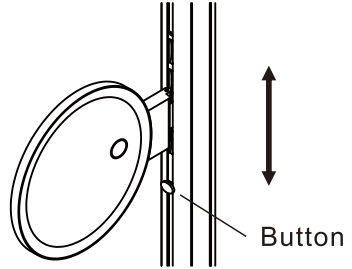
NOTE: Slide the makeup mirror into the place

2



Tap to turn ON/ OFF
Long press for dimming

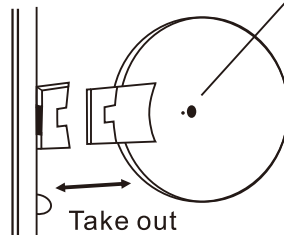
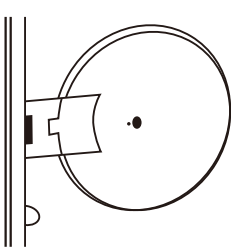
3



Press and hold the button to adjust
the height of the makeup mirror

4

Built-in spring, easy to take out the makeup mirror



Charging port

Charge it using the included USB cable
If the indicator is red, the battery is charging.
When the battery is fully charged, the indicator becomes green



AQUADOM Mirror Installation Guide

IMPORTANT SAFETY INSTRUCTIONS

When using an electrical furnishing, basic precautions should always be followed, including the following:



DANGER

READ AND FOLLOW ALL INSTRUCTIONS BEFORE USING THIS MIRROR.



WARNING

Risk of electric shock. Connect this furnishing to a properly grounded circuit only. See Grounding instructions.



WARNING

To reduce the risk of burns, fire, electric shock or injury to persons. Use this furnishing only for its intended use as described in these instructions. Do not use attachments not recommended by the manufacturer. Never drop or insert any object into any opening. Do not use outdoors.

GROUNDING INSTRUCTIONS:

This product must be connected to a grounded metal, permanent wiring system, or an equipment-grounding conductor must be run with the circuit conductors and connected to the equipment-grounding terminal or lead on the product.



WARNING

An Electrical option cabinet must be wired to a 20 Amp GFI (Ground Fault Interrupter) protected circuit when used in bathrooms and all other locations required by the National Electric Code.

PLEASE SAVE THESE INSTRUCTIONS FOR FUTURE REFERENCE



Guía de Instalación de Espejo AQUADOM

INSTRUCCIONES IMPORTANTES DE SEGURIDAD

Cuando de está usando equipo eléctrico, precauciones básicas deben seguirse, incluyendo las siguientes:



PELIGRO

LEA Y SIGUA TODAS LAS INSTRUCCIONES ANTES DE USAR ESTE ESPEJO.



ADVERTENCIA

Riesgo de choque eléctrico. Conecte este equipo a un circuito apropiado de tierra física. Vea las instrucciones de Aterrizado.



ADVERTENCIA

Para reducir los riesgos de quemadura, fuego, choque eléctrico o lastimar a alguien. Utilice este equipo únicamente para el uso previsto como se describe en estas instrucciones. No utilice accesorios no recomendados por el fabricante. Nunca deje caer o introduzca algún objeto dentro de cualquier abertura. No se use en el exterior.

INSTRUCCIONES DE ATERRIZAJE:

Este producto debe conectarse a una tierra metálica, a un de cableado permanente, o a un conductor de aterrizaje de equipos que debe correr con el circuito de conductores y conectados a una terminal general de aterrizaje de equipos.



ADVERTENCIA



Una opción eléctrica para el gabinete deba estar cableado a un circuito protegido con un Interruptor de Falla a Tierra (GFI) de 20 Amp cuando se usa en baños y en todas aquellas ubicaciones que requieran la aplicación del Código Eléctrico Nacional (NEC).

POR FAVOR GUARDE ESTAS INSTRUCCIONES PARA REFERENCIA POSTERIOR


FINAL ASSEMBLY

| ITEM | MODEL | FEATURE |
|------------------|------------------|--|
| MEDICINE CABINET | SIGNATURE ROYALE | 3D Lighting,Dimmer Switch,Defogger,Digital Clock , Outlet with USB port,Makeup mirror , Interior light |
| | ROYALE PLUS | Cold light,Dimmer Switch,Defogger, Outlet,Makeup mirror , Interior light |
| | EDGE ROYALE | Cold light, Dimmer Switch,Defogger, Outlet,Makeup mirror, Interior light |
| | ROYALE BASIC | Cold light,Dimmer Switch |
| | PACIFICA | Cold light,Dimmer Switch,Defogger, Outlet |
| MIRROR | DAYTONA | 3D Lighting,Dimmer Switch,Defogger,Digital Clock |
| | SOHO | Cold light,Dimmer Switch,Defogger |
| | EDGE | Cold light,Dimmer Switch,Defogger |


| | | |
|-------------|------------------------|----------------------------|
| 3D Lighting | Blue-cood 6500kelvin | SIGNATURE ROYALE , DAYTONA |
| | Yellow-Warm 3000kelvin | |
| | White-Mixed 4600Kelvin | |

1. Touch the Light button in order to turn the lighting mechanism on. 
2. Touch the Light button again in order to chose the desired light .(Cool ,Warm,,Mixed)
3. Touch and Hold the button in order to dim the currently selected light. 

| | | |
|------------|------------|--|
| Cold light | 6500kelvin | ROYALE PLUS,EDGE ROYALE,ROYALE BASIC,PACIFICA,EDGE |
|------------|------------|--|

1. Touch the Light button in order to turn the lighting mechanism on. 
2. Touch and Hold the button in order to dim the currently selected light.

| | | |
|------------|------------|------|
| Cold light | 6500kelvin | SOHO |
|------------|------------|------|

1. Touch the Light button in order to turn the lighting mechanism on. 
2. Touch the Light button again in order to chose the desired light .
(Surface light ,Backlight , Mixed)
3. Touch and Hold the button in order to dim the currently selected light.

Defogger Button :

Defogger button can be found on the inside of the cabinet . Top part of the frame.
Mirror Defogger is found on the bottom middle of the frame

How to Customize the Digital Clock

Facing the mirror place your finger on the ON/OFF button.
Press and hold the button to engage the clock's program mode.
In program mode,the clock will go through 4 number fields with a 3 second break inbetween .
To set the time , press the button again while the number in flashing.
The reset button can be found on the bottom of the frame under the clock .



AQUADOM Installation Guide

WARRANTY

AQUADOM warrants to the original purchaser that it will, at its election, repair, replace, or make appropriate adjustment to products made by this company shown to have significant defects in material or workmanship which are reported to AQUADOM in writing within one (1) year from the date of delivery. AQUADOM is not responsible for installation costs.

The warranty is void in the event the product is damaged in transit, or if damage or failure is caused by abuse, misuse, abnormal usage, faulty installation, damage in an accident, improper maintenance, or any repairs other than those authorized by AQUADOM.

At the expiration of the one-year warranty period, AQUADOM shall be under no further obligation under any warranty, expressed or implied, including the implied warranty of merchantability.

AQUADOM shall not be liable for any consequential damages arising out of or in connection with the use or performance of its products. Some states do not allow limitations on how long an implied warranty lasts or do not allow the exclusion or limitation of incidental or consequential damages, so the above limitation or exclusion may not apply to you.

Any liability against AQUADOM under any implied warranty, including the warranty of merchantability, is expressly limited to the terms of this warranty. Permission to return any merchandise under this warranty must be authorized by AQUADOM and returned prepaid by the purchaser.