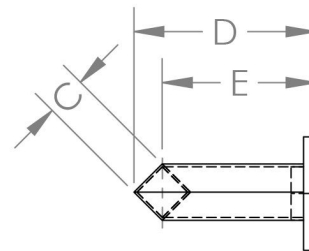
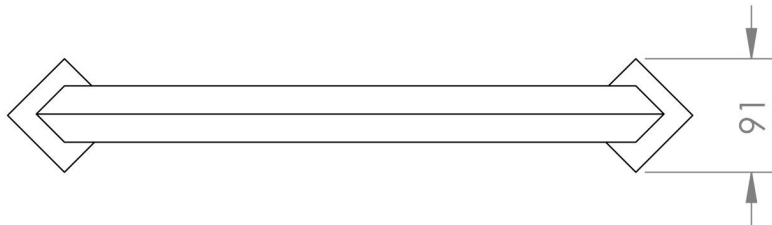
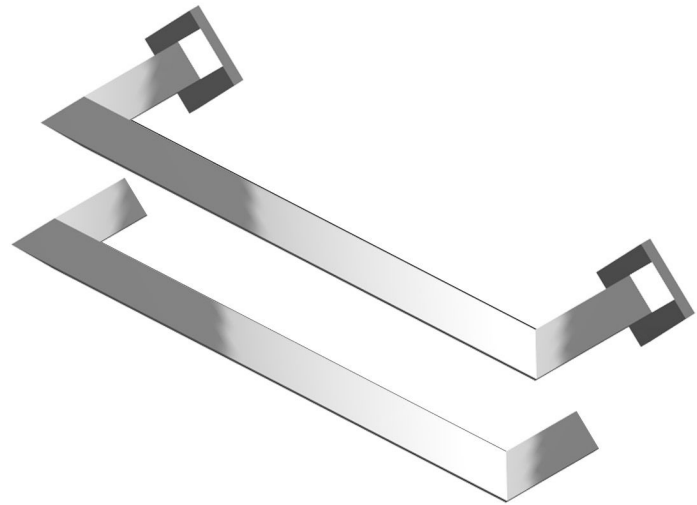
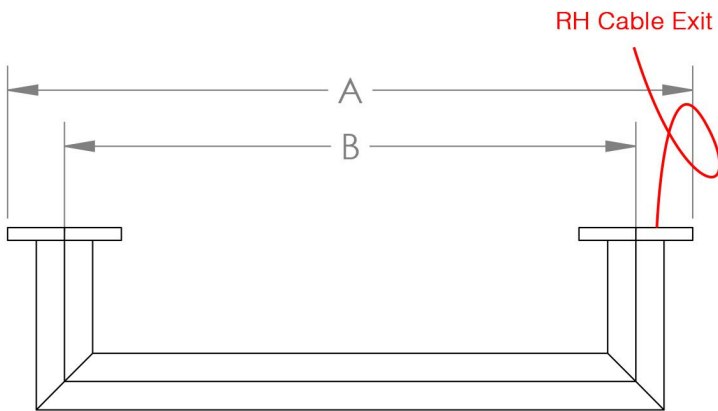


# THE STERLINGHAM CO. LTD.

## Single Rail Order Guide

CODE: CRAF - 1 - E - WIDTH - DEPTH - FINISH

- MACHINED FROM HIGH QUALITY BRASS
- INNOVATIVE DRY LINE CABLE USED
- LOW ENERGY ELECTRIC
- NO PLUMBING REQUIRED
- 100% GUARANTEE NOT TO LEAK



**CHOOSE FROM FINISHES:** UN-LACQUERED BRASS (UB) BRUSHED BRASS (BB) POLISHED CHROME (CP) POLISHED NICKEL (NP) BRUSHED NICKEL (BN)  
 POLISHED GOLD (GP) ANTIQUE GOLD (AG) GUN METAL (GM)  
 LIGHT / MEDIUM / DARK BRONZE (L / M / D)B LIGHT / MEDIUM / DARK ANTIQUE BRONZE (L / M / D)AB  
**POWDER COAT:** MATT WHITE MATT BLACK

A: \_\_\_\_\_ mm (minimum: 500mm, maximum: 1000mm)  
 B: \_\_\_\_\_ mm (only A or B to be filled in)  
 C: 32mm mm (32mm tube ONLY)  
 D: \_\_\_\_\_ mm (minimum: 110mm)  
 E: E = D minus 23mm mm

**FOR INSTALLATION ONLY**  
 (TO FIND CENTER - CENTER)

A minus 50mm

VOLTAGE: 12V 24V 230V OTHER: \_\_\_\_\_ VOLTS

CABLE EXIT: LEFT / RIGHT

BACK PLATE: YES / NO (If no back plate, A dimension will be taken as edge to edge of tube)

FINISH: \_\_\_\_\_

THIS FORM MUST BE FULLY COMPLETE AND SUBMITTED TO A REGISTERED RETAILER. IT IS THE RESPONSIBILITY OF THE RETAILER TO ENSURE ALL INFORMATION IS PROVIDED ON THE FORM; INCOMPLETE FORMS MAY RESULT IN DELAYS TO ORDER PROCESSING.