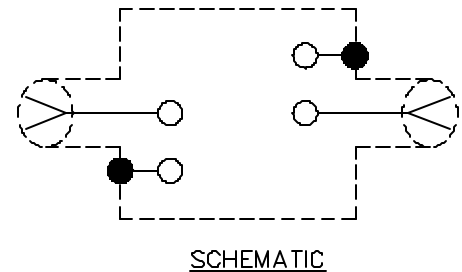
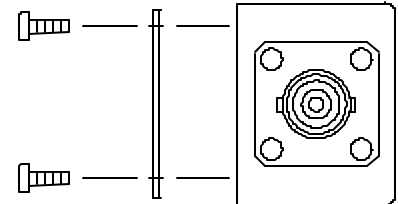
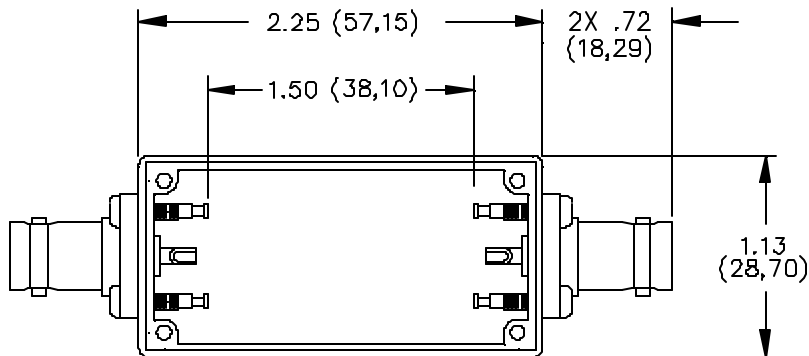


Model 2390 Size A Aluminum Box With Cover BNC Female/Female



MATERIALS:

Connector: BNC Receptacle

Body: Tarnish Resistant Plating, Center Contact: Male - Gold Plated Brass, Female - Gold Plated Beryllium Copper

Solder Turret Terminal Screws: Steel, 4 ea. #4-40

Shielded Housing: Die cast aluminum alloy A380 or A384

Finish: Blue paint per Federal Standard 595 #25109 over Phosphoric Etch

Cover: .040 Thick aluminum #1100-H14

Finish: Clear Anodized

Screws: Steel 4 ea. #2-32 x 1/4" Pan Head, self-tapping.

RATINGS:

Operating Voltage: Inner conductor/shield: 335 VRMS Max.

Operating Temperature: -55°C to +150°C

Nominal Impedance: 50 Ohms

ORDERING INFORMATION: Model 2390

All dimensions are in inches. Tolerances (except noted): .xx = ±.02" (.51 mm), .xxx = ±.005" (.127 mm).

All specifications are to the latest revisions. Specifications are subject to change without notice.

Registered trademarks are the property of their respective companies. Made in USA

Mouser Electronics

Authorized Distributor

Click to View Pricing, Inventory, Delivery & Lifecycle Information:

[Pomona:](#)

[2390](#)