

**SENSORS & SOFTWARE®**   
from **RADIODETECTION**

**LMX100™**

# Utility locating with GPR made simple

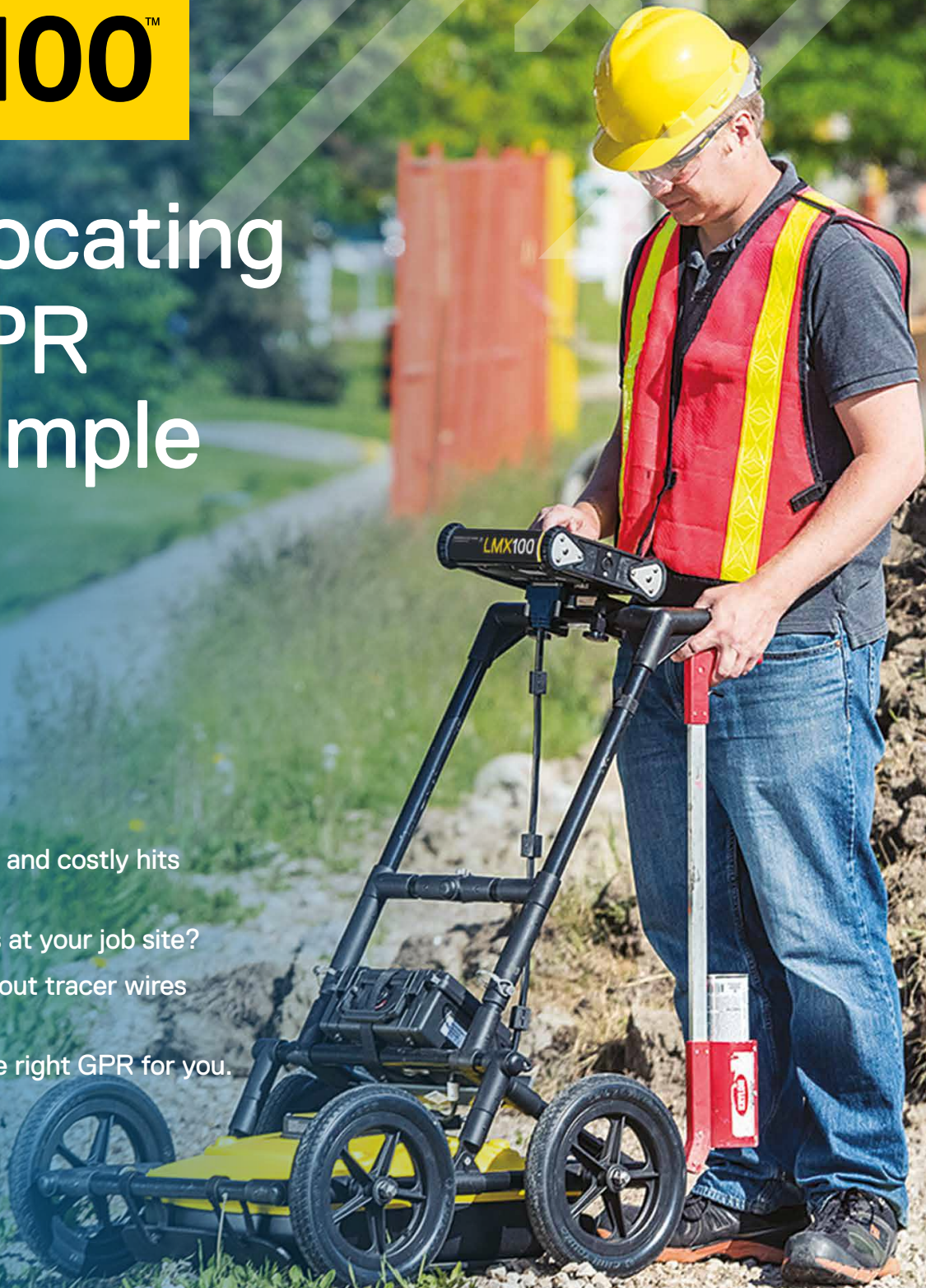
Trying to avoid dangerous and costly hits  
to critical utilities?

Want to find more utilities at your job site?

Non-metallic utilities without tracer wires  
giving you trouble?

If so, then LMX100™ is the right GPR for you.

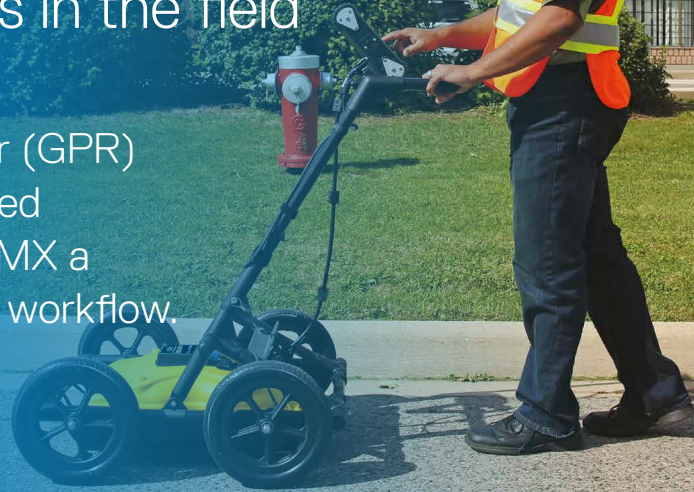
**SPX**   
TECHNOLOGIES



# LMX100™ overview

The simple, efficient way to  
**Locate & Mark™** utilities in the field

LMX® Ground Penetrating Radar (GPR) systems are designed & optimized for utility locating, making the LMX a natural addition to your locating workflow.



LMX GPR systems complement traditional pipe and cable locators and allow you to Locate & Mark:

- Metal utilities, including pipes and cables
- Non-metallic pipes, including PVC and asbestos cement
- Concrete storm and sewer systems
- Utilities where installed tracer wiring has failed
- Underground storage tanks and drainage tiles
- Septic system components
- Non-utility structures such as vaults, foundation walls and concrete pads



# LMX100 features

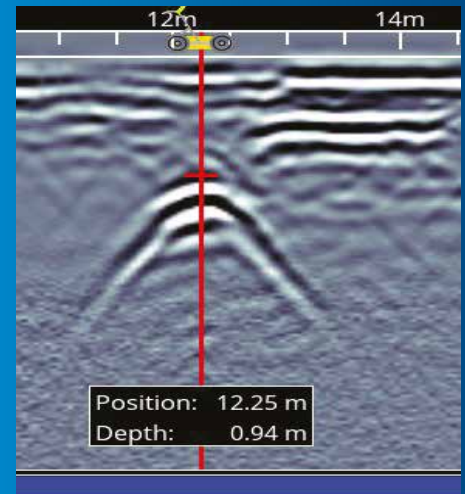
Rapidly locate **metallic**  
and **non-metallic** utilities

Enhance your productivity

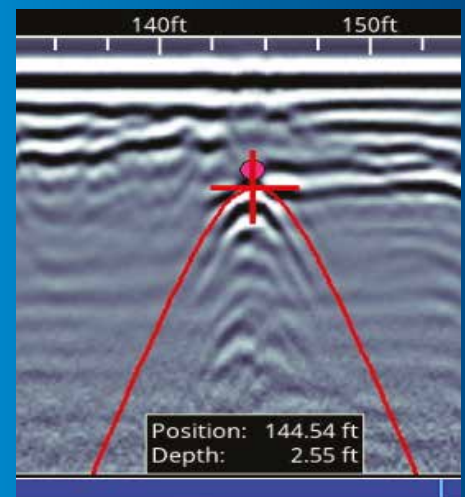
No complex settings – Just press Start and push the cart



## Pinpoint Depth & Location



## Easy Depth Calibration



Use hyperbola-fitting to ensure accurate depth measurements and backup over the target to display its location and depth.

## Dynamic Stacking (DynaQ®)

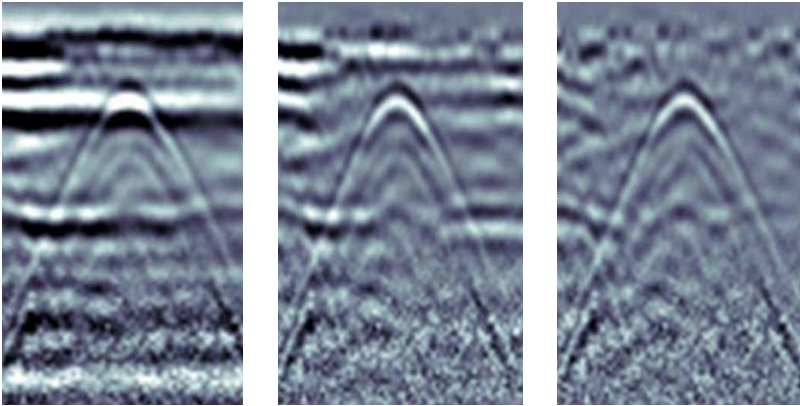


Better data quality with DynaQ. The LMX automatically adjusts stacking (averaging) based on your survey speed.

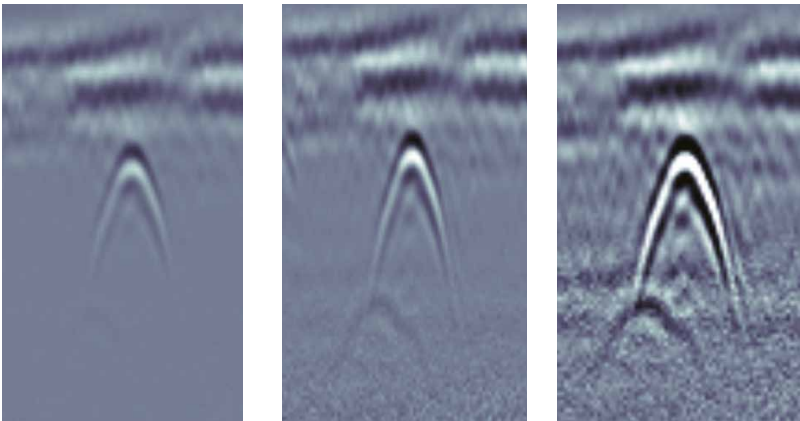
- White = No data (too fast!)
- Yellow = Moderate quality
- Light blue = Better quality
- Dark blue = Highest quality

# Increase your target confidence in the field with image optimization

## Preset Filters

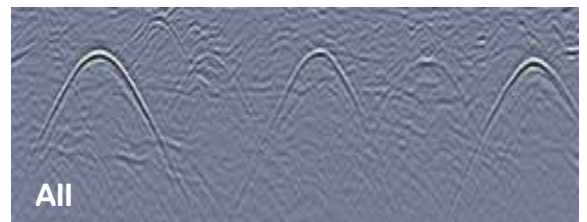
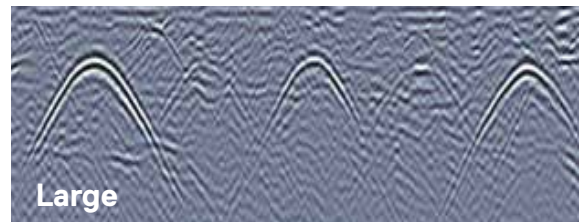
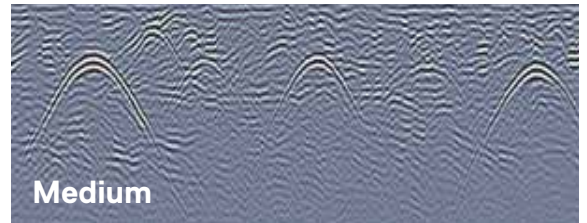
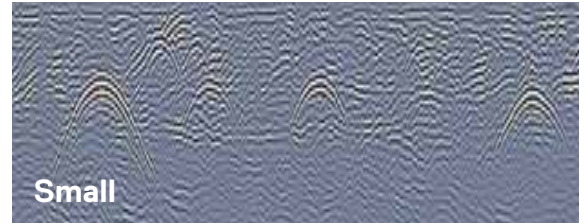


## Adjustable Gain



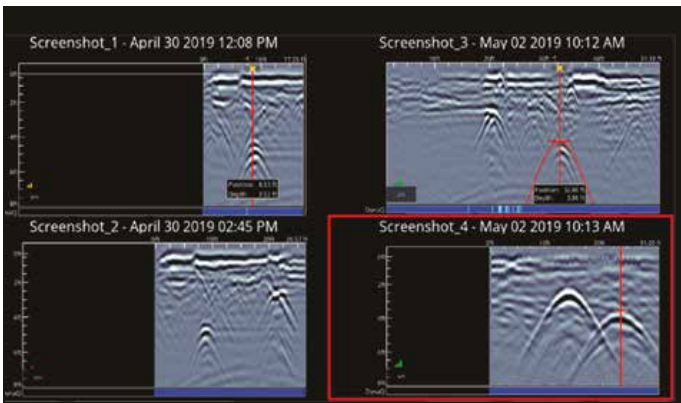
Optimize visibility of your targets with preset filters & gain.

## Dynamic Target Enhancement (DynaT™)



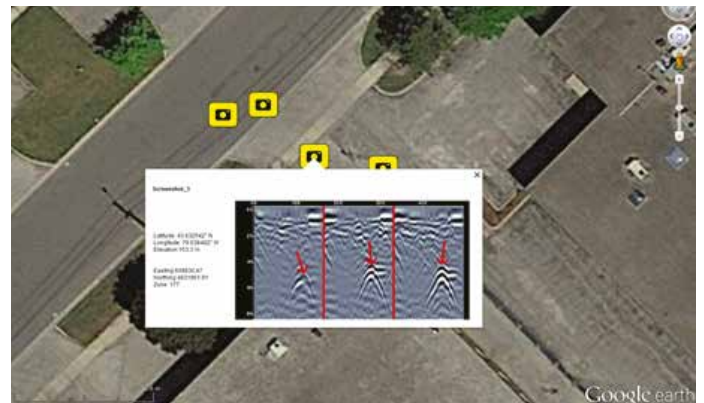
Enhance small, medium & large targets.

## Get faster deliverables



## In-field Screenshot Gallery & Wi-Fi mini-reports

Manage & review your screenshots and email them in a Wi-Fi mini-report from the field to share key collection information and images.



## Geo-tagged information for reports & archiving

All screenshots are geo-tagged and exported in a KMZ file that is easily displayed in Google Earth.™



### High visibility touch screen display unit

- Free lifetime system software updates
- User selectable languages
- US Standard and Metric units



### Lightweight Fiberglass Cart Frame

- No metal parts that would interfere with GPR signals
- Rugged, maneuverable, all-terrain cart



### On-site Reports

- Produce instant on-site reports from your display unit



### Lead Acid Gel Cell Battery

- Long lasting
- Swappable
- Locally available



### USB

- USB for easy data transfer



### Integrated GPS

- Integrated GPS receiver for geo-referencing data



### Wi-Fi

- Built-in Wi-Fi capability



### GPR Sensor

- Patented ultra-wideband (UWB) 250 MHz GPR antenna
- DynaT for Dynamic Target enhancement
- Offers perfect balance of depth penetration (up to 8 m/26 ft) & high resolution



### Odometer

- To collect data at equal intervals



Weight & Dimensions	
Size: 100 x 70 x 115 cm (39.4 x 27.6 x 45.3 in)	
Weight: 22 kg (48 lbs)	
Display Unit size: 21 cm (8 in) diagonal	
Power	
12 volt sealed lead acid gel cell	
Battery Capacity: 9.0 Ah	Battery Weight: 3.6 kg (7.9 lbs)
Battery Life: 4-6 hours	Charger: 110-240V

Environmental & Temperatures	
Ruggedized, environmentally sealed unit and connections	
IP65	Operating temperature range: -40°C to +50°C (-104°F to 122°F)
Regulatory Specifications	
Meets FCC 15.509, IC RSS-220 and ETSI EN-302066	
Data Storage	Depth
10,000+ screenshots	Up to 8 meters (25 feet)

## Useful resources to make the most of your LMX:

- [LMX100 training videos](#)
- [Utility Locating with GPR \(Nulca-accredited\) interactive and online course \(SensoftU.com\)](#)
- [Webinars and free online resources](#)
- [Learn more about our training offerings](#)

## Our Mission

Provide best in class equipment and solutions, to prevent damage to critical infrastructure, manage assets and protect lives.

## Our Vision

To be the world's leader in the management of critical infrastructure and utilities.

## Our Locations



### USA

Raymond, ME  
Kearneysville, WV

### Canada

Mississauga, ON



### Europe

United Kingdom **HQ**  
France  
Germany  
The Netherlands



### Asia Pacific

India  
China  
Hong Kong  
Indonesia  
Australia

🕒 MON - FRI 8am - 4pm WST

☎ 08 9335 1718

✉ team@laserman.com.au

📍 60 Knutsford Street Fremantle WA 6160

🌐 www.laserman.com.au