

Automatic Rotary Laser RL-87L

• levelling

• aligning

• plumbing



LE-72

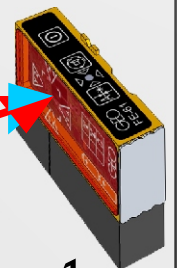
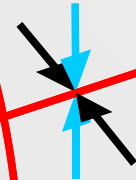
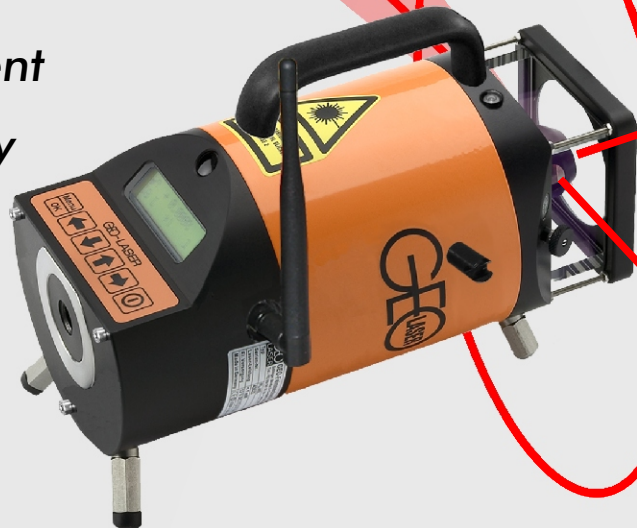
FE-53



• search for alignment

• find alignment

• lock alignment
automatically



FE-61

Automatic Rotary Laser RL-87L

The ideal one man level, line and plumb laser The RL-87L

is an all-round laser for horizontal and vertical use capable of electronic self-levelling over three axes. Equipped with a beam split prism in the rotor head, it can also be used as a square or plumb laser. It emits a stationary or rotating laser beam, which turns into a light plane.

Performance features

● Fully automatic

Automatic levelling and cut-out in case of low battery or jerky movements.

● Special laser beam quality

Diode laser with visible laser beam, high-powered lens, high life expectancy and low power consumption.

● Robust metal housing

Plastic-coated, swept and filled with nitrogen, 100% watertight.

● Lithium ion rechargeable battery

Operation time to 28 hours with one charge.

Rechargeable in max. 5 hours without having to take out the battery.

● Manual rotor adjustment

Easy operation for exact positioning of the laser beam, rotor fixing and plumbing down with bubble level in rotor head.

● Automatic fixing of the laser light plane

By pressing a button automatic search and fixing of the laser light plane of the Y axis. The function is as simple as it is ingenious:

The rotating laser beam is received by the locking receiver FE-53 and then automatically directed to the position fixed before.

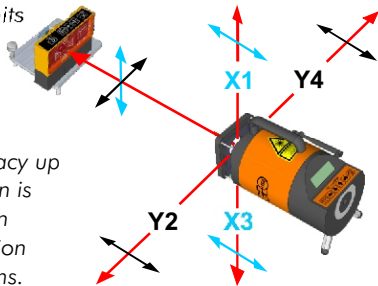
Deviations are detected and corrected immediately.

Accuracy to +/- 0.5 mm/100 m.

● Automatic fixing of the plumb beam

As soon as the laser beam hits the locking receiver FE-61, it is automatically directed to the position fixed before.

Deviations are detected and corrected immediately. Accuracy up to ± 1 mm/100 m. Operation is possible horizontal, vertical, in alignment, with every inclination and even on swaying platforms.



● Checking and adjustment

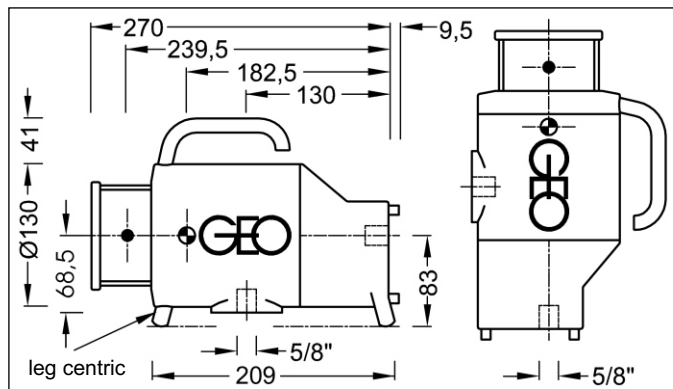
Simple, fast and accurate!

In conjunction with the LE-72, the automatic adjustment of the horizontal light plane is comfortably possible.

This offers more security and increases accuracy.

● Reliable system accessories for the best possible operation.

Dimensional sketch



Technical specifications

Laser class:	2
Output power plumb and rotating beam:	< 1 mW each
Laser type:	diode, visible red, 635 nm
Beam diameter:	13 mm at laser
Range depending on circumstances:	to 200 m, \varnothing 400 m
Automatic function:	horizontal and vertical
Automatic function can be switched off:	yes, either one or both axes
Rotor speed:	adjustable in steps of 0 to 800 RPM
Self-levelling range:	$\pm 5\%$
Direction setting:	$\pm 5\%$
Permissible deviation:	± 5 mm/100 m
Locking automatic laser light plane:	up to 200 m with receiver FE-53
Locking automatic plumb beam:	up to 100 m with receiver FE-61
Operating time with 7.4 V DC Li Ion recharge. battery:	to 28 hours
External power supply:	11 to 14 V DC with cable 0117.02
Low battery cut-out:	yes
Watertight:	to 3.5 m
Temperature range:	-10° C to +50° C
Weight:	3.4 kg
Adjustment:	possible in the field without having to open the device
Guarantee:	24 months

Standard delivery package

No.	Order No.	Type	Description
1	0001.675	RL-87L	Rotary laser
2	0037.18	NE-80	Power supply/Battery charger
3	0077.36		Transport case
1-3	0001.675.1		RL-87L with standard delivery package



Optional accessories

No.	Order No.	Type	Description
1	1035.27	Strom	Laser receiver with digital data display
2	0009.39.1	LE-72	Laser receiver with digital data display
3	0009.36.1	FE-53	Locking receiver for laser light plane
4	0009.70.1	FE-61	Locking receiver for plumb beam
5	0026.07	FB-10	Two-way radio control
6	0117.02		12 V Li Ion connection cable
7	0061.01.2	BW-80	Base plate/Wall mount
8	0122.01.1	ST-05	Facade construction system



GEO - partner of the construction industry for 50 years



GEO-Feinmechanik GmbH

Laser for civil and underground engineering, interior works, machine control

Postfach 13 01 64
45445 Mülheim an der Ruhr

Telephone +49 (0) 208-9 93 57-0
Facsimile +49 (0) 208-9 93 57-25

Solinger Str.8
45481 Mülheim an der Ruhr

www.geo-laser.de
geo-team@geo-laser.de

Subject to change. Made in Germany.

Date: 05/2013