

Technical Data

Fluke VT06 & VT08 Visual IR Thermometer

New Palm-size Device, Light and Clear



- Wide range of -20 °C to 400 ° C
- 2 hours fast charging time, 8 hours battery life
- Single-level menu interface, Open-and-View
- Quickly locate the target under test with laser pointer (except JP models)
- Auto high/low temperature capture

Higher resolution, greatly improving temperature measurement efficiency

The 120 x 90 resolution model has more than 10000 infrared pixels, which is 12 times higher than the previous generation* and rich temperature details help you find problems faster.

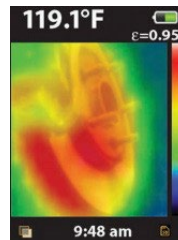


Image from the previous generation product VT04* (28×28 pixel)

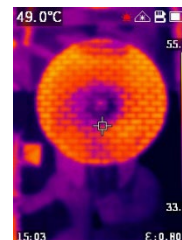


Image from VT08 (120×90 pixel)

Difficult to distinguish between false and real? Infrared and visible blending can help!

VT08 is equipped with both infrared and visible light cameras and blend a visual image with infrared heat map overlay in real-time to distinguish the object. In addition, your customers can quickly adjust the blend degree according to their requirements, or switch to the Picture-in-Picture mode.



Advanced functionality in the size of a spot thermometer

Portability is one of the advantages of VT06 / VT08 thermal Thermometer. It is almost comparable to the point thermometer in terms of weight and size. Great abilities with a small size, you can get a leap in temperature measurement experience from point to area.



Drop-proof, dust and water resistance, suitable for harsh industrial environments

Built with legendary Fluke ruggedness, VT06/08 features IP65 ingress protection and 2-meter drop test. It can provide stable and reliable test results even if it is exposed to the sun and rain, or it is dropped.



	VT08	VT06
Thermal image and optics		
Infrared resolution	120×90	
IR frequency band	7.5~14 μm (long wave)	
Frame rate	9Hz	
Thermal sensitivity/NETD	< 60 mk	
Field of view (H x V)	50° x 37.5°	
Spatial resolution	7.6 mrad	
Focus system	Focus free	
Minimum focusing distance	0.5 m (19.7 in)	
Image display and storage		
Image mode	Thermal image Visible image PIP	Thermal image
Palettes	Ironbow, Blue-Red, High-Contrast, Amber, Hot Metal, Grayscale	
Internal storage	14 GB (>50000 images)	
File format	JPEG compression format (.jpg)	
PIP mode	Yes	No
Temperature measurement		
Temperature range	-20 °C to 400 °C [-4 °F to 752 °F] (not specified for below -10 °C)	
Temperature accuracy	±2°C or 2% @ 23°C±5°C, whichever is greater	
Emissivity	Adjustable	
Background temperature compensation	Yes	
Auto high-/low-temperature capture	Yes	
Center point temperature	Yes	
Alarm	Maximum/minimum temperature alarm in full screen	
Interface and lens		
Visible light lens	Yes	No
Flashlight	Yes	No
Laser sighting	Yes	
Type-C interface	Yes	
Tripod interface	Yes	
Power system		

Battery type	Rechargeable Li-ion battery, unremovable
Battery operation time	≥5 hrs (VT08) ≥8 hrs (VT06) Actual battery life depends on environment and settings
Charging Time	< 2.5 hrs to full
Battery charging temperature	0 °C to 50 °C
Battery charging system	Charge in the machine (the battery is not removable)
AC adapter	Include power supply, universal adapter Output: 5 VDC, 2 A
Power saving mode	Yes

	VT08	VT06
Environmental specifications		
Operating temperature	-10 °C to 50 °C	
Operating altitude	2000 m	
Storage altitude	12 000 m	
Others		
Warranty	1 year	
Standard accessories	Wrist strap, quick reference guide, charger + adapter, Type-C data cable,	
Display	6.096 cm LCD	
Size	20.4 cm x 6.6 cm x 7.6 cm	
Weight	0.36 kg	0.35 kg
Relative humidity	≤90%, non-condensing	
Safety		
Safety standards	IEC 61010-1: Pollution Degree 2	
Laser	IEC 60825-1: Class 2, 650 nm, <1 mW	
Battery	IEC 62133-2, UN 38.3	
Protection class	IEC 60529: IP65 (with Type-C port closed)	
Drop test	2 m	
Electromagnetic Compatibility (EMC)		
International	IEC 61326-1: Industrial Electromagnetic Environment CISPR 11: Group 1, Class A	

Ordering Information

5341941 Fluke-VT06/APC
5341952 Fluke-VT08/ APC

Standard accessories

Wrist strap for main unit
Quick reference guide
Charger + Adapter
TYPE-C data cable
Data-downloading card



Fluke. *Keeping your world up and running.®*

Fluke Corporation

PO Box 9090, Everett, WA 98206 U.S.A.

Fluke Australia

Unit 16/7 Anella Avenue Castle Hill, NSW,
2154 Australia

Phone: 1300 1 FLUKE (35853)

Fax: +61 2 8850 3300

Email: auinfo@fluke.com

Website: www.fluke.com.au

©2021 Fluke Corporation.

Specifications subject to change without notice.

Printed in U.S.A. 6/2021 210604-en

Modification of this document is not permitted without written permission from Fluke Corporation.

© 2021 Fluke Corporation. 5/2021

specifications subject to change without notice.