



**LIGHTHOUSE**®  
Controlled Environments

**LITE TENTS**

**Tivax Zips**

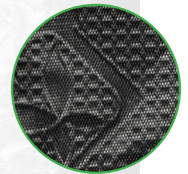
Double lined quality zips that are easy-to-use with no snagging and offering good light-proofing.

**Apertures**

All apertures feature draw strings and are double lined for light-proofing with 360 degree passive air vents with mite-proof netting to offer uniform distribution of air flow.



Woven Polyamide (PA)  
extremely strong - 210 Denier



Black-out light-proof layer



Silver coated metallised UltraLux  
film - durable and highly reflective

**Unique UltraLux**

Manufactured using the highest quality non-toxic and environmentally friendly plasticisers, this 3 layer fabric is extremely strong, 100% light-proof and has some of the highest reflective qualities on the market. Tests show that it offers more than 30% extra reflectivity when compared to rival products.

**High reflectivity means**  
higher growth rates and  
higher production levels.

Wipe clean finish.

With the option of both budget and premium versions, LightHouse portable grow tents and accessories are designed to offer the best indoor self-contained growing environment available, designed by growers for growers, with the benefits and features you'd like, but which were never previously combined in such a comprehensive way. With the added benefit of easy assembly, the range is strong, durable and efficient.

LightHouse LITE is the budget tent, for the grower who wants no frills. It offers a simple, lightweight frame that incorporates nylon corners, but still has multiple choices of ducting and cable glands all with double seals.

The attention to detail in the design of the LightHouse range extends through both the premium LightHouse MAX and the budget LightHouse LITE, both of which benefit from a new reflective material called UltraLux, which offers up to 30% higher reflectivity than traditional products, while the Tivax zips fitted to all doors have proven ability to offer a quality seal when closed.

A range of LightHouse accessories is also available from plant support netting through to accessory pouches and harvest dry racks.



**LIGHTHOUSE**®

Controlled Environments

**LITE TENTS**

**LITE**

### Guarantee

LITE 12 months

MAX 24 months

### LightHouse LITE Core Specification:

- Tri Layer 210D material with the special LightHouse UltraLux reflective liner
- Quality Tivax double lined zips, easy-to-use with no snagging and offering good light proofing
- Main frame made from 16mm steel poles with nylon corners
- One piece waterproof insert tray
- All outlets for air and cables are double lined and light-tight with pull toggles on each lining
- 2 x Filter straps
- Door clips on all doors for fastening when open

### LITE 1M

Size: 1m x 1m x 2m

Air extraction through the roof via a 250mm (10") sock

2 x inline 250mm (10") socks for use with air-cooled lighting

3 x passive air fine (anti-mite) mesh vents at base with light-proof covers when not in use

#### Recommendations:

Ideal for 1 large plant, 4 smaller plants or for use as a drying storage environment when used with the LightHouse DryNet

For single lamp set up - 400w HID

Exhaust fan around 350m<sup>3</sup>



### LITE 1.2M

Size: 1.2m x 1.2m x 2m

Air extraction through the roof via a 250mm (10") sock

2 x inline 250mm (10") socks for use with air-cooled lighting

3 x passive air fine (anti-mite) mesh vents at base with light-proof covers when not in use

#### Recommendations:

Ideal for 4 mid-size plants, fits most growing systems and is ideal for the PLANT!T® aeros IV

For single lamp set up - 600w HID

Exhaust fan around 440m<sup>3</sup>







**LIGHTHOUSE**®  
Controlled Environments

**LITE TENTS**

**LITE**

### LITE 2.4M

Size: 1.2m x 2.4m x 2m

Air extraction through the roof via a 250mm (10") sock

2 x inline 250mm (10") socks for use with air-cooled lighting

2 x passive air fine (anti-mite) mesh vents at base with light-proof covers when not in use

#### Recommendations:

Ideal for 2 large plants or 8 mid-size plants

Two lamp set up - 2 x 600w HID

Exhaust fan around 700m<sup>3</sup>



### CLONE 1

2 tents in one, on its side it's a propagation tent, stand upright and move the lighting bars to have a great little stock plant tent.

Size: 0.7m x 0.9m x 0.5m

Air extraction through the roof via a 125mm (5") sock

1 x passive air fine (anti-mite) mesh vents at base with light-proof covers when not in use

#### Recommendations:

Ideal for 2 large ROOT!T® propagators and 2 trays of Cultilene CRB cubes

Use with PowerPlant® SunMate Propagate or ROOT!T® T5 series lamps

