

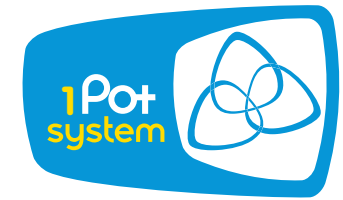
### Ensuring that the AQUAvalve5 floods and drains correctly

- 1** Making sure your AQUAvalve5 floods and drains correctly is simply achieved and only takes a few seconds.
- 2** Hold the AQUAvalve5 at eye level so that you can see the silicone fitted to the top float resting on the hole below it.
- 3** The silicone must create a tight seal when touching the hole.
- 4** If it looks like it is not sitting parallel on the hole below, simply lift the top float and apply pressure to one side of the silicone, drop the float and hold at eye level again. Repeat the procedure if necessary.

### Care and maintenance

- 1** At the end of your growing season, clean the AQUAvalve5 using warm soapy water. Using an old tooth brush will help.  
  
The AQUAvalve5 is easily disassembled. The top float will slide all the way across and the bottom float is unclipped from its pivoting position. The circular discs fitted to the top float can also be removed by using pliers to grip the raised point.  
  
At this point it is advisable to remove the silicones to avoid them being lost.
- 2** It is also handy to have a paper clip or pipe cleaner to hand so that you can push it through the AQUAvalve5 nozzle, this will remove any lime scale build up that may have occurred during the growing season.  
  
Blowing through the AQUAvalve5 nozzle will also help to remove any build up. Do not under any circumstances use a drill & drill bit to clear the AQUAvalve5 nozzle.  
  
**This will potentially damage the AQUAvalve5 beyond repair.**

## Your IPot system set-up guidelines



Allow your plants to establish before turning your system on.



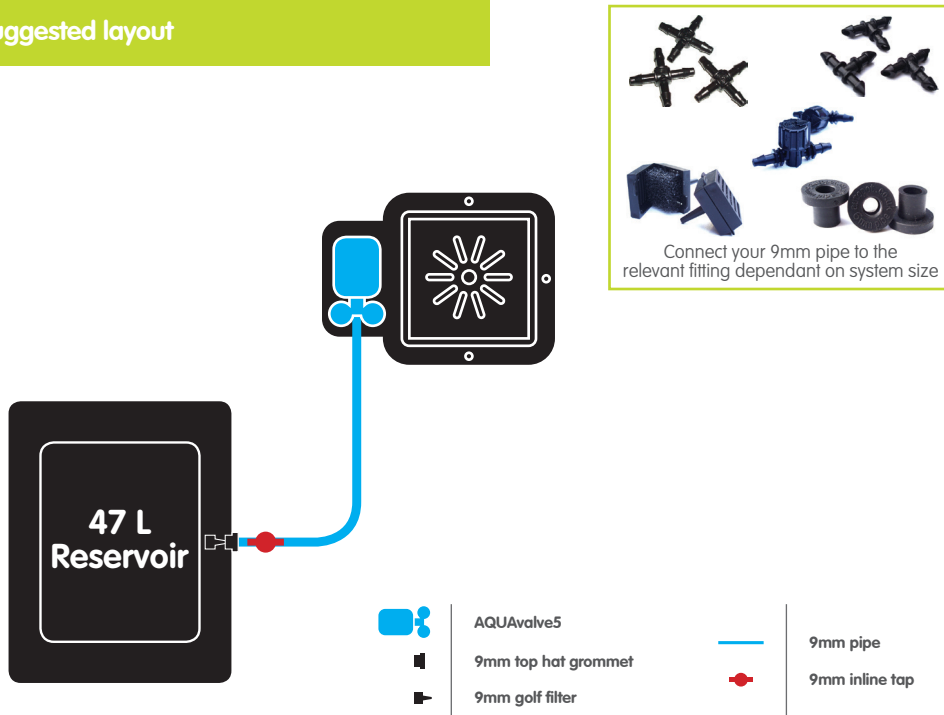
## 1Pot system contents

- 1x 47 L reservoir and lid
- 1x 1Pot tray and lid
- 1x 15 litre pot
- 1x AQUAvalve5
- 1x 9mm top hat grommet
- 1x 9mm golf filter
- 1x 9mm inline tap
- 1.5 metres of 9mm pipe
- 1x marix disc
- 1x root control disc

Reference: 9mm pipe - Outside  $\varnothing$  9mm/Inside  $\varnothing$  7mm

## Plan views and options

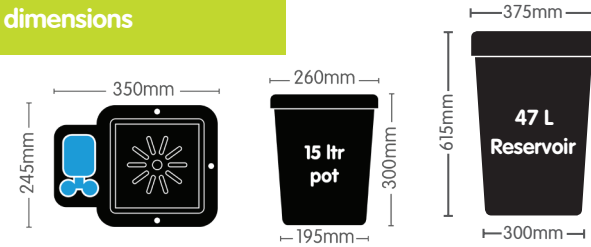
### Suggested layout



### Advice

- Pot up your plants, water through, then allow your plants to establish in the pots for a period of 7 to 10 days before turning your system on. This will encourage a stronger and healthier root system.
- Always raise your tank to a minimum of 150mm above the highest AQUAvalve and re-fill the tank when there is approximately a 1/3 of the solution left - NEVER ALLOW THE TANK TO RUN EMPTY.
- For best results, we recommend mineral fertilisers. Do not use organic fertilisers, as they have a tendency to block small pipe work.
- Clean all substrate from the bottom and sides of the pots before placing in each tray. This will ensure your system is clean from the start.
- Always use free draining substrates, for example: soil/perlite, coco/perlite, soil/clay pebbles, coco/clay pebbles, rockwool/clay pebbles.

## 1Pot dimensions



## 1Pot setup instructions

- Put black marix disc in pot
- Fill pot with medium and pot up plants.  
Water through pot and allow to drain outside the tray.
- Remove collar  
Push 9mm pipe through collar and attach to AQUAvalve nozzle  
Rescrew collar - **DON'T overturn...** when you feel it grip **STOP**
- Connect AQUAvalve so 'half moon' is on T section in the tray
- Position tray so it is level  
Insert root control disc **Gold face up**
- Cut 9mm/16mm pipe to appropriate length
- Push 9mm top hat grommet into tank, then push 9mm pipe through grommet
- Inside the tank push 9mm filter into 9mm pipe
- Place pot in the tray, make sure it is **CLEAN!**  
Place lid over valve onto tray

Using your front instruction sheet, repeat the module set up instructions for the number of trays.

**Allow your plants to establish for 7-10 days before turning system on**

### Advice

If you require any guidance email - [mail@autopot.co.uk](mailto:mail@autopot.co.uk)