

Crack Shot Drum Pump

DRUM PUMP SPECIFICATION:

The Crack Shot Drum Pump is a double diaphragm-Teflon lined pump capable of moving 100+ K.U. adhesive liquids through a ½" discharge system and re-directional emulsion enhancement system with no clogging, adverse flow factors or emulsion shearing. It requires air pressure to operate system: Minimum 35 PSI-Maximum 120 PSI. The Crack Shot is designed for use for thixotropic asphalt emulsion sealants and Gap Crete™ concrete joint and crack sealant. The wand has a ½" threaded discharge opening that can be reduced down, if necessary, to utilize multiple application nozzles and tips offered by national manufactures such as Graco for different sized joints/seams. The optional Surge Bottle Assembly MUST be used when using pump with Gap Crete™.

INSTRUCTIONS FOR PUMP OPERATION:

- 1) Remove drum lid and place retrofitted lid onto drum.
- 2) **Be sure wand handle trigger is in closed position.**
- 3) Hook up air source.
- 4) Set pump regulator at 80 P.S.I. or less.
- 5) Open circulation valve on pump with wand handle trigger in closed position. Allow product to circulate through system for 5 minutes to mix product before cracksealing.
- 6) Close circulation valve to about 80% closed, then squeeze wand trigger to desired flow to begin applying cracksealant.
- 7) When pump is not running, be sure the intake tube is submerged in the drum of product. Place end of wand in 5 gallon pail of water when not in use – this will keep product from drying on wand or thickening within the system, causing blockage or reducing flow of product.

TROUBLESHOOTING:

If pump continues to run when all valves are shut off, check all of the connections for leaks and check all of the bolts for tightness. If pump does not start, check the air source.

SYSTEM CLEANING REQUIREMENTS:

You must have 55 gallon drum at least 50% filled with water for proper clean-up of pump system. Use a 5 gallon pail to catch clean out water.

CLEANING PROCEDURE:

- 1) **The circulation of water with the pump running should be done in the field directly after use.**
- 2) Remove drum pump from product drum and place on water drum.
- 3) Close circulation valve completely, then squeeze wand trigger.
- 4) Allow the pump to run at least 5 minutes to clean product from the pump and wand. Flush into an empty container until see product begin to thin. This product should be poured back into drum. Capture the rest of the refuse until it is clear water and dispose of properly
- 5) After the pump and the hose/wand has been cleaned of all product, close wand completely. Open circulation valve fully and allow flushing at least 3 minutes within the drum of water.
- 6) Proper clean-up cannot be achieved unless water is pumped throughout the system with air pump for 5 to 10 minutes.
- 7) **After #6 use water hose to flush the system after removing pump/lid from water drum. Flush the system with hose until clean water comes out of each opening, including the hose/wand. Remove the steel cap on top of wand (see below) and clean with water before product sets up. (The water hose flush can be done when you return to the service yard.)**

THIS SYSTEM SHOULD NEVER BE STORED OVER NIGHT WITHOUT PROPER CLEANING. All clean-up materials should be disposed of properly and all necessary safety clothing and goggles should be worn while operating equipment.



This information is to assist customers in determining if this product is suitable for the proposed application, and to satisfy themselves as to the suitability of the contents. Nothing herein shall constitute a warranty, express or implied, including any warranty of merchantability or fitness, nor is protection from any law or patent implied. Published technical data and instructions are subject to change without notice.

COMPLETE CRACK SHOT DRUM PUMP ASSEMBLY



PARTS INCLUDED

- 1-COMPLETE PUMP ASSEMBLY
- 1-HOSE
- 1-WAND
- 1-PICKUP TUBE
- 1-AIR REGULATOR ASSEMBLY
- 1-SURGE BOTTLE PARTS (INCLUDED OPTION or Retrofit Assembly Kit - See Pg. 3)

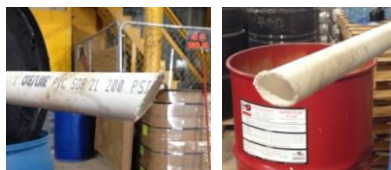


SURGE BOTTLE ASSEMBLY



(OPTIONAL) SURGE BOTTLE

CRACK SHOT DRUM PUMP ASSEMBLY INSTRUCTIONS



1. CUT PICKUP TUBE AT AN ANGLE



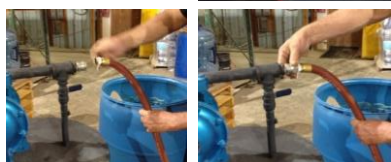
2. SCREW PICKUP TUBE ON TO THE FITTING ON THE BOTTOM OF THE PUMP ASSEMBLY



3. AFTER SECURING PICKUP TUBE, SET THE PUMP ASSEMBLY LID ON TOP OF DRUM



4. ATTACH AIR REGULATOR ON TO THE SIDE OF THE PUMP



5. ATTACH HOSE ON TO THE FITTINGS ON THE SIDE OF THE

PUMP

OPEN

CLOSED



6. ATTACH HOSE END TO THE WAND AND HANDLE TO WAND

The Crack Shot Drum Pump fully assembled and ready for use. The lever on the circulation valve on the pump must be CLOSED before engaging air source.

CRACK SHOT DRUM PUMP ASSEMBLY SURGE BOTTLE ASSEMBLY (OPTIONAL)

The Surge Bottle Assembly is an optional purchase for the Crack Shot Drum Pump. The Surge Bottle ensures a consistent and smooth flow of sealant without any pulsating or surges in flow, which is necessary to lay a an aesthetically pleasing sealant bead in a joint or seam. The volume of flow is controlled by the air regulator. **The optional Surge Bottle Assembly is REQUIRED for use when applying Gap Crete concrete joint and crack sealant.** The Surge Bottle is NOT necessary when cracksealing or when using traditional cold pour asphalt crack sealants. Retrofit Assembly kits are available for purchase but all parts are generally readily available at local hardware stores.

RETROFIT PARTS LIST: All Black Iron

- 1—2" X 12" Nipple
- 1—2" X 1" Reducer
- 1—2" X 3/8" Reducer
- 1—1" All Thread Nipple
- 1— 1" Black Iron "T"
- 1— 3/8" All Thread Nipple
- 1— 3/8" Ball Valve
- 1— 1" X 2" Nipple
- 1— 1" X 6" Nipple

SURGE BOTTLE ASSEMBLY INSTALLATION INSTRUCTIONS: (1) Remove 9" cross pipe between pump and "T" (2) Replace with Surge Bottle assembly

