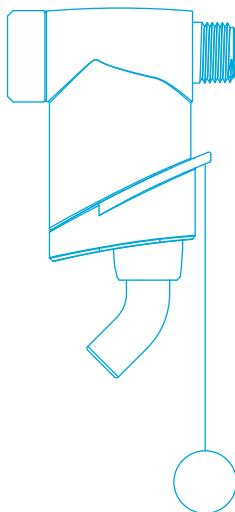




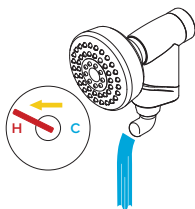
ShowerStart[®] Express

FASTER HOT WATER – HOT SHOWER STANDBY – SAVE HOT WATER



User Guide

How ShowerStart Express Works



1. Turn On Shower

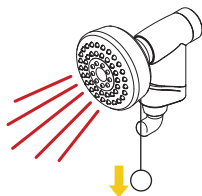
Express Port purges cold water fast to eliminate long shower waits.

if desired, collect in container for later use



2. Hot Shower Standby

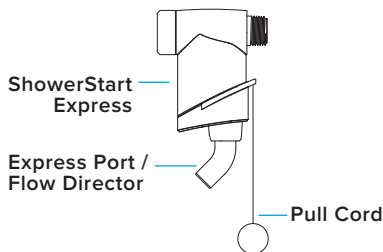
Auto-pauses once hot water arrives to keep empty showers from running on and on during warm-up.



3. Ready When You Are

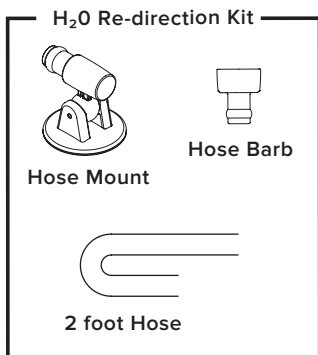
Pull cord to start showerhead flow and begin showering

Contents

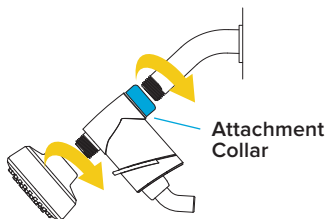


Plumbers Tape
(included for optional use)

Tools Needed
Wrench - Optional



Installation On A Standard Shower Arm



1. Attach showerhead of choice. Affix **Express** to the shower pipe using the **Attachment Collar**. Hand tighten or use wrench.

Plumbers tape optional but not necessary unless leaking occurs.



2. Aim Flow Director:

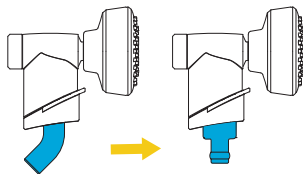
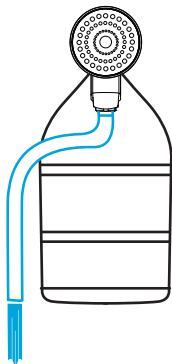
Use the swivel adjustment to direct water exiting **Flow Director** towards interior (shower) wall or (tub) interior side wall.

CAUTION: Do not aim Express Port at location where water could leak outside of shower or tub

H₂O Re-direction Kit (optional)

Use to re-direct water exiting Express Port.

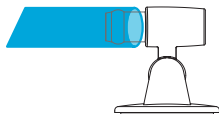
- Diverts flow around a shower caddy
- Smooths and quiets flow
- Improves targeting towards interior wall (shower) or tub side wall (tub/shower combo).
- Additional accessories available at: www.showerstart.com



1. Remove **Flow Director** and replace with included **Hose Barb**.



2. Slide **Hose** over **Hose Barb**.



3. Press opposite end of **Hose** onto **Hose Mount**.



4. Affix self adhesive **Hose Mount** on clean and dry wall in desired location. Adjust swivel to aim spray towards shower / tub interior wall or into a collection bucket.

Maximize Savings



Choose the hottest setting available when turning on the shower. This shortens warm up times and saves water.

To Save Additional Water: direct water exiting Express Port to a container

To Reduce Splashing: direct water exiting Express Port towards interior (shower) wall or (tub) interior side wall

Compatibility

- For use in homes with static water pressure of at least 20 psi with ideal operating range of 30-80 psi
 - Works with galvanized or copper plumbing
 - Tankless systems require a minimum flow rate to produce hot water. With some tankless systems, a brief yet noticeable change in the shower's temperature may occur shortly after resuming the shower's normal flow
 - Auto resets for next use
-

Cleaning

Nozzles: Simply rub when shower head is running

Screen: Your showerhead comes with a screen filter. To clean, simply remove, rinse and replace.

Need Assistance?

480-496-2294

thinkevolve.com/support

3 Year Limited Warranty

PN: EV3801-CP000-SB

Warranty claims:

480-496-2294

thinkevolve.com/support



WARNING!

Cancer and Reproductive Harm

www.P65Warnings.ca.gov



IMPORTANT SAFETY INFORMATION:

ShowerStart Express is NOT an anti-scald device.

- Lower water heater temperature to prevent scalding accidents.
- Water temperatures above 120° F can cause severe burns or even death.
- Always resume water flow and check temperature before entering shower.



explore more at:

ShowerStart.com