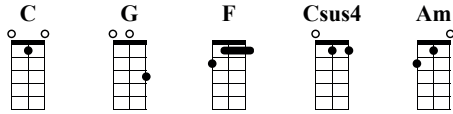


Yellow

Coldplay



Loog Gtr

① = E ② = B ③ = G

♩ = 110

A Verso

n.guit.

C **G**

1 Look at the stars 2 Look how they shine for you 4 And every-thing you do

F **C**

5 Yeah, they were all ye-llow 7 I came a-long 8 I wrote a song for

G **F**

9 you 10 And all the things you do 11 And it was called Ye-llow

13 So then I took my turn 16 Oh, what a thing to have done

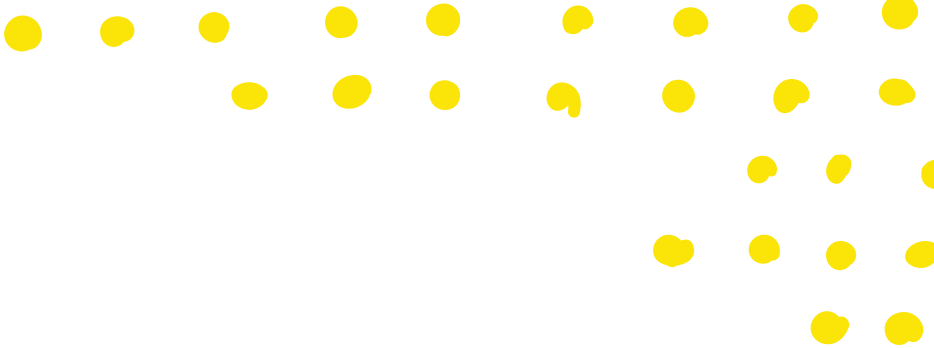
C **Csus4** **C**

17 And it was all ye-llow 20

B Chorus

F **Am** **G** **F** **Am** **G**

21 Your skin, 22 oh yeah, your skin and bones 23 Turn in- 24 to some-thing beau-ti-ful



25 **F** And you know, 26 **Am** you know I love you so 27 **G** 28 **F** You know I love you so

Musical notation for guitar, including a treble clef, a key signature of one flat (F major), and a 4/4 time signature. The melody is written on a single staff with notes and rests. Chord symbols (F, Am, G, F) are placed above the staff. Fingering numbers (1, 5, 3, 3, 0, 0, 1, 1, 3, 3, 0, 0, 1, 1, 3, 3, 0, 0) are written below the staff. A capo is indicated by a 'C' in a box above the staff.

loog