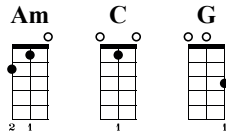


Shake It Off

Taylor Swift



Loog Gtr
① = E ② = B ③ = G
♩ = 150

A Verse

n. guit.

Am **C**

I stay out too late Got no- thin' in my brain That's what peo- ple

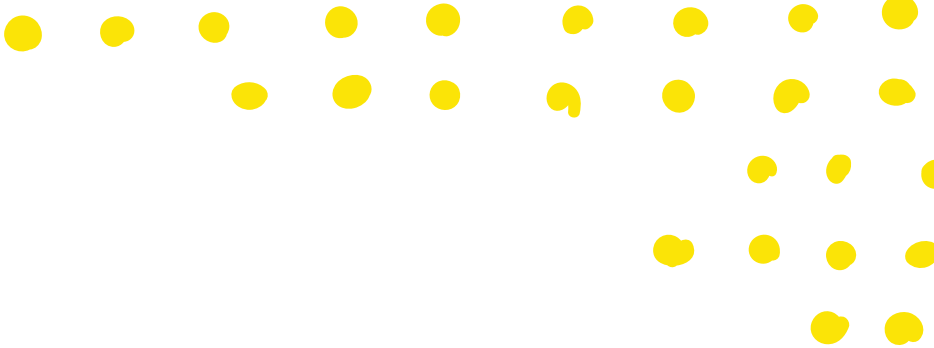
say, mmm- mmm That's what peo- ple say, mmm- mmm But I keep

B Pre-Chorus

Am **C**

crui- sin' Can't stop, won't stop mo- vin' It's like I got this

mu- sic in my mind Say- in', "It's go- nna be al- right" 'Cause the



Chorus

Am C

17 18 19 20

play- ers go- nna play, play, play, play, play And the ha- ters go- nna hate, hate, hate, hate, hate Ba- by,

5 5 5 7 3 0 | 3 0 2 0 9 8 | 5 5 5 7 3 0 | 3 0 2 0 0 0

G G

21 22 23 24

I'm just go- nna shake, shake, shake, shake, shake Shake it off, I shake it off Uh uh uh

5 5 5 7 3 0 | 3 0 2 0 | 5 7 3 3 5 7 | 3 3 5 3



loog