

Reptilia

The Strokes

Loog Gtr
① = E ② = B ③ = G

♩ = 160

A] Intro (Drums/Bass)

nguit.

B] Riff

Bm E 4x

C] Verse

He seemed im- pressed by the way you came in
"Tell us a sto- ry, I know you're not bo- ring"

C] Verse

I was a- fraid that you would not in- sist
"You sound so slee- py, just take this, now leave me" I said, please

D] Pre-Chorus

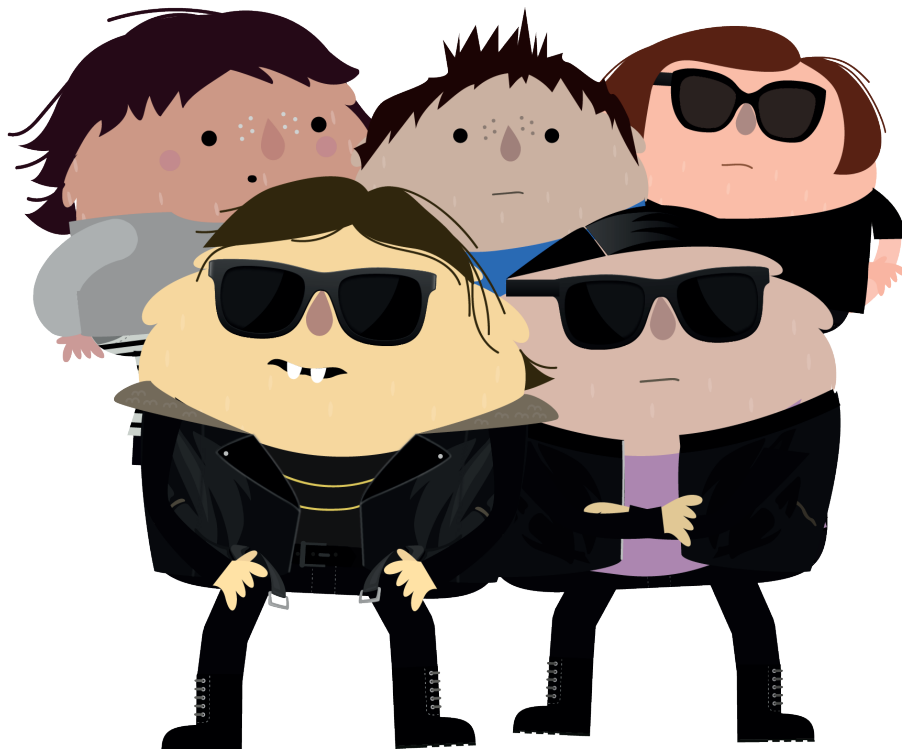
don't slow me down if I'm going too fast
You're in a strange part of our town

E Melody - Break

Musical notation for the Melody - Break section, measures 32-35 and 36-39. The notation is in G major (one sharp) and 4/4 time. It features a melodic line on a treble clef staff and a bass line on a bass clef staff. The bass line includes fret numbers (10, 5, 7, 9) and 'X' marks for fretted notes. The melodic line includes slurs and accents.

F Chorus

Musical notation for the Chorus section, measures 40-55. The notation is in G major (one sharp) and 4/4 time. It features a vocal line on a treble clef staff and a bass line on a bass clef staff. The lyrics are: "Yeah, the night's not o- ver, you're not trying hard e- nough. Our lives are chan- ging lanes, you ran me off the road. The wait is o- ver, I'm now ta- king o- ver. You're no lon- ger laugh- ing, I'm not draw- ing fast e- nough." The bass line includes fret numbers (3, 2, 3, 0, 3, 2, 0, 2, 0, 3, 2, 0, 3, 0, 2, 0, 3, 3, 0, 3, 2, 0, 2, 0, 3, 2, 3).



loog