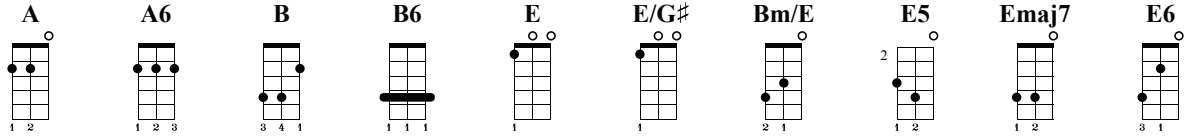


Big Yellow Taxi

Joni Mitchell



Loog Gtr 3 Str
 ① = E ② = B ③ = G

8th note swing ♩ = 165

Intro

Intro

A A6 A A6 A

B B6 B B6 B

(RIFF)

E A Bm/E A E/G# A Bm/E A E

They

A

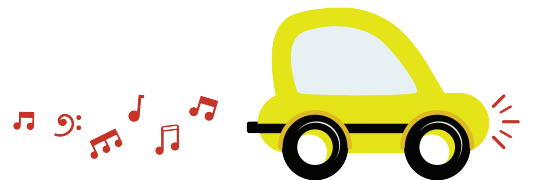
(RIFF)

A E

paved pa-ra-dise And put up a par-king lot With a pink

A B E

ho-tel, a bou-tique And a swing-ing hot spot



B
E5 **Emaj7** **E6** **E**

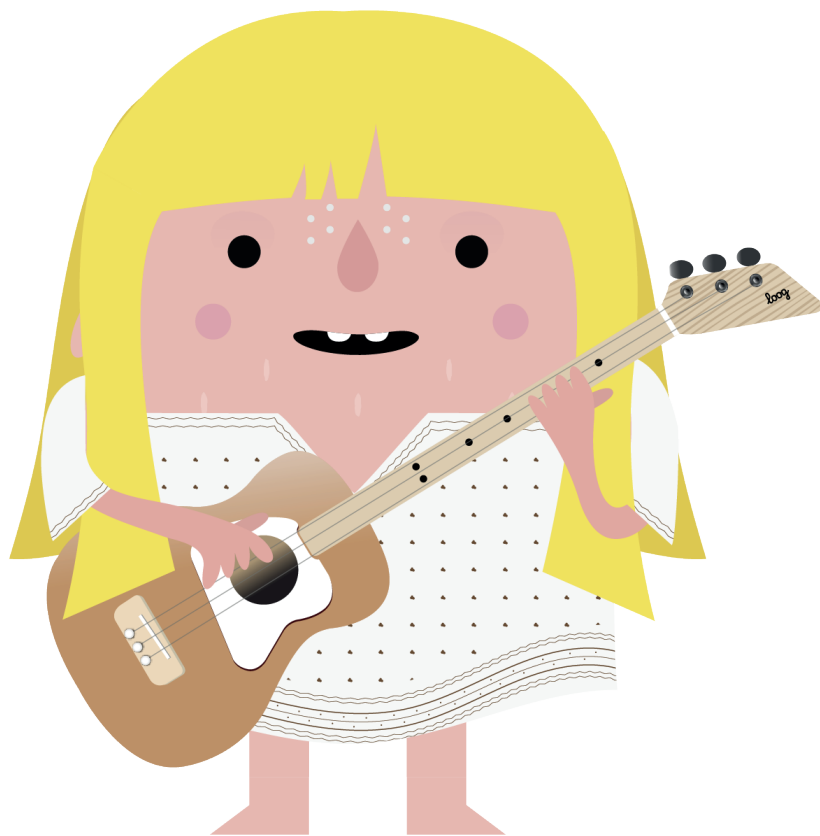
15 Don't it al- ways seem 16 to go 17 That you don't know what you've got 18 Till it's gone They

7 7 7 4 5 (5) 4 7 4 4 5 4 2 0 2 (2) 2 0 1 0

A **B** **E** (RIFF)

19 paved pa- ra- dise 20 And put up a par- king lot 21 (Shoo- bop- bop- bop- bop Shoo - bop- bop- bop- bop)

2 0 2 2 0 2 2 2 4 2 0 7 7 7 7 7 7 (7) 7 7 7 7



loog