



# CARPET TILE POCKET GUIDE

## Carpet Tile Packaging

Size	24" x 24" (EcoWorx)	24" x 24" (StrataWorx)	18" x 36"	9" x 36"
Yards per box	5.33 sq yd or 48 sq ft	8.88 sq yd or 80 sq ft	5 sq yd or 45 sq ft	5 sq yd or 45 sq ft
Tiles per box	12	20	10	20
Boxes per pallet	30	20	30	40
Pallets per truck	33	33	33	30

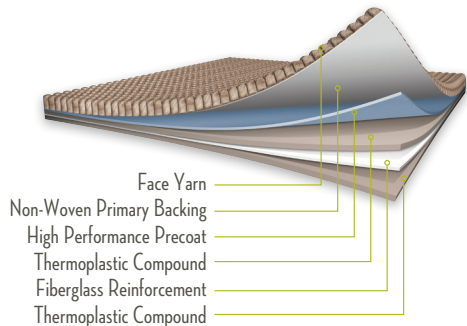
## Why Carpet Tile?

- Cost efficient, minimal waste for tile 2%-3% vs. 8%-13% for broadloom
- Fewer labor related claims - no seaming or stretching
- Ease of handling, storage & installation
- Less costly transportation
- Ease of selective replacement
- Long term value - 50-100% longer life cycle vs. standard broadloom backing
- Ease of occupied replacement/VIT
- Under floor access



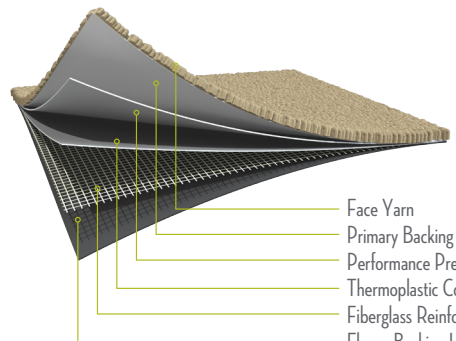
# eco<sup>+</sup>worx<sup>®</sup> tile

- The world's first Cradle to Cradle™ Silver, fully recyclable, PVC-free, commercial carpet tile backing
  - 3 sizes available 24" x 24", 18" x 36" and 9" x 36"
  - HPD and EPDs available
  - Meets CRI Green Label Plus certification requirements for low indoor air emissions
  - Contributes to multiple LEED credits for Indoor Environmental Quality and Materials & Resources
  - Environmental Guarantee ensures product can be recycled at the end of its useful life.
- Call 800.509.SHAW



- Face Yarn
- Non-Woven Primary Backing
- High Performance Precoat
- Thermoplastic Compound
- Fiberglass Reinforcement
- Thermoplastic Compound

# strataworx<sup>™</sup> tile



- Face Yarn
- Primary Backing
- Performance Precoat
- Thermoplastic Compound
- Fiberglass Reinforcement Layer
- Fleece Backing Layer



- Cutting edge, innovative lightweight backing for maximum efficiency
- Ease of handling, installation and storage
- Meets CRI Green Label Plus certification
- 10 year commercial limited warranty

## UNLIMITED

The possibilities are endless. Unleash your creativity and forget your boundaries with a selection of expertly crafted carpet tiles that vary in color, pattern and scale so they always blend together, regardless of how or when they are installed.

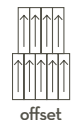
## LokDots<sup>®</sup>

- A fast and efficient way to complete installation of EcoWorx Tile in occupied spaces.
- Odorless and non-toxic
- No wet adhesive means virtually no drying time
- Cradle to Cradle Certified™ Silver when used with EcoWorx Tile products
- Fully recyclable



## Installation Methods

### 9" x 36"



offset



herringbone



stagger

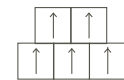


monolithic

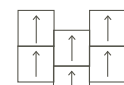


ashlar

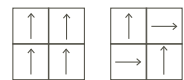
### 24" x 24"



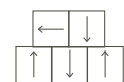
brick



ashlar

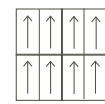


monolithic quarter turn

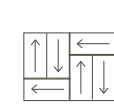


random

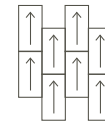
### 18" x 36"



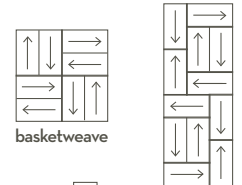
monolithic



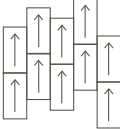
half basketweave



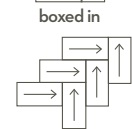
ashlar



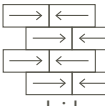
boxed in



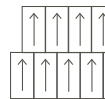
stagger



herringbone



brick



offset