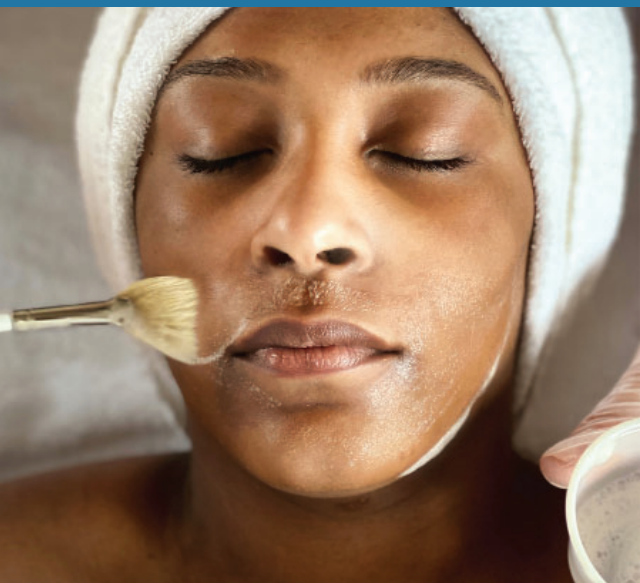




BIOELEMENTS SPA MENU

We don't believe in off-the-shelf, one-size-fits all skin care. A Bioelements facial is personalized just for you – with formulas that are part science + part nature. It starts with a clinical SkinReading, to identify your biggest skin concerns, followed by a tailored treatment with exclusive Custom Blends and innovative formulas created only for use by trained professionals. From sensorial aromatherapy to signature massage techniques, a Bioelements experience benefits both your skin and your senses.

bioelements



Custom Blend Facial

There's no facial more personalized than this. A thorough Bioelements SkinReading will identify your unique concerns, followed by invigorating cleansing, tailored exfoliation and aromatherapeutic facial massage, plus a power treatment and mask custom blended in-treatment with concentrated ingredients to target your skin's individual needs. In three corrective activity tiers designed to deliver personalized results with increasing levels of active enzymes.

Signature: buffered enzyme exfoliation; for facial first-timers, sensitive skin types, those with a compromised barrier

Advanced: enzyme exfoliation; for all skin types when you want a moderate action, skin barrier ready to level-up corrective activity

Max: maximum exfoliation with triple corrective enzymes, for skin well-tolerated to the Advanced tier

60-minute experience includes: Bioelements SkinReading, Signature Aromatherapy Breathing, Deep Cleansing Massage, Personalized Custom Blending, Clinical Enzyme Exfoliation, Extractions, Aromatherapy Facial Massage, Customized Power Treatment + Power Mask

NOTE: *Your esthetician has the ability to perform this Custom Blend Facial with the following modalities: Microdermabrasion, LED, Microcurrent, Dermaplaning, High Frequency*

Firm + Lift Facial

Lifts and sculpts the look of aging, sagging skin with a gravity-defying clinical power mask, plus youth-renewing massage movements to target dermal tissue, aid toxin removal, and increase lymphatic activity. In three corrective activity tiers designed to deliver personalized results with increasing levels of active enzymes. Recommended to be experienced in a facial series for optimal visible results.

Signature: buffered enzyme exfoliation; for facial first-timers, sensitive skin types, those with a compromised barrier

Advanced: enzyme exfoliation; for all skin types when you want a moderate action, skin barrier ready to level-up corrective activity

Max: maximum exfoliation with triple corrective enzymes, for skin well-tolerated to the Advanced tier

60-minute experience includes: Bioelements SkinReading, Signature Aromatherapy Breathing, Deep Cleansing, Youth Renewal Massage, Personalized Custom Blending, Clinical Enzyme Exfoliation Aroma-sensorial Mint Firming Mask, Eye Acupressure Massage

Barrier Repair + Relax

Designed for skin that's stressed or delicate, this corrective facial triple-targets sensitivities, and nourishes skin's barrier with active strengtheners – as calming acupressure massage movements alleviate tension, reduce facial strain and melt away stress. In two corrective activity tiers designed to deliver personalized results with increasing levels of active enzymes.

Signature: buffered enzyme exfoliation; for facial first-timers, sensitive skin types, those with a compromised barrier

Advanced: enzyme exfoliation; for all skin types when you want a moderate action, skin barrier ready to level-up corrective activity

60-minute experience includes: Bioelements SkinReading, Signature Aromatherapy Breathing, Deep Cleansing Massage, Personalized Custom Blending, Gentle Exfoliation, Extractions, Calming Acupressure Massage, Corrective Power Treatment + Hydrating Mask

Oxygen Glow

A purifying treatment to renew skin that's dull, tired, sluggish, clogged or prematurely aging - with a triple oxygenating complex designed to amplify cellular respiration. In three corrective activity tiers designed to deliver personalized results with increasing levels of exfoliation.

Signature: buffered oxygenating AHA exfoliation. for facial first-timers, sensitive skin types, those with a compromised barrier

Advanced: oxygenating AHA exfoliation. for skin well-tolerated tier Signature tier, skin barrier ready to level-up corrective activity

Max: maximum oxygenating AHA + triple corrective enzymatic exfoliation. for skin well-tolerated to Advanced tier, more resistive skin, skin barrier ready for highest corrective activity

60-minute experience includes: Bioelements SkinReading, Signature Aromatherapy Breathing, Deep Cleansing Massage, Personalized Custom Blending, Clinical Oxygenating Exfoliation, Extractions, Aromatherapy Youth Renewal Massage, vitamin C Power Treatment + Customized Power Mask, Eye Acupressure Massage

Corrective Facials *continued*

Adolescent + Tween Facial

Designed for adolescent skin, to target stress-related breakouts, congestion and dullness. With deep cleansing, gentle extraction of unwanted blemishes, and a stress-relieving Face + Eye Acupressure Massage, it's a perfect introduction to start healthy skin care habits and embrace your skin through the teen years and beyond. In two corrective activity tiers designed to deliver personalized results with increasing levels of active enzymes.

Signature: buffered enzyme exfoliation; for facial first-timers, sensitive skin types, those with a compromised barrier

Advanced: enzyme exfoliation; for all skin types when you want a moderate action, skin barrier ready to level-up corrective activity

60-minute experience includes: Bioelements SkinReading, Signature Aromatherapy Breathing, Deep Cleansing Massage, Aromatherapy Massage, Personalized Custom Blending, Clinical Enzyme Exfoliation, Extractions, Purifying Power Treatment + Hydrating Detox Power Mask

Men's Facial

Designed for men's skin needs – including bearded skin, this customized treatment includes deep cleansing and exfoliation to target dullness, breakouts or ingrown hairs. A custom blended power mask will be applied to soothe, hydrate and brighten the skin. All this, plus a relaxing massage of the face and neck. In three corrective activity tiers designed to deliver personalized results with active enzymes.

Signature: buffered enzyme exfoliation; for facial first-timers, sensitive skin types, those with a compromised barrier

Advanced: enzyme exfoliation; for all skin types when you want a moderate action, skin barrier ready to level-up corrective activity

Max: maximum exfoliation with triple corrective enzymes, for skin well-tolerated to the Advanced tier

60-minute experience includes: Bioelements SkinReading, Deep Cleansing Massage, Personalized Custom Blending, Clinical Enzyme Exfoliation, Calming Acupressure Massage, Extractions, Customized Power Treatment + Power Mask

Acne Facials

Clinical Acne Facial / Clinical Acne Back Treatment

Designed for stubborn acne, hormonally induced breakouts or chronic clogged pores + blackheads. Deep pore cleansing and exfoliation are followed by a salicylic acid medicated power treatment and sulfur power mask to clear + heal. In two corrective activity tiers designed to deliver personalized results based on SkinReading. Can be performed on face or back.

Signature: enzyme exfoliation, plus an oxygenating power treatment; for non-inflamed acne when extractions are important

Advanced: 30% glycolic acid exfoliation, plus a vitamin C power treatment; for inflamed acne with excessive macules or post-acne dark spots

60-minute experience includes: Bioelements SkinReading, Signature Aromatherapy Breathing, Deep Cleansing Massage, Personalized Custom Blending, Extractions, Medicated Acne Power Treatment + Power Mask

Body

Herbal Grains Body Polishing Wrap

Therapeutic neck-to-toes body exfoliation with dual-action, physical and chemical exfoliation using ancient herbal grains that first sweep away dulling cells, then melt into skin, releasing natural AHAs, plus a warming body cocoon wrap.

includes: Dual-action Physical and AHA Exfoliation, Gentle Massage, Warming Wrap, Hydrating Body Creme

Herbal Grains Body Polishing Massage

Therapeutic neck-to-toes body exfoliation with dual-action, physical and chemical exfoliation using ancient herbal grains that first sweep away dulling cells, then melt into skin, releasing natural AHAs. Helps increase circulation and stimulate lymphatic system.

includes: Dual-action Physical and AHA Exfoliation, Gentle Massage, Hydrating Body Creme

Citrus Fruit Wrap + Body Brush

Invigorating, neck-to-toes dry brushing body exfoliation to exfoliate + detox, followed by an aromatherapeutic massage with deep hydrating citrus fruit oil for complete renewal and relaxation.

includes: Full-body Dry Brushing, Gentle Aromatherapeutic Massage, Hydrating Body Creme

Triple Corrective Enzyme Facial

Removes aging dead cells, awakens dullness and targets problem pores with active, proteolytic enzymes. Ideal for all skin types – even sensitive. In three corrective activity tiers designed to deliver personalized results with active enzymes. Recommended to be experienced in a facial series for optimal visible results.

Signature: buffered enzyme exfoliation; for facial first-timers, sensitive skin types, those with a compromised barrier

Advanced: enzyme exfoliation; for all skin types when you want a moderate action, skin barrier ready to level-up corrective activity

Max: maximum exfoliation with triple corrective enzymes + 30% lactic acid, for skin well-tolerated to the Advanced tier

60-minute experience includes: Bioelements SkinReading, Signature Aromatherapy Breathing, Deep Cleansing Massage, Personalized Custom Blending, Clinical Enzyme Exfoliation, Extractions, Customized Power Treatment + Power Mask

Ultra-Detox Chemical Peel

A powerful, non-surgical acid-hybrid peel to undo years of damage and age signs – without the redness, flaking, or “peeling” of a traditional chemical peel. Works on a microscopic level to tighten, unclog pores, improve lines and leave skin velvety-smooth. In three corrective tiers to deliver personalized results with increasing levels of lactic or glycolic acids. Recommended to be experienced in a facial series of increasing glycolic acid activity for optimal results.

Signature: even surface peeling with 30% lactic acid. for facial first-timers, sensitive skin types, those with a compromised barrier

Advanced: advanced surface peeling with 15% glycolic acid and 5% lactic acid, plus a vitamin C power treatment. for skin well-tolerated to Signature tier, skin barrier ready to level-up corrective activity

Max: maximum surface peeling with a blend of triple corrective enzymes, 25% glycolic acid and 5% lactic acid, plus a vitamin C power treatment. for skin well-tolerated to tier Advanced tier, more resistive skin, skin barrier ready for highest corrective activity

60-minute experience includes: Bioelements SkinReading, Signature Aromatherapy Breathing, Deep Cleansing Massage, Personalized Custom Blending, Chemical Peeling with Lactic or Glycolic Acid, Power Treatment + Calming Mask

Herbal Grains Retexturizer

A one-of-a-kind, dual-action exfoliating facial. After initial enzymatic exfoliation, dual-action ancient herbal grains will sweep away dulling cells, then melt into skin, releasing natural AHAs – for skin that’s brighter, smoother and refreshed. In three corrective activity tiers designed to deliver personalized results.

Signature: buffered enzyme exfoliation plus an oxygenating power treatment; for facial first-timers, sensitive skin types, those with a compromised barrier

Advanced: enzyme exfoliation, plus a vitamin C power treatment; for all skin types when you want a moderate action, skin barrier ready to level-up corrective activity

Max: maximum exfoliation with triple corrective enzymes, plus a vitamin C power treatment, for skin well-tolerated to the Advanced tier

60-minute experience includes: Bioelements SkinReading, Signature Aromatherapy Breathing, Deep Cleansing Massage, Clinical Enzyme Exfoliation, Dual-action Physical and AHA Exfoliation, Personalized Custom Blending, Retexturizing Power Treatment + Detox Mask

Even Brighter Facial

Clinical skin brightening treatment to target dark spots, dullness, discoloration and uneven tone. In three corrective activity tiers designed to deliver personalized results with active enzymes, lactic acid and/or glycolic acid, plus a potent vc10 concentration of brightening 10% vitamin C. Recommended to be experienced in a facial series of increasing levels of activity for optimal visible results.

Signature: even surface peeling with 30% lactic acid. designed for facial first-timers, sensitive skin types, those with a compromised barrier

Advanced: advanced surface peeling with triple corrective enzymes + 30% organic lactic acid. designed for skin well-tolerated to Even Brighter: Signature, skin barrier ready to level-up corrective activity

Max: maximum surface peeling with a potent blend of triple corrective enzymes, 15% glycolic acid and 5% lactic acid. Designed for skin well-tolerated to Even Brighter: Advanced, more resistive skin, skin barrier ready for highest corrective activity

60-minute experience includes: Bioelements SkinReading, Signature Aromatherapy Breathing, Deep Cleansing Massage, Personalized Custom Blending, Clinical Exfoliation with Enzymes, Lactic Acid and/or Glycolic Acid, Extractions, vitamin C Power Treatment + Detox Mask

Faster Facials

Faster Custom Blend Facial

An express, personalized facial designed to target your unique concerns, with invigorating cleansing + exfoliation, aromatherapeutic facial massage, plus a power treatment and mask custom blended in-treatment with concentrated ingredients to target your skin's individual needs.

30-minute experience includes: Bioelements SkinReading, Exfoliating + Deep Cleansing Massage, Aromatherapy Facial Massage, Custom Blended Power Treatment + Power Mask

Faster Peel

An express, personalized peel designed to target dullness, lines and problem pores with deep cleansing followed by a gentle but effective glycolic acid peel.

30-minute experience includes: Bioelements SkinReading, Deep Cleansing Massage, Lactic Acid Peel, Calming Power Mask

Faster Firm + Lift

An express facial to lift and sculpts the look of aging, sagging skin with a gravity-defying clinical power mask. Recommended to be experienced in a facial series for optimal visible results.

30-minute experience includes: Bioelements SkinReading, Deep Cleansing Massage, Aroma-sensorial Mint Firming Mask

Faster Eye Smoother

An express facial to smooth the look of crow's feet, brighten dark circles and de-puff – boosted by a renewing acupressure massage of eye area and forehead. Perfect before any special event when you want to look fresher, brighter, and younger.

30-minute experience includes: Bioelements SkinReading, Eye Area Acupressure Massage, Custom Blended Power Treatment + Mask for the Eye Area

Faster Back Facial

An express "facial on the flipside" designed to brighten, smooth and re-energize so you're ready to reveal a little more skin. Features deep cleansing + exfoliation, a soothing aromatherapy massage, and a custom blended power treatment + mask.

30-minute experience includes: Bioelements SkinReading, Deep Cleansing + Exfoliation, Aromatherapy Massage, Custom Blended Power Treatment + Power Mask

The Duet Facial + Wax

A clinical facial treatment + wax service designed to hydrate, smooth and completely revive your skin. It starts with a Bioelements SkinReading to reveal your skin's biggest needs, followed by steamy, deep cleansing personalized to your skin type, thorough hair removal, and a deeply hydrating power mask.

30-minute experience includes: Bioelements SkinReading, Deep Cleansing Massage, Personalized Custom Blending, Hair Removal (optional), Hydrating Power Mask

Enhancements

Triple Corrective Arm + Hand Treatment

For hands + arms that are rough + dry, or prematurely aged. A potent enzyme + exfoliating mask reverses years of damage from the elbows to fingertips – for skin that's smoother, brighter and younger-looking.

includes: Enzyme Exfoliating mask, Hydrating Moisturizer

Firming Neck + V-area

To firm and lift skin on the neck and v-area that is sagging, lined or rough with a gravity-defying clinical power mask.

includes: Aroma-sensorial Mint Firming Mask, Optional Shoulders or Scalp Massage

Herbal Grains Elbow Rescue

A one-of-a-kind, dual-action exfoliating add on for rough, tough, scaly dry elbows. Delivers both physical and chemical exfoliation with ancient herbal grains that first sweep away dulling cells, then melt into skin, releasing natural AHAs – for skin that's brighter, smoother and refreshed

includes: Dual-action Physical and AHA Exfoliation, Hydrating Body Creme

Herbal Grains Hand Renewal

A one-of-a-kind, dual-action exfoliating add on for dry, prematurely aged hands. Delivers both physical and chemical exfoliation with ancient herbal grains that first sweep away dulling cells, then melt into skin, releasing natural AHAs – for skin that's brighter, smoother and refreshed.

includes: Dual-action Physical and AHA Exfoliation, Gentle Hand Massage, Hydrating Body Creme

Herbal Grains Foot Renewal

A one-of-a-kind, dual-action exfoliating add on for dry, rough feet. Delivers both physical and chemical exfoliation with ancient herbal grains that first sweep away dulling cells, then melt into skin, releasing natural AHAs – for skin that's brighter, smoother and refreshed.

includes: Dual-action Physical and AHA Exfoliation, Gentle Foot Massage, Hydrating Body Creme