



# Cajas de Ventilación con Louver CCL







## CAJAS DE VENTILACIÓN CON LOUVER

# CCL

### INFORMACIÓN GENERAL



Unidades de ventilación tipo Penthouse, una opción más presentada por Soler & Palau, para la inyección, presurización y manejo de aire limpio.

Las Cajas de ventilación Compactas con Louvers; están estructuradas con lámina de acero galvanizada, apropiada para uso en intemperie, y en calibres justos para mantener un peso ligero que permita su manipulación y colocación con sencillez. Cuentan con un panel de inspección superior que facilita el acceso al mantenimiento, limpieza y verificación de las piezas rotativas. Así como una cubierta tipo penthouse en la succión, que consiente su funcionamiento aún en condiciones climáticas como; lluvia o viento; debido al ángulo con el que son fabricados las aletas del louver; adicionalmente cuentan con filtros metálicos lavables que minimizan la entrada de partículas ajenas al sistema y facilitan el mantenimiento preventivo del mismo.

Al interior de las cajas se localiza un equipo centrífugo de doble oído de aspiración Modelo DA, el cual, es un modelo con certificación AMCA para caudal y presión. Los DA tienen un arreglo especial que permite la utilización del motor sobre la carcasa del equipo optimizando el espacio dentro de la caja.

El DA ofrece diversas ventajas, como son:

- Velocidades de aire adecuadas.
- Facilidad de instalación y mantenimiento.
- Bajas velocidades de giro en la turbina.
- Reducidos niveles de vibración y nivel sonoro.

Sus aplicaciones son residenciales, comerciales e industriales, en ambientes donde se requiera inyección de aire limpio con un equipo eficiente, ligero y con apariencia agradable.



CAJAS DE VENTILACIÓN  
CON LOUVER

# CCL

# CCL



CCL 7/7, 9/9, 10/10, 12/12, 15/15 y 18/18.

Tipo de rodetes: álabes adelantados.

Tamaños: 7/7, 9/9, 10/10, 12/12, 15/15, 18/18.

Rango de caudal: 321 m<sup>3</sup>/hr ( 189 cfm) hasta  
15,132 m<sup>3</sup>/hr (8906 cfm).

Rango de Presión estática: hasta 36.3 mm c.a.  
(1.43 inwg)

Rango de Potencia: 3/4 HP hasta 5HP.

## NOMENCLATURA

# CCL 12/12 - 1

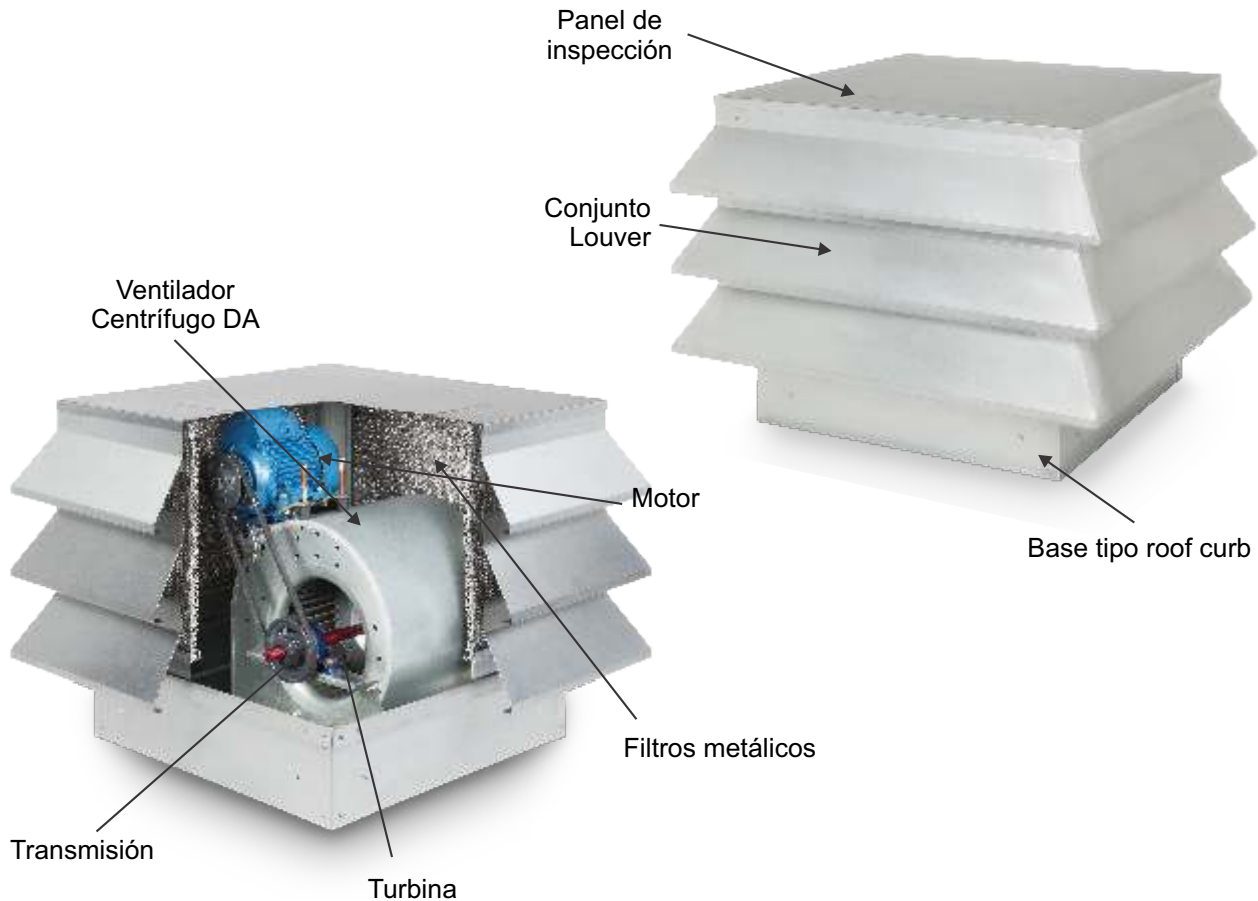
**Modelo:**  
CCL Cajas de Ventilación  
con Louver

**Potencia Instalada:**  
3/4 HP, 1HP, 1 1/2 HP,  
2HP, 3HP, 5 HP.

**Diámetro aproximado turbina:**  
7, 9, 10, 12, 15 y 18 (pulgadas)

**Ancho aproximado turbina:**  
7, 9, 10, 12, 15 y 18 (pulgadas)

## CARACTERÍSTICAS DE CONSTRUCCIÓN



La Caja de Ventilación con Louver está fabricada en lámina de acero galvanizado de calibre 20.

Panel superior reforzado que facilita el mantenimiento e inspección del equipo.

Cuello rígido de descarga para facilitar el acoplamiento al sistema de ductos y conjunto Louver en la succión.

Filtros metálicos lavables para remover contaminantes aerotransportados. Por su diseño y construcción ofrecen alta capacidad de retención y baja resistencia al aire. Por sus materiales los filtros son anticorrosivos y tienen alta durabilidad.

El equipo centrífugo DA está montado sobre una base tipo roof curb para facilitar su instalación.

Cuenta con transmisión de poleas-bandas diseñadas y calculadas acorde a las necesidades de ventilación requeridas.

Los ejes se fabrican con acero AISI C-1045, utilizando un proceso automático para el posicionamiento y corte de los cuñeros.

Los rodamientos seleccionados para este modelo han sido calculados para su óptimo desempeño en aplicaciones de servicio pesado; brindando larga durabilidad en todas las condiciones de operación L50 500,000 horas.

Los motores empleados son fabricados bajo especificaciones NEMA.



## CAJAS DE VENTILACIÓN CON LOUVER

# CCL

### LABORATORIOS S&P Y ENSAYOS DE EQUIPOS

El grupo S&P ha consolidado cuatro laboratorios acreditados para pruebas de ventiladores: dos en América (EUA y México) y uno en Asia (Singapur) con acreditación AMCA.

Además del Centro R+D+i ubicado en Europa (España) en donde cuenta además, con un laboratorio acreditado por ENAC.

Todos los datos de caudal, presión, consumo energético, eficiencia, nivel sonoro, que se muestran en el presente catálogo, han sido evaluados y corroborados en laboratorios S&P, brindando confiabilidad en las prestaciones del equipo.



Soler y Palau S.A. de C.V. certifica que los modelos DA 7/7 al DA/36/36, han sido aprobados para tener el sello de prestaciones certificadas por AMCA. Los valores de caudal y presión que aquí se muestran fueron obtenidos en ensayos y procedimientos desarrollados de acuerdo con la publicación AMCA 211 y cumplen con los requerimientos del programa de certificación AMCA.

**Soler y Palau S.A. de C.V. certifies that the models DA 7/7 to DA 36/36 shown herein are licensed to bear the AMCA Seal. The ratings shown are based on test and procedures performed in accordance with AMCA Publication 211 and comply with the requirements of the AMCA Certified Ratings Program.**



# CCL 7/7

## CARACTERÍSTICAS PRINCIPALES

Diámetro de la turbina: 197 mm (7 3/4 inch)  
 Diámetro del eje: 19.05 mm (3/4 inch)  
 Área de salida: 0.052 m<sup>2</sup> (0.564 ft<sup>2</sup>)  
 Máxima potencia de consumo: 0.78 BHP  
 Armazón máximo de motor: A-56  
 RPM máximas: 1500  
 Peso aproximado sin motor: 41 Kg

## TABLA DE FÁCIL ACCESO

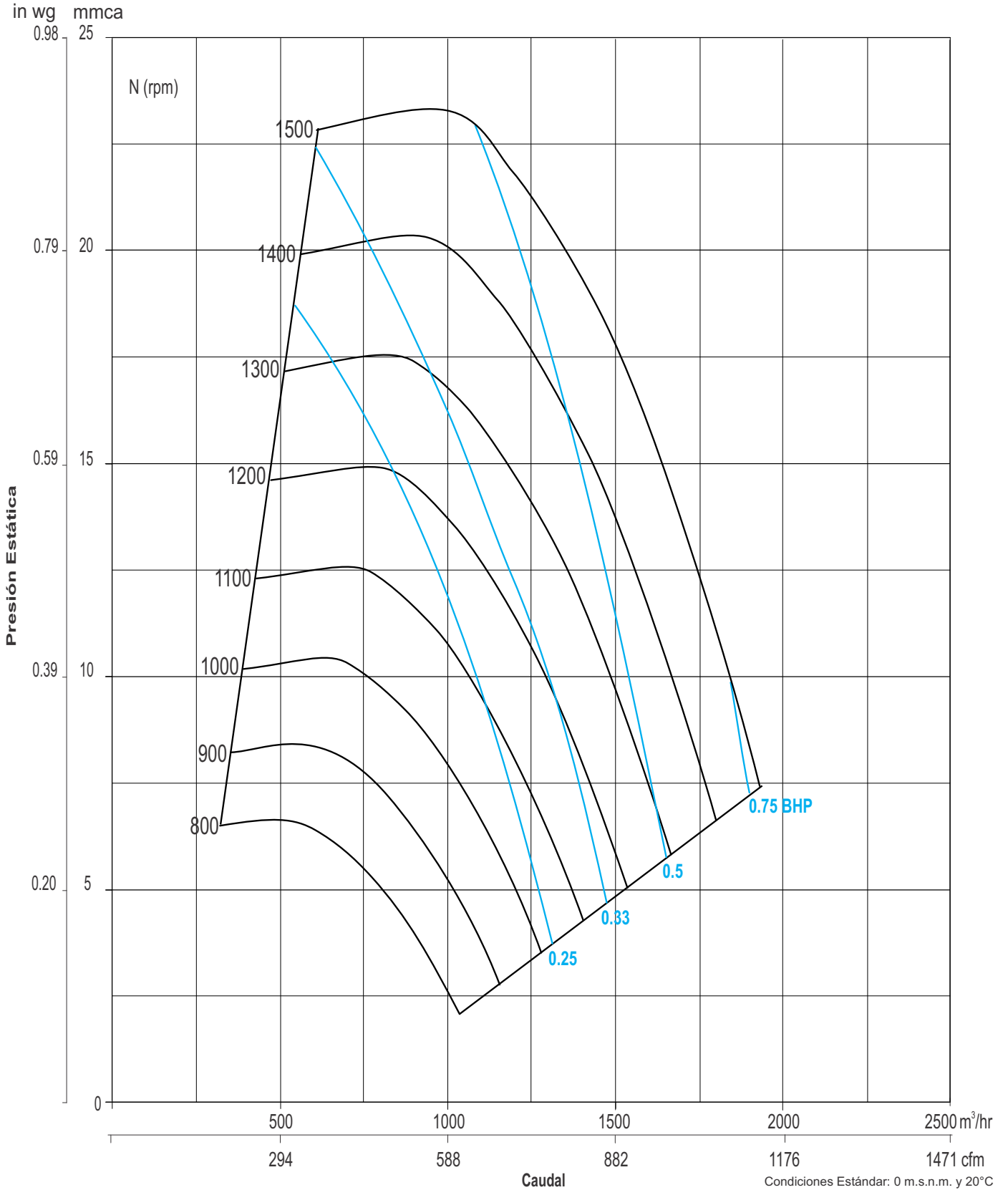
| HP   | RPM  | PRESIÓN ESTÁTICA mmca - inwg |       |                    |       |                    |       |                    |       |                    |       |                    |       |                    |       |                    |       |                    |       |                    |       |  |  |
|------|------|------------------------------|-------|--------------------|-------|--------------------|-------|--------------------|-------|--------------------|-------|--------------------|-------|--------------------|-------|--------------------|-------|--------------------|-------|--------------------|-------|--|--|
|      |      | 10.47mm/0.41"                |       | 11.51mm/0.45"      |       | 12.53mm/0.49"      |       | 13.61mm/0.54"      |       | 14.68 mm/0.58"     |       | 15.70mm/0.62"      |       | 16.74mm/0.66"      |       | 17.81mm/0.70"      |       | 18.89mm/0.74"      |       | 19.88mm/0.78"      |       |  |  |
|      |      | CFM                          | BHP   | CFM                | BHP   | CFM                | BHP   | CFM                | BHP   | CFM                | BHP   | CFM                | BHP   | CFM                | BHP   | CFM                | BHP   | CFM                | BHP   | CFM                | BHP   |  |  |
|      |      | m <sup>3</sup> /hr           | dB(A) | m <sup>3</sup> /hr | dB(A) | m <sup>3</sup> /hr | dB(A) | m <sup>3</sup> /hr | dB(A) | m <sup>3</sup> /hr | dB(A) | m <sup>3</sup> /hr | dB(A) | m <sup>3</sup> /hr | dB(A) | m <sup>3</sup> /hr | dB(A) | m <sup>3</sup> /hr | dB(A) | m <sup>3</sup> /hr | dB(A) |  |  |
| 1/4  | 1050 | 514                          | 0.19  | 369                | 0.15  |                    |       |                    |       |                    |       |                    |       |                    |       |                    |       |                    |       |                    |       |  |  |
|      |      | 872                          | 46    | 628                | 44    |                    |       |                    |       |                    |       |                    |       |                    |       |                    |       |                    |       |                    |       |  |  |
|      | 1076 | 552                          | 0.21  | 482                | 0.19  |                    |       |                    |       |                    |       |                    |       |                    |       |                    |       |                    |       |                    |       |  |  |
|      |      | 937                          | 47    | 818                | 46    |                    |       |                    |       |                    |       |                    |       |                    |       |                    |       |                    |       |                    |       |  |  |
|      | 1102 | 604                          | 0.24  | 541                | 0.22  | 431                | 0.19  |                    |       |                    |       |                    |       |                    |       |                    |       |                    |       |                    |       |  |  |
|      |      | 1027                         | 48    | 918                | 47    | 733                | 46    |                    |       |                    |       |                    |       |                    |       |                    |       |                    |       |                    |       |  |  |
| 1/3  | 1128 | 643                          | 0.26  | 587                | 0.24  | 514                | 0.22  |                    |       |                    |       |                    |       |                    |       |                    |       |                    |       |                    |       |  |  |
|      |      | 1092                         | 49    | 997                | 48    | 873                | 47    |                    |       |                    |       |                    |       |                    |       |                    |       |                    |       |                    |       |  |  |
|      | 1154 | 679                          | 0.29  | 632                | 0.27  | 571                | 0.25  | 487                | 0.23  |                    |       |                    |       |                    |       |                    |       |                    |       |                    |       |  |  |
|      |      | 1154                         | 50    | 1073               | 49    | 970                | 48    | 828                | 47    |                    |       |                    |       |                    |       |                    |       |                    |       |                    |       |  |  |
|      | 1180 | 714                          | 0.31  | 670                | 0.30  | 618                | 0.28  | 549                | 0.26  |                    |       |                    |       |                    |       |                    |       |                    |       |                    |       |  |  |
|      |      | 1214                         | 50    | 1137               | 50    | 1050               | 49    | 933                | 48    |                    |       |                    |       |                    |       |                    |       |                    |       |                    |       |  |  |
| 1/2  | 1206 | 747                          | 0.34  | 707                | 0.33  | 662                | 0.31  | 603                | 0.29  | 521                | 0.26  |                    |       |                    |       |                    |       |                    |       |                    |       |  |  |
|      |      | 1270                         | 51    | 1201               | 51    | 1125               | 50    | 1024               | 49    | 886                | 48    |                    |       |                    |       |                    |       |                    |       |                    |       |  |  |
|      | 1232 | 779                          | 0.37  | 742                | 0.35  | 699                | 0.34  | 650                | 0.32  | 587                | 0.30  |                    |       |                    |       |                    |       |                    |       |                    |       |  |  |
|      |      | 1323                         | 52    | 1261               | 51    | 1188               | 51    | 1104               | 50    | 997                | 49    |                    |       |                    |       |                    |       |                    |       |                    |       |  |  |
|      | 1258 | 811                          | 0.40  | 776                | 0.38  | 737                | 0.37  | 692                | 0.35  | 642                | 0.33  | 566                | 0.31  |                    |       |                    |       |                    |       |                    |       |  |  |
|      |      | 1377                         | 52    | 1318               | 52    | 1252               | 51    | 1175               | 51    | 1090               | 50    | 961                | 49    |                    |       |                    |       |                    |       |                    |       |  |  |
|      | 1284 | 841                          | 0.43  | 810                | 0.42  | 771                | 0.40  | 730                | 0.38  | 684                | 0.37  | 623                | 0.34  | 539                | 0.31  |                    |       |                    |       |                    |       |  |  |
|      |      | 1429                         | 53    | 1375               | 53    | 1310               | 52    | 1239               | 52    | 1161               | 51    | 1059               | 50    | 916                | 49    |                    |       |                    |       |                    |       |  |  |
|      | 1310 | 871                          | 0.46  | 838                | 0.45  | 806                | 0.43  | 768                | 0.42  | 724                | 0.40  | 672                | 0.38  | 611                | 0.35  | 502                | 0.31  |                    |       |                    |       |  |  |
|      |      | 1479                         | 54    | 1423               | 53    | 1369               | 53    | 1304               | 52    | 1229               | 52    | 1141               | 51    | 1038               | 50    | 853                | 49    |                    |       |                    |       |  |  |
|      | 3/4  | 1336                         | 900   | 0.50               | 870   | 0.48               | 837   | 0.47               | 802   | 0.45               | 761   | 0.43               | 718   | 0.41               | 664   | 0.39               | 594   | 0.36               |       |                    |       |  |  |
|      |      |                              | 1529  | 54                 | 1478  | 54                 | 1422  | 53                 | 1363  | 53                 | 1294  | 53                 | 1220  | 52                 | 1127  | 51                 | 1009  | 50                 |       |                    |       |  |  |
| 1362 |      | 928                          | 0.53  | 900                | 0.52  | 869                | 0.50  | 835                | 0.49  | 798                | 0.47  | 758                | 0.45  | 711                | 0.43  | 653                | 0.40  | 571                | 0.37  |                    |       |  |  |
|      |      | 1576                         | 55    | 1530               | 54    | 1476               | 54    | 1419               | 54    | 1353               | 53    | 1288               | 53    | 1208               | 52    | 1109               | 51    | 970                | 52    |                    |       |  |  |
| 1388 |      | 956                          | 0.57  | 929                | 0.55  | 900                | 0.54  | 868                | 0.52  | 834                | 0.51  | 797                | 0.49  | 755                | 0.47  | 703                | 0.45  | 642                | 0.42  |                    |       |  |  |
|      |      | 1624                         | 55    | 1578               | 55    | 1529               | 54    | 1475               | 54    | 1417               | 54    | 1353               | 53    | 1284               | 53    | 1196               | 52    | 1092               | 52    |                    |       |  |  |
| 1414 |      | 983                          | 0.61  | 957                | 0.59  | 930                | 0.58  | 900                | 0.56  | 869                | 0.55  | 834                | 0.53  | 794                | 0.51  | 750                | 0.49  | 697                | 0.46  | 613                | 0.42  |  |  |
|      |      | 1670                         | 55    | 1626               | 55    | 1581               | 55    | 1528               | 55    | 1477               | 54    | 1416               | 54    | 1349               | 54    | 1274               | 53    | 1183               | 52    | 1041               | 51    |  |  |
| 1440 |      | 1011                         | 0.65  | 985                | 0.63  | 961                | 0.62  | 931                | 0.60  | 900                | 0.58  | 869                | 0.57  | 833                | 0.55  | 793                | 0.53  | 746                | 0.51  | 702                | 0.49  |  |  |
|      |      | 1717                         | 56    | 1674               | 56    | 1632               | 55    | 1581               | 55    | 1530               | 55    | 1477               | 55    | 1415               | 54    | 1347               | 54    | 1267               | 53    | 1192               | 53    |  |  |
| 1466 |      | 1038                         | 0.69  | 1013               | 0.67  | 988                | 0.66  | 961                | 0.64  | 932                | 0.62  | 902                | 0.61  | 869                | 0.59  | 835                | 0.57  | 788                | 0.55  | 744                | 0.53  |  |  |
|      |      | 1764                         | 56    | 1722               | 56    | 1679               | 56    | 1633               | 56    | 1583               | 55    | 1532               | 55    | 1476               | 55    | 1419               | 54    | 1340               | 54    | 1264               | 54    |  |  |
| 1492 |      | 1064                         | 0.73  | 1041               | 0.72  | 1017               | 0.70  | 990                | 0.68  | 963                | 0.67  | 935                | 0.65  | 902                | 0.63  | 869                | 0.61  | 830                | 0.59  | 789                | 0.57  |  |  |
|      |      | 1809                         | 57    | 1769               | 56    | 1727               | 56    | 1683               | 56    | 1637               | 56    | 1588               | 56    | 1533               | 55    | 1476               | 55    | 1411               | 55    | 1341               | 54    |  |  |

\*Condiciones Estándar: 0 m.s.n.m. y 20°C.



# CCL 7/7

## CURVA CARACTERÍSTICA







# CCL 9/9

## CARACTERÍSTICAS PRINCIPALES

Diámetro de la turbina: 252 mm (9 15/16 inch)  
 Diámetro del eje: 19.05 mm (3/4 inch)  
 Área de salida: 0.07874 m<sup>2</sup> (0.8476 ft<sup>2</sup>)  
 Máxima potencia de consumo: 1.15 BHP  
 Armazón máximo de motor: 143T  
 RPM máximas: 1300  
 Peso aproximado sin motor: 47 Kg

## TABLA DE FÁCIL ACCESO

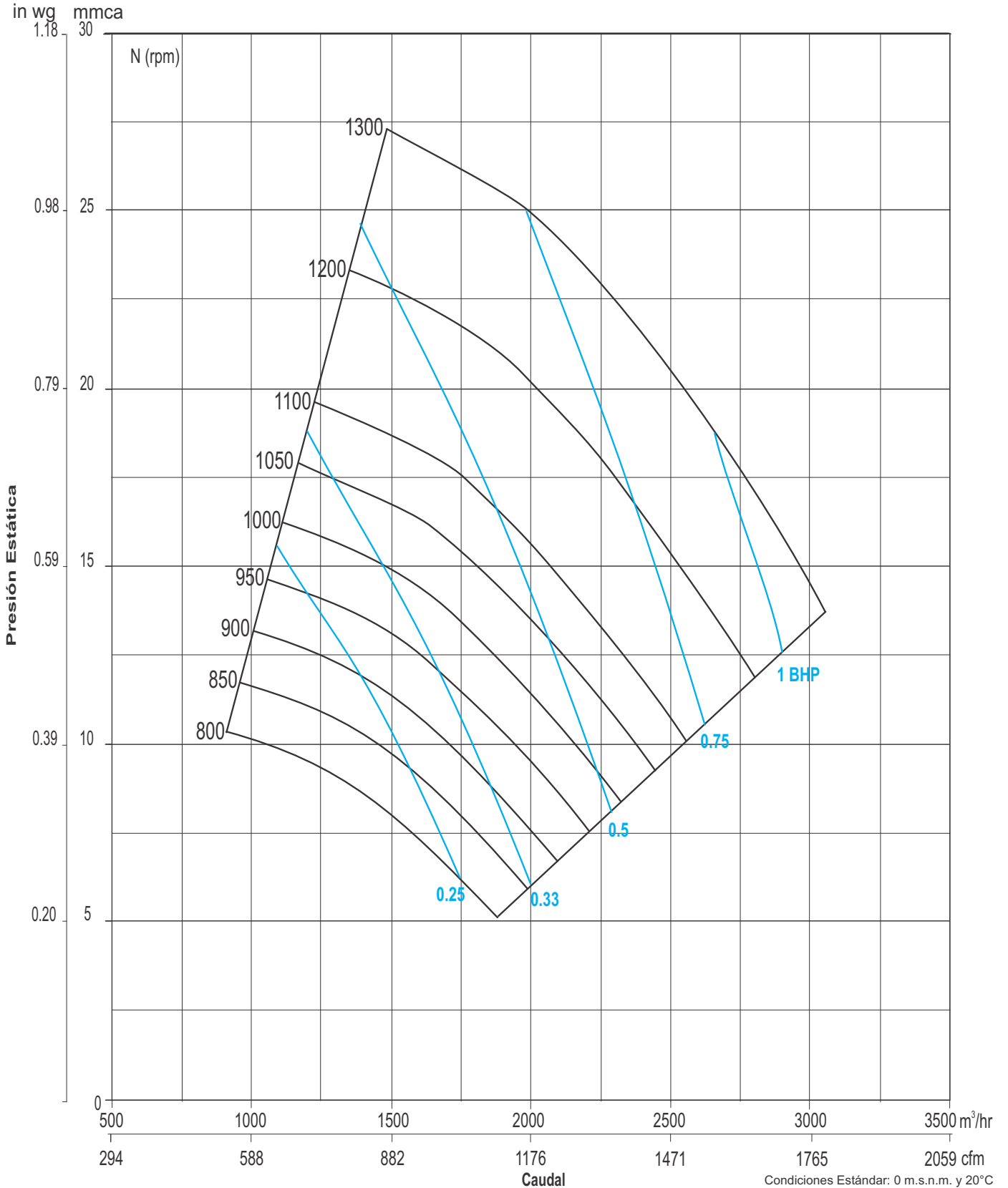
| HP  | RPM  | PRESIÓN ESTÁTICA mmca - inwg |       |                    |       |                    |       |                    |       |                    |       |                    |       |                    |       |                    |       |                    |       |                    |       |  |
|-----|------|------------------------------|-------|--------------------|-------|--------------------|-------|--------------------|-------|--------------------|-------|--------------------|-------|--------------------|-------|--------------------|-------|--------------------|-------|--------------------|-------|--|
|     |      | 15.70mm/0.62"                |       | 16.74mm/0.66"      |       | 17.81mm/0.70"      |       | 18.88mm/0.74"      |       | 19.87mm/0.78"      |       | 20.94mm/0.82"      |       | 22.01mm/0.87"      |       | 23.00mm/0.91"      |       | 24.08mm/0.95"      |       | 25.15mm/0.99"      |       |  |
|     |      | CFM                          | BHP   | CFM                | BHP   | CFM                | BHP   | CFM                | BHP   | CFM                | BHP   | CFM                | BHP   | CFM                | BHP   | CFM                | BHP   | CFM                | BHP   | CFM                | BHP   |  |
|     |      | m <sup>3</sup> /hr           | dB(A) | m <sup>3</sup> /hr | dB(A) | m <sup>3</sup> /hr | dB(A) | m <sup>3</sup> /hr | dB(A) | m <sup>3</sup> /hr | dB(A) | m <sup>3</sup> /hr | dB(A) | m <sup>3</sup> /hr | dB(A) | m <sup>3</sup> /hr | dB(A) | m <sup>3</sup> /hr | dB(A) | m <sup>3</sup> /hr | dB(A) |  |
| 1/2 | 1013 | 853                          | 0.33  |                    |       |                    |       |                    |       |                    |       |                    |       |                    |       |                    |       |                    |       |                    |       |  |
|     |      | 1448                         | 42    |                    |       |                    |       |                    |       |                    |       |                    |       |                    |       |                    |       |                    |       |                    |       |  |
|     | 1030 | 925                          | 0.37  | 791                | 0.33  |                    |       |                    |       |                    |       |                    |       |                    |       |                    |       |                    |       |                    |       |  |
|     |      | 1571                         | 43    | 1343               | 42    |                    |       |                    |       |                    |       |                    |       |                    |       |                    |       |                    |       |                    |       |  |
|     | 1047 | 997                          | 0.41  | 883                | 0.37  |                    |       |                    |       |                    |       |                    |       |                    |       |                    |       |                    |       |                    |       |  |
|     |      | 1694                         | 44    | 1501               | 43    |                    |       |                    |       |                    |       |                    |       |                    |       |                    |       |                    |       |                    |       |  |
|     | 1064 | 1054                         | 0.45  | 962                | 0.41  | 825                | 0.36  |                    |       |                    |       |                    |       |                    |       |                    |       |                    |       |                    |       |  |
|     |      | 1791                         | 45    | 1635               | 44    | 1401               | 43    |                    |       |                    |       |                    |       |                    |       |                    |       |                    |       |                    |       |  |
| 3/4 | 1081 | 1112                         | 0.49  | 1028               | 0.45  | 914                | 0.41  | 734                | 0.34  |                    |       |                    |       |                    |       |                    |       |                    |       |                    |       |  |
|     |      | 1890                         | 45    | 1747               | 45    | 1553               | 44    | 1247               | 42    |                    |       |                    |       |                    |       |                    |       |                    |       |                    |       |  |
|     | 1098 | 1169                         | 0.53  | 1089               | 0.50  | 993                | 0.45  | 863                | 0.40  |                    |       |                    |       |                    |       |                    |       |                    |       |                    |       |  |
|     |      | 1986                         | 46    | 1851               | 45    | 1686               | 45    | 1467               | 44    |                    |       |                    |       |                    |       |                    |       |                    |       |                    |       |  |
|     | 1115 | 1220                         | 0.57  | 1146               | 0.54  | 1058               | 0.50  | 954                | 0.45  | 807                | 0.39  |                    |       |                    |       |                    |       |                    |       |                    |       |  |
|     |      | 2074                         | 47    | 1947               | 46    | 1797               | 45    | 1621               | 44    | 1372               | 43    |                    |       |                    |       |                    |       |                    |       |                    |       |  |
|     | 1132 | 1271                         | 0.61  | 1203               | 0.58  | 1123               | 0.54  | 1028               | 0.50  | 917                | 0.45  |                    |       |                    |       |                    |       |                    |       |                    |       |  |
|     |      | 2159                         | 47    | 2044               | 47    | 1908               | 46    | 1747               | 45    | 1557               | 44    |                    |       |                    |       |                    |       |                    |       |                    |       |  |
|     | 1149 | 1318                         | 0.66  | 1254               | 0.62  | 1182               | 0.59  | 1097               | 0.55  | 998                | 0.50  | 862                | 0.44  |                    |       |                    |       |                    |       |                    |       |  |
|     |      | 2239                         | 48    | 2131               | 47    | 2007               | 47    | 1863               | 46    | 1695               | 45    | 1466               | 44    |                    |       |                    |       |                    |       |                    |       |  |
|     | 1166 | 1368                         | 0.70  | 1305               | 0.67  | 1235               | 0.63  | 1157               | 0.59  | 1073               | 0.55  | 963                | 0.50  |                    |       |                    |       |                    |       |                    |       |  |
|     |      | 2323                         | 49    | 2218               | 48    | 2098               | 47    | 1966               | 47    | 1822               | 46    | 1636               | 45    |                    |       |                    |       |                    |       |                    |       |  |
| 1   | 1183 | 1414                         | 0.75  | 1355               | 0.72  | 1288               | 0.68  | 1215               | 0.64  | 1138               | 0.60  | 1043               | 0.56  | 918                | 0.50  |                    |       |                    |       |                    |       |  |
|     |      | 2402                         | 49    | 2302               | 49    | 2188               | 48    | 2065               | 47    | 1933               | 47    | 1772               | 46    | 1559               | 45    |                    |       |                    |       |                    |       |  |
|     | 1200 | 1459                         | 0.79  | 1399               | 0.76  | 1339               | 0.73  | 1270               | 0.69  | 1200               | 0.65  | 1116               | 0.61  | 1012               | 0.56  | 870                | 0.49  |                    |       |                    |       |  |
|     |      | 2478                         | 50    | 2378               | 49    | 2276               | 49    | 2158               | 48    | 2040               | 47    | 1896               | 47    | 1718               | 46    | 1478               | 45    |                    |       |                    |       |  |
|     | 1217 | 1501                         | 0.84  | 1447               | 0.81  | 1386               | 0.77  | 1322               | 0.74  | 1258               | 0.70  | 1177               | 0.66  | 1088               | 0.61  | 982                | 0.56  |                    |       |                    |       |  |
|     |      | 2549                         | 50    | 2458               | 50    | 2355               | 49    | 2245               | 49    | 2137               | 48    | 1999               | 47    | 1849               | 46    | 1669               | 45    |                    |       |                    |       |  |
|     | 1234 | 1546                         | 0.89  | 1491               | 0.86  | 1436               | 0.83  | 1371               | 0.79  | 1312               | 0.75  | 1237               | 0.71  | 1155               | 0.67  | 1066               | 0.62  | 936                | 0.55  |                    |       |  |
|     |      | 2626                         | 50    | 2533               | 50    | 2440               | 50    | 2330               | 49    | 2229               | 49    | 2102               | 48    | 1963               | 47    | 1811               | 46    | 1590               | 45    |                    |       |  |
|     | 1251 | 1587                         | 0.94  | 1536               | 0.91  | 1481               | 0.88  | 1422               | 0.84  | 1362               | 0.80  | 1296               | 0.76  | 1222               | 0.72  | 1143               | 0.68  | 1039               | 0.62  | 881                | 0.55  |  |
|     |      | 2697                         | 51    | 2610               | 50    | 2516               | 50    | 2416               | 50    | 2314               | 49    | 2201               | 49    | 2076               | 48    | 1942               | 47    | 1764               | 46    | 1498               | 45    |  |
|     | 1268 | 1629                         | 1.00  | 1581               | 0.96  | 1526               | 0.93  | 1469               | 0.89  | 1413               | 0.86  | 1348               | 0.82  | 1280               | 0.78  | 1210               | 0.74  | 1119               | 0.68  | 1002               | 0.62  |  |
|     |      | 2768                         | 51    | 2685               | 51    | 2593               | 50    | 2497               | 50    | 2401               | 50    | 2290               | 49    | 2175               | 49    | 2055               | 48    | 1901               | 47    | 1702               | 46    |  |
|     | 1285 | 1671                         | 1.05  | 1623               | 1.02  | 1571               | 0.98  | 1517               | 0.95  | 1463               | 0.91  | 1402               | 0.87  | 1337               | 0.83  | 1271               | 0.79  | 1186               | 0.74  | 1092               | 0.69  |  |
|     |      | 2840                         | 52    | 2759               | 51    | 2671               | 51    | 2578               | 50    | 2487               | 50    | 2382               | 50    | 2271               | 49    | 2159               | 49    | 2016               | 48    | 1854               | 47    |  |

\*Condiciones Estándar: 0 m.s.n.m. y 20°C.



# CCL 9/9

## CURVA CARACTERÍSTICA





# CCL10/10

## CARACTERÍSTICAS PRINCIPALES

Diámetro de la turbina: 282 mm (11 1/8 inch)  
 Diámetro del eje: 19.05 mm (3/4 inch)  
 Área de salida: 0.0985 m<sup>2</sup> (1.06 ft<sup>2</sup>)  
 Máxima potencia de consumo: 1.45 BHP  
 Armazón máximo de motor: 145T  
 RPM máximas: 1100  
 Peso aproximado sin motor: 55 Kg

## TABLA DE FÁCIL ACCESO

| HP    | RPM  | PRESIÓN ESTÁTICA mmca - inwg |       |                    |       |                    |       |                    |       |                    |       |                    |       |                    |       |                    |       |                    |       |                    |       |                    |       |  |
|-------|------|------------------------------|-------|--------------------|-------|--------------------|-------|--------------------|-------|--------------------|-------|--------------------|-------|--------------------|-------|--------------------|-------|--------------------|-------|--------------------|-------|--------------------|-------|--|
|       |      | 13.10mm/0.52"                |       | 14.26mm/0.56"      |       | 15.26mm/0.60"      |       | 16.33mm/0.64"      |       | 17.40mm/0.69"      |       | 18.47mm/0.73"      |       | 19.48mm/0.77"      |       | 20.53mm/0.81"      |       | 21.60mm/0.85"      |       | 22.59mm/0.89"      |       | 23.67mm/0.93"      |       |  |
|       |      | CFM                          | BHP   | CFM                | BHP   | CFM                | BHP   | CFM                | BHP   | CFM                | BHP   | CFM                | BHP   | CFM                | BHP   | CFM                | BHP   | CFM                | BHP   | CFM                | BHP   | CFM                | BHP   |  |
|       |      | m <sup>3</sup> /hr           | dB(A) | m <sup>3</sup> /hr | dB(A) | m <sup>3</sup> /hr | dB(A) | m <sup>3</sup> /hr | dB(A) | m <sup>3</sup> /hr | dB(A) | m <sup>3</sup> /hr | dB(A) | m <sup>3</sup> /hr | dB(A) | m <sup>3</sup> /hr | dB(A) | m <sup>3</sup> /hr | dB(A) | m <sup>3</sup> /hr | dB(A) | m <sup>3</sup> /hr | dB(A) |  |
| 1/2   | 805  | 1047                         | 0.27  |                    |       |                    |       |                    |       |                    |       |                    |       |                    |       |                    |       |                    |       |                    |       |                    |       |  |
|       |      | 1779                         | 47    |                    |       |                    |       |                    |       |                    |       |                    |       |                    |       |                    |       |                    |       |                    |       |                    |       |  |
|       | 820  | 1149                         | 0.31  | 913                | 0.24  |                    |       |                    |       |                    |       |                    |       |                    |       |                    |       |                    |       |                    |       |                    |       |  |
|       |      | 1952                         | 48    | 1550               | 46    |                    |       |                    |       |                    |       |                    |       |                    |       |                    |       |                    |       |                    |       |                    |       |  |
|       | 835  | 1251                         | 0.36  | 1076               | 0.30  |                    |       |                    |       |                    |       |                    |       |                    |       |                    |       |                    |       |                    |       |                    |       |  |
|       |      | 2125                         | 49    | 1828               | 48    |                    |       |                    |       |                    |       |                    |       |                    |       |                    |       |                    |       |                    |       |                    |       |  |
| 850   | 1336 | 0.40                         | 1178  | 0.34               | 961   | 0.28               |       |                    |       |                    |       |                    |       |                    |       |                    |       |                    |       |                    |       |                    |       |  |
|       | 2269 | 50                           | 2002  | 49                 | 1632  | 47                 |       |                    |       |                    |       |                    |       |                    |       |                    |       |                    |       |                    |       |                    |       |  |
| 865   | 1407 | 0.44                         | 1268  | 0.39               | 1111  | 0.33               |       |                    |       |                    |       |                    |       |                    |       |                    |       |                    |       |                    |       |                    |       |  |
|       | 2391 | 51                           | 2154  | 50                 | 1886  | 48                 |       |                    |       |                    |       |                    |       |                    |       |                    |       |                    |       |                    |       |                    |       |  |
| 3/4   | 880  | 1484                         | 0.49  | 1360               | 0.44  | 1218               | 0.38  | 1013               | 0.31  |                    |       |                    |       |                    |       |                    |       |                    |       |                    |       |                    |       |  |
|       |      | 2521                         | 51    | 2312               | 51    | 2069               | 49    | 1722               | 48    |                    |       |                    |       |                    |       |                    |       |                    |       |                    |       |                    |       |  |
|       | 895  | 1552                         | 0.53  | 1425               | 0.48  | 1317               | 0.43  | 1128               | 0.36  |                    |       |                    |       |                    |       |                    |       |                    |       |                    |       |                    |       |  |
|       |      | 2637                         | 52    | 2421               | 51    | 2238               | 50    | 1917               | 49    |                    |       |                    |       |                    |       |                    |       |                    |       |                    |       |                    |       |  |
|       | 910  | 1629                         | 0.58  | 1525               | 0.53  | 1407               | 0.48  | 1263               | 0.42  | 1053               | 0.35  |                    |       |                    |       |                    |       |                    |       |                    |       |                    |       |  |
|       |      | 2768                         | 53    | 2591               | 52    | 2389               | 51    | 2146               | 50    | 1788               | 49    |                    |       |                    |       |                    |       |                    |       |                    |       |                    |       |  |
| 925   | 1692 | 0.63                         | 1596  | 0.58               | 1483  | 0.53               | 1349  | 0.48               | 1198  | 0.41               |       |                    |       |                    |       |                    |       |                    |       |                    |       |                    |       |  |
|       | 2874 | 54                           | 2712  | 53                 | 2520  | 52                 | 2291  | 51                 | 2036  | 50                 |       |                    |       |                    |       |                    |       |                    |       |                    |       |                    |       |  |
| 940   | 1749 | 0.67                         | 1663  | 0.63               | 1554  | 0.58               | 1431  | 0.52               | 1303  | 0.47               | 1116  | 0.39               |       |                    |       |                    |       |                    |       |                    |       |                    |       |  |
|       | 2971 | 54                           | 2826  | 54                 | 2641  | 53                 | 2431  | 52                 | 2213  | 51                 | 1896  | 50                 |       |                    |       |                    |       |                    |       |                    |       |                    |       |  |
| 1     | 955  | 1811                         | 0.72  | 1731               | 0.68  | 1637               | 0.63  | 1530               | 0.58  | 1407               | 0.53  | 1236               | 0.45  |                    |       |                    |       |                    |       |                    |       |                    |       |  |
|       |      | 3077                         | 55    | 2940               | 54    | 2782               | 54    | 2600               | 53    | 2390               | 52    | 2100               | 51    |                    |       |                    |       |                    |       |                    |       |                    |       |  |
|       | 970  | 1882                         | 0.78  | 1799               | 0.74  | 1703               | 0.68  | 1598               | 0.63  | 1496               | 0.58  | 1356               | 0.52  | 1163               | 0.44  |                    |       |                    |       |                    |       |                    |       |  |
|       |      | 3198                         | 56    | 3057               | 55    | 2894               | 54    | 2715               | 53    | 2542               | 53    | 2304               | 52    | 1976               | 51    |                    |       |                    |       |                    |       |                    |       |  |
|       | 985  | 1940                         | 0.83  | 1857               | 0.76  | 1770               | 0.74  | 1675               | 0.69  | 1571               | 0.63  | 1455               | 0.58  | 1310               | 0.51  | 1093               | 0.42  |                    |       |                    |       |                    |       |  |
|       |      | 3296                         | 56    | 3155               | 55    | 3008               | 55    | 2845               | 54    | 2671               | 53    | 2472               | 53    | 2226               | 52    | 1858               | 51    |                    |       |                    |       |                    |       |  |
| 1000  | 1999 | 0.89                         | 1918  | 0.84               | 1835  | 0.79               | 1751  | 0.75               | 1654  | 0.70               | 1539  | 0.64               | 1413  | 0.57               | 1243  | 0.50               |       |                    |       |                    |       |                    |       |  |
|       | 3395 | 57                           | 3258  | 56                 | 3117  | 55                 | 2976  | 55                 | 2811  | 54                 | 2614  | 53                 | 2401  | 53                 | 2111  | 52                 |       |                    |       |                    |       |                    |       |  |
| 1 1/2 | 1015 | 2055                         | 0.95  | 1980               | 0.90  | 1900               | 0.85  | 1820               | 0.81  | 1722               | 0.75  | 1629               | 0.70  | 1508               | 0.64  | 1367               | 0.57  | 1190               | 0.49  |                    |       |                    |       |  |
|       |      | 3491                         | 57    | 3364               | 57    | 3228               | 56    | 3091               | 55    | 2927               | 55    | 2769               | 54    | 2562               | 53    | 2323               | 53    | 2022               | 52    |                    |       |                    |       |  |
|       | 1030 | 2112                         | 1.00  | 2042               | 0.96  | 1962               | 0.91  | 1882               | 0.86  | 1792               | 0.81  | 1706               | 0.76  | 1588               | 0.70  | 1463               | 0.63  | 1317               | 0.56  |                    |       |                    |       |  |
|       |      | 3589                         | 58    | 3469               | 57    | 3334               | 57    | 3197               | 56    | 3044               | 55    | 2898               | 55    | 2699               | 54    | 2485               | 53    | 2238               | 53    |                    |       |                    |       |  |
|       | 1045 | 2168                         | 1.07  | 2098               | 1.02  | 2023               | 0.97  | 1943               | 0.92  | 1863               | 0.87  | 1773               | 0.82  | 1679               | 0.77  | 1554               | 0.70  | 1445               | 0.64  | 1261               | 0.55  |                    |       |  |
|       |      | 3685                         | 58    | 3563               | 58    | 3438               | 57    | 3301               | 57    | 3165               | 56    | 3013               | 55    | 2853               | 55    | 2641               | 54    | 2455               | 54    | 2144               | 53    |                    |       |  |
| 1060  | 2223 | 1.13                         | 2154  | 1.08               | 2085  | 1.04               | 2008  | 0.99               | 1928  | 0.94               | 1844  | 0.88               | 1748  | 0.82               | 1645  | 0.76               | 1539  | 0.71               | 1395  | 0.63               | 1190  | 0.53               |       |  |
|       | 3777 | 59                           | 3660  | 58                 | 3543  | 58                 | 3413  | 57                 | 3275  | 57                 | 3134  | 56                 | 2970  | 55                 | 2795  | 55                 | 2615  | 54                 | 2370  | 54                 | 2021  | 54                 |       |  |
| 1075  | 2277 | 1.19                         | 2212  | 1.15               | 2144  | 1.10               | 2069  | 1.05               | 1994  | 1.00               | 1916  | 0.95               | 1823  | 0.89               | 1727  | 0.83               | 1626  | 0.77               | 1503  | 0.70               | 1348  | 0.62               |       |  |
|       | 3869 | 59                           | 3759  | 59                 | 3643  | 58                 | 3515  | 58                 | 3389  | 57                 | 3255  | 57                 | 3098  | 56                 | 2934  | 55                 | 2762  | 55                 | 2554  | 54                 | 2290  | 54                 |       |  |
| 1090  | 2333 | 1.26                         | 2270  | 1.21               | 2201  | 1.17               | 2131  | 1.12               | 2059  | 1.07               | 1984  | 1.02               | 1899  | 0.96               | 1802  | 0.90               | 1712  | 0.84               | 1600  | 0.78               | 1470  | 0.70               |       |  |
|       | 3964 | 60                           | 3856  | 59                 | 3740  | 59                 | 3620  | 58                 | 3498  | 58                 | 3370  | 57                 | 3225  | 57                 | 3062  | 56                 | 2909  | 55                 | 2719  | 55                 | 2498  | 54                 |       |  |

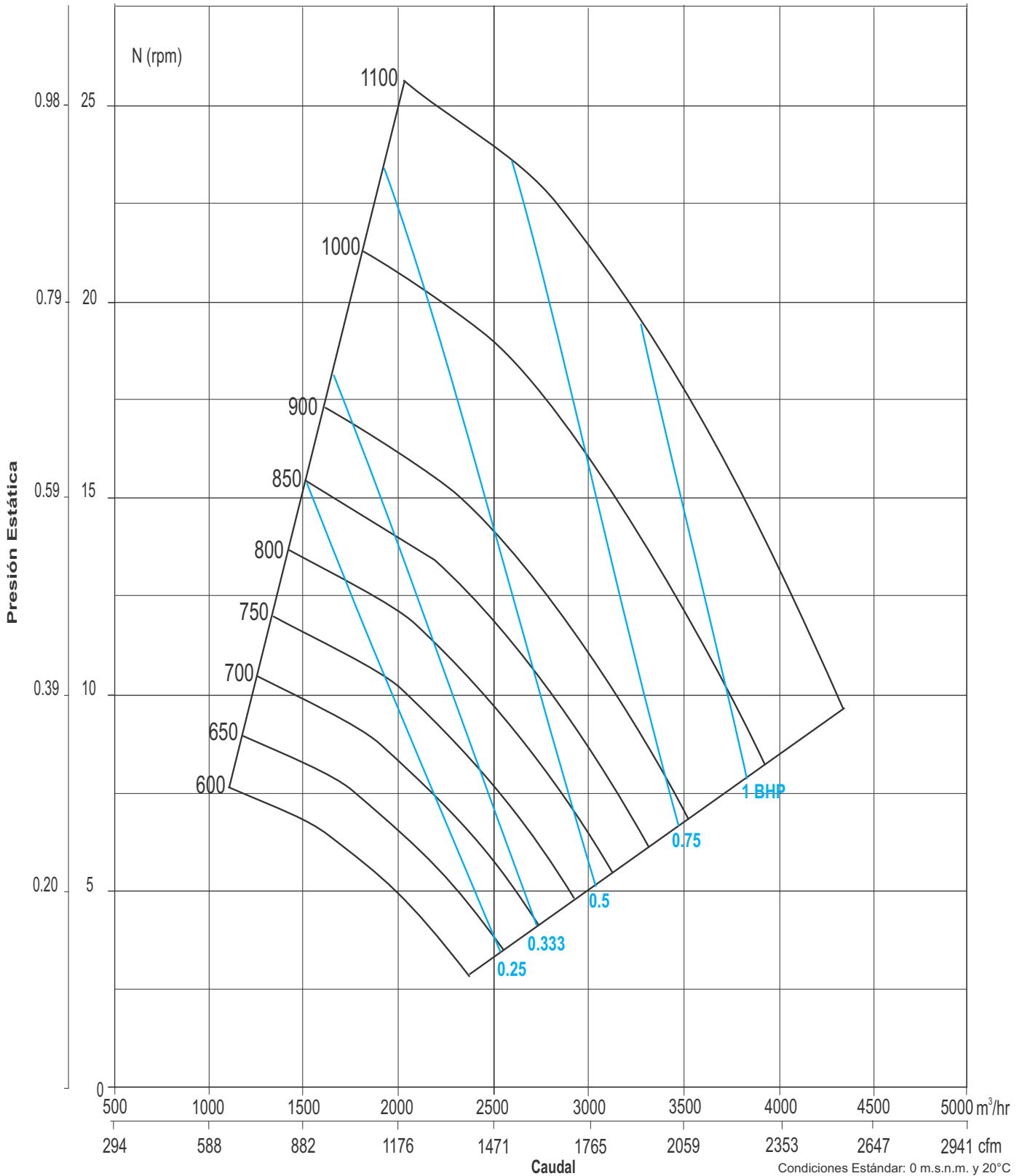
\*Condiciones Estándar: 0 m.s.n.m. y 20°C.



# CCL10/10

## CURVA CARACTERÍSTICA

in wg mmca





# CCL 12/12

## CARACTERÍSTICAS PRINCIPALES

Diámetro de la turbina: 332 mm (13 1/16 inch)  
 Diámetro del eje: 25.4 mm (1 inch)  
 Área de salida: 0.1362 m<sup>2</sup> (1.466 ft<sup>2</sup>)  
 Máxima potencia de consumo: 1.9 BHP  
 Armazón máximo de motor: 145T  
 RPM máximas: 1000  
 Peso aproximado sin motor: 76 Kg

## TABLA DE FÁCIL ACCESO

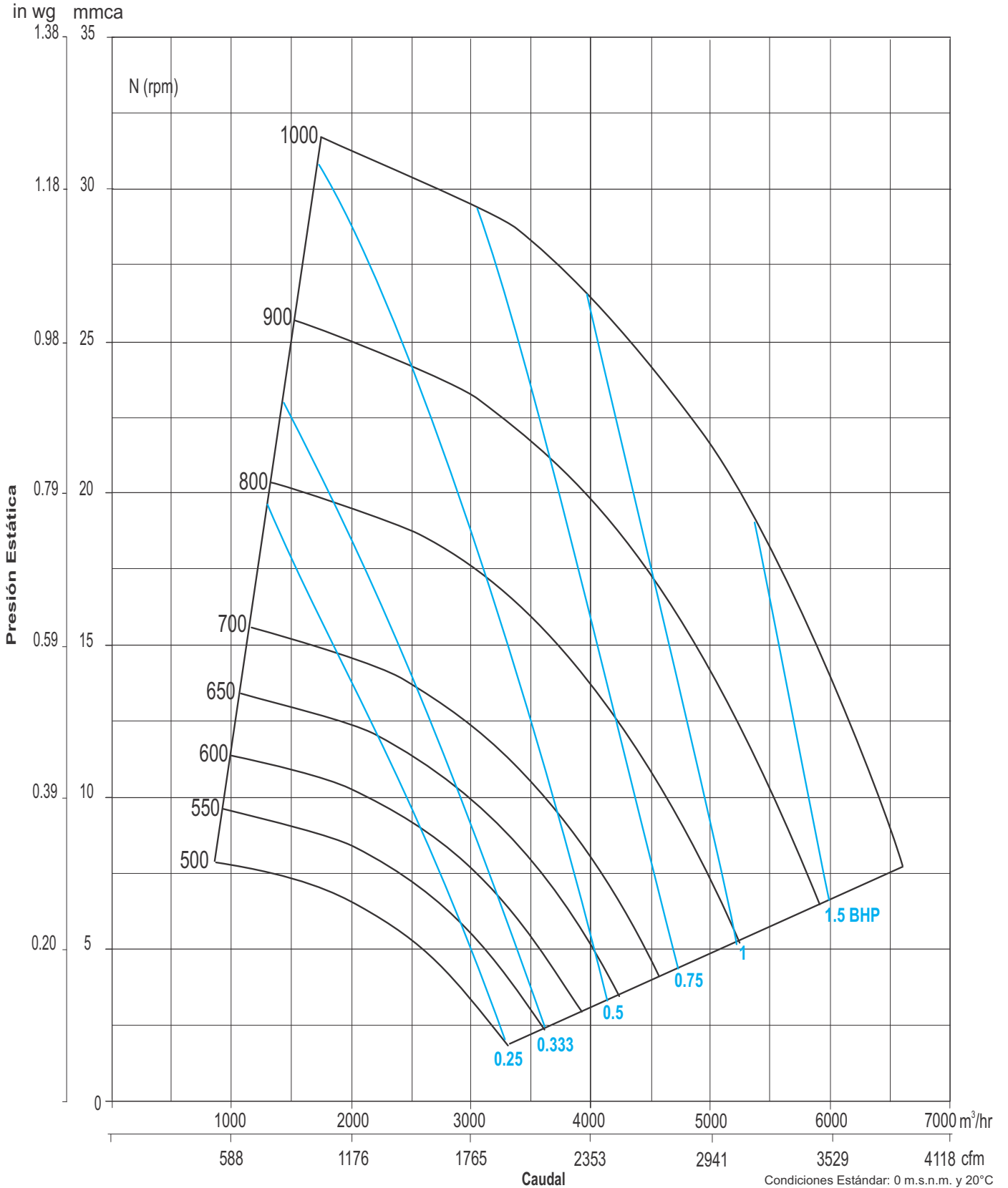
| HP    | RPM  | PRESIÓN ESTÁTICA mmca - inwg |       |                    |       |                    |       |                    |       |                    |       |                    |       |                    |       |                    |       |                    |       |                    |       |  |
|-------|------|------------------------------|-------|--------------------|-------|--------------------|-------|--------------------|-------|--------------------|-------|--------------------|-------|--------------------|-------|--------------------|-------|--------------------|-------|--------------------|-------|--|
|       |      | 13.88mm/0.55"                |       | 15.10mm/0.59"      |       | 16.15mm/0.64"      |       | 17.29mm/0.68"      |       | 18.42mm/0.73"      |       | 19.55mm/0.77"      |       | 22.44mm/0.88"      |       | 25.32mm/0.99"      |       | 28.20mm/1.11"      |       | 31.08mm/1.22"      |       |  |
|       |      | CFM                          | BHP   | CFM                | BHP   | CFM                | BHP   | CFM                | BHP   | CFM                | BHP   | CFM                | BHP   | CFM                | BHP   | CFM                | BHP   | CFM                | BHP   | CFM                | BHP   |  |
|       |      | m <sup>3</sup> /hr           | dB(A) | m <sup>3</sup> /hr | dB(A) | m <sup>3</sup> /hr | dB(A) | m <sup>3</sup> /hr | dB(A) | m <sup>3</sup> /hr | dB(A) | m <sup>3</sup> /hr | dB(A) | m <sup>3</sup> /hr | dB(A) | m <sup>3</sup> /hr | dB(A) | m <sup>3</sup> /hr | dB(A) | m <sup>3</sup> /hr | dB(A) |  |
| 1/2   | 680  | 1120                         | 0.22  |                    |       |                    |       |                    |       |                    |       |                    |       |                    |       |                    |       |                    |       |                    |       |  |
|       |      | 1902                         | 45    |                    |       |                    |       |                    |       |                    |       |                    |       |                    |       |                    |       |                    |       |                    |       |  |
|       | 700  | 1434                         | 0.30  | 983                | 0.21  |                    |       |                    |       |                    |       |                    |       |                    |       |                    |       |                    |       |                    |       |  |
|       |      | 2437                         | 48    | 1670               | 45    |                    |       |                    |       |                    |       |                    |       |                    |       |                    |       |                    |       |                    |       |  |
|       | 720  | 1666                         | 0.37  | 1333               | 0.29  | 883                | 0.21  |                    |       |                    |       |                    |       |                    |       |                    |       |                    |       |                    |       |  |
|       |      | 2829                         | 49    | 2265               | 47    | 1502               | 44    |                    |       |                    |       |                    |       |                    |       |                    |       |                    |       |                    |       |  |
|       | 740  | 1859                         | 0.44  | 1598               | 0.37  | 1311               | 0.30  | 794                | 0.21  |                    |       |                    |       |                    |       |                    |       |                    |       |                    |       |  |
|       |      | 3158                         | 51    | 2716               | 49    | 2228               | 48    | 1348               | 45    |                    |       |                    |       |                    |       |                    |       |                    |       |                    |       |  |
| 3/4   | 760  | 2030                         | 0.52  | 1819               | 0.45  | 1595               | 0.39  | 1254               | 0.30  |                    |       |                    |       |                    |       |                    |       |                    |       |                    |       |  |
|       |      | 3449                         | 52    | 3090               | 51    | 2710               | 50    | 2130               | 48    |                    |       |                    |       |                    |       |                    |       |                    |       |                    |       |  |
|       | 780  | 2187                         | 0.60  | 2008               | 0.54  | 1819               | 0.47  | 1577               | 0.40  | 1232               | 0.32  |                    |       |                    |       |                    |       |                    |       |                    |       |  |
|       |      | 3715                         | 53    | 3411               | 52    | 3091               | 51    | 2679               | 50    | 2093               | 48    |                    |       |                    |       |                    |       |                    |       |                    |       |  |
|       | 800  | 2334                         | 0.68  | 2168               | 0.62  | 2011               | 0.56  | 1805               | 0.49  | 1554               | 0.42  | 1187               | 0.33  |                    |       |                    |       |                    |       |                    |       |  |
|       |      | 3964                         | 54    | 3683               | 53    | 3417               | 52    | 3068               | 51    | 2641               | 50    | 2017               | 48    |                    |       |                    |       |                    |       |                    |       |  |
| 1     | 820  | 2472                         | 0.77  | 2322               | 0.71  | 2192               | 0.66  | 2011               | 0.59  | 1804               | 0.51  | 1547               | 0.43  |                    |       |                    |       |                    |       |                    |       |  |
|       |      | 4200                         | 55    | 3945               | 54    | 3725               | 54    | 3415               | 53    | 3066               | 51    | 2629               | 50    |                    |       |                    |       |                    |       |                    |       |  |
|       | 840  | 2602                         | 0.86  | 2469               | 0.80  | 2348               | 0.75  | 2190               | 0.68  | 2016               | 0.61  | 1804               | 0.54  |                    |       |                    |       |                    |       |                    |       |  |
| 4422  |      | 56                           | 4195  | 55                 | 3990  | 55                 | 3722  | 54                 | 3425  | 53                 | 3065  | 52                 |       |                    |       |                    |       |                    |       |                    |       |  |
| 1 1/2 | 860  | 2729                         | 0.95  | 2609               | 0.90  | 2490               | 0.84  | 2354               | 0.78  | 2200               | 0.71  | 2018               | 0.64  | 1326               | 0.42  |                    |       |                    |       |                    |       |  |
|       |      | 4637                         | 57    | 4432               | 56    | 4231               | 56    | 3998               | 55    | 3738               | 54    | 3429               | 53    | 2252               | 50    |                    |       |                    |       |                    |       |  |
|       | 880  | 2847                         | 1.05  | 2726               | 0.99  | 2629               | 0.94  | 2507               | 0.88  | 2368               | 0.82  | 2221               | 0.75  | 1665               | 0.54  |                    |       |                    |       |                    |       |  |
|       |      | 4836                         | 58    | 4630               | 57    | 4466               | 57    | 4260               | 56    | 4022               | 55    | 3774               | 54    | 2829               | 52    |                    |       |                    |       |                    |       |  |
|       | 900  | 2970                         | 1.15  | 2859               | 1.09  | 2763               | 1.04  | 2654               | 0.99  | 2524               | 0.92  | 2382               | 0.86  | 1939               | 0.66  | 1081               | 0.41  |                    |       |                    |       |  |
|       |      | 5046                         | 59    | 4858               | 58    | 4694               | 57    | 4509               | 57    | 4288               | 56    | 4048               | 56    | 3295               | 53    | 1837               | 49    |                    |       |                    |       |  |
|       | 920  | 3084                         | 1.26  | 2984               | 1.20  | 2891               | 1.15  | 2785               | 1.09  | 2672               | 1.03  | 2550               | 0.97  | 2152               | 0.78  | 1536               | 0.55  |                    |       |                    |       |  |
|       |      | 5241                         | 59    | 5070               | 59    | 4911               | 58    | 4732               | 58    | 4540               | 57    | 4333               | 57    | 3656               | 55    | 2610               | 52    |                    |       |                    |       |  |
|       | 940  | 3195                         | 1.37  | 3102               | 1.32  | 3014               | 1.26  | 2916               | 1.21  | 2809               | 1.15  | 2693               | 1.08  | 2345               | 0.90  | 1854               | 0.69  |                    |       |                    |       |  |
|       |      | 5429                         | 60    | 5269               | 59    | 5121               | 59    | 4954               | 59    | 4773               | 58    | 4576               | 58    | 3983               | 56    | 3151               | 53    |                    |       |                    |       |  |
| 2     | 960  | 3307                         | 1.49  | 3217               | 1.43  | 3137               | 1.38  | 3042               | 1.32  | 2942               | 1.26  | 2836               | 1.20  | 2519               | 1.03  | 2100               | 0.82  | 1411               | 0.56  |                    |       |  |
|       |      | 5618                         | 60    | 5465               | 60    | 5329               | 60    | 5168               | 59    | 4999               | 59    | 4818               | 59    | 4281               | 57    | 3568               | 55    | 2396               | 52    |                    |       |  |
|       | 980  | 3415                         | 1.61  | 3333               | 1.56  | 3253               | 1.50  | 3168               | 1.45  | 3071               | 1.39  | 2972               | 1.33  | 2684               | 1.15  | 2317               | 0.96  | 1791               | 0.72  |                    |       |  |
|       |      | 5803                         | 61    | 5662               | 61    | 5526               | 60    | 5383               | 60    | 5218               | 60    | 5049               | 59    | 4560               | 58    | 3936               | 56    | 3043               | 54    |                    |       |  |
|       | 1000 | 3523                         | 1.74  | 3442               | 1.68  | 3367               | 1.63  | 3288               | 1.58  | 3200               | 1.52  | 3103               | 1.45  | 2841               | 1.29  | 2512               | 1.1   | 2071               | 0.87  | 1304               | 0.58  |  |
|       |      | 5986                         | 61    | 5849               | 61    | 5721               | 61    | 5585               | 61    | 5435               | 60    | 5272               | 60    | 4826               | 59    | 4268               | 57    | 3518               | 55    | 2216               | 52    |  |

\*Condiciones Estándar: 0 m.s.n.m. y 20°C.



# CCL12/12

## CURVA CARACTERÍSTICA





# CCL 15/15

## CARACTERÍSTICAS PRINCIPALES

Diámetro de la turbina: 382 mm (15 1/16 inch)  
 Diámetro del eje: 25.4 mm (1 inch)  
 Área de salida: 0.1903 m<sup>2</sup> (2.048 ft<sup>2</sup>)  
 Máxima potencia de consumo: 2.6 BHP  
 Armazón máximo de motor: 182T  
 RPM máximas: 800  
 Peso aproximado sin motor: 90 Kg

## TABLA DE FÁCIL ACCESO

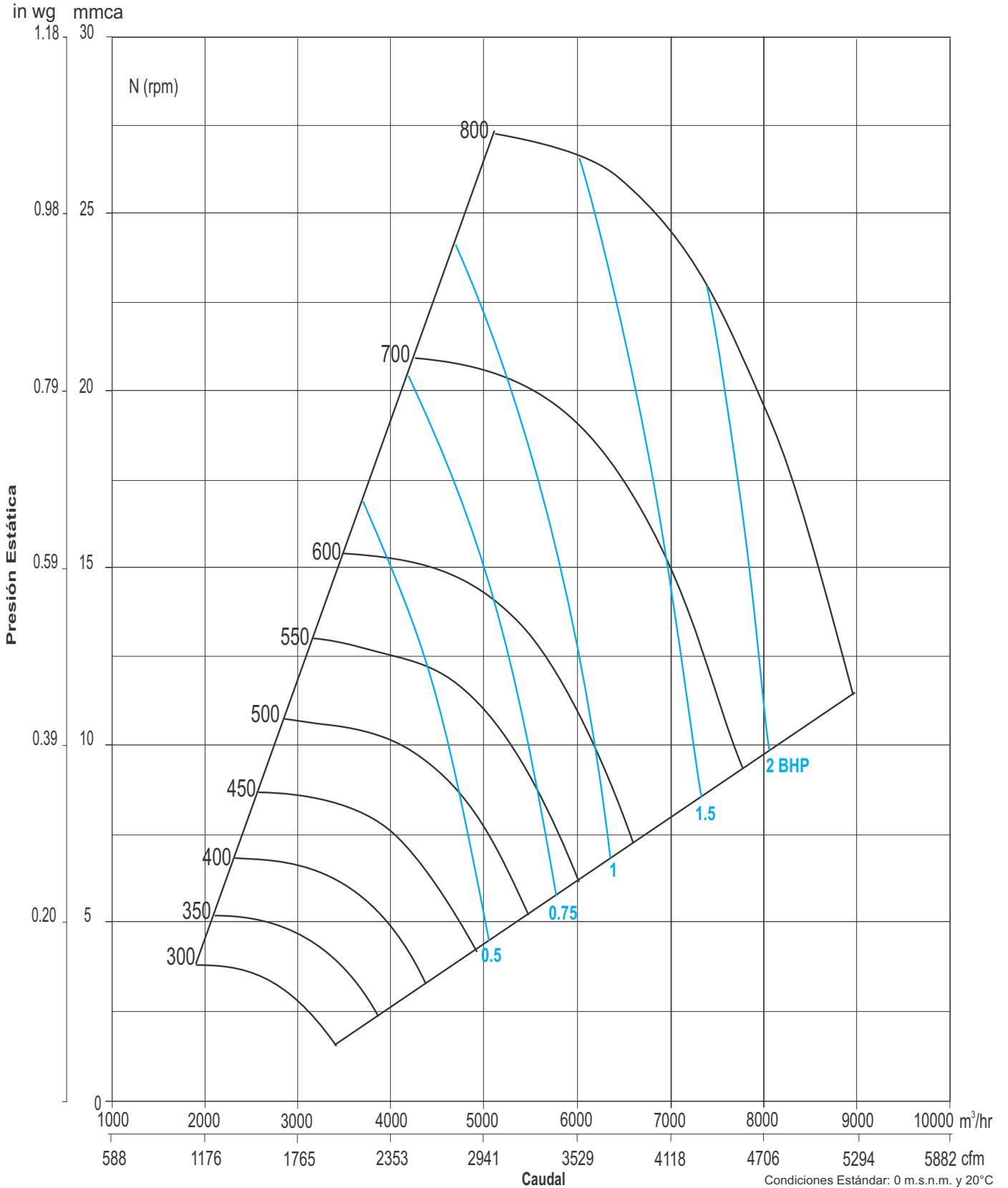
| HP    | RPM | PRESIÓN ESTÁTICA mmca - inwg |       |                    |       |                    |       |                    |       |                    |       |                    |       |                    |       |                    |       |                    |       |                    |       |                    |       |                    |       |
|-------|-----|------------------------------|-------|--------------------|-------|--------------------|-------|--------------------|-------|--------------------|-------|--------------------|-------|--------------------|-------|--------------------|-------|--------------------|-------|--------------------|-------|--------------------|-------|--------------------|-------|
|       |     | 16.15mm/0.64"                |       | 17.28mm/0.68"      |       | 18.42mm/0.73"      |       | 19.55mm/0.77"      |       | 20.60mm/0.81"      |       | 21.74mm/0.86"      |       | 22.87mm/0.90"      |       | 23.92mm/0.94"      |       | 25.05mm/0.99"      |       | 26.19mm/1.03"      |       | 27.24mm/1.07"      |       |                    |       |
|       |     | CFM                          | BHP   | CFM                | BHP   | CFM                | BHP   | CFM                | BHP   | CFM                | BHP   | CFM                | BHP   | CFM                | BHP   | CFM                | BHP   | CFM                | BHP   | CFM                | BHP   | CFM                | BHP   |                    |       |
|       |     | m <sup>3</sup> /hr           | dB(A) | m <sup>3</sup> /hr | dB(A) | m <sup>3</sup> /hr | dB(A) | m <sup>3</sup> /hr | dB(A) | m <sup>3</sup> /hr | dB(A) | m <sup>3</sup> /hr | dB(A) | m <sup>3</sup> /hr | dB(A) | m <sup>3</sup> /hr | dB(A) | m <sup>3</sup> /hr | dB(A) | m <sup>3</sup> /hr | dB(A) | m <sup>3</sup> /hr | dB(A) | m <sup>3</sup> /hr | dB(A) |
| 1     | 626 | 2809                         | 0.73  |                    |       |                    |       |                    |       |                    |       |                    |       |                    |       |                    |       |                    |       |                    |       |                    |       |                    |       |
|       |     | 4773                         | 49    |                    |       |                    |       |                    |       |                    |       |                    |       |                    |       |                    |       |                    |       |                    |       |                    |       |                    |       |
|       | 637 | 3107                         | 0.86  | 2534               | 0.66  |                    |       |                    |       |                    |       |                    |       |                    |       |                    |       |                    |       |                    |       |                    |       |                    |       |
|       |     | 5278                         | 50    | 4306               | 49    |                    |       |                    |       |                    |       |                    |       |                    |       |                    |       |                    |       |                    |       |                    |       |                    |       |
| 1 1/2 | 648 | 3310                         | 0.97  | 2952               | 0.83  |                    |       |                    |       |                    |       |                    |       |                    |       |                    |       |                    |       |                    |       |                    |       |                    |       |
|       |     | 5623                         | 51    | 5016               | 50    |                    |       |                    |       |                    |       |                    |       |                    |       |                    |       |                    |       |                    |       |                    |       |                    |       |
|       | 659 | 3484                         | 1.07  | 3226               | 0.96  | 2710               | 0.77  |                    |       |                    |       |                    |       |                    |       |                    |       |                    |       |                    |       |                    |       |                    |       |
|       |     | 5920                         | 52    | 5481               | 51    | 4603               | 49    |                    |       |                    |       |                    |       |                    |       |                    |       |                    |       |                    |       |                    |       |                    |       |
|       | 670 | 3627                         | 1.17  | 3425               | 1.07  | 3106               | 0.94  |                    |       |                    |       |                    |       |                    |       |                    |       |                    |       |                    |       |                    |       |                    |       |
|       |     | 6163                         | 53    | 5819               | 52    | 5277               | 51    |                    |       |                    |       |                    |       |                    |       |                    |       |                    |       |                    |       |                    |       |                    |       |
|       | 681 | 3771                         | 1.27  | 3594               | 1.18  | 3340               | 1.06  | 2855               | 0.86  |                    |       |                    |       |                    |       |                    |       |                    |       |                    |       |                    |       |                    |       |
|       |     | 6408                         | 54    | 6106               | 53    | 5675               | 52    | 4850               | 50    |                    |       |                    |       |                    |       |                    |       |                    |       |                    |       |                    |       |                    |       |
|       | 692 | 3897                         | 1.37  | 3735               | 1.28  | 3531               | 1.18  | 3235               | 1.05  |                    |       |                    |       |                    |       |                    |       |                    |       |                    |       |                    |       |                    |       |
|       |     | 6622                         | 54    | 6346               | 54    | 5999               | 53    | 5496               | 52    |                    |       |                    |       |                    |       |                    |       |                    |       |                    |       |                    |       |                    |       |
| 2     | 703 | 4018                         | 1.47  | 3872               | 1.38  | 3697               | 1.29  | 3476               | 1.18  | 3131               | 1.03  |                    |       |                    |       |                    |       |                    |       |                    |       |                    |       |                    |       |
|       |     | 6828                         | 55    | 6578               | 54    | 6281               | 54    | 5907               | 53    | 5318               | 52    |                    |       |                    |       |                    |       |                    |       |                    |       |                    |       |                    |       |
|       | 714 | 4137                         | 1.57  | 4007               | 1.49  | 3847               | 1.40  | 3655               | 1.30  | 3401               | 1.18  | 2797               | 0.92  |                    |       |                    |       |                    |       |                    |       |                    |       |                    |       |
|       |     | 7029                         | 55    | 6809               | 55    | 6536               | 54    | 6211               | 54    | 5778               | 53    | 4752               | 50    |                    |       |                    |       |                    |       |                    |       |                    |       |                    |       |
|       | 725 | 4251                         | 1.67  | 4129               | 1.60  | 3989               | 1.52  | 3816               | 1.42  | 3626               | 1.32  | 3296               | 1.16  |                    |       |                    |       |                    |       |                    |       |                    |       |                    |       |
|       |     | 7222                         | 56    | 7015               | 55    | 6777               | 55    | 6484               | 54    | 6160               | 54    | 5600               | 53    |                    |       |                    |       |                    |       |                    |       |                    |       |                    |       |
|       | 736 | 4362                         | 1.78  | 4251               | 1.71  | 4120               | 1.63  | 3968               | 1.54  | 3805               | 1.45  | 3559               | 1.32  | 3105               | 1.10  |                    |       |                    |       |                    |       |                    |       |                    |       |
|       |     | 7412                         | 56    | 7222               | 56    | 6999               | 55    | 6741               | 55    | 6465               | 54    | 6046               | 54    | 5276               | 52    |                    |       |                    |       |                    |       |                    |       |                    |       |
| 3     | 747 | 4470                         | 1.89  | 4365               | 1.82  | 4250               | 1.74  | 4108               | 1.66  | 3957               | 1.57  | 3754               | 1.45  | 3450               | 1.29  |                    |       |                    |       |                    |       |                    |       |                    |       |
|       |     | 7594                         | 57    | 7416               | 56    | 7221               | 56    | 6980               | 55    | 6723               | 55    | 6377               | 54    | 5862               | 54    |                    |       |                    |       |                    |       |                    |       |                    |       |
|       | 758 | 4577                         | 2.00  | 4479               | 1.93  | 4369               | 1.86  | 4243               | 1.78  | 4105               | 1.69  | 3936               | 1.59  | 3695               | 1.46  | 3337               | 1.27  |                    |       |                    |       |                    |       |                    |       |
|       |     | 7777                         | 57    | 7611               | 57    | 7423               | 56    | 7208               | 56    | 6974               | 55    | 6688               | 55    | 6279               | 54    | 5670               | 53    |                    |       |                    |       |                    |       |                    |       |
|       | 769 | 4686                         | 2.12  | 4590               | 2.05  | 4485               | 1.98  | 4368               | 1.90  | 4250               | 1.82  | 4100               | 1.73  | 3912               | 1.61  | 3656               | 1.47  | 3085               | 1.18  |                    |       |                    |       |                    |       |
|       |     | 7962                         | 57    | 7799               | 57    | 7620               | 57    | 7422               | 57    | 7220               | 56    | 6966               | 56    | 6646               | 55    | 6211               | 54    | 5242               | 53    |                    |       |                    |       |                    |       |
|       | 780 | 4786                         | 2.23  | 4697               | 2.17  | 4596               | 2.10  | 4489               | 2.02  | 4375               | 1.94  | 4239               | 1.85  | 4072               | 1.75  | 3873               | 1.63  | 3566               | 1.45  |                    |       |                    |       |                    |       |
|       |     | 8131                         | 58    | 7980               | 58    | 7809               | 57    | 7627               | 57    | 7434               | 57    | 7202               | 56    | 6918               | 56    | 6579               | 55    | 6059               | 54    |                    |       |                    |       |                    |       |
|       | 791 | 4889                         | 2.36  | 4804               | 2.29  | 4712               | 2.22  | 4610               | 2.15  | 4508               | 2.08  | 4384               | 1.99  | 4238               | 1.89  | 4065               | 1.78  | 3842               | 1.65  | 3465               | 1.43  |                    |       |                    |       |
|       |     | 8307                         | 58    | 8163               | 58    | 8005               | 58    | 7833               | 58    | 7660               | 57    | 7448               | 57    | 7201               | 56    | 6905               | 56    | 6527               | 55    | 5887               | 54    |                    |       |                    |       |
|       | 802 | 4990                         | 2.48  | 4907               | 2.42  | 4818               | 2.35  | 4723               | 2.28  | 4630               | 2.21  | 4513               | 2.12  | 4383               | 2.03  | 4235               | 1.93  | 4032               | 1.80  | 3767               | 1.64  | 3215               | 1.34  |                    |       |
|       |     | 8478                         | 59    | 8337               | 59    | 8186               | 58    | 8025               | 58    | 7865               | 58    | 7668               | 57    | 7447               | 57    | 7195               | 57    | 6851               | 56    | 6400               | 55    | 5462               | 54    |                    |       |

\*Condiciones Estándar: 0 m.s.n.m. y 20°C.



# CCL15/15

## CURVA CARACTERÍSTICA







# CCL 18/18

## CARACTERÍSTICAS PRINCIPALES

Diámetro de la turbina: 468 mm (18 3/8 inch)  
 Diámetro del eje: 25.4 mm (1 inch)  
 Área de salida: 0.266 m<sup>2</sup> (2.866 ft<sup>2</sup>)  
 Máxima potencia de consumo: 5.38 BHP  
 Armazón máximo de motor: 184T  
 RPM máximas: 750  
 Peso aproximado sin motor: 138 Kg

## TABLA DE FÁCIL ACCESO

| HP    | RPM | PRESIÓN ESTÁTICA mmca - inwg |       |                    |       |                    |       |                    |       |                    |       |                    |       |                    |       |                    |       |                    |       |                    |       |  |
|-------|-----|------------------------------|-------|--------------------|-------|--------------------|-------|--------------------|-------|--------------------|-------|--------------------|-------|--------------------|-------|--------------------|-------|--------------------|-------|--------------------|-------|--|
|       |     | 11.09mm/0.44"                |       | 13.27mm/0.52"      |       | 14.40mm/0.57"      |       | 17.72mm/0.70"      |       | 19.99mm/0.79"      |       | 22.87mm/0.90"      |       | 25.75mm/1.01"      |       | 28.63mm/1.13"      |       | 31.51mm/1.24"      |       | 34.39mm/1.35"      |       |  |
|       |     | CFM                          | BHP   | CFM                | BHP   | CFM                | BHP   | CFM                | BHP   | CFM                | BHP   | CFM                | BHP   | CFM                | BHP   | CFM                | BHP   | CFM                | BHP   | CFM                | BHP   |  |
|       |     | m <sup>3</sup> /hr           | dB(A) | m <sup>3</sup> /hr | dB(A) | m <sup>3</sup> /hr | dB(A) | m <sup>3</sup> /hr | dB(A) | m <sup>3</sup> /hr | dB(A) | m <sup>3</sup> /hr | dB(A) | m <sup>3</sup> /hr | dB(A) | m <sup>3</sup> /hr | dB(A) | m <sup>3</sup> /hr | dB(A) | m <sup>3</sup> /hr | dB(A) |  |
| 1 1/2 | 485 | 3944                         | 0.92  | 3111               | 0.71  | 2517               | 0.58  |                    |       |                    |       |                    |       |                    |       |                    |       |                    |       |                    |       |  |
|       |     | 6701                         | 47    | 5286               | 46    | 4276               | 46    |                    |       |                    |       |                    |       |                    |       |                    |       |                    |       |                    |       |  |
|       | 500 | 4288                         | 1.07  | 3578               | 0.87  | 3097               | 0.75  |                    |       |                    |       |                    |       |                    |       |                    |       |                    |       |                    |       |  |
|       |     | 7286                         | 48    | 6080               | 47    | 5261               | 46    |                    |       |                    |       |                    |       |                    |       |                    |       |                    |       |                    |       |  |
|       | 515 | 4578                         | 1.22  | 3953               | 1.03  | 3566               | 0.92  |                    |       |                    |       |                    |       |                    |       |                    |       |                    |       |                    |       |  |
|       |     | 7778                         | 48    | 6716               | 47    | 6059               | 47    |                    |       |                    |       |                    |       |                    |       |                    |       |                    |       |                    |       |  |
|       | 530 | 4878                         | 1.39  | 4314               | 1.20  | 3967               | 1.09  | 2312               | 0.66  |                    |       |                    |       |                    |       |                    |       |                    |       |                    |       |  |
|       |     | 8288                         | 49    | 7331               | 48    | 6740               | 48    | 3928               | 46    |                    |       |                    |       |                    |       |                    |       |                    |       |                    |       |  |
| 2     | 545 | 5146                         | 1.56  | 4631               | 1.37  | 4328               | 1.27  | 3071               | 0.89  |                    |       |                    |       |                    |       |                    |       |                    |       |                    |       |  |
|       |     | 8743                         | 49    | 7869               | 48    | 7354               | 48    | 5218               | 47    |                    |       |                    |       |                    |       |                    |       |                    |       |                    |       |  |
|       | 560 | 5419                         | 1.74  | 4949               | 1.56  | 4664               | 1.45  | 3606               | 1.10  |                    |       |                    |       |                    |       |                    |       |                    |       |                    |       |  |
|       |     | 9206                         | 50    | 8408               | 49    | 7925               | 49    | 6128               | 48    |                    |       |                    |       |                    |       |                    |       |                    |       |                    |       |  |
| 3     | 575 | 5693                         | 1.94  | 5239               | 1.75  | 4972               | 1.64  | 4048               | 1.30  | 3113               | 1.01  |                    |       |                    |       |                    |       |                    |       |                    |       |  |
|       |     | 9672                         | 51    | 8900               | 50    | 8446               | 50    | 6877               | 48    | 5289               | 47    |                    |       |                    |       |                    |       |                    |       |                    |       |  |
|       | 590 | 5950                         | 2.15  | 5524               | 1.96  | 5288               | 1.85  | 4444               | 1.52  | 3664               | 1.24  |                    |       |                    |       |                    |       |                    |       |                    |       |  |
|       |     | 10108                        | 52    | 9386               | 51    | 8984               | 51    | 7551               | 49    | 6225               | 48    |                    |       |                    |       |                    |       |                    |       |                    |       |  |
|       | 605 | 6189                         | 2.36  | 5791               | 2.17  | 5566               | 2.06  | 4803               | 1.73  | 4142               | 1.48  | 2774               | 1.02  |                    |       |                    |       |                    |       |                    |       |  |
|       |     | 10515                        | 53    | 9840               | 52    | 9457               | 51    | 8161               | 50    | 7037               | 49    | 4714               | 47    |                    |       |                    |       |                    |       |                    |       |  |
|       | 620 | 6445                         | 2.60  | 6071               | 2.40  | 5861               | 2.30  | 5152               | 1.97  | 4568               | 1.72  | 3551               | 1.33  |                    |       |                    |       |                    |       |                    |       |  |
|       |     | 10950                        | 54    | 10314              | 53    | 9958               | 52    | 8754               | 51    | 7760               | 50    | 6034               | 48    |                    |       |                    |       |                    |       |                    |       |  |
| 5     | 635 | 6685                         | 2.84  | 6330               | 2.64  | 6118               | 2.53  | 5460               | 2.20  | 4941               | 1.96  | 4075               | 1.60  | 2510               | 1.05  |                    |       |                    |       |                    |       |  |
|       |     | 11358                        | 54    | 10754              | 54    | 10394              | 53    | 9276               | 52    | 8395               | 51    | 6924               | 49    | 4264               | 47    |                    |       |                    |       |                    |       |  |
|       | 650 | 6922                         | 3.09  | 6582               | 2.89  | 6390               | 2.78  | 5777               | 2.45  | 5290               | 2.21  | 4532               | 1.87  | 3400               | 1.42  |                    |       |                    |       |                    |       |  |
|       |     | 11761                        | 55    | 11183              | 54    | 10858              | 54    | 9814               | 53    | 8987               | 52    | 7699               | 50    | 5778               | 48    |                    |       |                    |       |                    |       |  |
|       | 665 | 7160                         | 3.36  | 6831               | 3.15  | 6650               | 3.04  | 6070               | 2.71  | 5618               | 2.47  | 4929               | 2.13  | 3984               | 1.72  | 2112               | 1.04  |                    |       |                    |       |  |
|       |     | 12164                        | 56    | 11606              | 55    | 11297              | 55    | 10313              | 54    | 9545               | 53    | 8375               | 51    | 6770               | 49    | 3588               | 47    |                    |       |                    |       |  |
|       | 680 | 7388                         | 3.63  | 7073               | 3.43  | 6904               | 3.32  | 6353               | 2.99  | 5930               | 2.75  | 5305               | 2.41  | 4518               | 2.03  | 3342               | 1.54  |                    |       |                    |       |  |
|       |     | 12553                        | 56    | 12017              | 55    | 11729              | 55    | 10794              | 54    | 10076              | 53    | 9013               | 52    | 7675               | 51    | 5677               | 49    |                    |       |                    |       |  |
|       | 695 | 7614                         | 3.92  | 7314               | 3.72  | 7147               | 3.60  | 6629               | 3.27  | 6226               | 3.03  | 5654               | 2.70  | 4949               | 2.33  | 4010               | 1.89  |                    |       |                    |       |  |
|       |     | 12937                        | 57    | 12426              | 56    | 12143              | 56    | 11262              | 55    | 10578              | 54    | 9607               | 53    | 8409               | 52    | 6812               | 50    |                    |       |                    |       |  |
|       | 710 | 7843                         | 4.23  | 7549               | 4.02  | 7393               | 3.91  | 6892               | 3.57  | 6508               | 3.32  | 5970               | 2.99  | 5338               | 2.64  | 4543               | 2.23  | 3285               | 1.66  |                    |       |  |
|       |     | 13325                        | 57    | 12825              | 57    | 12562              | 56    | 11710              | 55    | 11057              | 55    | 10143              | 54    | 9068               | 53    | 7718               | 51    | 5581               | 49    |                    |       |  |
|       | 725 | 8067                         | 4.55  | 7786               | 4.33  | 7639               | 4.22  | 7160               | 3.88  | 6795               | 3.63  | 6292               | 3.31  | 5707               | 2.95  | 5000               | 2.56  | 4027               | 2.07  |                    |       |  |
|       |     | 13707                        | 58    | 13229              | 57    | 12979              | 57    | 12165              | 56    | 11545              | 55    | 10689              | 55    | 9696               | 54    | 8495               | 52    | 6842               | 50    |                    |       |  |
|       | 740 | 8294                         | 4.88  | 8019               | 4.66  | 7874               | 4.55  | 7412               | 4.20  | 7063               | 3.95  | 6582               | 3.62  | 6044               | 3.28  | 5407               | 2.89  | 4570               | 2.44  | 3276               | 1.82  |  |
|       |     | 14091                        | 59    | 13624              | 58    | 13377              | 58    | 12592              | 57    | 11999              | 56    | 11184              | 55    | 10269              | 54    | 9187               | 53    | 7765               | 52    | 5567               | 49    |  |

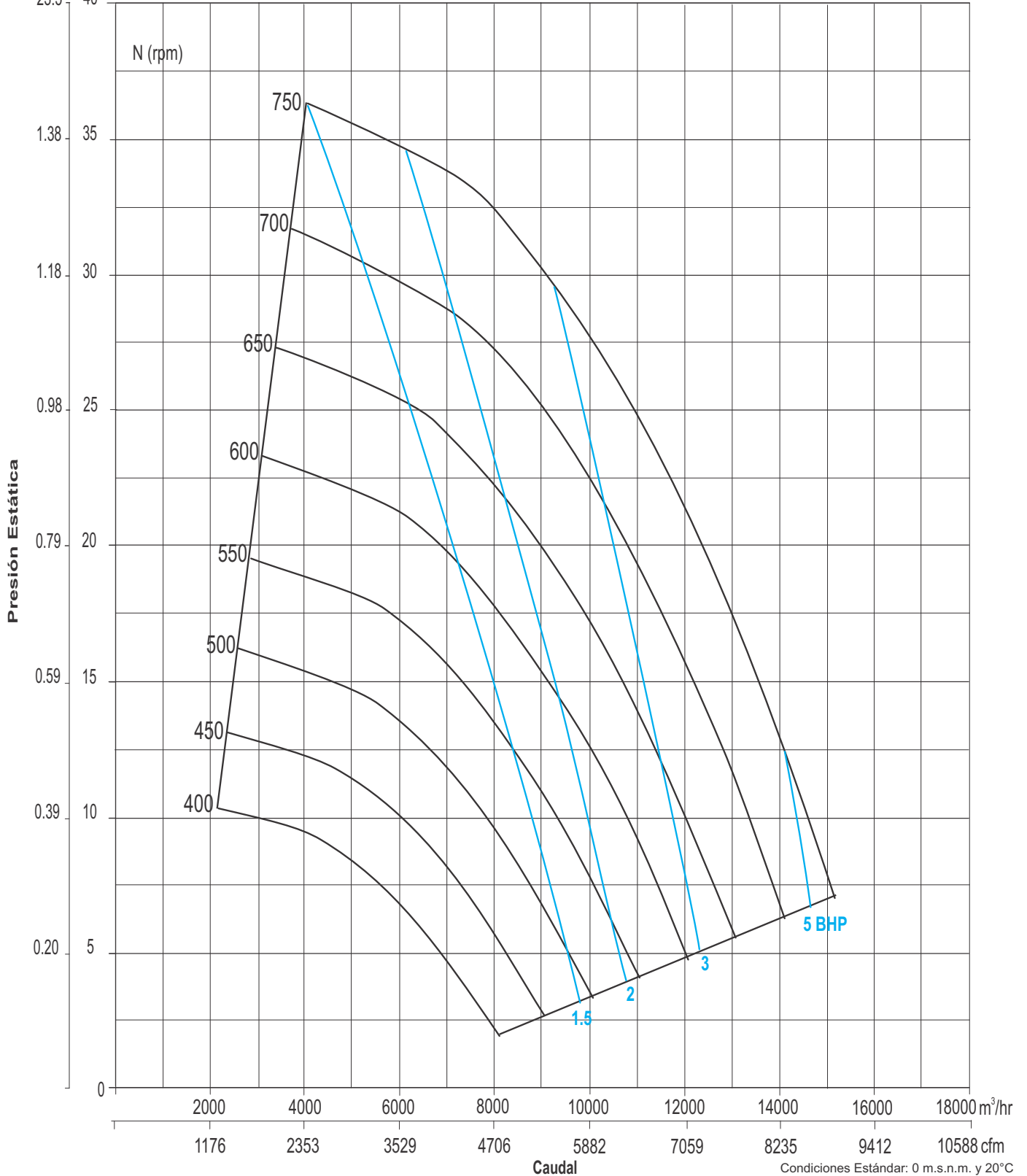
\*Condiciones Estándar: 0 m.s.n.m. y 20°C.



# CCL18/18

## CURVA CARACTERÍSTICA

in wg mmca  
23.5 40



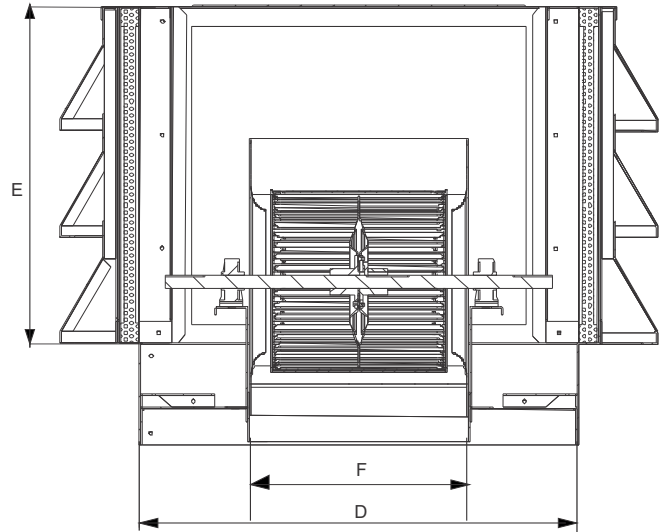
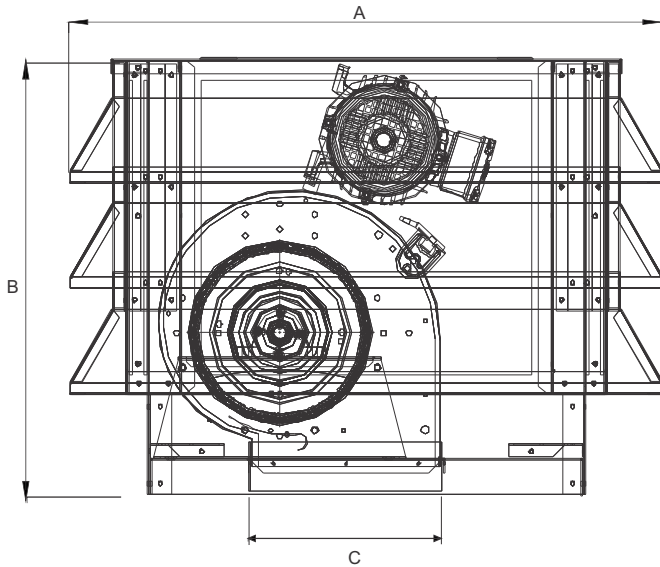


## CAJAS DE VENTILACIÓN CON LOUVER

# CCL

### DIMENSIONES

Modelos del 7/7 al 18/18



Dimensiones en mm.

| MODELO    | A    | B   | C   | D   | E   | F   |
|-----------|------|-----|-----|-----|-----|-----|
| CCL 7/7   | 773  | 558 | 226 | 560 | 411 | 235 |
| CCL 9/9   | 817  | 602 | 266 | 604 | 461 | 303 |
| CCL 10/10 | 875  | 660 | 294 | 662 | 485 | 337 |
| CCL 12/12 | 927  | 718 | 347 | 713 | 511 | 396 |
| CCL 15/15 | 1065 | 841 | 406 | 850 | 599 | 475 |
| CCL 18/18 | 1130 | 904 | 486 | 916 | 611 | 558 |

Dimensiones en in.

| MODELO    | A        | B        | C      | D      | E       | F        |
|-----------|----------|----------|--------|--------|---------|----------|
| CCL 7/7   | 30 7/16  | 21 15/16 | 8 7/8  | 22     | 16 3/16 | 9 1/4    |
| CCL 9/9   | 32 3/16  | 23 11/16 | 10 1/2 | 24     | 18 1/8  | 11 15/16 |
| CCL 10/10 | 34 7/16  | 26       | 11 5/8 | 26     | 19 1/8  | 13 1/4   |
| CCL 12/12 | 36 1/2   | 28 1/4   | 13 5/8 | 28     | 20 1/8  | 15 9/16  |
| CCL 15/15 | 41 15/16 | 33 1/8   | 16     | 33 1/2 | 23 9/16 | 18 11/16 |
| CCL 18/18 | 44 1/2   | 35 9/16  | 19 1/8 | 36     | 24 1/16 | 21 15/16 |

| MODELO    | NÚMERO<br>FILTROS | ESPESOR<br>(IN) | DIMENSIÓN<br>(IN) |
|-----------|-------------------|-----------------|-------------------|
| CCL 7/7   | 4                 | 1               | 20 x 16           |
| CCL 9/9   | 4                 | 1               | 20 x 18           |
| CCL 10/10 | 4                 | 1               | 22 x 19           |
| CCL 12/12 | 4                 | 1               | 22 x 20           |
| CCL 15/15 | 4                 | 1               | 28 x 23           |
| CCL 18/18 | 4                 | 1               | 31 x 24           |

\*Los dibujos e imágenes mostrados en el catálogo son únicamente representativos.



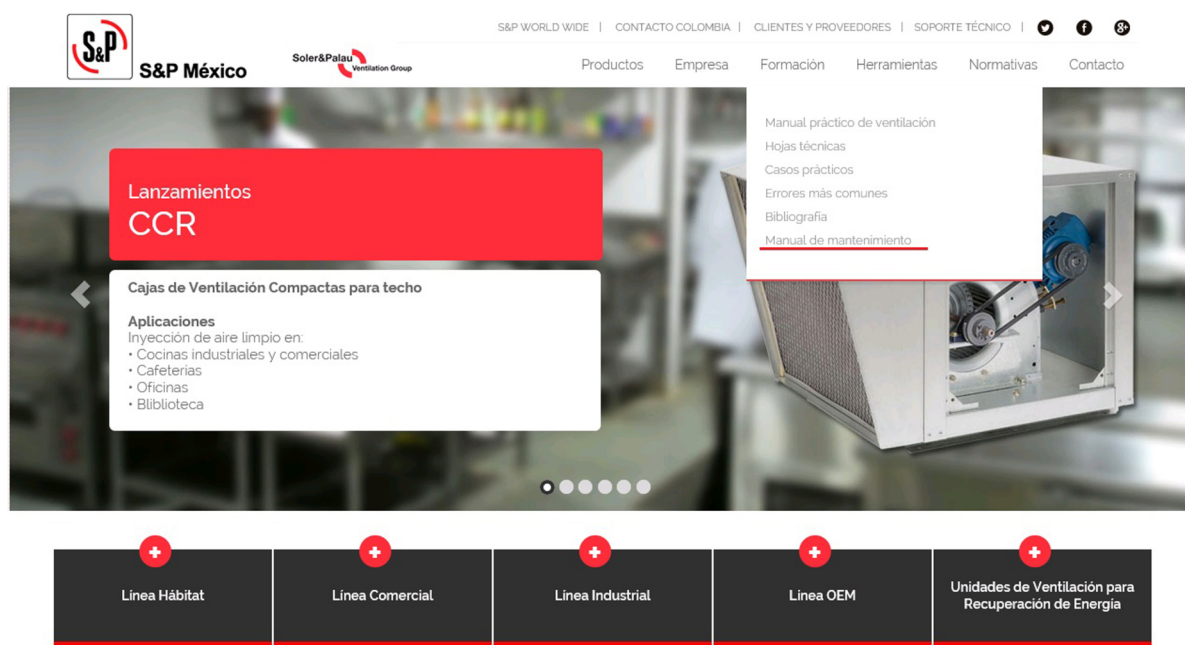
## CAJAS DE VENTILACIÓN COMPACTAS PARA TECHO

# CCL

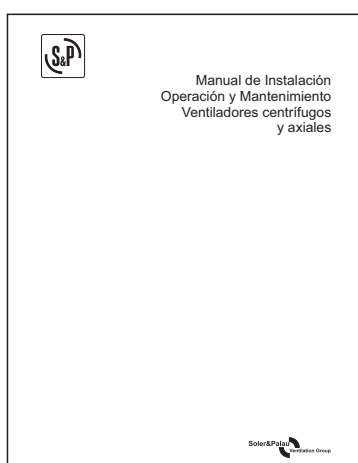
No instalar, operar y dar mantenimiento a los equipos sin leer y entender previamente estas recomendaciones.

Una vez hecha la correcta selección y compra del ventilador basado en su aplicación. Se deben tomar en cuenta ciertos aspectos, para mayor información se recomienda ver el MANUAL DE INSTALACIÓN, OPERACIÓN Y MANTENIMIENTO VENTILADORES CENTRÍFUGOS Y AXIALES.

¿Cómo obtener el MANUAL?  
Ingresa a [www.soler-palau.mx](http://www.soler-palau.mx)



Seleccione de la barra de menús Formación y elija **MANUAL DE MANTENIMIENTO**.





## CAJAS DE VENTILACIÓN COMPACTAS PARA TECHO

# CCL

### ACCESORIOS

#### INTERRUPTOR ELÉCTRICO

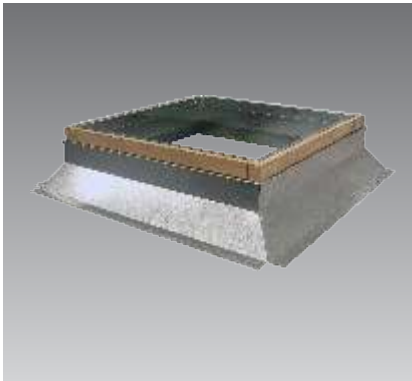


Accesorios de gran alcance, hechos para el control y correcta manipulación de los equipos en la puesta en marcha y paro de los mismos, los cuales permiten un mejor acceso a la conexión, y aumentan la seguridad.

**Características:**

Factor de protección IP 65, material PBT resistente a UV:F1 (UL746C), alambre incandescente 850°C (IEC 60 695-2-12), terminales aisladas, tapa bloqueada en posición ON, terminal de tierra incluida y las terminales de fuerza y tierra cuentan con factor de protección IP 20.

#### ACCESORIO DE MONTAJE PARA TECHO



Este accesorio esta fabricado en lamina galvanizada. Facilita el montaje e instalación de los equipos. Cuenta con dimensiones especificas en cada modelo y su diseño es especial para superficies lisas; para pedidos fuera del estándar comunicarse a planta para la selección del tipo y modelo de accesorio.



**TABLA DE CONVERSIONES**

| CAUDAL              |           |                     | VELOCIDAD             |           |                       | AREA               |                 |                    |
|---------------------|-----------|---------------------|-----------------------|-----------|-----------------------|--------------------|-----------------|--------------------|
| multiplique         | por       | para obtener        | multiplique           | por       | para obtener          | multiplique        | por             | para obtener       |
| CFM                 | 0.0004719 | m <sup>3</sup> /seg | fpm                   | 0.0167    | fps                   | in <sup>2</sup>    | 0.006944        | ft <sup>2</sup>    |
| CFM                 | 0.02832   | m <sup>3</sup> /min | fpm                   | 0.00508   | m/seg                 | in <sup>2</sup>    | 0.0006452       | m <sup>2</sup>     |
| CFM                 | 1.699     | m <sup>3</sup> /hr  | fpm                   | 0.3048    | m/min                 | in <sup>2</sup>    | 645.16          | mm <sup>2</sup>    |
| CFM                 | 0.47195   | l/seg               | fps                   | 60        | fpm                   | ft <sup>2</sup>    | 144             | in <sup>2</sup>    |
| CFM                 | 28.317    | l/min               | fps                   | 0.3048    | m/seg                 | ft <sup>2</sup>    | 0.0929          | m <sup>2</sup>     |
| m <sup>3</sup> /seg | 2118.9    | CFM                 | fps                   | 18.288    | m/min                 | ft <sup>2</sup>    | 92903           | mm <sup>2</sup>    |
| m <sup>3</sup> /seg | 60        | m <sup>3</sup> /min | m/seg                 | 196.85    | fpm                   | m <sup>2</sup>     | 10.76           | ft <sup>2</sup>    |
| m <sup>3</sup> /seg | 3600      | m <sup>3</sup> /hr  | m/seg                 | 3.2808    | fps                   | m <sup>2</sup>     | 1550            | in <sup>2</sup>    |
| m <sup>3</sup> /seg | 1000      | l/seg               | m/seg                 | 60        | m/min                 | m <sup>2</sup>     | 10 <sup>6</sup> | mm <sup>2</sup>    |
| m <sup>3</sup> /seg | 60000     | l/min               | m/min                 | 3.2808    | fpm                   | <b>DENSIDAD</b>    |                 |                    |
| m <sup>3</sup> /min | 35.315    | CFM                 | m/min                 | 0.05468   | fps                   | multiplique        | por             | para obtener       |
| m <sup>3</sup> /min | 0.0167    | m <sup>3</sup> /seg | m/min                 | 0.0167    | m/seg                 | lb/ft <sup>3</sup> | 16.02           | kg/m <sup>3</sup>  |
| m <sup>3</sup> /min | 60        | m <sup>3</sup> /hr  | <b>PRESIÓN</b>        |           |                       | kg/m <sup>3</sup>  | 0.06243         | lb/ft <sup>3</sup> |
| m <sup>3</sup> /min | 16.667    | l/seg               | multiplique           | por       | para obtener          | <b>LONGITUD</b>    |                 |                    |
| m <sup>3</sup> /min | 1000      | l/min               | in c.H <sub>2</sub> O | 0.03607   | psi                   | multiplique        | por             | para obtener       |
| m <sup>3</sup> /hr  | 0.58858   | CFM                 | in c.H <sub>2</sub> O | 0.07343   | in c.Hg               | ft                 | 12              | in                 |
| m <sup>3</sup> /hr  | 0.0167    | m <sup>3</sup> /min | in c.H <sub>2</sub> O | 248.66    | Pa                    | ft                 | 0.3048          | m                  |
| m <sup>3</sup> /hr  | 0.0003    | m <sup>3</sup> /seg | in c.H <sub>2</sub> O | 25.4      | mm c.H <sub>2</sub> O | ft                 | 304.8           | mm                 |
| m <sup>3</sup> /hr  | 0.2778    | l/seg               | in c.H <sub>2</sub> O | 1.8651    | mm c.Hg               | in                 | 0.0833          | ft                 |
| m <sup>3</sup> /hr  | 16.667    | l/min               | in c.H <sub>2</sub> O | 0.002454  | atm                   | in                 | 0.0254          | m                  |
| l/seg               | 2.1189    | CFM                 | in c.Hg               | 0.49115   | psi                   | in                 | 25.4            | mm                 |
| l/seg               | 0.001     | m <sup>3</sup> /seg | in c.Hg               | 13.619    | in c.H <sub>2</sub> O | m                  | 3.2808          | ft                 |
| l/seg               | 0.06      | m <sup>3</sup> /min | in c.Hg               | 3386.4    | Pa                    | m                  | 39.37           | in                 |
| l/seg               | 3.6       | m <sup>3</sup> /hr  | in c.Hg               | 345.91    | mm c.H <sub>2</sub> O | m                  | 1000            | mm                 |
| l/seg               | 60        | l/min               | in c.Hg               | 25.4      | mm c.Hg               | mm                 | 0.003281        | ft                 |
| <b>VOLUMEN</b>      |           |                     | in c.Hg               | 0.03342   | atm                   | mm                 | 0.03937         | in                 |
| multiplique         | por       | para obtener        | Pa                    | 0.000145  | psi                   | mm                 | 0.001           | m                  |
| ft <sup>3</sup>     | 1728      | in <sup>3</sup>     | Pa                    | 0.004022  | in c.H <sub>2</sub> O | <b>PESO</b>        |                 |                    |
| ft <sup>3</sup>     | 28.317    | l                   | Pa                    | 0.0002953 | in c.Hg               | multiplique        | por             | para obtener       |
| ft <sup>3</sup>     | 0.02832   | m <sup>3</sup>      | Pa                    | 0.10215   | mm c.H <sub>2</sub> O | lb                 | 16              | oz                 |
| in <sup>3</sup>     | 0.000579  | ft <sup>3</sup>     | Pa                    | 0.007501  | mm c.Hg               | lb                 | 453.59          | gramos             |
| in <sup>3</sup>     | 0.01639   | l                   | Pa                    | 0.0000099 | atm                   | lb                 | 0.45359         | kg                 |
| in <sup>3</sup>     | 0.0000164 | m <sup>3</sup>      | mm c.H <sub>2</sub> O | 0.00142   | psi                   | kg                 | 2.2046          | lb                 |
| l                   | 0.03531   | ft <sup>3</sup>     | mm c.H <sub>2</sub> O | 0.03937   | in c.H <sub>2</sub> O | kg                 | 35.274          | oz                 |
| l                   | 61.024    | in <sup>3</sup>     | mm c.H <sub>2</sub> O | 0.002891  | in c.Hg               | kg                 | 1000            | gramos             |
| l                   | 0.001     | m <sup>3</sup>      | mm c.H <sub>2</sub> O | 9.7898    | Pa                    | <b>POTENCIA</b>    |                 |                    |
| m <sup>3</sup>      | 35.315    | ft <sup>3</sup>     | mm c.H <sub>2</sub> O | 0.07343   | mm c.Hg               | multiplique        | por             | para obtener       |
| m <sup>3</sup>      | 61024     | in <sup>3</sup>     | mm c.H <sub>2</sub> O | 0.0000966 | atm                   | HP                 | 745.7           | W                  |
| m <sup>3</sup>      | 1000      | l                   | mm c.Hg               | 0.01934   | psi                   | HP                 | 0.7457          | KW                 |
|                     |           |                     | mm c.Hg               | 0.53616   | in c.H <sub>2</sub> O | W                  | 0.00134         | HP                 |
|                     |           |                     | mm c.Hg               | 0.03937   | in c.Hg               | <b>TEMPERATURA</b> |                 |                    |
|                     |           |                     | mm c.Hg               | 133.32    | Pa                    | °F = 9/5 C +32     |                 |                    |
|                     |           |                     | mm c.Hg               | 13.619    | mm c.H <sub>2</sub> O | °C = 5/9 (F-32)    |                 |                    |
|                     |           |                     | mm c.Hg               | 0.001316  | atm                   |                    |                 |                    |





**S&P México**

Blvd. A-15 Apdo. Postal F-23  
Parque Industrial Puebla 2000  
Puebla, Pue, México C.P. 72310  
Tel. 52 (222) 2 233 911, 2 233 900  
Fax. 52 (222) 2 233 914, (800) 2 291 500  
[www.soler-palau.mx](http://www.soler-palau.mx)  
[comercialmx@solerpalau.com](mailto:comercialmx@solerpalau.com)

**SyP Colombia**

Autopista Medellín km 2.7  
Parque Industrial Los Nogales  
Bodega 10  
Cota, Cundinamarca, Colombia  
PBX: (+571 743 8021)  
e-mail: [comercial@solerpalau.com.co](mailto:comercial@solerpalau.com.co)



**ISO 9001: 2008**

SyP México se reserva el  
derecho de modificación sin previo aviso