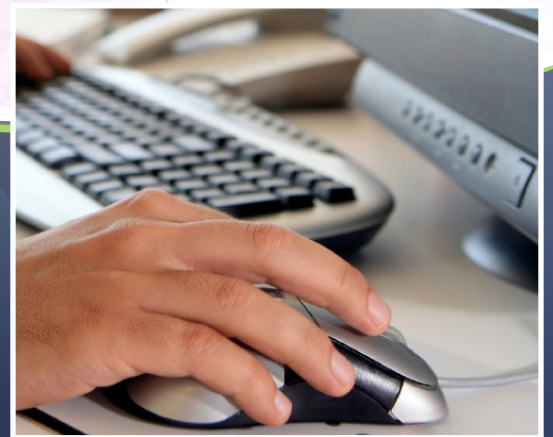
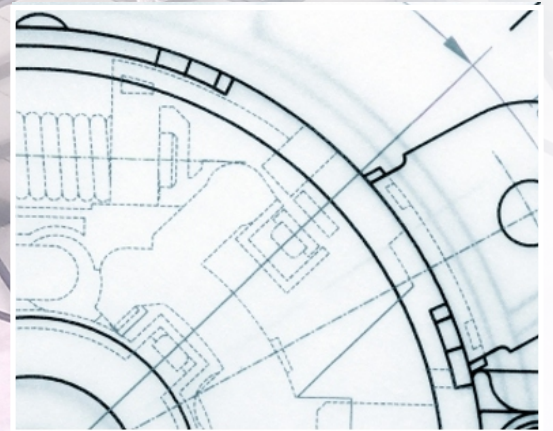
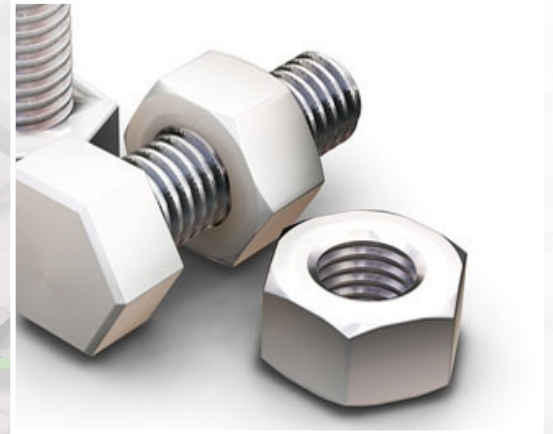


Alite 3

HVLS FANS

A Fan of the Fundamentals
4.7 m (15') | 7.1 m (23')



Design & Engineering

METRIC & IMPERIAL

ENVIRA-NORTH
SYSTEMS LIMITED

1-866-771-7766
bigair@enviranorth.com
www.enviranorth.com



Alite 3 Design & Engineering

Table of Contents

Alite 3 HVLS Fans	Pg.3
The Benefits of Alite 3 HVLS Fans	Pg.3
Installation	Pg.4
Safety Systems	Pg.4
Warranty.....	Pg.4
Fan Components	Pg.5
4.7 m (15') Alite 3 Fan with	Pg.6 & 7
7.1 m (23') Alite 3 Fan with	Pg.8 & 9
Mounting Applications.....	Pg.10
Minimum Blade Clearance.....	Pg.11
UMH Mount Drawing	Pg.12, 13 & 14
Extension Mount.....	Pg.15 & 16
Guy Wire Mounting	Pg.17
Variable Frequency Drive (VFD)	Pg.18
Wire Connections to VFD.....	Pg.19
Safety & Installation.....	Pg.20
Fan Packaging Specifications.....	Pg.21

**Please note that this engineering and design guide is subject to change without notice.

Alite 3 HVLS Fans

Alite 3 HVLS fans blanket a very large area by constantly moving air to create an expansive comfort zone. As a result, the big ceiling fan can create an evaporative cooling effect of three to four degrees Celsius throughout the facility.

During the heating season, the Alite 3 HVLS fan technology can de-stratify uneven temperatures that can be in excess of fifteen degrees Celsius from ceiling to floor. This results in significant energy savings since the heating system cycles less frequently.



The Benefits of Alite 3 HVLS Fans

- Quiet speed and efficient operation, no annoying high speed circulating and exhaust fans.
- Virtually maintenance free (recommended inspection every 20,000 hours).
- Inexpensive to operate.
- Greatly reduces “recovery” time when overhead doors are open with a constant air flow throughout the space.
- Provides a constant, even temperature from floor to ceiling and wall to wall.
- Will minimize the need for expensive duct work in new construction for both heating and air conditioning systems.
- A comfortable workplace environment increases productivity and decreases absenteeism.

Alite 3 Design & Engineering

Installation

Alite 3 HVLS Fans come as a complete system including power unit, mounting hardware, wiring kit (optional) and low voltage controller (optional). Having everything included in this complete package streamlines installation and eliminates the costly search for components and hardware.

Safety Systems

All Alite 3 HVLS Fans are supplied with superior safety equipment and harnessing systems to maintain an integral safety status and give the customer peace of mind. All fan installations include safety cables, guy wires, safety rings, thermal protection on motor to prevent overheating. If fans are installed between racks in storage facility, signs should be posted identifying locations. The variable frequency drive also comes equipped with a current limit, motor overload sensor, minimum and maximum speed control.

Warranty

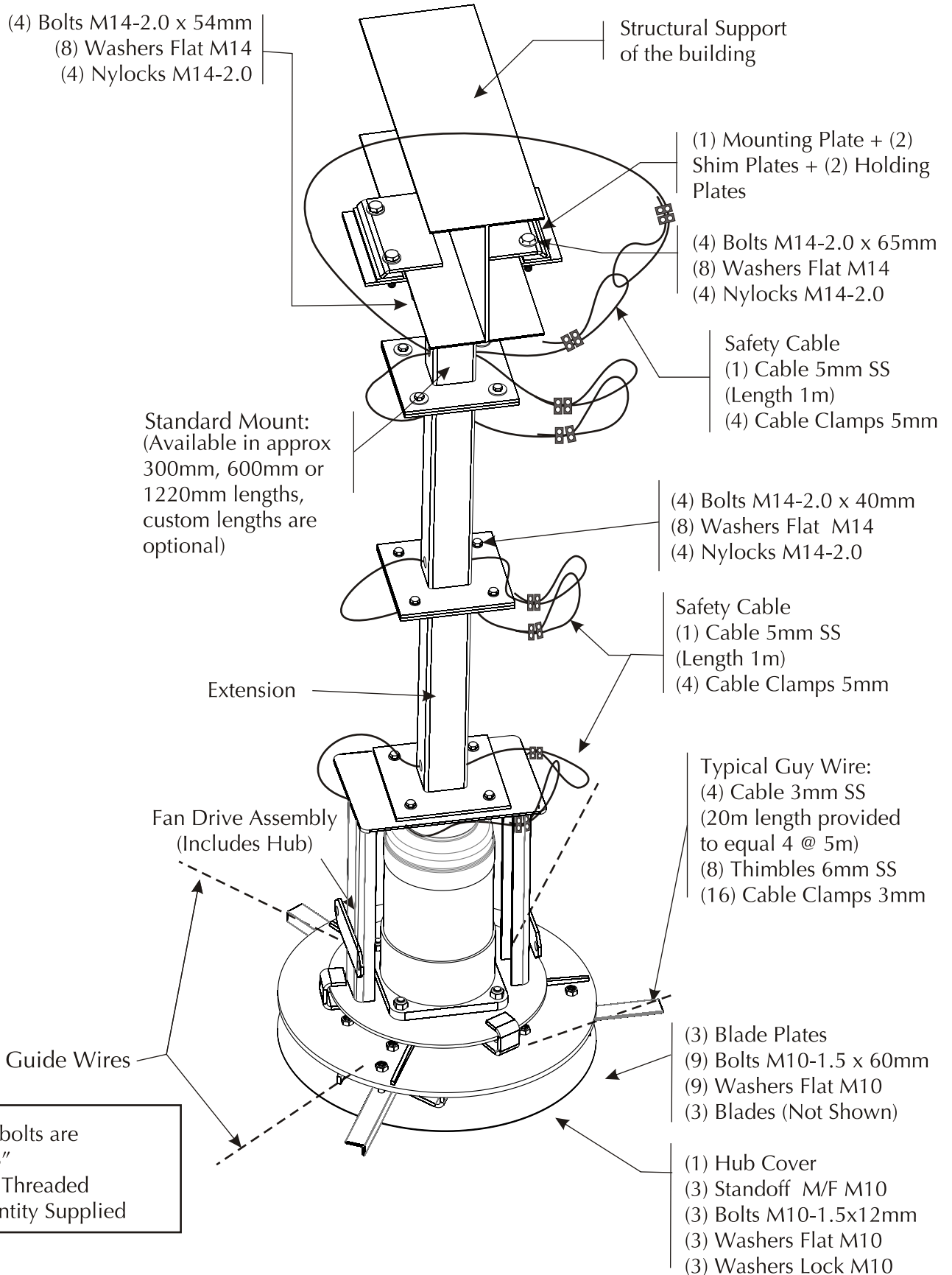
Alite 3 fans are of industrial grade construction and should provide many years of virtually maintenance free use. Warranty duration is as follows:

Air Foil Shaped Blade	1 Year Limited Warranty
Steel Hub	1 Year Limited Warranty
Gear Motor	1 Year Limited Warranty
VFD Control Panel	1 Year Limited Warranty

Please see the Alite 3 HVLS Fan Installation Guide for complete warranty information including specifics and warranty exclusions. Use the above warranty information as a general guideline only.

Alite 3 Design & Engineering

Fan Components



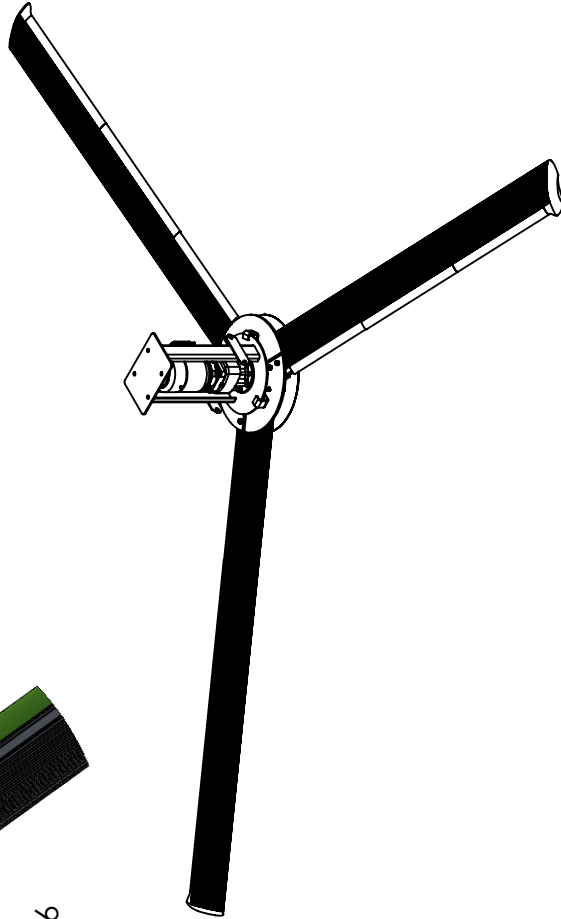
Note: All bolts are "Class 8.8"
 FT= Fully Threaded
 (#) = Quantity Supplied



UNDERSIDE SHOWING HUB COVER

SCALE: 1:16

UNDERSIDE SHOWING HUB COVER REMOVED



SCALE: 1:16

ITEM NO.	PART NUMBER	DESCRIPTION	QTY.
1	EN780X1174	ALITE 3 FAN DRIVE UNIT (NA)	1
2	EN785X5910	ALITE 3 FAN - BLADE SET 4.7m GREEN(3 per SET)	1

Q:\01_Envira-North\SolidWorks (Projects)\EastRock-20120309\ALITE 3 FAN\ALITE 3 2010 ONLY\EN780X0166

MATERIAL AS SPECIFIED		DRAWN BM		Drawing Date: 07/11/2014		Envira-North Systems Ltd.	
FINISH AS SPECIFIED		Checked By:		Checked Date:		TITLE: ALITE 3 FAN 4.7m (15.3ft), 0.75kW IE2 (NA)	
VENDORS NUMBER:		Last Revised Date: 18/01/2016		Last Saved Date: Friday, November 16, 2018 12:43:09 PM		SIZE DWG. NO. REV	
DO NOT SCALE DRAWING		UNLESS OTHERWISE SPECIFIED: DIMENSIONS ARE IN INCHES TOLEANCES: FRACTIONAL: 1/16 ANGULAR: MACH: 0.1° BEND ± 0.5° TWO PLACE DECIMAL ± 0.060(1.5mm) THREE PLACE DECIMAL ± 0.030(0.76mm)		REVISIONS:		A EN780X0166 3	
<p>PROPRIETARY AND CONFIDENTIAL</p> <p>THE INFORMATION CONTAINED IN THIS DRAWING IS THE SOLE PROPERTY OF ENVIRA-NORTH SYSTEMS LTD. ANY REPRODUCTION IN PART OR AS A WHOLE WITHOUT THE WRITTEN PERMISSION OF ENVIRA-NORTH SYSTEMS LTD IS PROHIBITED. SHOULD THERE BE ANY DISCREPANCIES WITH THIS CONSTRUCTION DRAWING, ENVIRA-NORTH SYSTEMS LTD SHOULD BE CONTACTED IMMEDIATELY FOR RESPONSE.</p>		<p>Note: Contractor is responsible for verifying all site conditions to include field measurements and making any necessary changes without notifying Envira-North Systems Ltd. the contractor is responsible for the same. All drawings are to be used as general architectural intent only unless otherwise stamped. See Engineering drawings for structural design information. Contractor to ensure that all authorities are informed in regard to the work and that all permits are obtained before commencing the work.</p>		SCALE: 1:32 WEIGHT: 168 lbs		SHEET 1 OF 2	

Alite 3 Design & Engineering

4.7m (15') Alite 3 Fan

EN780X0066

General

Model Number	EN780X0066
Diameter	4.7 m (15')
Number of Blades	3
Motor Power	0.75 kW (1 Hp)
Noise Level	62 dBA
Weight (no mount)	79 kgs (168 lbs)*
Packaged Fan (EN780X1074) - 60 cm x 60 cm x 73 cm	71 kgs (157 lbs)
Packaged Blades (EN780X2016) - 28 cm x 13 cm x 253 cm	41 kgs (90 lbs)

* Mounts, extensions & controls packages separately. Weights may vary.

Performance (at max speed)

Airflow	52,662 CFM
Maximum Speed	68 rpm
Power Usage	368 W
Maximum Effective Diameter	18.3 m (60')

Construction

Frame	914 mm Gage Steel / Galvanized
Hub	9.7mm Zinc Plated Steel
Blades	6063 Extruded Anodized Aluminum
Blade Leading Edge	Plastic Extrusion
Blade End Caps	Plastic Extrusion
Blade Leading Edge Colour	Pantone Green

Safety Components

Safety Cables	5 mm Stainless Steel
Guy Wires	3 mm Stainless Steel
Safety Clips	6 mm Galvanized Steel

Mounting Hardware

Standard Mount	Universal I-Beam Clamp w/ Swivel
Drop Extensions (Optional)	600 mm (2') / 1220 mm (4')

Mounting*

Open Web Steel Joist (Optional)	Steel Beam With Brackets
Wood Beam Mount (Optional)	Steel Machined Mount Plates
Concrete Beam Mount (Optional)	Steel Beam with Matching Mount Plates
Purlin "Z" Mount (Optional)	Steel Beam Brackets
Steel Thickness Varies Depending on Beam Span	Consult Factory for Specifics

*Please see Alite 3 Installation Manual for more information regarding mounting hardware.

Gear Motor

Type	Helical Inline Reducer
HP	0.75 kW (1Hp) - 50 Hz / 60 Hz
Ratio	25.85
Volts	230 V / 460 V
Amps Consumed	1.6 A @ 230 V
Insulation Class	F
Torque	112 Nm (988lb.in.)

Fan Control

Enclosure	IP65
Operation	Key Pad
Control Options (Not Included)	Low Voltage / Temperature Control
Standard Power	208 V / 230 V / 400 V / 460 V
Special Wiring (Thermostats, Fire Alarm Interface, Networking Etc.)(Optional)	Consult Factory
50 / 60 Hz Operation	

Warranty*

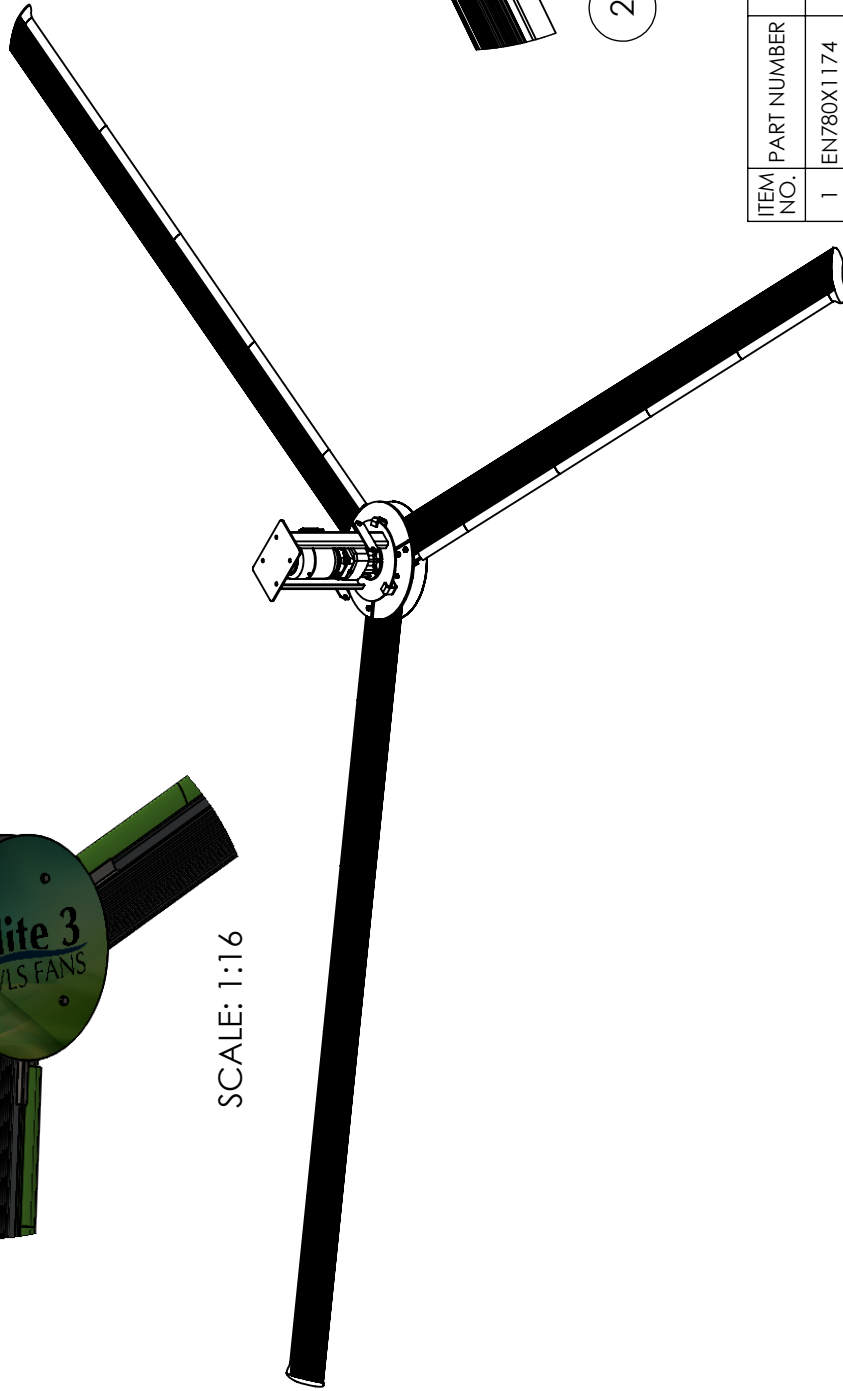
Motor & Gearbox	1 Year
Blades, Hub & Mounting System	1 Year

*Please see Alite 3 Installation Manual for warranty specifications and exclusions.

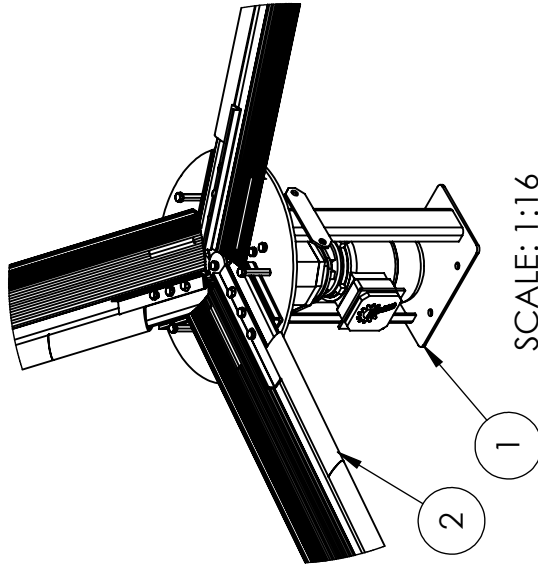
UNDERSIDE SHOWING
HUB COVER



SCALE: 1:16



UNDERSIDE SHOWING
HUB COVER REMOVED



SCALE: 1:16

ITEM NO.	PART NUMBER	DESCRIPTION	QTY
1	EN780X1174	ALITE 3 FAN DRIVE UNIT (NA)	1
2	EN785X5816	ALITE 3 FAN - BLADE SET 7.1m GREEN(3 per SET)	1

Q:\01_Envira-North\SolidWorks (Projects)\EastRock-20120309\ALITE 3 FAN\ALITE 3 2010 ONLY\EN780X0174

MATERIAL	AS SPECIFIED	DRAWN	BM	Drawing Date:	11/14/2013	Envira-North Systems Ltd.	
FINISH	AS SPECIFIED	Checked By:	CDV	Checked Date:	12/31/2013	TITLE:	
VENDORS NUMBER:		Last Revised Date:	18/01/2016	Last Saved Date:	Thursday, November 15, 2018 4:59:00 PM	ALITE 3 FAN 7.1m (23.3ft), 0.75kW IE2 (NA)	
DO NOT SCALE DRAWING		UNLESS OTHERWISE SPECIFIED: DIMENSIONS ARE IN INCHES TOLERANCES: FRACTIONAL: 1/16 ANGULAR: MACH: 0.1° BEND ± 0.5° TWO PLACE DECIMAL ± 0.060(1.5mm) THREE PLACE DECIMAL ± 0.030(0.76mm)		REVISIONS:		SIZE	DWG. NO.
PROPRIETARY AND CONFIDENTIAL		UNLESS OTHERWISE SPECIFIED: DIMENSIONS ARE IN INCHES TOLERANCES: FRACTIONAL: 1/16 ANGULAR: MACH: 0.1° BEND ± 0.5° TWO PLACE DECIMAL ± 0.060(1.5mm) THREE PLACE DECIMAL ± 0.030(0.76mm)		1-new (NA) drawing, 2- Add sheet with overall dimensions, update to current standards, 3- convert to smooth plastic leading edge blade		A	EN780X0174
THE INFORMATION CONTAINED IN THIS DRAWING IS THE SOLE PROPERTY OF ENVIRA-NORTH SYSTEMS LTD. ANY REPRODUCTION IN PART OR AS A WHOLE WITHOUT THE WRITTEN PERMISSION OF ENVIRA-NORTH SYSTEMS LTD IS PROHIBITED. SHOULD THERE BE ANY DISCREPANCIES WITH THIS CONSTRUCTION DRAWING, ENVIRA-NORTH SYSTEMS LTD SHOULD BE CONTACTED IMMEDIATELY FOR RESPONSE.		UNLESS OTHERWISE SPECIFIED: DIMENSIONS ARE IN INCHES TOLERANCES: FRACTIONAL: 1/16 ANGULAR: MACH: 0.1° BEND ± 0.5° TWO PLACE DECIMAL ± 0.060(1.5mm) THREE PLACE DECIMAL ± 0.030(0.76mm)		1-new (NA) drawing, 2- Add sheet with overall dimensions, update to current standards, 3- convert to smooth plastic leading edge blade		SCALE: 1:32	WEIGHT: 200 lbs
							SHEET 1 OF 2

Alite 3 Design & Engineering

7.1 m (23') Alite 3 Fan

EN780X0074

General

Model Number	EN780X0074
Diameter	7.1 m (23')
Number of Blades	3
Motor Power	0.75 kW (1 Hp)
Noise Level	57 dBA
Weight (no mount)	90 kgs* (199 lbs)
Packaged Fan (EN780X1074) - 60 cm x 60 cm x 73 cm	71 kgs (157 lbs)
Packaged Blades (EN780X2024) - 28 cm x 13 cm x 375 cm	55 kgs (120 lbs)

* Mounts, extensions & controls packaged separately. Weights may vary.

Performance (at max speed)

Airflow	177,184 CFM
Maximum Speed	57 rpm
Power Usage	621 W
Maximum Effective Diameter	42.7 m (140')

Construction

Frame	914 mm Gage Steel / Galvanized
Hub	9.7mm Zinc Plated Steel
Blades	6063 Extruded Anodized Aluminum
Blade Leading Edge	Plastic Extrusion
Blade End Caps	Plastic Extrusion
Blade Leading Edge Colour	Pantone Green

Safety Components

Safety Cables	5 mm Stainless Steel
Guy Wires	3 mm Stainless Steel
Safety Clips	6 mm Galvanized Steel

Mounting Hardware

Standard Mount	Universal I-Beam Clamp w/ Swivel
Drop Extensions (Optional)	600 mm (2') / 1220 mm (4')

Mounting*

Open Web Steel Joist (Optional)	Steel Beam With Brackets
Wood Beam Mount (Optional)	Steel Machined Mount Plates
Concrete Beam Mount (Optional)	Steel Beam with Matching Mount Plates
Purlin "Z" Mount (Optional)	Steel Beam Brackets
Steel Thickness Varies Depending on Beam Span	Consult Factory for Specifics

*Please see Alite 3 Installation Manual for more information regarding mounting hardware.

Gear Motor

Type	Helical Inline Reducer
HP	0.75 kW (1Hp) - 50 Hz / 60 Hz
Ratio	25.85
Volts	230 V / 460 V
Amps Consumed	2.7A @ 230 V
Insulation Class	F
Torque	112 Nm (988lb.in.)

Fan Control

Enclosure	IP65
Operation	Key Pad
Control Options (Not Included)	Low Voltage / Temperature Control
Standard Power	208 V / 230 V / 400 V / 460 V
Special Wiring (Thermostats, Fire Alarm Interface, Networking Etc.)(Optional)	Consult Factory
50 / 60 Hz Operation	

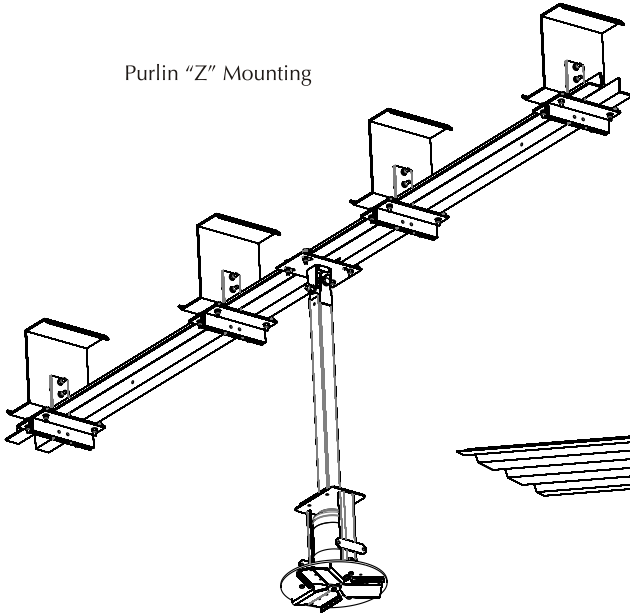
Warranty*

Motor & Gearbox	1 Year
Blades, Hub & Mounting System	1 Year

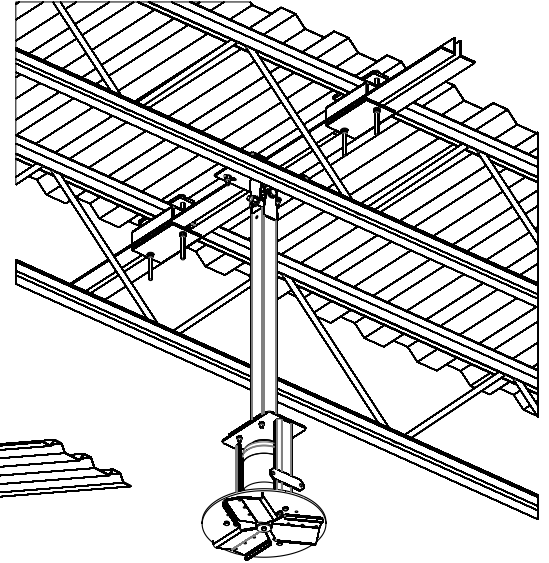
*Please see Altra-Air Installation Manual for warranty specifications and exclusions.

Different Mounting Applications

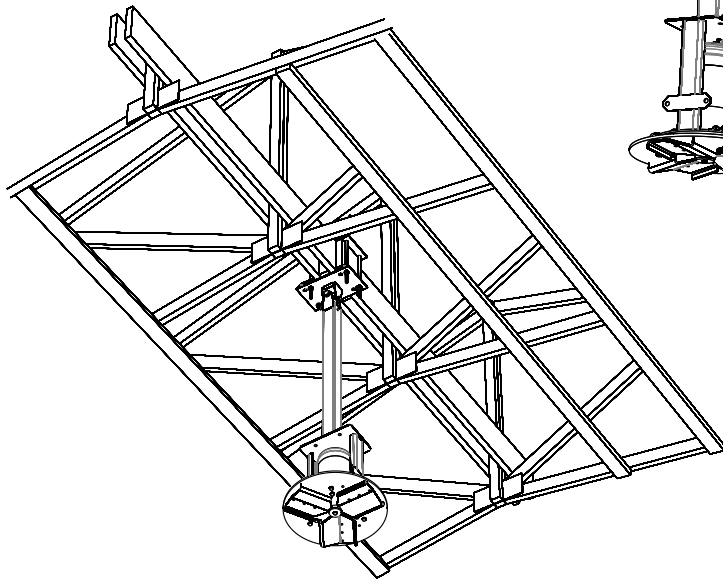
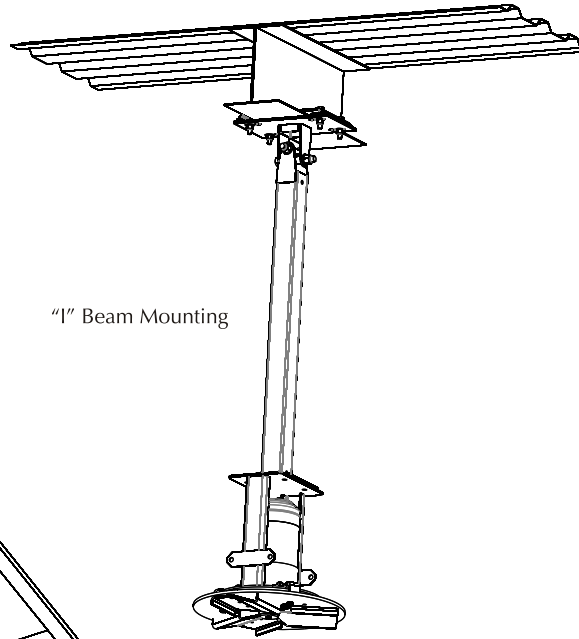
Purlin "Z" Mounting



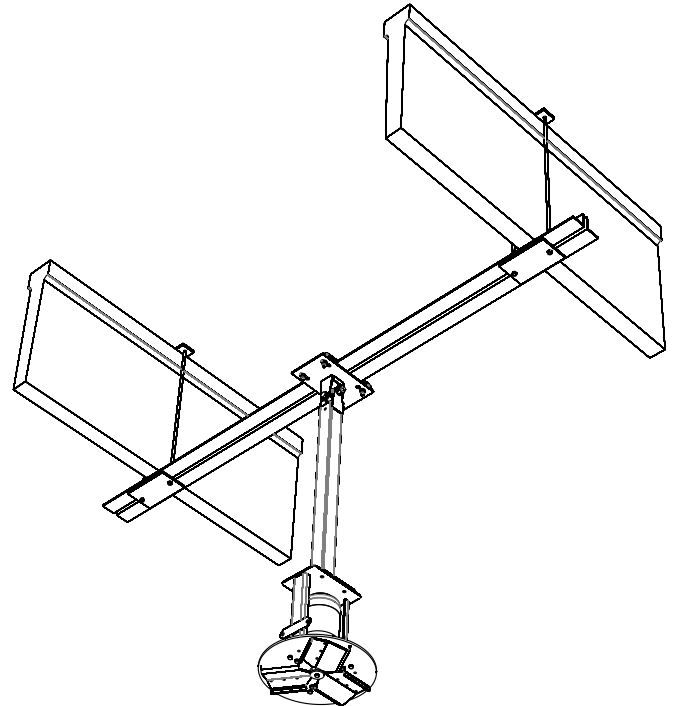
"OWSJ" Mounting



"I" Beam Mounting



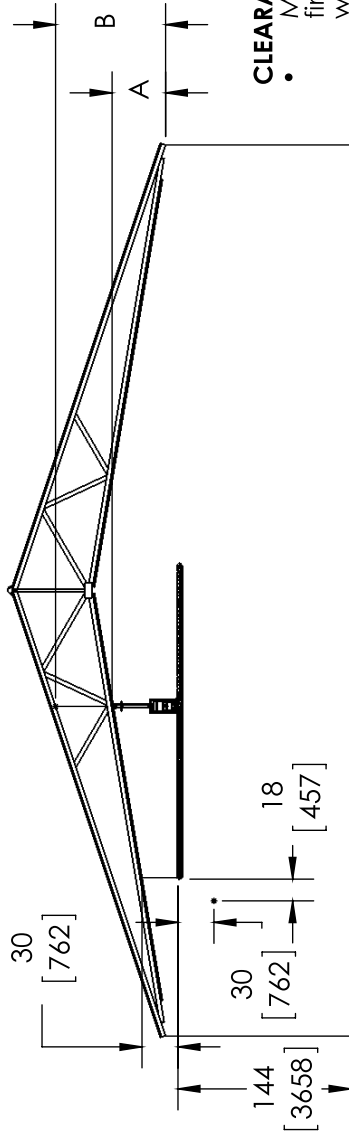
"Wood" Beam Mounting



"Concrete" Beam Mounting

Fan Blade Clearance

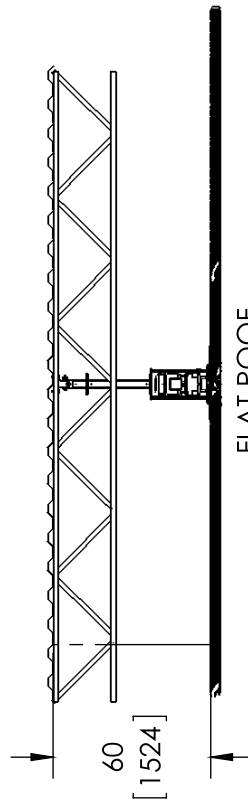
OPEN CEILING, USE
DIMENSION A, MINIMUM 60 [1524]
FINISHED TRUSS CEILING, USE
DIMENSION B, MINIMUM 48 [1220].



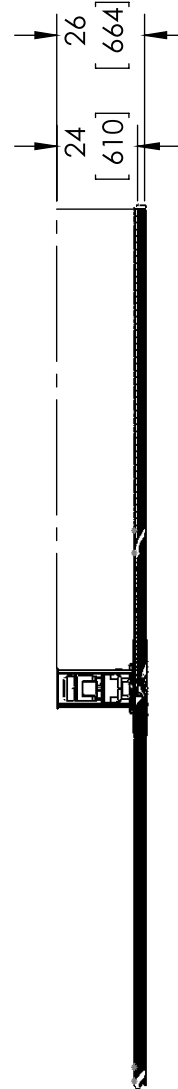
CLEARANCES:

- Min 60" [1524] center of fan to roof deck or to finished ceiling for ideal operating performance without comprising overall fan performance
- Min 30" [762] from fan blade's leading edge to obstruction above or below fan.
- Min 18" [457] from side of fan to any obstruction
- Min floor to fan leading edge height 144" [3658]
- To determine correct length for drop:
 - establish method to mount the fan
 - determine necessary clearances
 - add clearance to distance required to mount location
 - select from standard UMH mounts' lengths available

SLOPED ROOF



FLAT ROOF



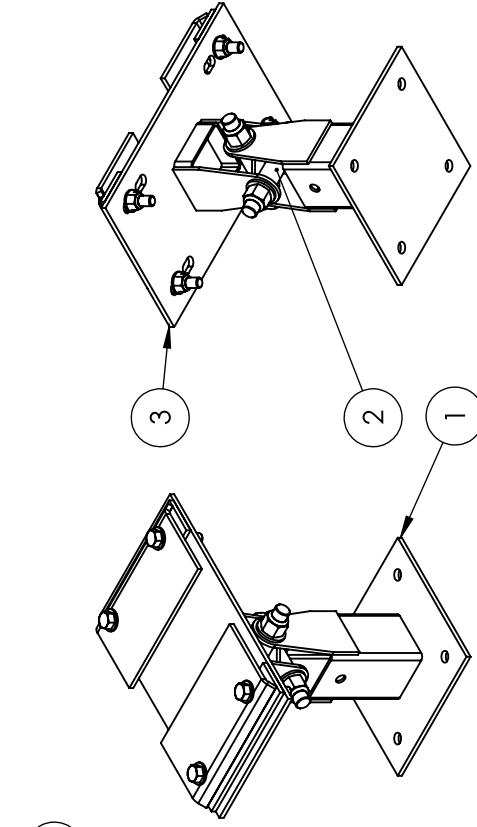
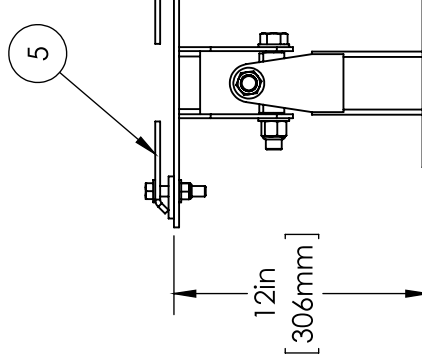
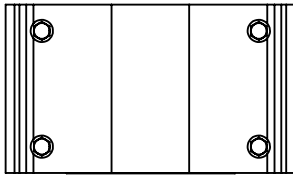
FAN FRAME DETAIL

NOTE: All dimensions are minimum requirements
Dimensions are in inches, metric dimensions [mm].

MATERIAL	DRAWN: MITCHELL BEERMAN Drawing Date: 9/27/2011		TITLE: MINIMUM CLEARANCES	
FINISH	Q.A.	Checked By: CDV	SIZE DWG. NO. REV	
VENDORS NUMBER:	Last Revised Date:	Checked Date: 09/27/2011	A CONSTRAINTS	
DO NOT SCALE DRAWING PROPRIETARY AND CONFIDENTIAL	ENG APPR.	MFG APPR.	SCALE: N.T.S. WEIGHT: 1	
	UNLESS OTHERWISE SPECIFIED: DIMENSIONS ARE IN INCHES TOLERANCES: 1/16 ANGULAR: MACHS 0.1° BEND ± 0.5° TWO PLACE DECIMAL ± 0.060 THREE PLACE DECIMAL ± 0.030	Last Saved Date: Tuesday, September 27, 2011 3:19:11 PM	ADJUSTED MIN REQUIREMENTS	
	COMMENTS: MINIMUM DIMENSIONS FOR CLEARANCE	REVISIONS:	2	
		ADJUSTED MIN REQUIREMENTS	3	
			4	
			5	

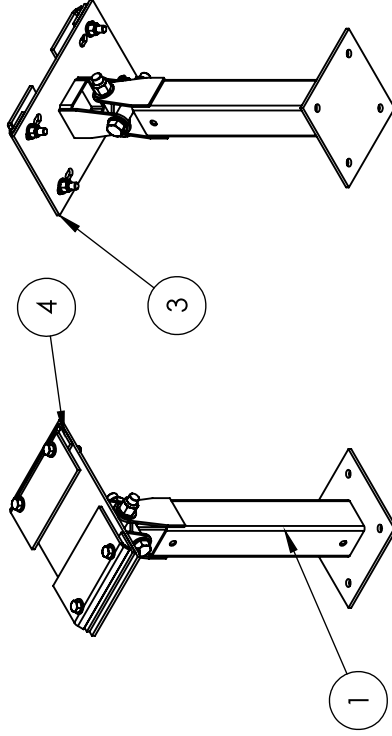
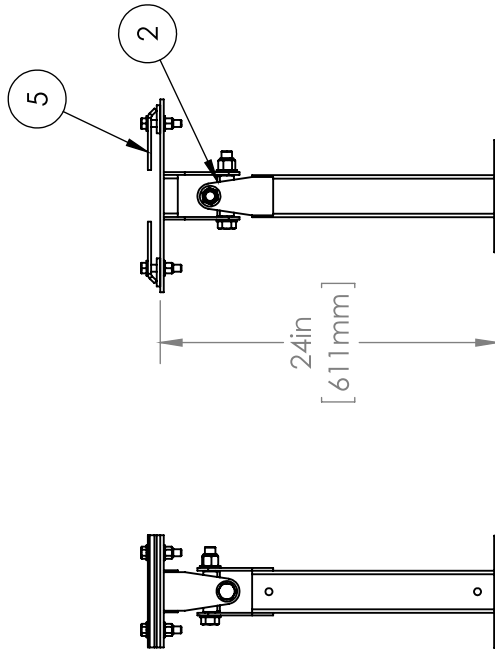
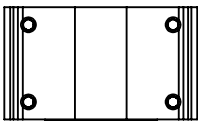
ITEM NO.	PART NUMBER	DESCRIPTION	QTY.
1	EN823X8425	DROP H TYPE 1 FT	1
2	EN823X8418	UMH COUPLER PC	1
3	EN823X8417	UMH UPPER PIVOT PLATE	1
4	EN823X8401	MANUFACTURED I-BEAM SPACER	2
5	EN823X8402	MANUFACTURED I-BEAM CLAMP	2

SUBJECT TO CHANGE WITHOUT NOTICE



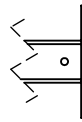
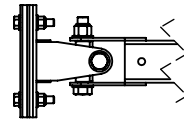
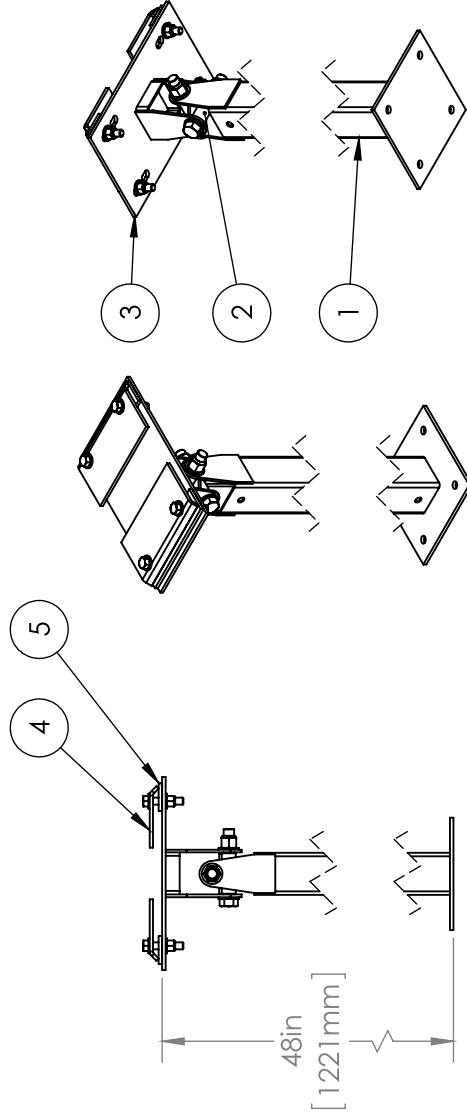
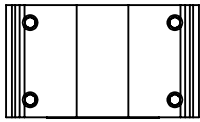
MATERIAL AS SPECIFIED	COMMENTS: PART #'S MAY VARY DEPENDING ON METRIC OR IMPERIAL HARDWARE REQUIREMENTS	DRAWN G.A.	CEO	Drawing Date: 6/16/2011	TITLE: 1 FT UMH MOUNT	
FINISH AS SPECIFIED	REVISIONS:	Last Revised Date:	Checked By: CDV	Checked Date: 6/16/2011		
VENDOR NUMBER:		ENG APPR.	ENG APPR. Date:	MFG APPR.		
DO NOT SCALE DRAWING PROPRIETARY AND CONFIDENTIAL		UNLESS OTHERWISE SPECIFIED: DIMENSIONS ARE IN INCHES TOLERANCES: FRACTIONAL ± ANGULAR: MACH ± BEND ± TWO PLACE DECIMAL ± THREE PLACE DECIMAL ±				
		Last Saved Date: Wednesday, October 19, 2011 10:09:50 AM				
				SCALE: 1:2	WEIGHT: 24.88	
					SIZE A EN680X3003	DWG. NO. REV

ITEM NO.	PART NUMBER	DESCRIPTION	QTY.
1	EN823X8426	DROP H TYPE 2 FT	1
2	EN823X8418	UMH COUPLER PC	1
3	EN823X8417	UMH UPPER PIVOT PLATE	1
4	EN823X8401	MANUFACTURED I-BEAM SPACER	2
5	EN823X8402	MANUFACTURED I-BEAM CLAMP	2



MATERIAL	AS SPECIFIED	COMMENTS:	DRAWN	CEO	Drawing Date: 6/16/2011	SUBJECT TO CHANGE WITHOUT NOTICE	
FINISH	AS SPECIFIED	PART #'S MAY VARY DEPENDING ON METRIC OR IMPERIAL HARDWARE REQUIREMENTS	Q.A.		Checked By: CDV	TITLE: 2 FT UMH MOUNT	
VENDOR'S NUMBER:		REVISIONS:	ENG APPR.		Checked Date: 6/16/2011	SIZE DWG. NO. REV.	
DO NOT SCALE DRAWING			ENG APPR. Date:		MFG APPR.	A EN680X3006	
PROPRIETARY AND CONFIDENTIAL			UNLESS OTHERWISE SPECIFIED: DIMENSIONS ARE IN INCHES TOLERANCES: FRACTIONAL ± ANGULAR: MACH ± BEND ± TWO PLACE DECIMAL ± THREE PLACE DECIMAL ±		Last Saved Date: Wednesday, October 19, 2011 12:33:24 PM	SCALE: 1:2 WEIGHT: 29.65	
						1	2
						3	4
						5	1

ITEM NO.	PART NUMBER	DESCRIPTION	QTY.
1	EN823X8428	DROP H TYPE 4 FT	1
2	EN823X8418	UMH COUPLER PC	1
3	EN823X8417	UMH UPPER PIVOT PLATE	1
4	EN823X8402	MANUFACTURED I-BEAM CLAMP	2
5	EN823X8401	MANUFACTURED I-BEAM SPACER	2

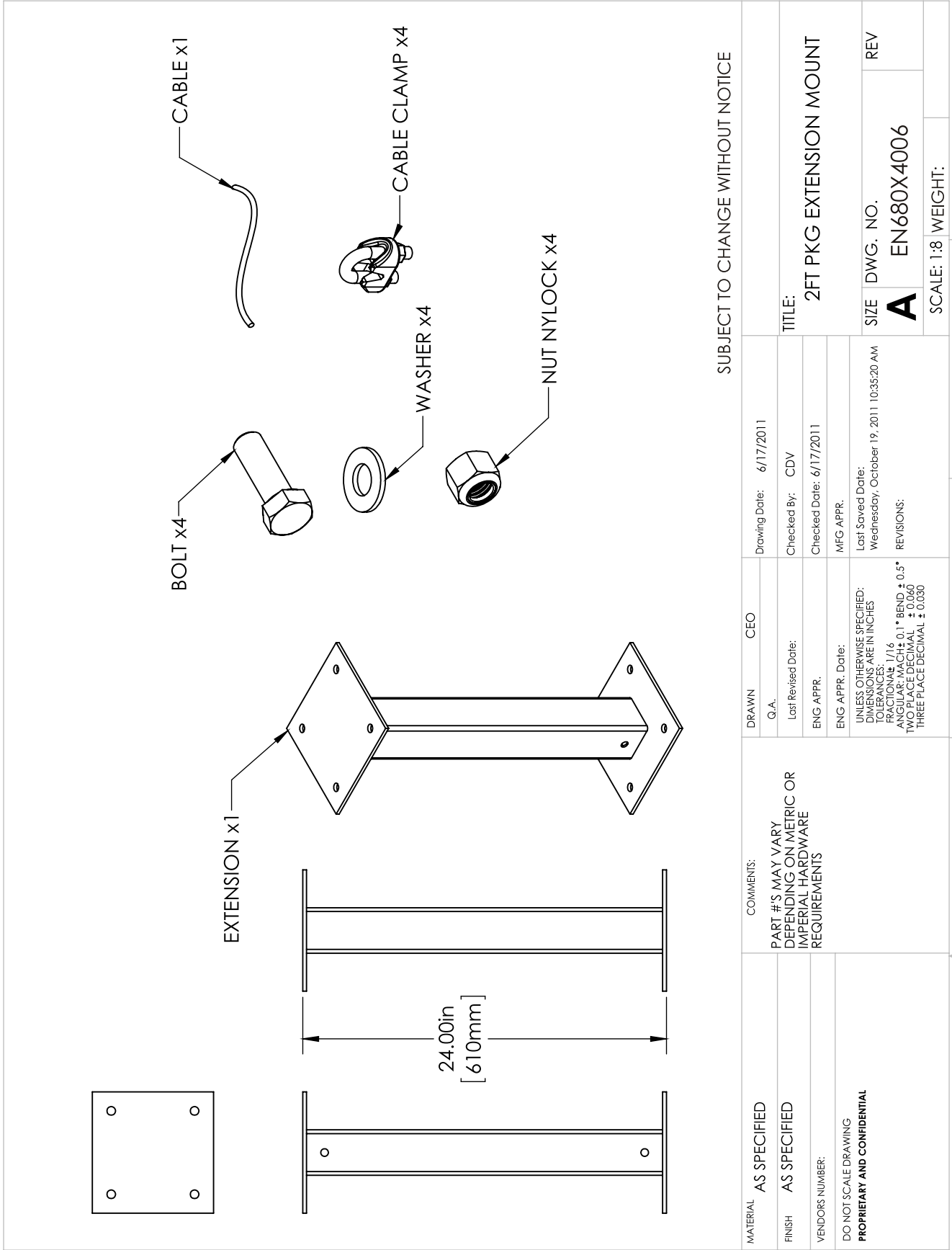


SUBJECT TO CHANGE WITHOUT NOTICE

MATERIAL AS SPECIFIED	DRAWN Q.A.	CEO	Drawing Date: 6/16/2011
FINISH AS SPECIFIED	Last Revised Date:	Checked By: CDV	
VENDOR'S NUMBER:	ENG APPR.	Checked Date: 6/16/2011	
DO NOT SCALE DRAWING PROPRIETARY AND CONFIDENTIAL	ENG APPR. Date:	MFG APPR.	
	UNLESS OTHERWISE SPECIFIED: DIMENSIONS ARE IN INCHES TOLERANCES: FRACTIONAL: MACH+ BEND ± ANGULAR: MACH+ BEND ± TWO PLACE DECIMAL ± THREE PLACE DECIMAL ±		
	Last Saved Date: Wednesday, October 19, 2011 12:33:20 PM		REV.
	SIZE	DWG. NO.	
	A	EN680X3012	
	SCALE: 1:2	WEIGHT: 39.22	

5	4	3	2	1
---	---	---	---	---

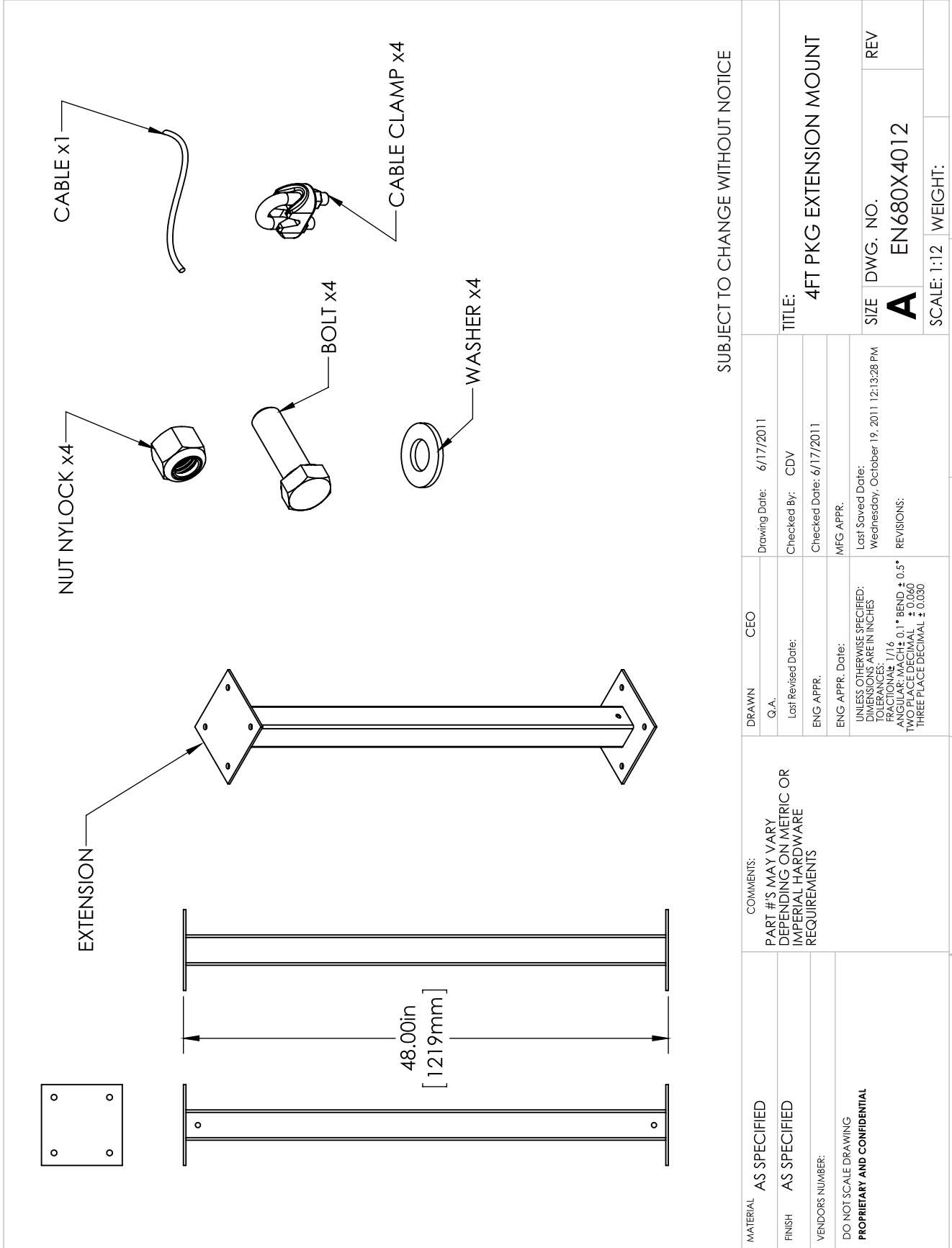
Alite 3 Design & Engineering



SUBJECT TO CHANGE WITHOUT NOTICE

MATERIAL	AS SPECIFIED	DRAWN	CEO	Drawing Date:	6/17/2011
FINISH	AS SPECIFIED	Q.A.		Checked By:	CDV
VENDOR'S NUMBER:		ENG APPR.		Checked Date:	6/17/2011
DO NOT SCALE DRAWING PROPRIETARY AND CONFIDENTIAL		ENG APPR. Date:		MFG APPR.	
	COMMENTS: PART #'S MAY VARY DEPENDING ON METRIC OR IMPERIAL HARDWARE REQUIREMENTS	UNLESS OTHERWISE SPECIFIED: DIMENSIONS ARE IN INCHES FRACTIONS: 1/16 ANGULAR: MACH ± 0.1° BEND ± 0.5° TWO PLACE DECIMAL ± 0.040 THREE PLACE DECIMAL ± 0.030			
		Last Saved Date: Wednesday, October 19, 2011 10:35:20 AM			
		REVISONS:			
		SIZE	DWG. NO.	REV.	
		A	EN680X4006		
		SCALE: 1:8 WEIGHT:			
		5	4	3	2
					1

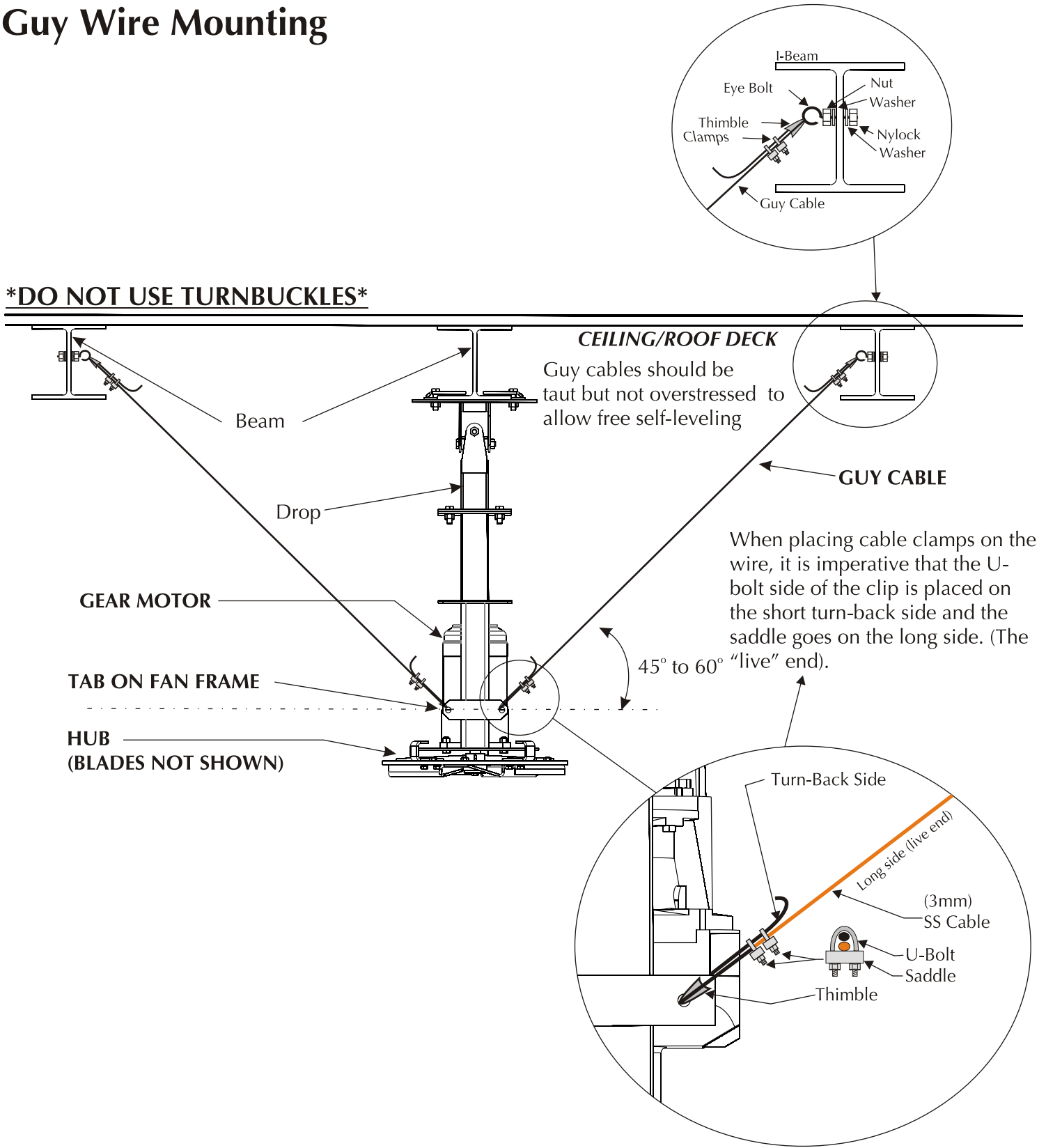
Alite 3 Design & Engineering



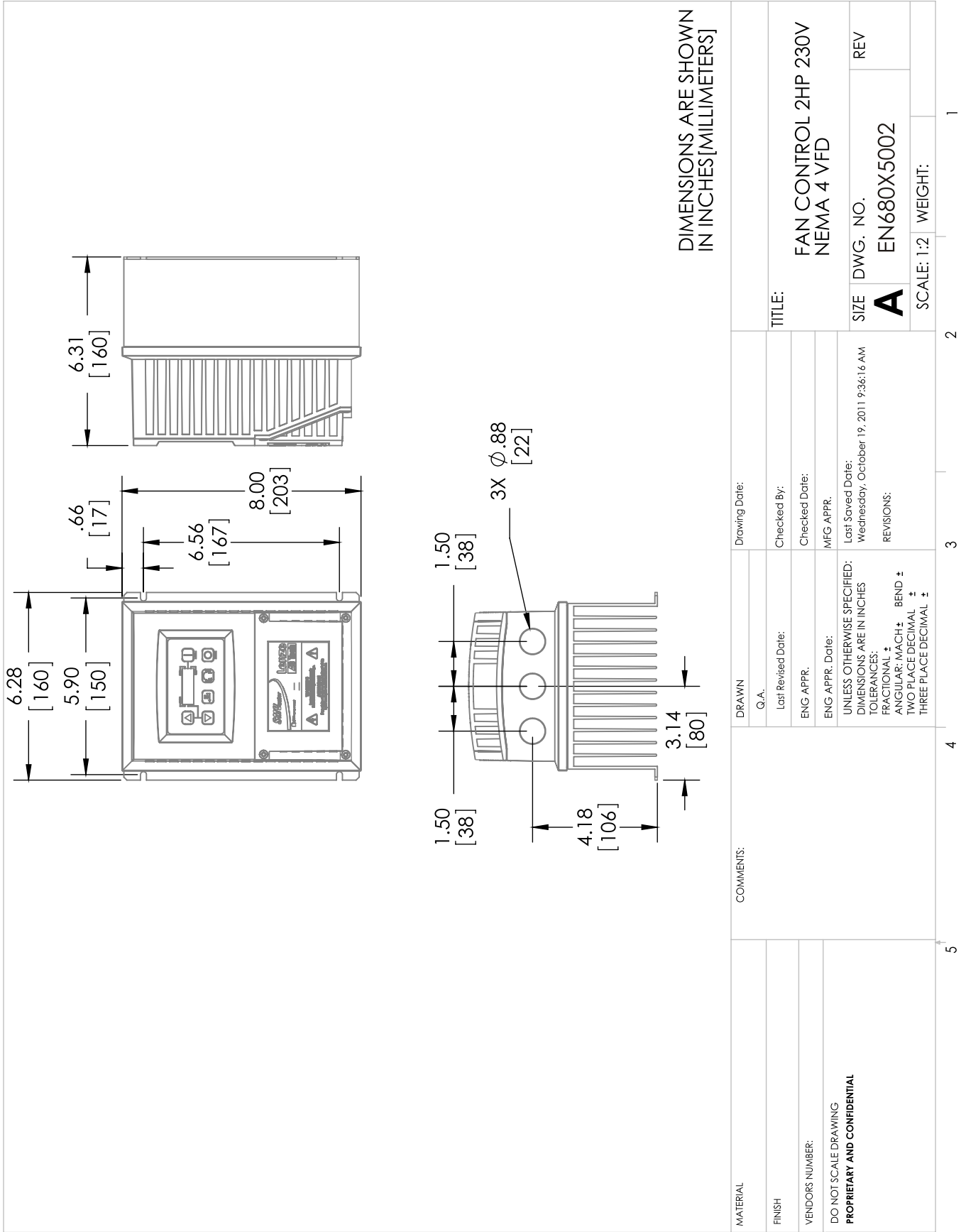
1	2	3	4	5
---	---	---	---	---

Guy Wire Mounting

DO NOT USE TURNBUCKLES

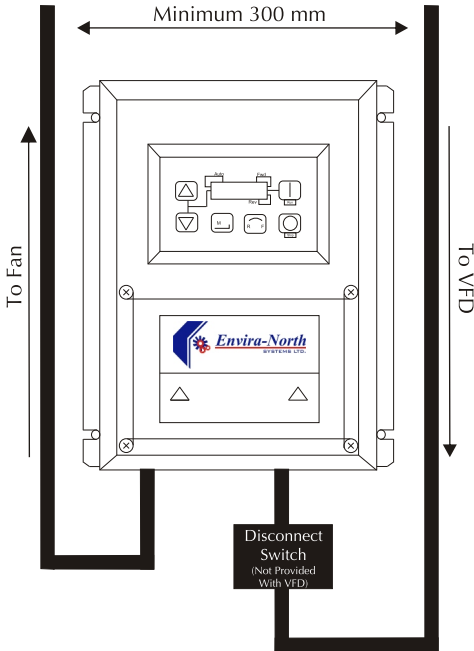
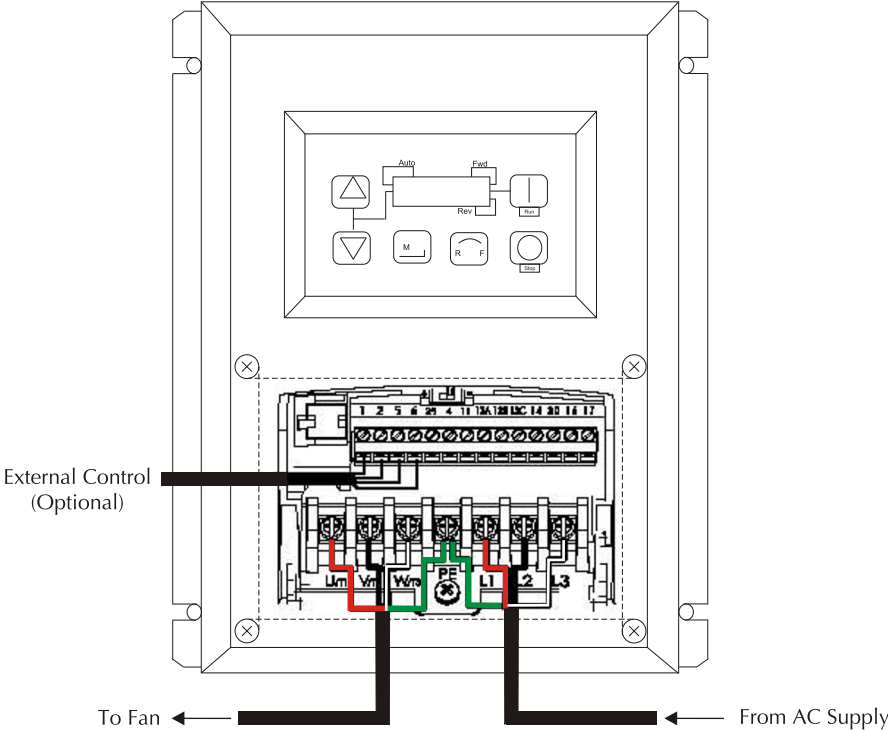


Alite 3 Design & Engineering

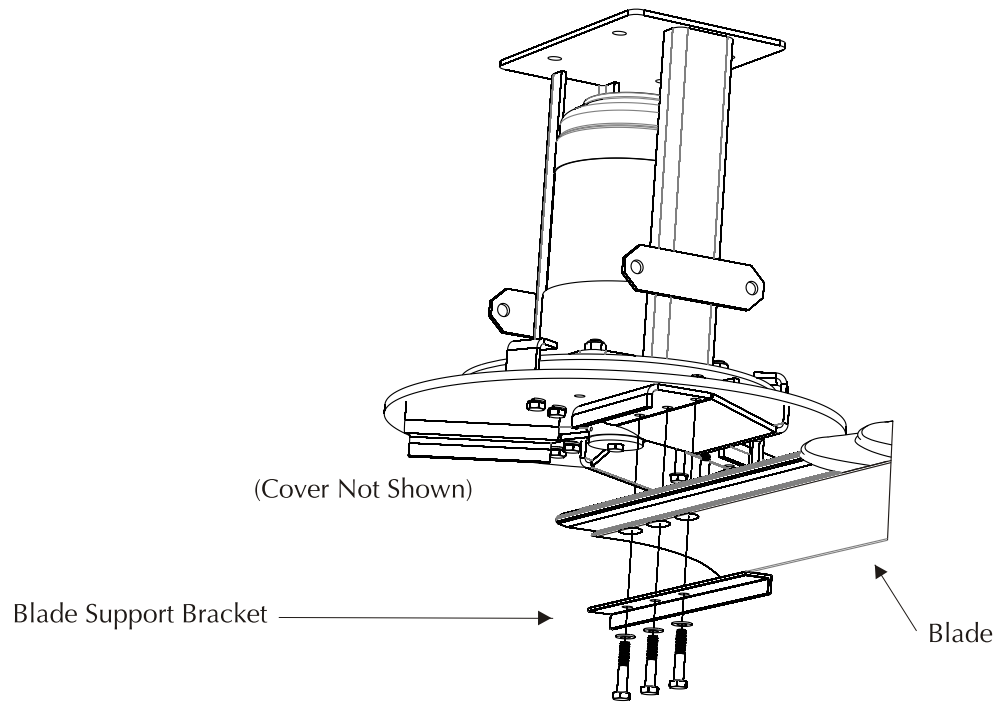


Alite 3 Design & Engineering

Wire Connections to VFD (Variable Frequency Drive)



Safety & Installation



Safety

Alite 3 HVLS Fans have the following measures in place to ensure the safety of our fans:

- **Safety Cable** - This cable ties together the vertical drop and the gear motor frame to the physical structure of your building.
- **Blade Support Brackets** - These clips help support the blade from underneath.
- **Guy Wires** - The wires have two functions; first, to avoid unnecessary sway of the fan in case of unbalanced blade(s) and second, to avoid large movements due to wind or draft.
- **Mount** - The mounting hardware has been designed and engineered to support the weight of the fan and provide a secure connection to the structure.

Installation

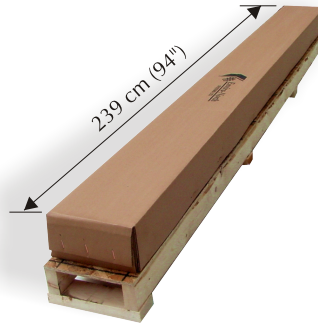
Please note that our installation manual offers simple step-by-step instructions for the successful installation of your Alite 3 HVLS Fan.

Alite 3 Design & Engineering

4.7m (15') Alite 3 Packaging Details



Dimensions
 EN780x1074 - Packaged Fan
 60 cm x 60 cm x 73 cm
 (23.6" x 23.6" x 28.75")
71 kgs (157 lbs)

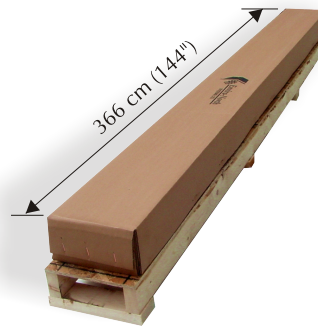


Dimensions
 EN780x2016 - Packaged Blades
 239 cm x 28 cm x 26.7 cm
 (94" x 11.0" x 10.5") **41 kgs (90 lbs)**

7.1m (23') Alite 3 Packaging Details



Dimensions
 EN780x1074 - Packaged Fan
 60 cm x 60 cm x 73 cm
 (23.6" x 23.6" x 28.75")
71 kgs (157 lbs)

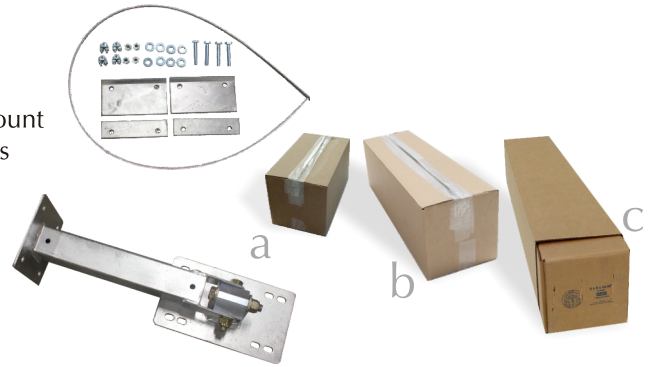


Dimensions
 EN780x2024 - Packaged Blades
 366 cm x 28 cm x 26.7 cm
 (144" x 11.0" x 10.5")
55 kgs (120 lbs)

Standard Fan Mounting

- a EN680x3003**
 300mm (1') Packaged UMH Mount
 38 cm x 23 cm x 23 cm - 10 kgs
 (15" x 9" x 9" - 22 lbs)
- b EN680x3006**
 600mm (2') Packaged UMH Mount
 71 cm x 23 cm x 23 cm - 15 kgs
 (28" x 9" x 9" - 33 lbs)

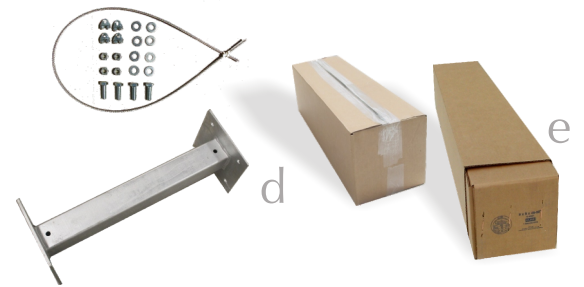
- c EN680x3012**
 1200mm (4') Packaged UMH Mount
 130 cm x 23 cm x 23 cm - 21 kgs
 (51" x 9" x 9" - 46 lbs)
- **Custom lengths available upon request.



Fan Extensions

- d EN680x4006**
 600mm (2') UMH Extension
 71 cm x 23 cm x 23 cm - 9.5 kgs
 (28" x 9" x 9" - 21 lbs)

- e EN680x4012**
 1200mm (4') UMH Extension
 125 cm x 23 cm x 23 cm - 14 kgs
 (49" x 9" x 9" - 31 lbs)
- **Custom lengths available upon request.



Fan Controls

- EN680x5002**
 0.75 kW (1 Hp) - 230 V - VFD
 31 cm x 23 cm x 23 cm - 3.2 kgs
 (12" x 9" x 9" - 7 lbs)

- EN680x5012**
 0.75 kW (1 Hp) - 460 V - VFD
 31 cm x 23 cm x 23 cm - 3.2 kgs
 (12" x 9" x 9" - 7 lbs)



Alite 3 Design & Engineering
