



Jimmy Clewes
Signature Series



Application Guide for **Synthetic Sand**, **Metallic Powder** & **Glow Powders**

Items Needed:

- Thin CA (Super Glue)
 - Thick CA (Super Glue)
 - Or an Epoxy
- CA De-bonder or Acetone for hand clean up

- Deft Lacquer[®] (sheen of your choice. Prefer Satin. The higher the sheen the slower the dry time in this application.)
- Jimmy Clewes Synthetic Sand, Metallic Powders or Glow Powders
(Your choice of colors)

Be sure to read and fully understand all Instructions before beginning.

The process described below works on both flat work or turned objects.

Take all Necessary Precautions. If you do not know what all the precautions are or the dangers involved Do Not Proceed until you do.



Once you Decide that you want to fill a void or a crack and what colors you want to fill it with apply a liberal amount of Thick CA (Super Glue) in said void or crack.

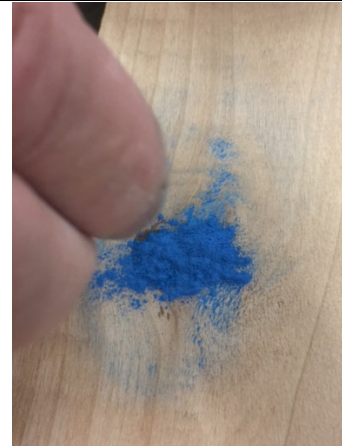
1) Apply liberal amount of Thick CA.



2) Rub in Liberal amount of Filler



3) Pour more filler on top so that it's above flush with the surface and apply Thin CA (Slowly)



4) Sand or Turn Flush to surface

This product contains **NO Silica** thus will not dull turning tools or other cutting blades.

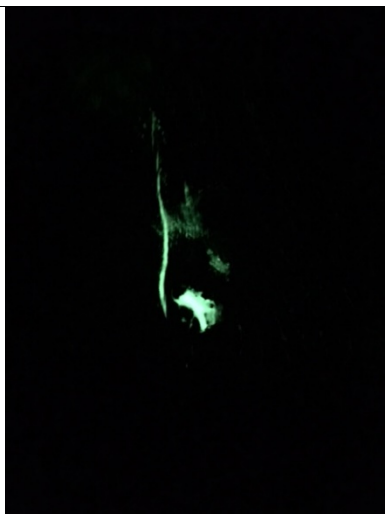
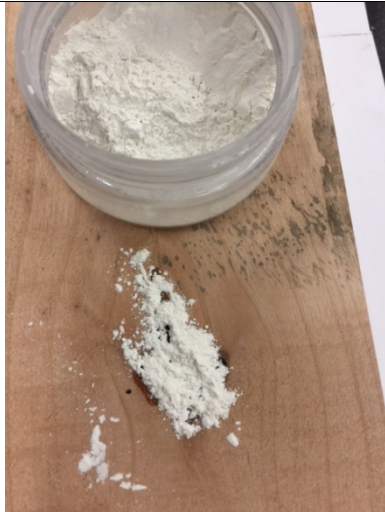


5) Apply Finish

Compatible with most finishing products.



Glow Powders are applied the same as the Synthetic Sand products above.



Another filled void:

There are two main types of phosphorescent (glow) pigments: Jimmy Clewes Glow powders are a synthetic type of a phosphorescent pigment which is a grown crystal that is meticulously ground and treated. It glows 20-30 times longer than the other type on the market and has a much shorter excitation time (usually 20 minutes or less) for full glow. Sun Light or Fluorescent lighting is all that is required to activate this product.

Making Pen Blanks using Jimmy Clewes Glow Powders.

Use a full container (1 ounce) of our Glow Powder to 8 fluid ounces of your favorite Polyester casting resin. Mix thoroughly and pour into a 3 inch by 5 inch mold approximately 1 inch deep. For best results add several drops of gel promoter to mixing cup to prevent settling of the Glow Powder. Allow appropriate time for full curing and cut to size adequate for pen blanks. This will yield 3 blanks.



Metallic Powders

We recommend using an epoxy and mixing the powder into the epoxy and then applying the mixture into the void, crack or decorative line. The Synthetic Sand and the Glow powders can be applied with the epoxy technique as well.





**For More information contact
Wood World of Texas LLC**
@ 972-669-9130
Or www.woodworldtx.com

To keep up with what **Jimmy
Clewes** is currently doing check
out his website @
www.jimmyclewes.com

