



INSTALLATION INSTRUCTIONS DOOR HANDLE VINYL KIT

Please read these installation instructions BEFORE you attempt to apply the vinyl kit.

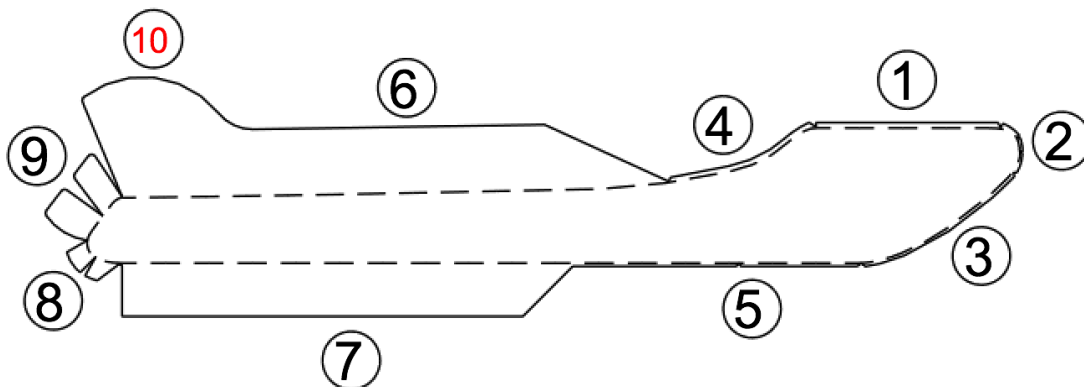
Installation of an EVANNEX® Vinyl Kit is a moderately challenging DIY project. It requires care, a steady hand, the ability to follow instructions, and the patience to remove and reapply the vinyl, if required. If you're uncomfortable with Vinyl Kit installation for any reason, we recommend that you contact a professional vinyl installer at a automotive custom shop or window tinting outlet and have that person do the installation.

VERY IMPORTANT: If you're unfamiliar with vinyl installation, please read our **GENERAL INSTRUCTIONS FOR APPLYING VINYL FILMS** before you attempt to install this vinyl kit, including information about **Returns** and our **Damage Disclaimer**. A **GENERAL INSTRUCTIONS** video is available at evannex.com.

INSTALLATION:

Video installation instructions are available at evannex.com.

In the following figure, the solid represents the outline of the door handle vinyl cover. The dashed line represents the outline of the OEM door handle. Edges 1 – 2 – 3 are at the “fat part” of the handle (the part you push inward to open the Model 3 door). The image shown is for door handle covers on the driver side of the vehicle. Passenger side handles are mirror images of the one shown, but installation is identical.



EVANNEX® — Tesla Aftermarket Accessories
Deerfield Beach, Florida USA •• evannex.com

Disclaimer: Evannex is not responsible for any vehicle damage caused during the installation or use of this product. Any costs associated with any vehicle damage are the sole responsibility of the purchaser.



Driver Handle Cover Installation

Step 1. Be certain that the door handle is clean and free from dust and debris. Also be sure to remove any visible fingerprints on the chrome.

Step 2. With the OEM door handle flush to the door surface (i.e., the handle is in the closed door position), carefully align the vinyl door handle cover, so that the dashed line shown in the figure aligns with the edges of the OEM handle. This means that there will be about a 2 mm overlap along edges 1, 2, 3, 4, and 5 and that the dashed line at locations 8 and 9 properly aligns with the end of the OEM handle.

Step 3. At the same time, be certain that the dashed outline in locations 6 and 7 align with the edges of the door.

Step 4. Smooth the top surface of the vinyl to conform to the top surface of the door handle. Be careful not to press down on the vinyl that overlaps any of the OEM door handle edges. Note that the vinyl will stick to the door surface, but the door can be opened by pushing on the fat part of the handle will moderate force.

Step 5. Press the "fat part" of the OEM handle to cause it to rotate outward. Holding the handle open, fold and smooth edge 7 to the under surface of the OEM handle. Be certain to eliminate any air bubbles at you go.

Step 6. Fold the tabs at locations 8 and 9 to cover the bottom portion of the end of the handle. A hair drier can be used to heat these tabs gently, making them more pliable and easier to wrap around the contours of the end of the handle.

Step 7. Fold edge 6 across the top of the OEM handle and smooth it to the surface. Be certain to eliminate any air bubbles at you go.

Step 8. Fold the rounded tab 10 over and across folded tabs 8 and 9. A hair drier can be used to heat Tab 10 gently, making it more pliable and easier to wrap around the contours of the end of the handle.

Note: A hair drier can help if stubborn wrinkles appear as a consequence of Steps 6 through 8. Heat the vinyl gently and wrinkles will shrink. Be ready to apply and re-apply the piece until you get it right. Patience is a virtue when applying vinyl wrap.

Step 9. Allow the door handle to close so that it is flush with the door surface.

Step 10. Using your fingernail or a squeegee, press edges 1, 2, 3, 4, and 5 so that they fold over the rounded edge of the OEM handle in that location. It's a good idea to use a hair drier to heat these edges to ensure that you get good adhesion.

Step 11. Check the outward facing surface of the handle cover to ensure that it is smooth and without air bubbles or wrinkles. If any do exist, use a hair drier to eliminate them. If a air bubble persists. Pricking it with a fine pin can help remove it.

Repeat steps 1 through 10 for each of the handles.

Your installation is now complete.