

EVANNEX

Tesla Model 3 Rear Diffuser
Installation Instructions - [Click HERE to Shop](#)



**Skill Level 1:
Easy**



Proper service and repair procedures are vital to the safe, reliable operation of all motor vehicles as well as the personal safety of those performing the repairs. Standard safety procedures and precautions (including use of safety goggles and proper tools and equipment) should be followed at all times to eliminate the possibility of personal injury or improper service which could damage the vehicle or compromise its safety.

INSTALLATION NOTES

- **RH** refers to the *passenger side* of the vehicle.
- **LH** refers to the *driver side* of the vehicle.
- Always use the proper torque specifications.
- If applicable to this installation, torque specifications will be listed throughout the document and at the end as well.
- Please read all of these instructions and familiarize yourself with the complete process **BEFORE** you begin.

GENERAL PREPARATION AND SAFETY INFORMATION

EVANNEX cares about your health and safety, please read the following safety information. This information pertains to automotive service in general, and while it may not pertain to every job you do, please remember and share these important safety tips.

- Park your car in a safe, well lit, level area.
- Shut the engine off and remove the key from the ignition switch.
- Make sure any remote start devices are properly disabled.
- **ALWAYS** wear safety glasses.
- Make sure the parking brake is applied until the vehicle is safely lifted and supported.
- Whether lifting a vehicle using an automotive lift or a hydraulic jack, be sure and utilize the factory specified lift points.
- Lifting a vehicle in an incorrect location can cause damage to the suspension/running gear.
- **ALWAYS** support the vehicle with jack stands.
- **ALWAYS** read and follow all safety information and warnings for the equipment you are using.

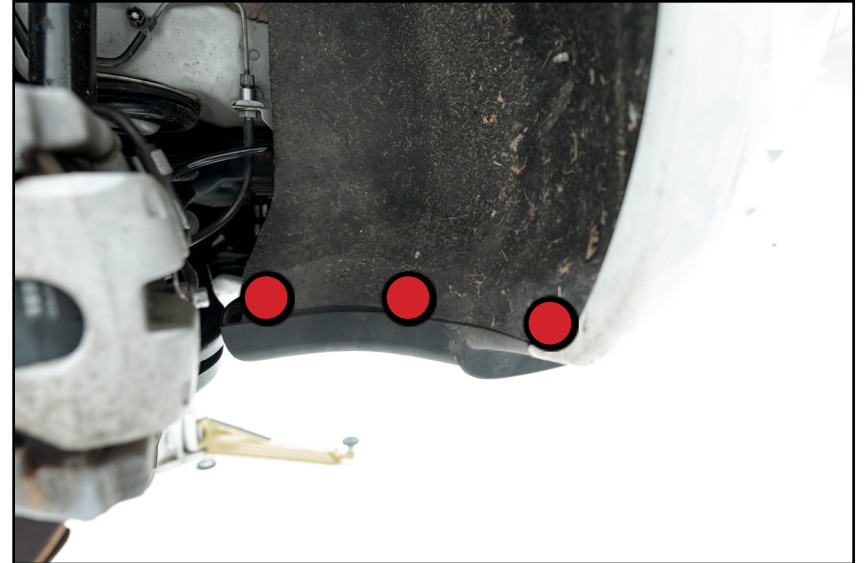


NEVER get underneath a vehicle that is supported only by a jack, and **ALWAYS** make sure that the vehicle is securely supported on jack stands.

REMOVING THE STOCK DIFFUSER

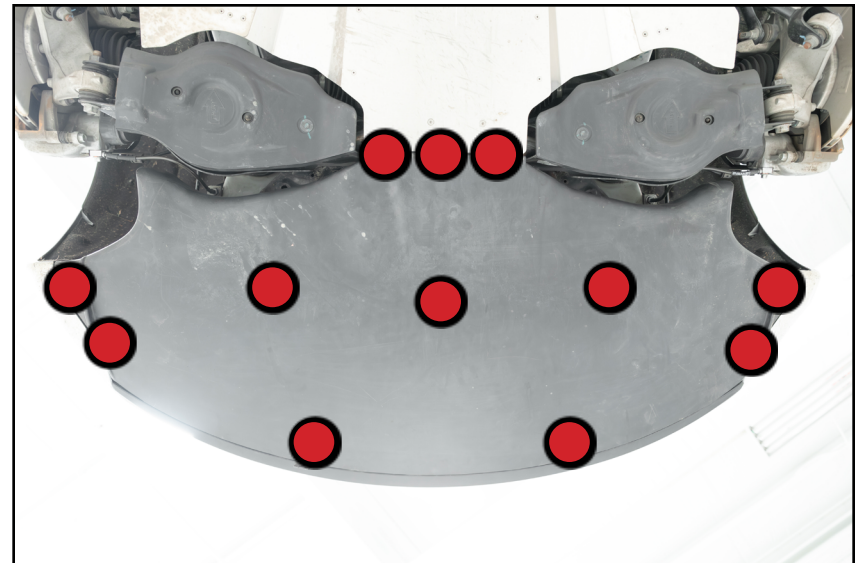
Step 1: Panel Clip Tool

Safely lift and support the vehicle, then remove the rear wheels. Remove the three panel clips (**RED** circles) to free the fender liner from the stock diffuser.



Step 2: 10mm Socket & Ratchet

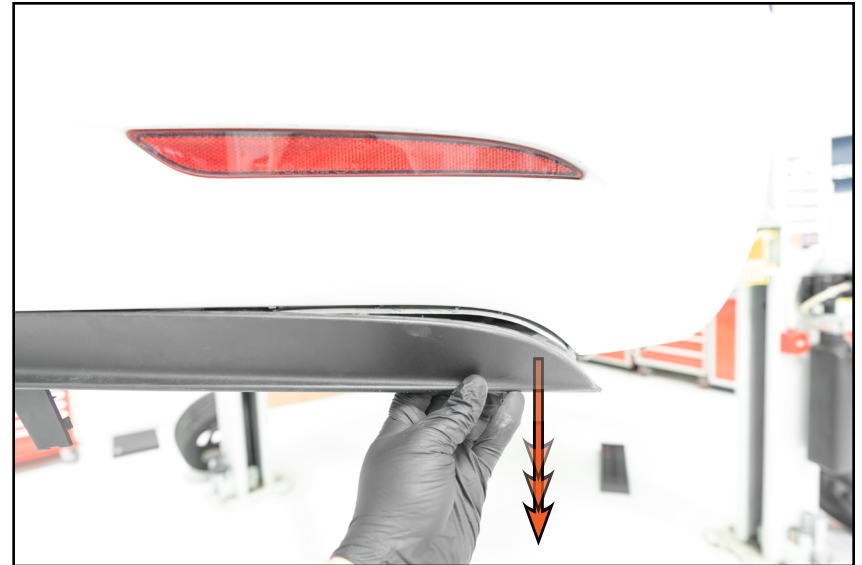
Remove the twelve hex screws (**RED** circles) that secure the insulation panel to the underside of the vehicle.



REMOVING THE STOCK DIFFUSER

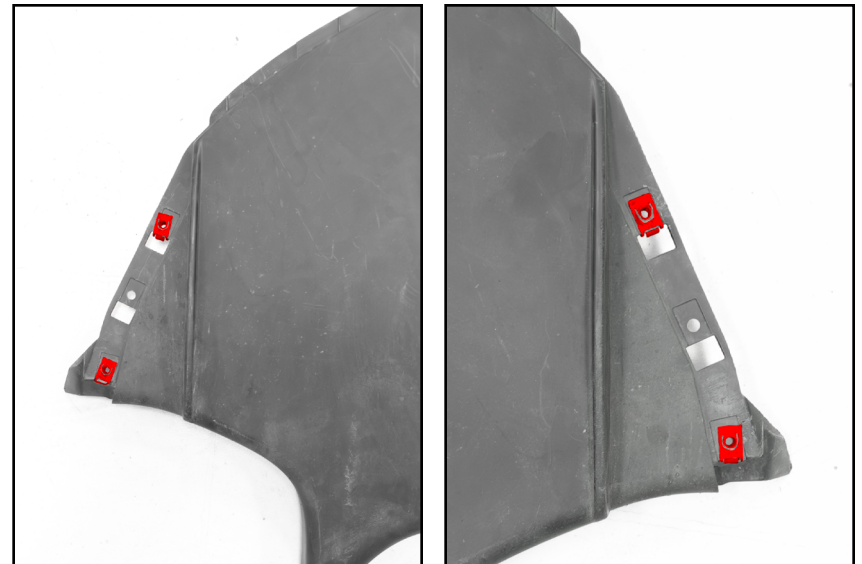
Step 3:

Remove the stock rear diffuser by pulling the diffuser rearward starting at the corners and working your way towards the center.



Step 4: Angled Pick Tool

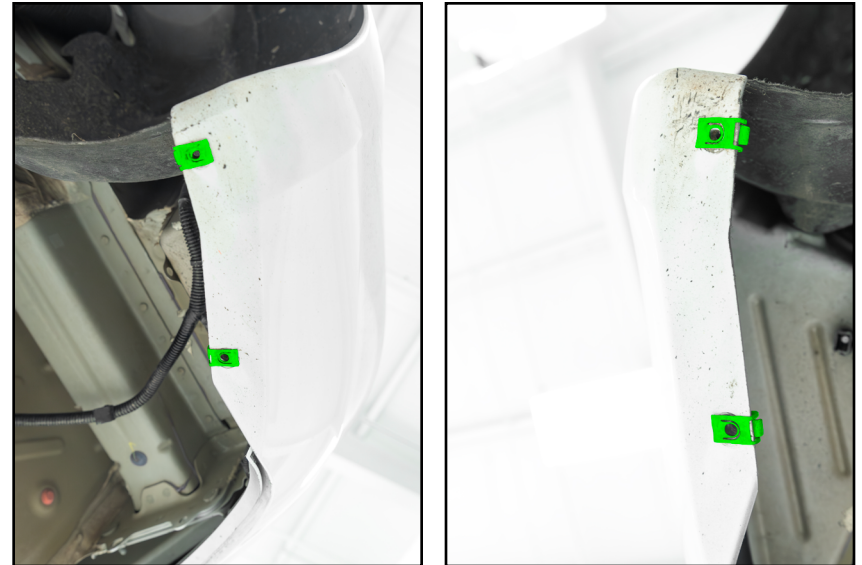
Remove the clip nuts (highlighted in **RED**) from the stock insulation panel.



INSTALLING THE NEW DIFFUSER

Step 1:

Transfer the clip nuts (highlighted in **GREEN**) from the stock insulation panel to the bottom of the rear fenders as shown.



Step 2: 4mm Hex (Allen), 10mm Wrench & Ratchet

Install the rear diffuser bracket (highlighted in **GREEN**) with the provided M6 hardware (arrows).



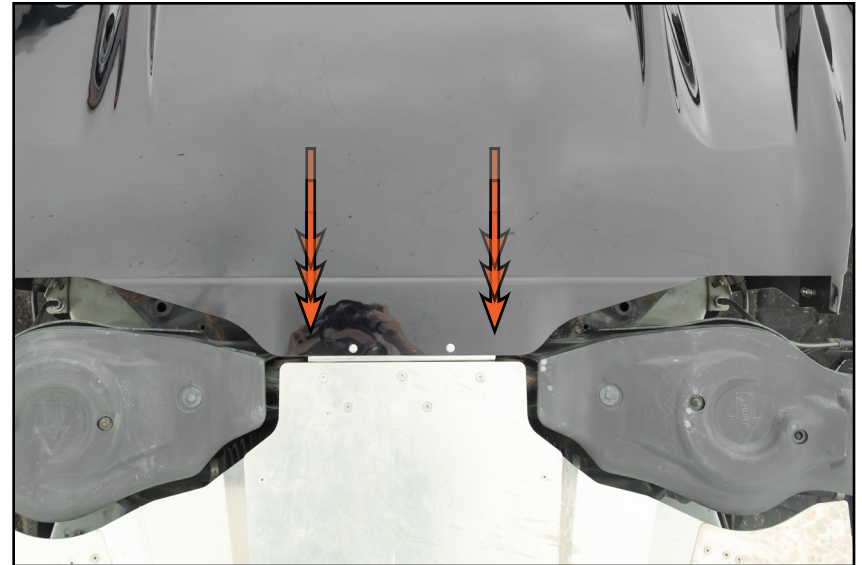
INSTALLING THE NEW DIFFUSER

Step 3:

Install the diffuser by carefully sliding the mounting bracket underneath the insulation panel.



For our installation, we already have installed our Evannex rear skid plate, mounting instructions are still applicable for use with the Evannex skid plate as well.



Step 4:

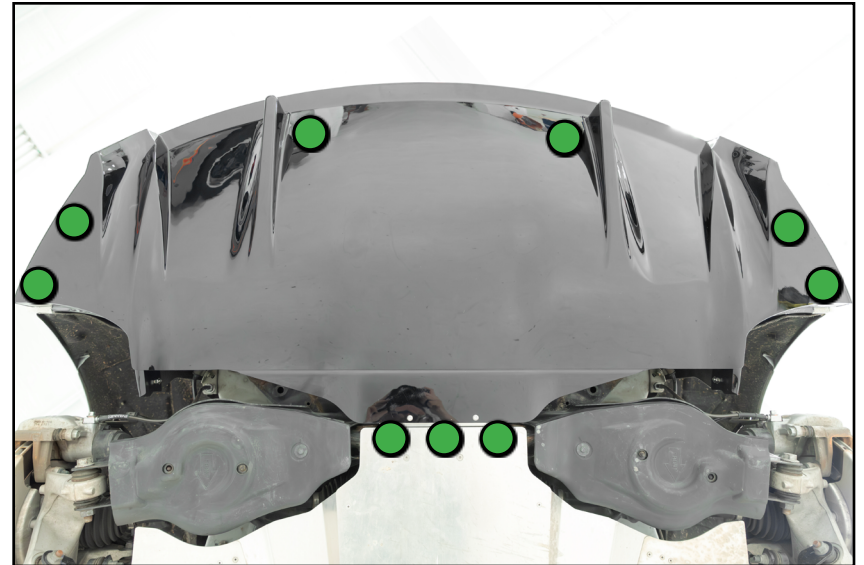
Align the clips with the new diffuser with the corresponding holes in the rear bumper and push the diffuser inward until they are fully seated.



INSTALLING THE NEW DIFFUSER

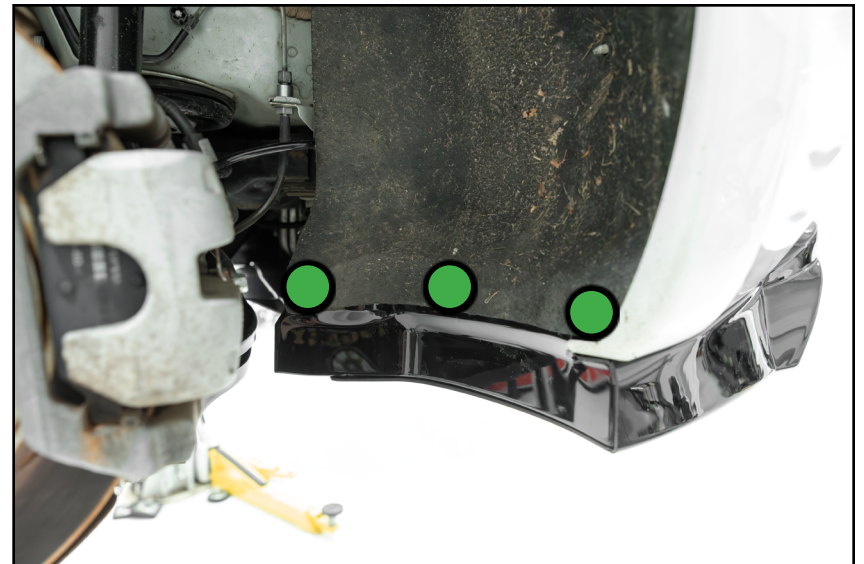
Step 5: 10mm Socket & Ratchet

Reuse nine of the screws (**GREEN** circles) from the stock insulation panel to secure the new diffuser to the underside of the vehicle.



Step 6:

Reinstall the panel clips (**GREEN** circles) that secure the fender liner to the diffuser, then reinstall and torque the wheels to 175 Nm (129 ft. lbs).



Congratulations, your installation is complete!

Your Rear Diffuser installation is complete!



These instructions are provided as a courtesy by: **EVANNEX**

Proper service and repair procedures are vital to the safe, reliable operation of all motor vehicles as well as the personal safety of those performing the repairs. Standard safety procedures and precautions (including use of safety goggles and proper tools and equipment) should be followed at all times to eliminate the possibility of personal injury or improper service which could damage the vehicle or compromise its safety. Although this material has been prepared with the intent to provide reliable information, no warranty (express or implied) is made as to its accuracy or completeness. Neither is any liability assumed for loss or damage resulting from reliance on this material. SPECIFICALLY, NO WARRANTY OF MERCHANTABILITY, FITNESS FOR A PARTICULAR PURPOSE OR ANY OTHER WARRANTY IS MADE OR TO BE IMPLIED WITH RESPECT TO THIS MATERIAL. In no event will EVANNEX, Incorporated or its affiliates be liable for any damages, direct or indirect, consequential or compensatory, arising out of the use of this material.