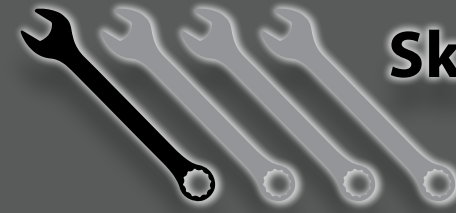


EVANNEX

Tesla Model 3 Front Splitter Kit
Installation Instructions - [Click HERE to Shop](#)



Skill Level 1:
Easy



Proper service and repair procedures are vital to the safe, reliable operation of all motor vehicles as well as the personal safety of those performing the repairs. Standard safety procedures and precautions (including use of safety goggles and proper tools and equipment) should be followed at all times to eliminate the possibility of personal injury or improper service which could damage the vehicle or compromise its safety.

INSTALLATION NOTES

- **RH** refers to the *passenger side* of the vehicle.
- **LH** refers to the *driver side* of the vehicle.
- Always use the proper torque specifications.
- If applicable to this installation, torque specifications will be listed throughout the document and at the end as well.
- Please read all of these instructions and familiarize yourself with the complete process **BEFORE** you begin.

GENERAL PREPARATION AND SAFETY INFORMATION

EVANNEX cares about your health and safety, please read the following safety information. This information pertains to automotive service in general, and while it may not pertain to every job you do, please remember and share these important safety tips.

- Park your car in a safe, well lit, level area.
- Shut the engine off and remove the key from the ignition switch.
- Make sure any remote start devices are properly disabled.
- **ALWAYS** wear safety glasses.
- Make sure the parking brake is applied until the vehicle is safely lifted and supported.
- Whether lifting a vehicle using an automotive lift or a hydraulic jack, be sure and utilize the factory specified lift points.
- Lifting a vehicle in an incorrect location can cause damage to the suspension/running gear.
- **ALWAYS** support the vehicle with jack stands.
- **ALWAYS** read and follow all safety information and warnings for the equipment you are using.



NEVER get underneath a vehicle that is supported only by a jack, and **ALWAYS** make sure that the vehicle is securely supported on jack stands.

INSTALLING THE NEW FRONT SPLITTER KIT

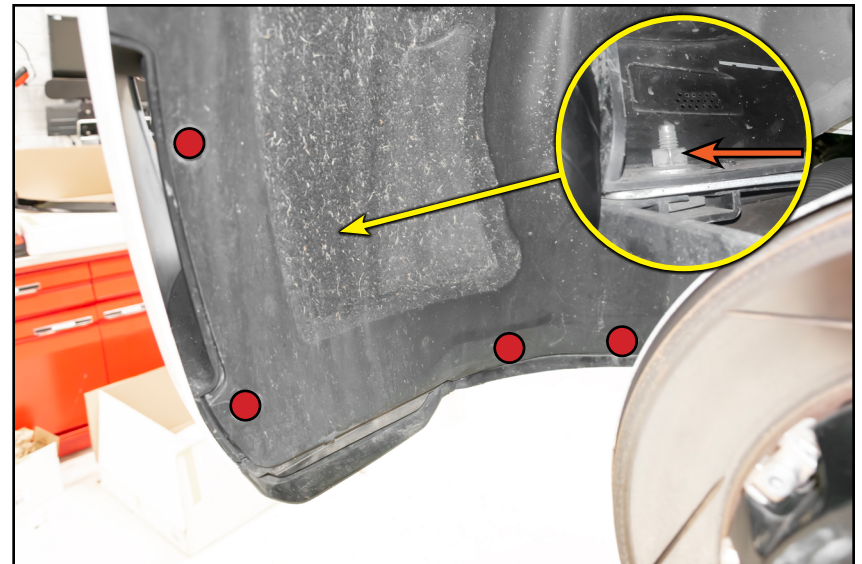
Step 1: 21mm Socket & Breaker Bar

Safely lift and support the vehicle, then remove the front wheels.



Step 2: Panel Clip Tool, 10mm Socket & Ratchet

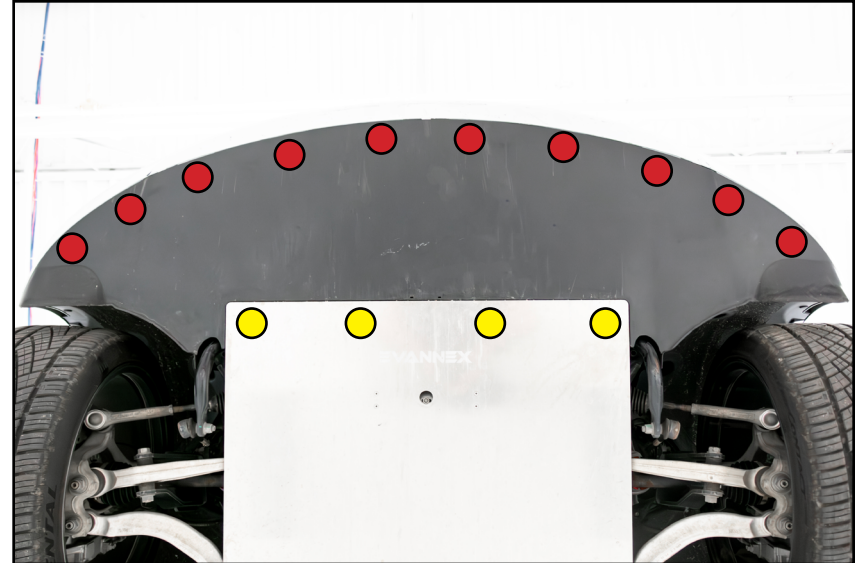
Remove the four clips (highlighted in **RED**) and set them aside. Pull back the fender liner to access and remove the nut (arrow in inset photo).



INSTALLING THE NEW FRONT SPLITTER KIT

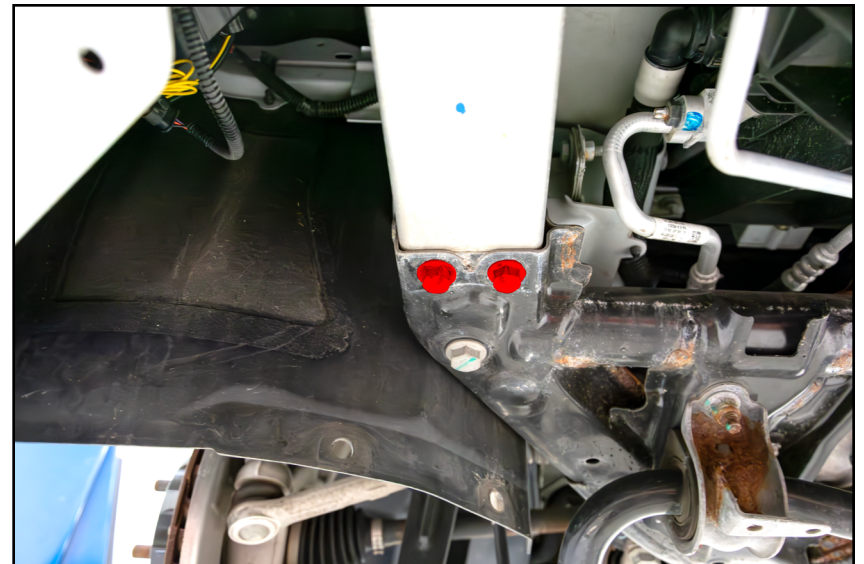
Step 3: 4mm Hex (Allen)

Remove the four screws (**YELLOW** circles), remove the ten clips (**RED** circles), then remove the stock front insulation panel.



Step 4: 15mm Socket & Ratchet

Remove the two bolts (highlighted in **RED**) from the front bumper reinforcement brackets on either side, and set them aside.



INSTALLING THE NEW FRONT SPLITTER KIT

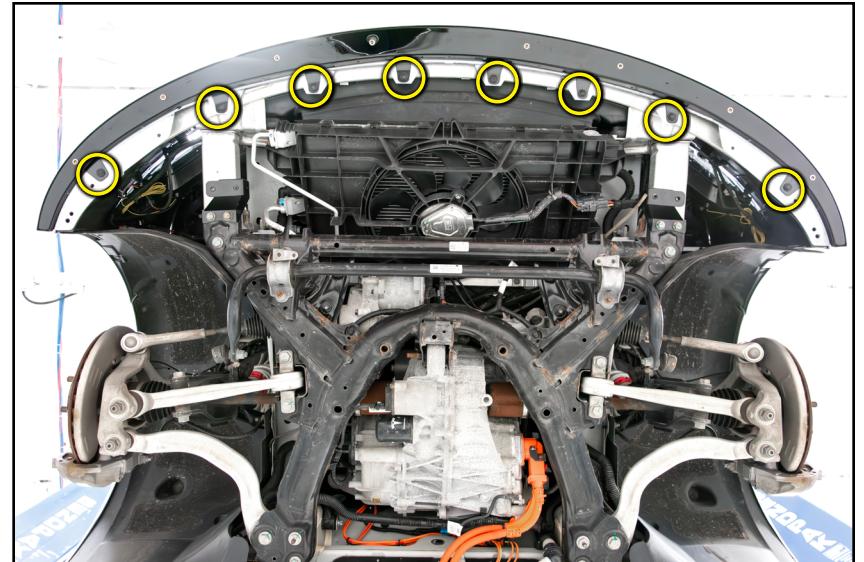
Step 5:

Dog ear the backing strips on the front lip before lifting into place. Once aligned remove the backing strips and push upward on the front lip to adhere it to the front bumper cover.



Step 6:

Install the panel clips (circled in **YELLOW**) to secure the front lip to the bumper.



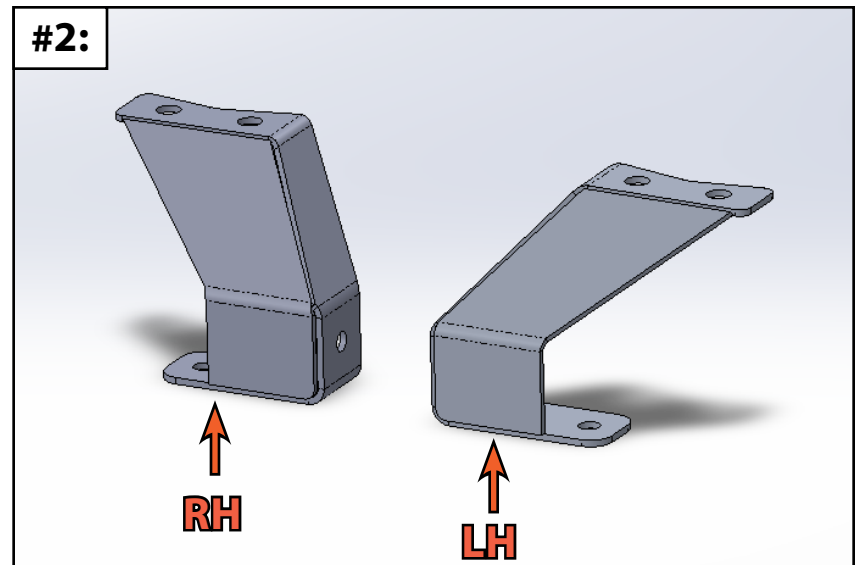
INSTALLING THE NEW FRONT SPLITTER KIT

Step 7: 15mm Socket & Ratchet

Reuse the bumper reinforcement bracket bolts to install the splitter brackets (highlighted in **GREEN** in **photo #1**), ensuring the open portion of the bracket faces towards the rear of the vehicle as shown.



Reference **photo #2** for splitter bracket placement.



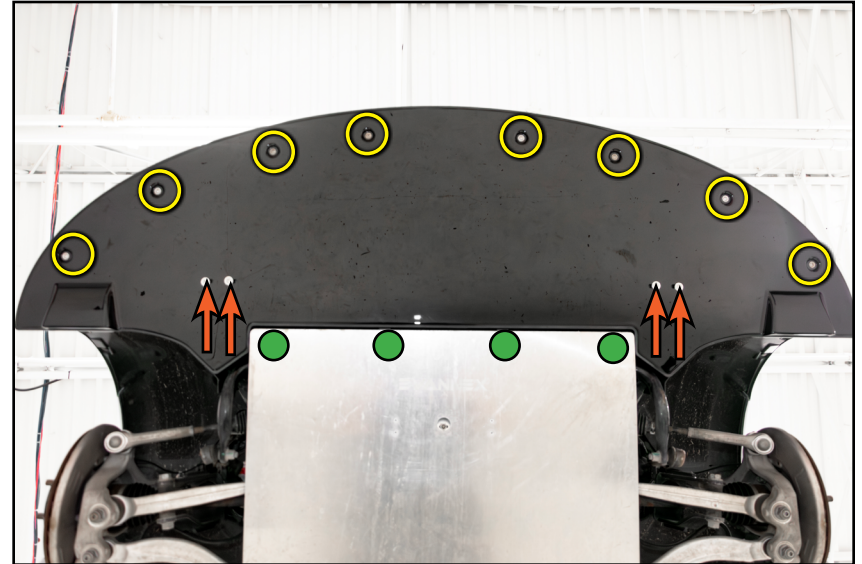
INSTALLING THE NEW FRONT LIP SPLITTER

Step 8: 4mm Hex (Allen)

Install the front splitter using eight M6 x 20mm screws (circled in **YELLOW**), then install the remaining M6 x 20mm screws and M6 oversized washers (arrows) into the brackets. Reinstall the four screws (highlighted in **GREEN**) tightening them until snug.



CAUTION: Do not over-tighten the screws, overtightening the screws can damage the front splitter.



Step 9: 21mm Socket & Torque Wrench

Reinstall the panel clips (highlighted in **GREEN**) to secure the fender liner to the front lip splitter.

Reinstall the wheels and torque the nuts to 175 Nm (129 Ft-lbs).

Congratulations, your installation is complete!

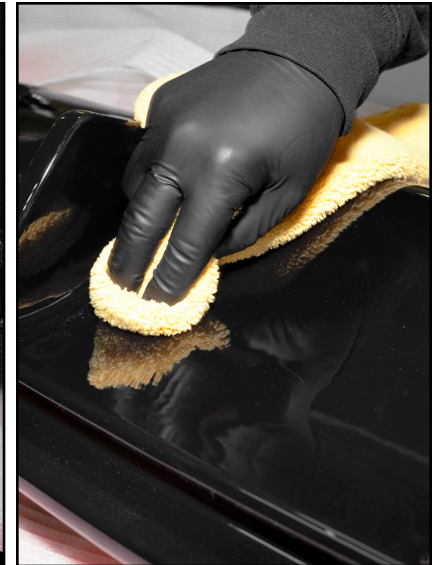


CLEANING & CARE INSTRUCTIONS

ABS:

Carefully remove any smudges, residue, or fingerprints from the material using a clean microfiber cloth and quick detailing spray.

- Over time road debris, car washes, and contaminants can cause tiny scratches and swirls to form, detracting from the glossy finish on your new diffuser.
- If this happens, we highly recommend using an abrasive cutting or polishing compound to smooth out any scratches and restore the glossy finish.
- Before removing scratches be sure to thoroughly wash and dry the diffuser to remove any contamination.



Your Front Lip Splitter Kit installation is complete!



These instructions are provided as a courtesy by: **EVANNEX**

Proper service and repair procedures are vital to the safe, reliable operation of all motor vehicles as well as the personal safety of those performing the repairs. Standard safety procedures and precautions (including use of safety goggles and proper tools and equipment) should be followed at all times to eliminate the possibility of personal injury or improper service which could damage the vehicle or compromise its safety. Although this material has been prepared with the intent to provide reliable information, no warranty (express or implied) is made as to its accuracy or completeness. Neither is any liability assumed for loss or damage resulting from reliance on this material. SPECIFICALLY, NO WARRANTY OF MERCHANTABILITY, FITNESS FOR A PARTICULAR PURPOSE OR ANY OTHER WARRANTY IS MADE OR TO BE IMPLIED WITH RESPECT TO THIS MATERIAL. In no event will EVANNEX, Incorporated or its affiliates be liable for any damages, direct or indirect, consequential or compensatory, arising out of the use of this material.