



# Premium Arm Rest Zarf (PARZ) Instructions for Professional Installation

---

## DISCLAIMER:

The installation of any aftermarket part may void or otherwise adversely affect your factory warranty. It is the sole and exclusive responsibility of the purchaser to determine the suitability of PARZ for his or her use, and the purchaser shall assume all legal, personal injury risk, and liability and all other obligations, duties and risks associated therewith.

It is the installer's responsibility to correctly install PARZ and any related accessories. The information contained in the following assembly instructions is believed to be reliable, but many factors can lead to installation issues. The installer must review all available manufacturer information, disassemble original equipment components carefully, test fit PARZ before reassembly, and consider other factors that might affect a successful outcome. Neither Teslaccessories, LLC or Hauptburg Industries, LLC are responsible for installation errors or any damage that occurs as a consequence of any installation error or for any inadvertent errors or omissions in the following installation instructions.

Please read instructions in their entirety prior to attempting installation.

Tools used in this installation procedure:

- (1) T20 torx screwdriver;
- (2) 8mm nut driver; and
- (3) plastic putty knife.

---

Step (1) - Tilt both front seat backs forward completely, and then move both front seats forward completely. Perform the remainder of this procedure from the rear seat.

Step (2) - Slide the stock arm rests toward the rear seats, exposing the front cup holders in the central arm rest assembly.

Step (3) - Remove the rubber insert from the front cup holders by pinching together and lifting at the two central tabs.

Step (4) - Loosen and remove the two screws in the cup holders using the included T20 torx screwdriver (Fig.1). Set aside screws for reuse.



Fig. 1

Step (5) - Slide the stock arm rests forward, covering the front cup holders.

Step (6) - Remove the central arm rest assembly's back panel by: (a) inserting the plastic putty knife blade in the gap directly beneath the air conditioning vents (Fig. 2); (b) gently wedging open the back panel enough to firmly grip it's upper portion in hand (Fig. 3); and (c) pulling the panel down and completely away from the assembly, releasing the metal tension clips holding the panel in place.



Fig. 2



Fig. 3

Step (7) - Using the plastic putty knife and hands, gently wedge open the central arm rest assembly's side panels (Fig. 4) far enough to expose and comfortably access two midline screws on either side of the assembly (Fig. 5). Do not remove these side panels.



Fig. 4



Fig. 5

Step (8) - Loosen and remove the two screws on either side of the central arm rest assembly using the T20 torx screwdriver (Fig. 6). Work slowly and carefully to avoid damaging the screw heads or dropping the screws into the assembly. Set aside screws for reuse.



Fig. 6

Step (9) - Taking care to ensure the central assembly side panels are clear of the edges of the air conditioning vent assembly, remove the rear air conditioning vent assembly by gently pulling it straight out (Fig. 7). A slight upward rotation as you pull may ease extraction. If the air conditioning vent assembly proves difficult to remove, carefully insert the plastic putty knife blade in the gap between the rear top deck of the central arm rest assembly and the air conditioning vent assembly and gently lever in order to help release the tension clips holding the air conditioning vent assembly in place. Be careful to avoid damaging the wood veneer on the top deck of the central arm rest assembly.



Fig. 7

Step (10) - Lying on the floor of the vehicle cabin, locate and remove two screws behind the flange of the air conditioning duct using the T20 torx screwdriver from below (Fig. 8). Pull the inside of the flexible air conditioning duct to the side, as necessary, to provide greater access to the screws. Set aside screws for reuse.



Fig. 8

Step (11) - With hands, gently wedge open the top of the central arm rest assembly's front panel, releasing the top two metal tension clips (Fig. 9).



Fig. 9

Step (12) - Remove the top portion of the central arm rest assembly by: (a) first lifting the rear of the assembly top; and (b) lifting entire assembly top simultaneously forward and upward until free of the lower portion of the central arm rest assembly (Fig. 10). Place the top of the assembly on a stable work surface upholstery-side down, exposing the four nuts that hold the arm rests to the assembly.



Fig. 10

Step (13) - Remove the four nuts using the 8mm nut driver (Fig 11). Set aside nuts for reuse. Lift the assembly away from the arm rests, exposing the slide mechanisms on the underside of the arm rests.



Fig. 11

Step (14) - Using the T20 torx screwdriver, remove the screws that fasten the slide mechanism to the driver-side stock arm rest (Fig 12). Set aside screws for reuse.



Fig. 12

Place the slide mechanism on the underside of the driver-side PARZ unit, lining up the slide mechanism holes with the holes in the underside of the PARZ unit. Attach the stock driver-side slide mechanism to the driver-side PARZ unit using the same screws (Fig. 13). Be careful to not strip the holes on the underside of the PARZ unit. Repeat this process to attach the stock passenger-side slide mechanism to the passenger-side PARZ unit.

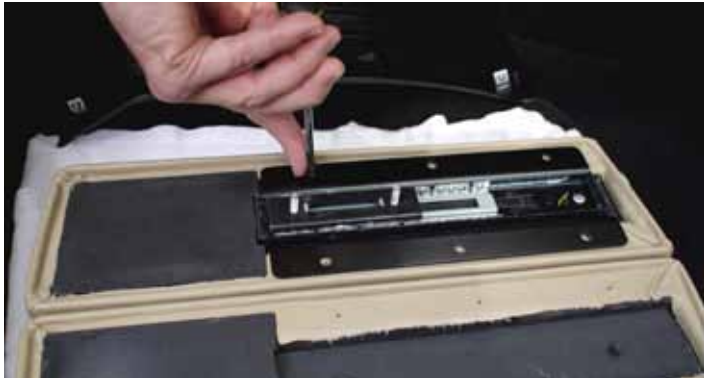


Fig. 13



Fig. 14

Step (15) - With both PARZ units fastened to the stock slide mechanisms, attach both PARZ units to the arm rest assembly top with the set aside nuts and the 8mm nut driver. Slide both PARZ units forward to cover the front cup holders in the top portion of the arm rest assembly.

Step (16) - Put the top of the arm rest assembly back in place by: (a) first lining up the front notch and rear hole (Fig. 14) with the nesting pins in the lower portion of the central assembly (Fig. 15); (b) placing the front notch on the front pin; and (c) gently lowering the assembly down onto the rear pin so the assembly sits in its original position.

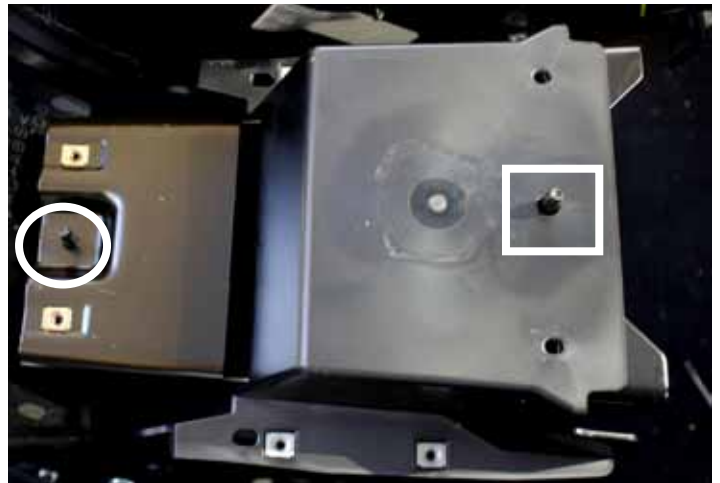


Fig. 15

Step (17) - Refasten the central arm rest assembly front panel by gently pushing the panel to reengage the metal tension clips.

Step (18) - Lying on the floor of the vehicle cabin, replace and tighten the two screws on either side of the air conditioning duct with the T20 torx screwdriver.

Step (19) - Replace and tighten the two midline arm rest assembly screws on both sides of the assembly using the T20 torx screwdriver.

Step (20) - Replace rear air conditioning vent assembly.

Step (21) - Working forward to back, push the central arm rest assembly side panels back in place, ensuring the metal tension clips engage for a snug panel fit.

Step (22) - Push the central arm rest assembly's back panel in place, engaging the metal tension clips.

Step (23) - Slide the PARZ back toward the rear seat to expose the front cup holders. Replace and tighten the screws in the front cup holders using the T20 torx screwdriver.

Step (24) - Reinstall the rubber insert into the front cup holders.

Step (25) - Restore front seats to original position.

---