

To Install an Apron Sink using Cabinets to Go Cabinets...

Option 1 – using a traditional Sink Base

(easiest, but only works with relatively shallow apron sink... 8" high apron for undermount or 9 ¼" high for topmount)



Step 1: remove false drawer front on sink base



Step 2: Cut top stile, add support inside cabinet for the sink



Step 3: Install sink

Note: Base doors are all the same height with this option

To Install an Apron Sink using Cabinets to Go Cabinets...

Option 2 – using a 24" deep wall cabinet as a base
(requires additional custom labor, will work with taller apron fronts)



Step 1: Install wall cabinet so that bottom of face frame
Is even with bottom of adjoining face frames

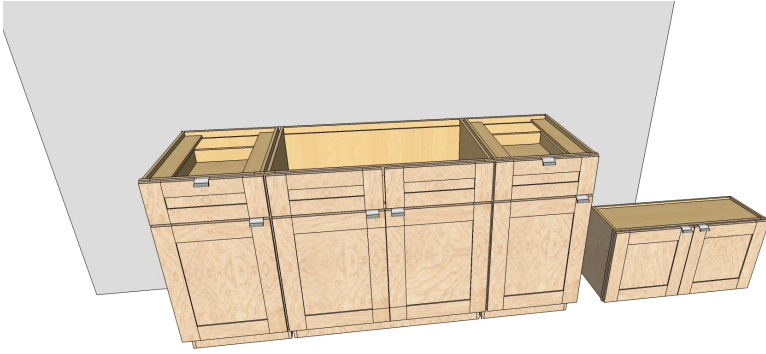


Step 2: Cut top of wall cabinet for plumbing, add
support for sink, build toe base, add stiles to frame
around the sink apron

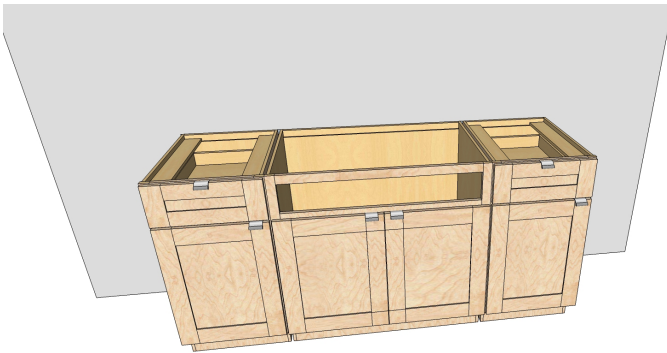


Step 3: Install sink
Note: Base doors are shorter below
sink with this option

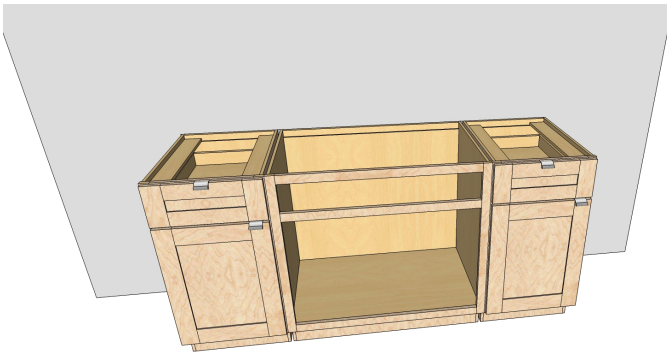
To install an Apron Front Sink using Cabinets to Go Products:



You will need:
36" base cabinet
36" x 18" wall cabinet
6" filler



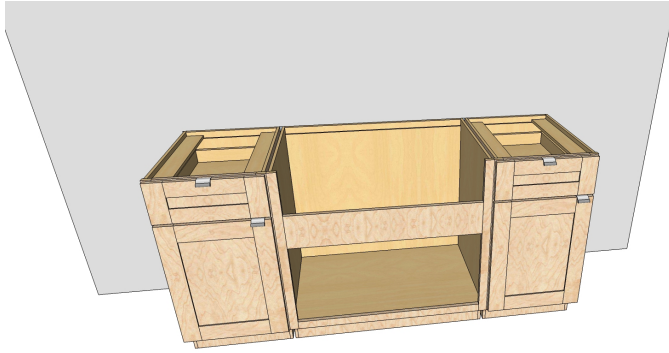
Step 1:
Remove False Drawer
fronts. You will not need
them.



Step 2:
Remove Doors. You
will not need them.

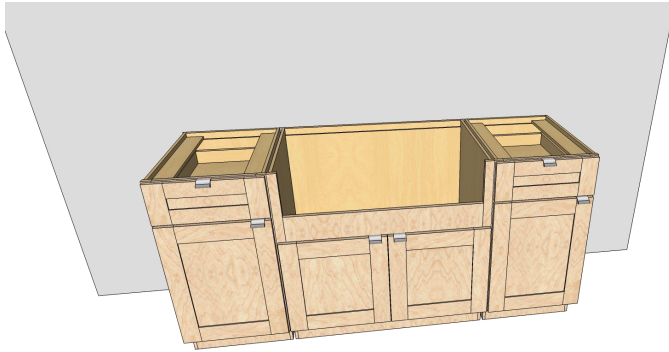


Step 3:
Use a saw to cut
through the 2 upper
horizontal stiles



Step 4:

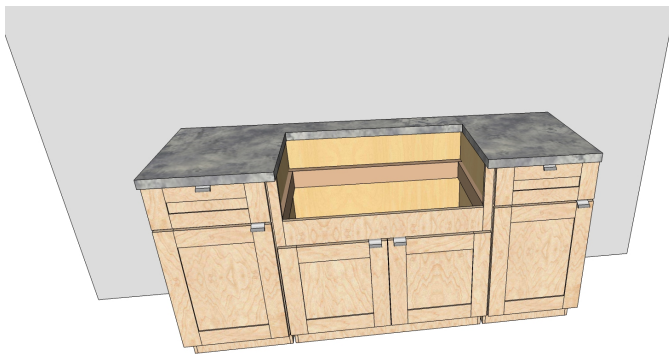
Cut the 6" filler and attach horizontally as shown



Step 5:

Attach the doors from the 36" x 18" wall cabinet. You will not need the rest of the 36" x 18" wall cabinet.

(you will need to drill new holes on the sink cabinet frame for the hinges)



Step 6:

Attach extra support inside the sink base as needed to support the weight of the sink



Step 7:

Install your sink. Enjoy!

IMPORTANT: When this installation is finished, you will have cabinet parts left over. This is normal. You basically took parts from 2 cabinets and turned them into one cabinet.