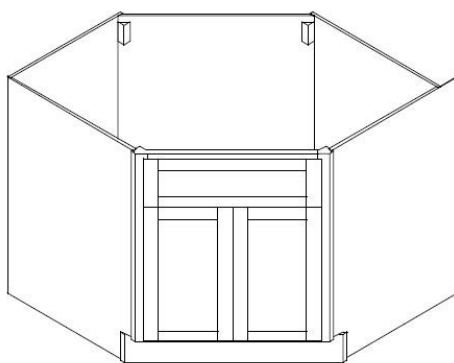


**Sink Base Corner
ASSEMBLY INSTRUCTIONS**



These assembly instructions are only applicable for all sink base corner cabinets.
ITEM #CBD36, CBD42



ATTENTION: For questions or concerns about your cabinets, assembly or installation, please contact our dedicated Customer Care Team at **1-800-CABINET (222-4638)**. Our Customer Care associates are here for you every step of the way.

► **General Instructions:**

Thank you for purchasing a Cabinets To Go product. You are now the proud owner of a high quality product designed to face the test of daily use and guaranteeing your enjoyment for many years to come.

Carefully read the instructions before starting the installation.

During assembly, please follow all generally accepted safety procedures.

Failure to adhere to the following instructions will invalidate the warranty and Cabinets To Go will decline any responsibility for any damages caused. Any installation which does not correspond to the instructions may result in defects, malfunctioning parts, significant damage and/or injury.

Before the assembly begins, check that all appropriate and required plumbing and electrical connections exist.

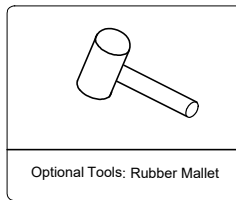
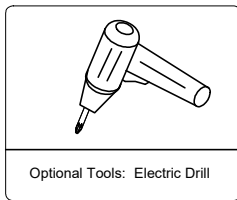
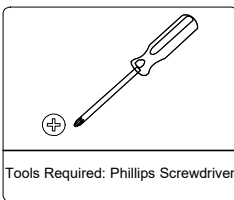
Before drilling, make absolutely sure that there are no pipes (gas, water, electricity, heating, etc.) at the drilling location. Cabinets To Go will not be held responsible for failure to follow these instructions.

PRIOR TO ASSEMBLY, PLEASE MAKE SURE YOU HAVE ONE FACE FRAME BOX AND ONE CARCASS BOX, WHICH HAVE ALL THE PARTS IN THE QUANTITIES MENTIONED BELOW. IF YOU ARE MISSING ANY PARTS, PLEASE STOP AND CONTACT CUSTOMER CARE IMMEDIATELY AT 1-800-CABINET.

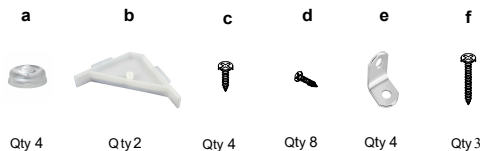
► **Items Quantity:**

| Item | Description | Qty |
|-------|--|-----|
| A | Face Frame with Doors and Drawer Face | 1 |
| B1 B2 | Left Side Panel B1 & Right Side Panel B2 | 2 |
| C | Bottom Panel | 1 |
| D | Back Panel | 1 |
| E1 E2 | Left Rear Side Panel E1 & Right Rear Side Panel E2 | 2 |
| F | Toe Kick | 1 |
| G | Hardware Box: | |
| | Round Buttons 4pcs, Plastic corner bracket 2pcs, 1/2" round head screws 4pcs, 1" screw 3pcs, metal corner braces 4 pcs, 1/2" flat head screws 8pcs | |

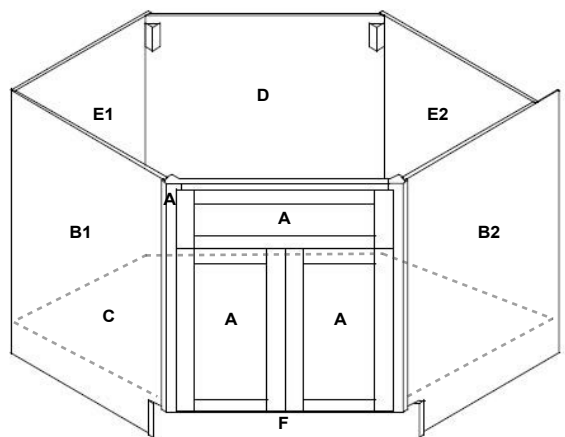
► **Required Tools:**



► **Hardware Box:**



The materials listing above are for the largest unit in this instruction set. Smaller units may require less hardware and materials; therefore, your item may contain a smaller number of each.



► **Instructions:**

1. Place the face frame (A) face down on a flat soft working surface to ensure that the face is not scratched or damaged. **(Figure 1)**

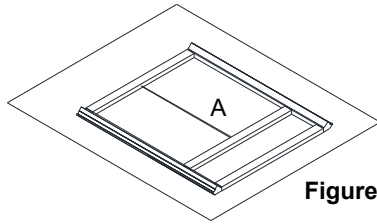


Figure 1

2. Installing the Side Panels: Insert left side panel (B1) and right side panel (B2) into the grooves of the face frame (A) and align the cam lock connectors. **(Figure 2)** Lock the cam locks with a screwdriver by turning the screw 180° clockwise. **(Figure 3)**

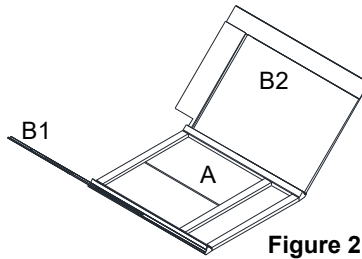


Figure 2

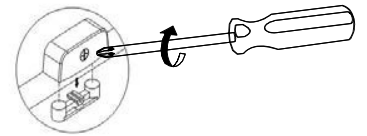


Figure 3

3. Installing the Bottom Panel: Gently spread the side panels and insert the bottom panel (C) into the grooves of side panels (B1,B2) until it is fully seated into the groove of the face frame (A).

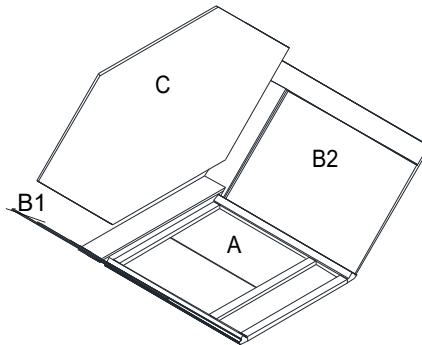


Figure 4

4. Installing the Rear Side Panels (Figure 5): Insert rear left side panel (E1) and right side panel (E2) into the grooves of the side panels (B1,B2) aligning side panels & bottom panel with rear side panels. Lock each cam lock connector with a screwdriver by turning the screw. **(Figure 3)**

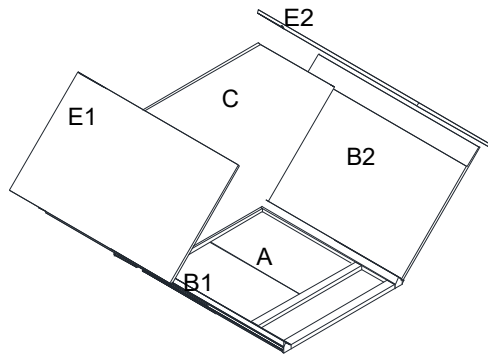


Figure 5

5. Installing the Back Panel and Toe Kick : Place the back panel (D) onto both Left and Right Rear Side Panels. (E1,E2) (Figure 6) Lock each cam lock connectors with a screwdriver by turning the screw. (Figure 3)

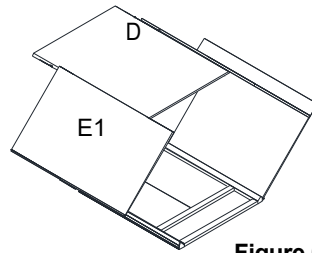


Figure 6

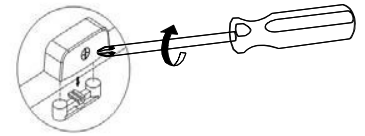


Figure 3

6. Installing the Toe Kick (F): Place the toe kick (F) at the bottom of the cabinet and attach it to side panels (B1,B2) using metal corner braces (e) and screws (d).

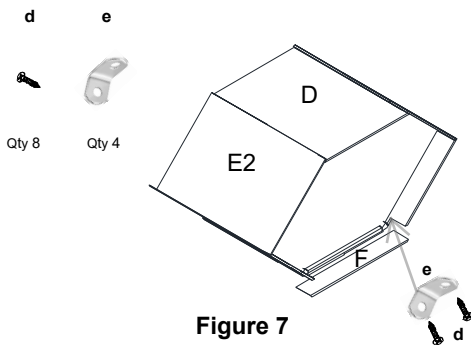


Figure 7

7. Installing the Corner Braces (Figure 8) and inserting the Drawer: Place the corner braces (b) on each top corner of the cabinet and secure them with the 1/2" Corner Brace Screws (c). Install the rubber bumpers (a) onto the corners of the doors where they contact the frame.

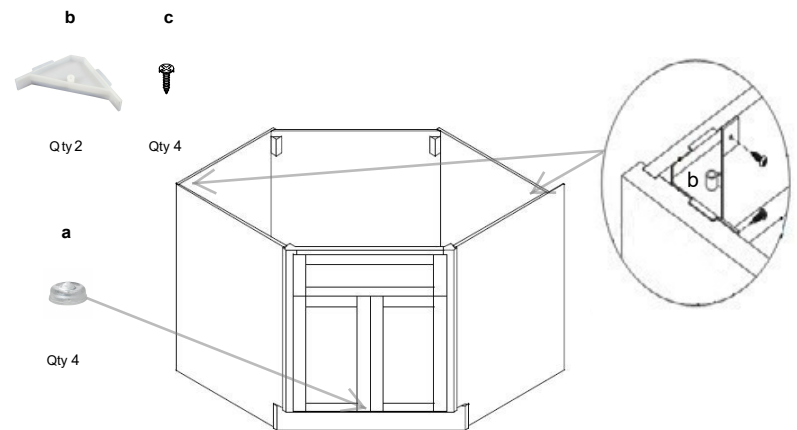


Figure 8

► Maintenance

For daily cleaning, use a dry cloth and a soft liquid cleaner.

Never use abrasive cleaners containing acetone, chlorine or strong bleach. Also, do not use tools as scrapers, metallic brushes, and other products which can scratch or tarnish surfaces. Under no circumstances should you use chrome cleaner on chrome-plated or brass trim, hinges, handles, sockets etc.

Good ventilation is essential for maintaining the quality and look of this furniture.

Warranty and Customer Care Information

For the most up to date warranty information for your product, please visit our website - www.cabinetstogo.com to get the specific details. If you have any questions with warranties or to make a claim, please contact Customer Care by email - customer care@cabinetstogo.com or call 1-800-CABINET.